



# LASSA FEVER SITUATIONAL REPORT

## National Public Health Institute of Liberia (NPHIL)



<b>REPORTING PERIOD:</b>	<b>October 10-16, 2025</b>
<b>NUMBER:</b>	<b>175</b>
<b>DATE:</b>	<b>October 16, 2025</b>

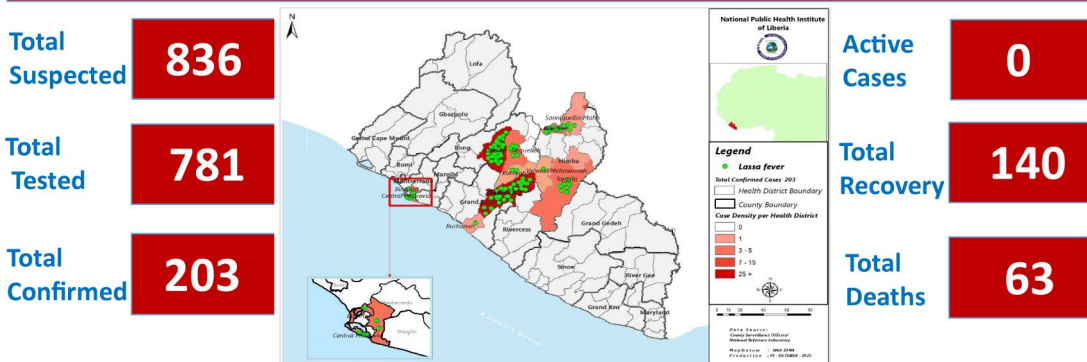
**Table 1: Key Indicators**

Reporting year	Suspected Cases	Confirmed Cases	Death (confirmed cases)	Case Fatality Rate % (CFR)	Counties Affected (confirmed cases)	Districts Affected (confirmed cases)
Current	0	0	0	0	0	0
2025 (cumulative)	155	24	7	29.2	5	6
2022 -2024 Cumulative	681	179	56	31	5	11

### HIGHLIGHTS

- **No new confirmed death reported**
- No new suspected case reported
- Three (3) contacts line listed and undergoing follow up
- Total 203 confirmed cases reported including 63 deaths (CFR: 31%)

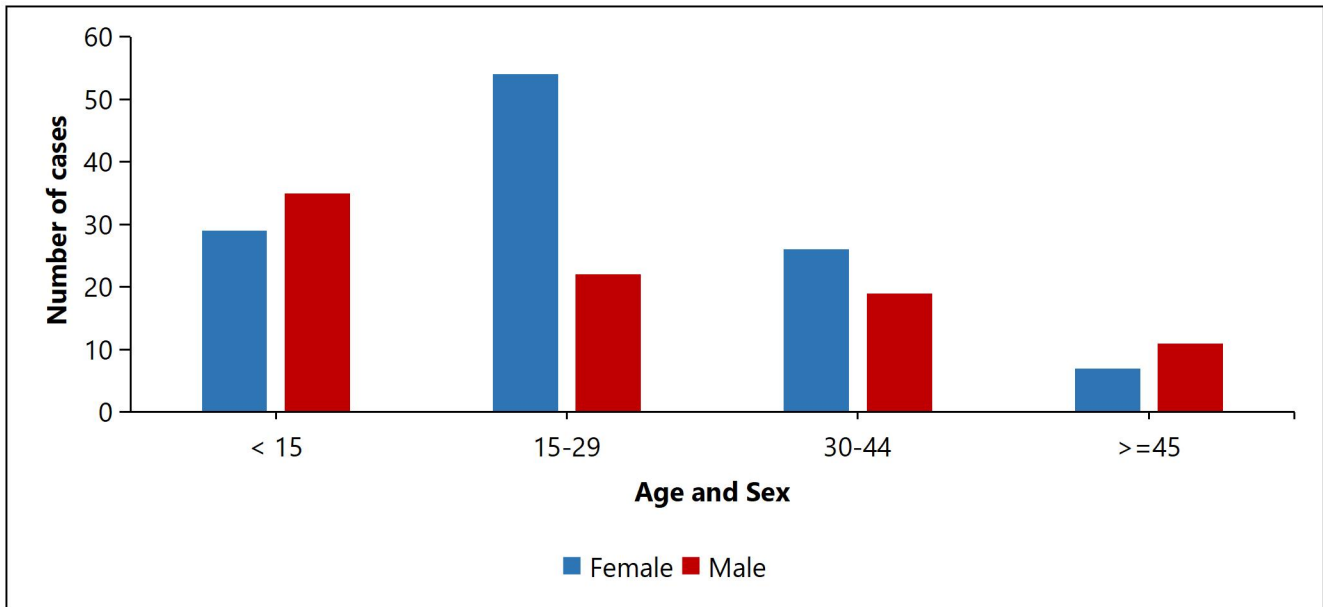
### Liberia Lassa fever Case Update: Jan 1, 2022 – October 16, 2025



Total confirmed: **203** (Bong **82**, Bassa **69**, Nimba **43**, Montserrado **8**, River Gee **1**)

Call 4455 to report suspected cases

**Figure 1: Summary of geospatial distribution of Lassa fever cases reported in Liberia, January 1, 2022-October 16, 2025**

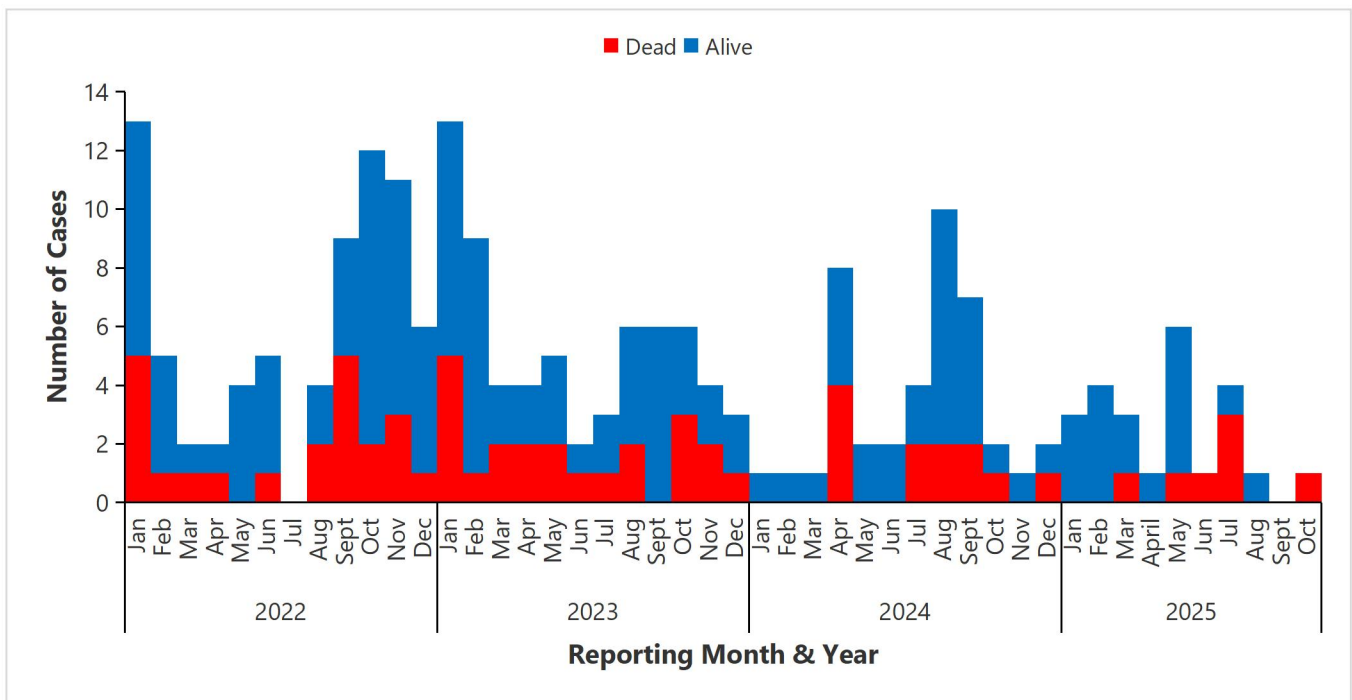


**Figure 2: Age and sex distribution of Confirmed Lassa fever cases in Liberia, January 1, 2022 – October 16, 2025**

**Table 2: Confirmed Cases Reported by County and Health District, Liberia, January 1, 2022 – October 16, 2025**

County	Reporting District	Active Cases	Recovery	Deaths	Cumulative
Bong	Suakoko	0	54	18	72
	Jorquelleh	0	7	2	9
	Kokoya	0	1	0	1
Grand Bassa	<b>District 3 A&amp;B</b>	<b>0</b>	<b>55</b>	<b>13</b>	<b>68</b>
	Buchana	0	0	1	1
Montserrado	Bushrod	0	2	0	2
	Central Monrovia	0	2	4	6
Nimba	Bain-Garr	0	7	9	16
	Saclepea-Mah	0	3	0	3
	Sanniequellie-Mah	0	6	9	15
	Tappita	0	3	6	9
River Gee	Potupo	0	0	1	1
<b>Total Confirmed Cases &amp; Deaths</b>		<b>0</b>	<b>140</b>	<b>63</b>	<b>203</b>

**Legend: Red** = Counties/Districts with Active Cases/Contacts; **Yellow** = Counties/Districts in Countdown



**Figure 2: Epi-curve of confirmed Lassa fever cases by reporting month in Liberia, Jan 1, 2022-Oct 16, 2025**

**Table 3: Summary of Lassa fever cases and contact in Liberia, Jan 1, 2022 – Oct 16, 2025**

<b>Variables</b>	<b>Cumulative</b>
Total suspected cases reported to the national level	<b>836</b>
Total samples collected	<b>826</b>
Total samples tested	<b>781</b>
Total Laboratory confirmed	<b>203</b>
Total confirmed cases alive/recovered	<b>140</b>
Total deaths among confirmed cases	<b>63</b>
Case fatality rate (CFR)	<b>31%</b>
Total confirmed cases in isolation/active	<b>0</b>
Total contacts line listed	<b>1,782</b>
Total contacts undergoing 21 days follow up	<b>3</b>

## **PUBLIC HEALTH ACTIONS**

### **I. Coordination**

- The response has been led by the County Health Team (s) with technical support from the National Public Health Institute of Liberia (NPHIL), the Ministry of Health (MOH) and partners
  - The Incident Management System (IMS) have been activated in the affected county
  - The PHEOC in the response county is in response mode coordinating the response

### **II. Surveillance**

- Continuous follow up with the county in response mode for updates on status of the Lassa fever outbreak
- Active case search is being conducted in the affected community
- Three (3) contacts line listed and undergoing follow up
- One county (Grand Bassa) is currently in outbreak
- Developed and disseminated weekly sitreps to stakeholders

### **III. Case management**

- There is no confirmed case currently in isolation

### **IV. Laboratory**

- The National Public Health Reference Laboratory (NPHRL) continues the testing of Lassa fever samples.
- Total of 203 cases have been confirmed by the NPHRL since this outbreak

### **V. Risk Communication and Community Engagement**

- Community engagement and health education conducted in affected district/communities

### **VI. Dead Body Management**

- A total of 63 confirmed deaths recorded and were buried under safe and dignified conditions

### **Key Challenges**

- There is limited ribavirin supply in country

- Limited logistics (gasoline, communication cards, fuel, etc) to support active case search in the affected county

**For comments or questions, please contact**

**Emmanuel Dwalu, BSc, BSEd, PDGE, FETP, MPH  
Epidemiologist/Lassa fever Focal Person**

Division of Infectious Disease and Epidemiology, NPHIL

Cell: +231.77.088.3760 / +231.88.688.3760

Email: [dwaluemmanuel@gmail.com](mailto:dwaluemmanuel@gmail.com)

**Ralph W. Jetoh, M.D., MPH  
Director**

Division of Infectious Disease and Epidemiology, NPHIL

Cell: +231.77.737.2655

Email: [ralphica2000@gmail.com](mailto:ralphica2000@gmail.com)

Issuing Authority:

**Dougbeh Chris Nyan, M.D.  
Director General**

National Public Health Institute of Liberia

Cell: +231.77.794.9027

Email: [Dougbeh-Chris.Nyan@nphil.gov.lr](mailto:Dougbeh-Chris.Nyan@nphil.gov.lr) / [dnyan@doctor.com](mailto:dnyan@doctor.com)