



LASSA FEVER SITUATIONAL REPORT

National Public Health Institute of Liberia (NPHIL)



REPORTING PERIOD:	October 3-9, 2025
NUMBER:	174
DATE:	October 9, 2025

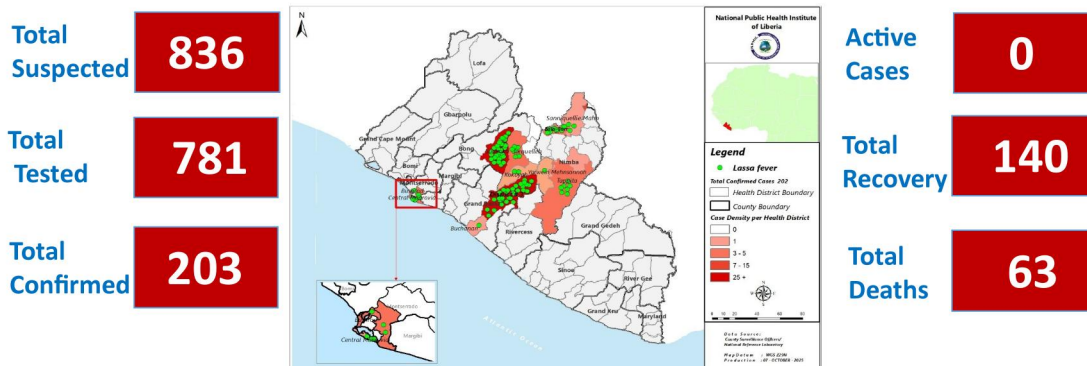
Table 1: Key Indicators

Reporting year	Suspected Cases	Confirmed Cases	Death (confirmed cases)	Case Fatality Rate % (CFR)	Counties Affected (confirmed cases)	Districts Affected (confirmed cases)
Current	5	1	1	100	1	1
2025 (cumulative)	155	24	7	29.2	5	6
2022 -2024 Cumulative	681	179	56	31	5	11

HIGHLIGHTS

- **One (1) new confirmed death reported from Grand Bassa County**
- Five (5) new suspected cases reported from Montserrado (2), Grand Bassa (2), and Bong (1) Counties
- Three (3) contacts line listed and undergoing follow up
- Total 203 confirmed cases reported including 63 deaths (CFR: 31%)

Liberia Lassa fever Case Update: Jan 1, 2022 – October 9, 2025



Call 4455 to report suspected cases

Figure 1: Summary of geospatial distribution of Lassa fever cases reported in Liberia, January 1, 2022-October 9, 2025

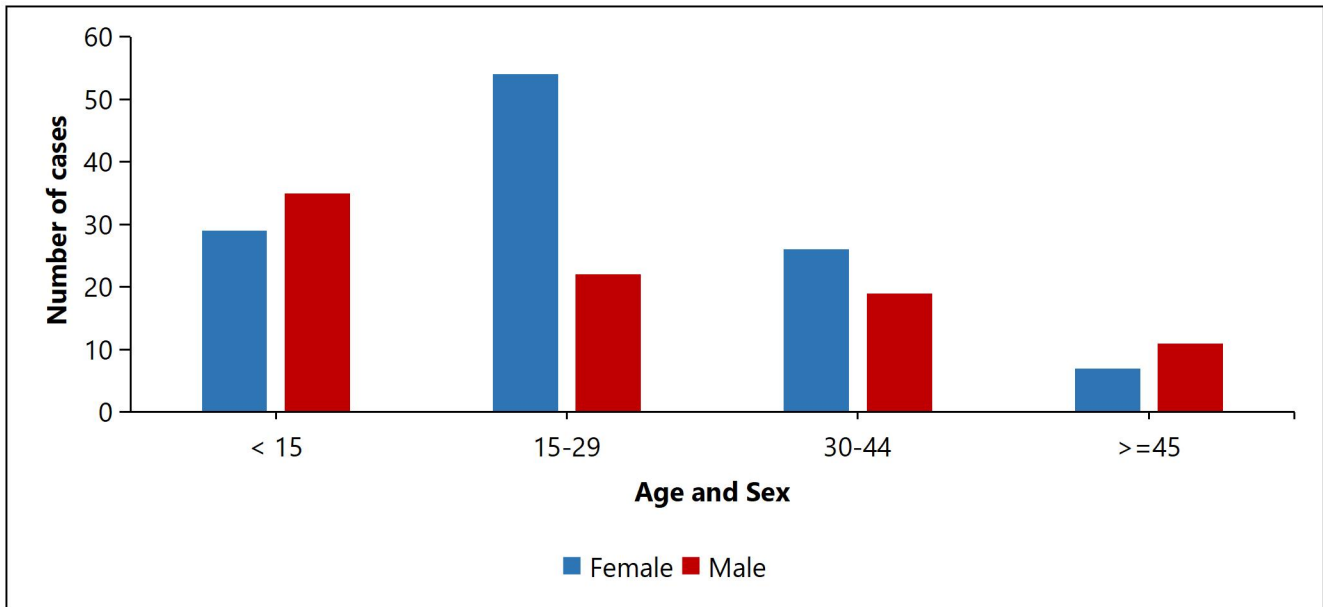


Figure 2: Age and sex distribution of Confirmed Lassa fever cases in Liberia, January 1, 2022 – October 9, 2025

Table 2: Confirmed Cases Reported by County and Health District, Liberia, January 1, 2022 – October 9, 2025

County	Reporting District	Active Cases	Recovery	Deaths	Cumulative
Bong	Suakoko	0	54	18	72
	Jorquelleh	0	7	2	9
	Kokoya	0	1	0	1
Grand Bassa	District 3 A&B	0	55	13	68
	Buchana	0	0	1	1
Montserrado	Bushrod	0	2	0	2
	Central Monrovia	0	2	4	6
Nimba	Bain-Garr	0	7	9	16
	Saclepea-Mah	0	3	0	3
	Sanniequellie-Mah	0	6	9	15
	Tappita	0	3	6	9
River Gee	Potupo	0	0	1	1
Total Confirmed Cases & Deaths		0	140	63	203

Legend: Red = Counties/Districts with Active Cases/Contacts; **Yellow** = Counties/Districts in Countdown

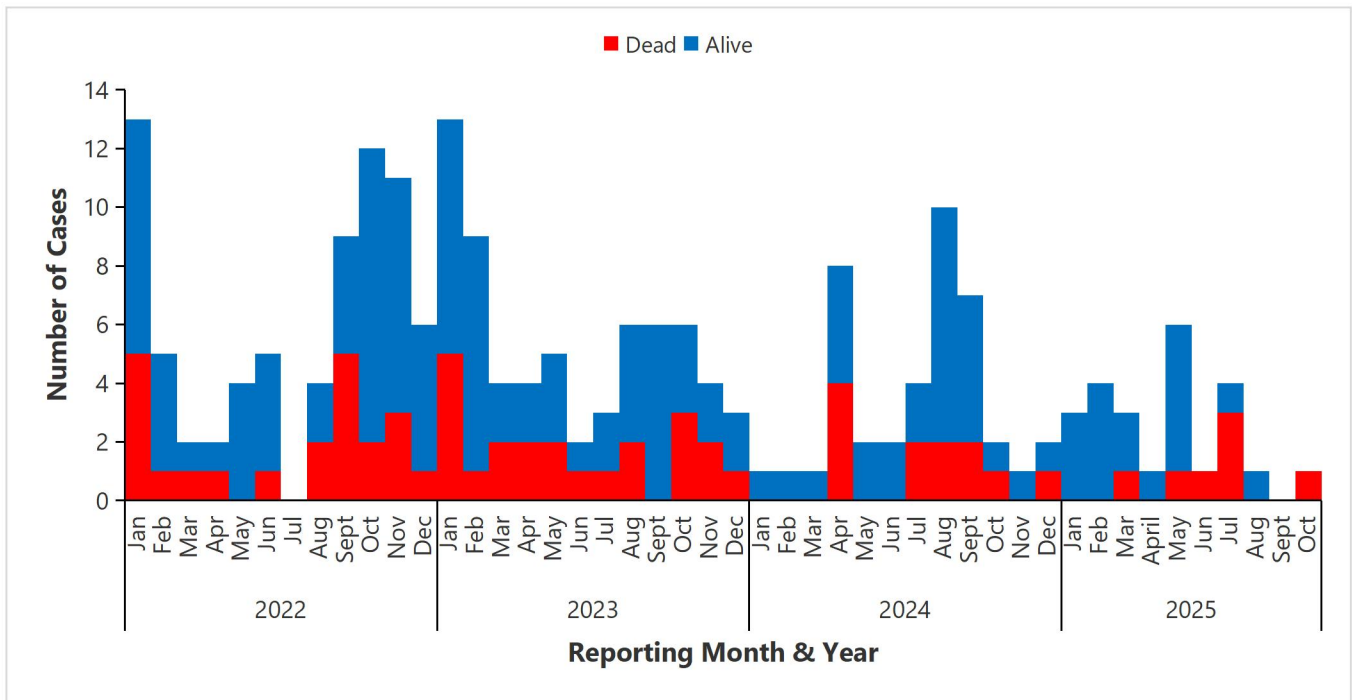


Figure 2: Epi-curve of confirmed Lassa fever cases by reporting month in Liberia, Jan 1, 2022-Oct 9, 2025

Table 3: Summary of Lassa fever cases and contact in Liberia, Jan 1, 2022 – Oct 9, 2025

Variables	Cumulative
Total suspected cases reported to the national level	836
Total samples collected	826
Total samples tested	781
Total Laboratory confirmed	203
Total confirmed cases alive/recovered	140
Total deaths among confirmed cases	63
Case fatality rate (CFR)	31%
Total confirmed cases in isolation/active	0
Total contacts line listed	1,782
Total contacts undergoing 21 days follow up	3

PUBLIC HEALTH ACTIONS

I. Coordination

- The response has been led by the County Health Team (s) with technical support from the National Public Health Institute of Liberia (NPHIL), the Ministry of Health (MOH) and partners
 - The Incident Management System (IMS) have been activated in the affected county
 - The PHEOC in the response county is in response mode coordinating the response

II. Surveillance

- Continuous follow up with the county in response mode for updates on status of the Lassa fever outbreak
- Active case search is being conducted in the affected community
- Three (3) contacts line listed and undergoing follow up
- One county (Grand Bassa) is currently in outbreak
- Developed and disseminated weekly sitreps to stakeholders

III. Case management

- There is no confirmed case currently in isolation

IV. Laboratory

- The National Public Health Reference Laboratory (NPHRL) continues the testing of Lassa fever samples.
- Total of 203 cases have been confirmed by the NPHRL since this outbreak

V. Risk Communication and Community Engagement

- Community engagement and health education conducted in affected district/communities

VI. Dead Body Management

- A total of 63 confirmed deaths recorded and were buried under safe and dignified conditions

Key Challenges

- There is limited ribavirin supply in country

- Limited logistics (gasoline, communication cards, fuel, etc) to support active case search in the affected county

For comments or questions, please contact

Emmanuel Dwalu, BSc, BSEd, PDGE, FETP, MPH
Epidemiologist/Lassa fever Focal Person

Division of Infectious Disease and Epidemiology, NPHIL

Cell: +231.77.088.3760 / +231.88.688.3760

Email: dwaluemmanuel@gmail.com

Ralph W. Jetoh, M.D., MPH

Director

Division of Infectious Disease and Epidemiology, NPHIL

Cell: +231.77.737.2655

Email: ralphica2000@gmail.com

Issuing Authority:

Dougbeh Chris Nyan, M.D.

Director General

National Public Health Institute of Liberia

Cell: +231.77.794.9027

Email: Dougbeh-Chris.Nyan@nphil.gov.lr / dnyan@doctor.com