



Liberia IDSR Epidemiology Bulletin

Epi-week 24 (June 9 – 15, 2025)

Country Population: 5,737,021

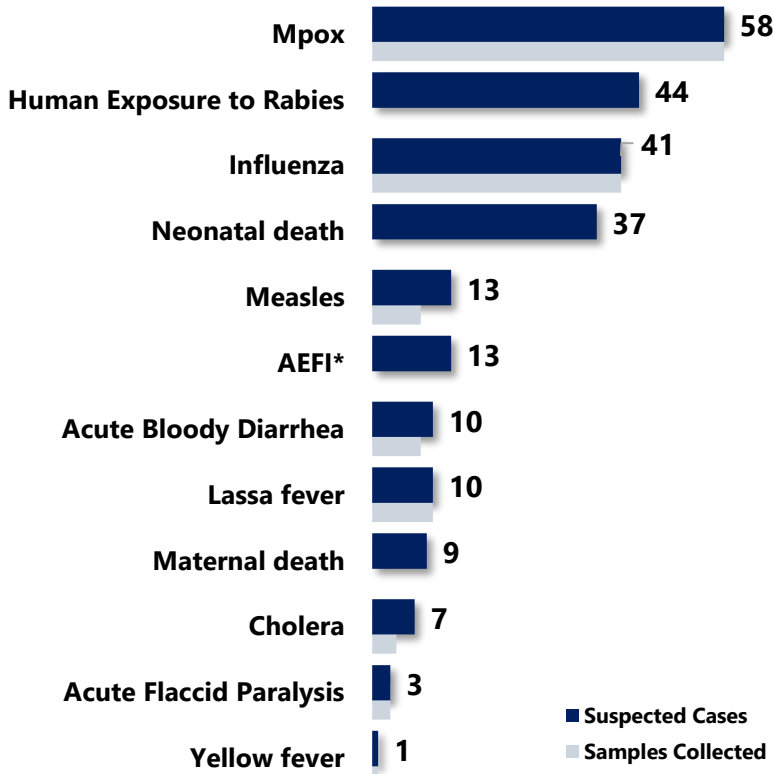
Volume 22 Issue 24

June 9 – 15, 2025

Data Source: CSOs from 15 Counties and Laboratory

Highlights

Figure 1. Public Health Events Reported



Keynotes and Events of Public Health Significance

- ◆ A total of 246 events of public health importance, including 46 deaths, were reported
- ◆ Completeness and Timeliness of health facility reports were 99%, respectively
- ◆ Ongoing Mpox outbreak in 13 counties
- ◆ Ongoing Lassa fever outbreak in two counties
- ◆ Ongoing Measles outbreak in three counties

*Adverse Event Following Immunization

Reporting Coverage

Table 1. Health Facility Weekly IDSR Reporting Coverage, Liberia, Epi-week 24, 2025

County	Expected Reports from Health Facility	Reports Received	Received on Time	Completeness (%)	Timeliness (%)
Bomi	29	29	29	100	100
Bong	64	64	64	100	100
Gbarpolu	18	18	18	100	100
Grand Bassa	38	38	38	100	100
Grand Cape Mount	36	36	36	100	100
Grand Gedeh	24	24	24	100	100
Grand Kru	25	25	25	100	100
Lofa	61	61	61	100	100
Margibi	64	63	63	98	100
Maryland	28	28	28	100	100
Montserrado	371	371	367	100	99
Nimba	102	102	102	100	100
Rivercess	21	21	21	100	100
River Gee	21	21	21	100	100
Sinoe	41	41	41	100	100
Liberia	943	942	938	99	99

942(99%)
Health facilities report IDSR data

98(100%)
Health districts reported IDSR data

938(99%)
Health facilities reported timely IDSR data

Legend: ≥80 <80

◆ The national target for weekly IDSR reporting is 80%. All counties reported on time. Health facility timeliness is monitored at the health district level.

Vaccine-Preventable Diseases

Measles

- ☞ Thirteen (13) suspected cases reported from Montserrado (4), Nimba (3), Grand Gedeh (3), Grand Bassa (2), and Lofa (1) Counties
 - Eight specimens were collected, 3 tested negative, and 5 positive
 - Forty-six percent (6/13) of the suspected cases were vaccinated for measles (*see Table 2*)
- ☞ Cumulatively, 831 suspected cases have been reported since Epi-week 1.
 - Proportion of suspected cases with specimens collected: 63% (524/831)
 - Proportion of negative Measles cases tested for Rubella 86% (88/102) [negative-85, positive-3]
- ☞ Liberia's annualized noni measles febrile rash illness rate is now 3.9 per 100,000

Table 2. Distribution and Vaccination Status of Measles Cases, Liberia, Epi-week 24, 2025

County	Reported cases	Vaccinated	Number of Doses Received		
			One Dose	Two Doses	Doses Not Indicated
Grand Bassa	2	1	1	0	0
Grand Gedeh	3	2	2	0	0
Lofa	1	1	0	1	0
Montserrado	4	1	1	0	0
Nimba	3	1	1	0	0
Total	13	6	5	1	0

Outbreak Section (January 6, 2022 – June 15, 2025)

- ☞ Three (3) new confirmed cases reported from Nimba County
- ☞ A total of 13,780 confirmed cases, including 96 deaths, have been reported
- ☞ Cumulative Case Fatality Rate (CFR): 0.7% (96/13,780)
- ☞ Three counties are currently in outbreak (Nimba, Montserrado, and Grand Cape Mount).

Table 3. Measles Outbreak by County and Case Status, Liberia, December 13, 2021 – June 15, 2025

County	Total Cases	Active	Recovery	Deaths	No. of Districts
Montserrado	5,410	0	5,341	69	2/7
Nimba	1,784	3	1,777	4	5/11
Grand Bassa	943	0	936	7	0/8
Margibi	803	0	802	1	0/4
Bong	595	0	592	3	0/9
Maryland	1,327	0	1,327	0	0/6
Lofa	292	0	292	0	0/6
Grand Kru	1,119	0	1,117	2	0/5
Grand Cape Mount	199	0	196	3	1/5
Bomi	148	0	143	5	0/4
Rivercess	90	0	88	2	0/6
Gbarpolu	64	0	64	0	0/5
Grand Gedeh	604	0	604	0	0/6
River Gee	155	0	155	0	0/6
Sinoe	247	0	247	0	0/10
Total	13,780	3	13,681	96	8/98

PUBLIC HEALTH ACTION

I. Coordination

- The response has been led by the County Health Teams with technical support from the NPHIL, MoH, and partners.

II. Epidemiological Surveillance

- Active case search ongoing in Montserrado, Nimba, and Grand Cape Mount Counties

III. Case management

- Home-based case management ongoing in the affected communities in Montserrado, Nimba, and Grand Cape Mount Counties

IV. Immunization

- Routine immunization ongoing across the Country

V. Laboratory

- Specimens were collected and pending testing from Commonwealth district

VI. Risk Communication & Community Engagement

- Health education on the prevention and spread of the disease ongoing in Somalia Drive and Commonwealth districts.

Challenges

- Delay testing of samples from NPHRL

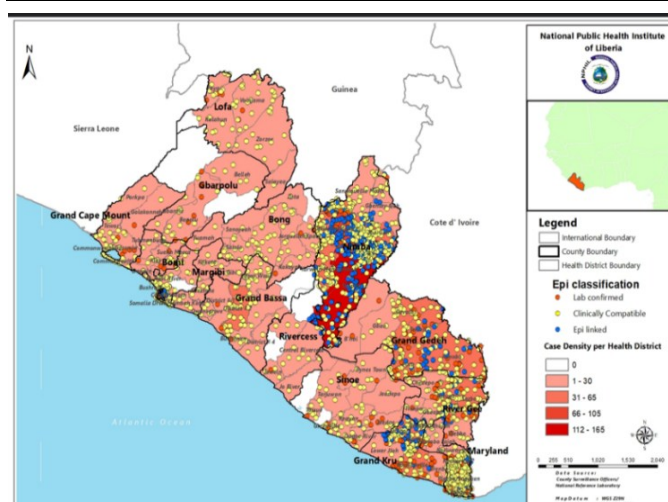


Figure 2. Geographical Distribution of Confirmed Measles Cases by Health District, Liberia, Dec. 13, 2021– June 8, 2025

Neonatal Tetanus

- Zero suspected cases reported
- Cumulatively, 3 cases have been reported since Epi-week 1.

Acute Flaccid Paralysis (AFP)

- Three (3) cases were reported from Grand Gedeh, Lofa, and Nimba Counties
 - Specimens were collected and pending shipment
- Cumulatively, 35 cases have been reported since Epi-week 1.
 - Twenty-six (26) tested negative, 5 NPENT, 4 pending testing
- As of week 24, the annualized non-polio AFP rate is at **2.9/100,000 population** under 15 years of age
- Stool adequacy rate is 97% as of week 24, 2025

Table 4. Non-Polio AFP Rate 2/100,000 < 15 years by Reporting County, Liberia, Epi-week 1 – 24, 2025

County	< 15 years pop	# of AFP Cases Reported	# of Cases with Lab Result	Non-Polio AFP Rate	# of cases <14 days specimen collected	% of stool <14days	# of NPENTs	% of NPENT
Bomi	66515	1	1	3.3	1	100%	0	0%
Bong	225918	3	2	2.9	3	100%	0	0%
Gbarpolu	44507	1	1	4.9	1	100%	0	0%
Grand Bassa	140249	0	0	0.0	0	0%	0	0%
Grand Cape Mount	86679	1	1	2.5	1	100%	0	0%
Grand Gedeh	109687	3	0	5.9	3	100%	0	0%
Grand Kru	56311	1	1	3.8	1	100%	0	0%
Lofa	175438	5	2	6.2	5	100%	0	0%
Margibi	148644	4	3	5.8	3	75%	1	25%
Maryland	81693	1	1	2.7	1	100%	1	100%
Montserrado	969569	8	8	1.8	8	100%	1	13%
Nimba	297830	1	0	0.7	1	100%	0	0%
Rivercess	42988	6	5	30.2	6	100%	2	33%
River Gee	64196	0	1	0.0	0	0%	0	0%
Sinoe	69556	0	0	0.0	0	0%	0	0%
Liberia	2584117	35	26	2.9	34	97%	5	14%
Non-Polio AFP Rate	<2			<80%	Non-Polio	<10%		
	≥2		Stool adequacy	≥80%	Enterovirus	≥10%	Silent	

Yellow Fever

- One (1) suspected case reported from Grand Cape Mount County
 - Specimen was collected and pending testing
- Cumulatively, 29 suspected cases have been reported since Epi-week 1.
 - Proportion of suspected cases with specimens collected 24/29 (83%)
 - Proportion of suspected cases with specimens tested 19/24 (79%)
 - One lab-confirmed (positive) and 18 not a case (negative)

Mpox

- Fifty-eight (58) suspected cases were reported from Montserrado (29), Bong (8), Bomi (6), Nimba (4), Rivercess (2), Gbarpolu (2), Margibi (2), Sinoe (1), Grand Kru (1), Lofa (1), Grand Bassa (1), and Maryland (1) Counties
 - Specimens were collected, and pending testing
- Cumulatively, 556 suspected cases have been reported, 532 specimens collected with 396 tested: 109 positive and 287 negative

Outbreak Section (January 1, 2024 – June 19, 2025)

- No new confirmed cases reported
- Total of 381 contacts undergoing 21-day follow-up
- Total of 175 confirmed cases reported with no deaths recorded
- There are 13 counties with active cases

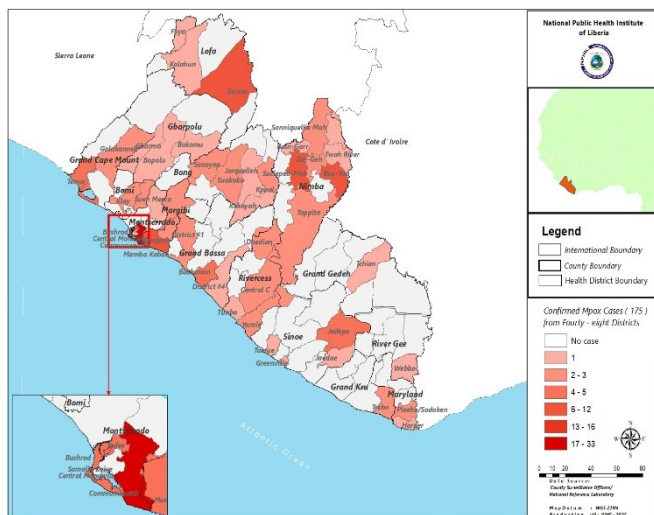


Figure 3. Distribution of Lab-confirmed Mpox cases by Health District, Liberia, January 1, 2024 – June 19, 2025

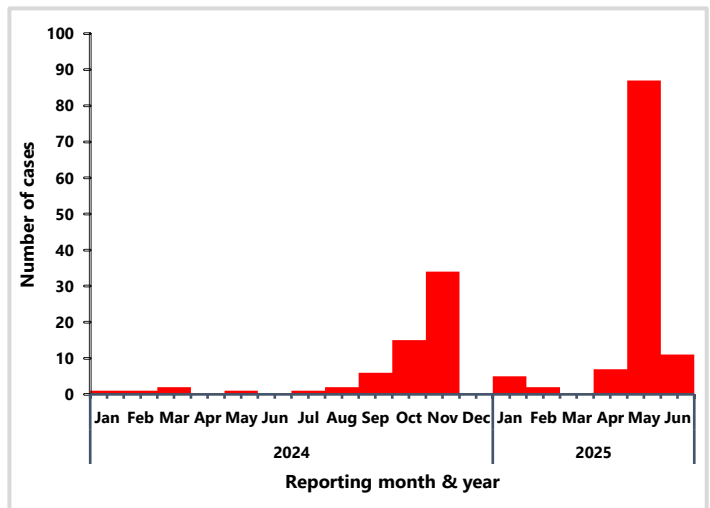


Figure 4. Epi-curve of Confirmed Mpox cases, Liberia, January 1, 2024 – June 19, 2025

PUBLIC HEALTH RESPONSE

I. Coordination

- Conduct regular IMS meetings at national and subnational levels in affected counties to direct response efforts
- Production of regular Sitreps and dissemination

II. Epidemiological Surveillance

- Active media scanning and community case finding continue through EIOS platform
- Continue to follow up with response counties to obtain updates on the status of the Mpox outbreak
- Three hundred eighty-one (381) contacts undergoing follow-up (Montserrado-212, Nimba-85, Gbarpolu-58, Margibi-10, Bong-10, Lofa-6)

III. Case management

- Twenty-five (25) confirmed cases in isolation: (Montserrado-24, Nimba-1)

IV. Laboratory

- Sequencing results showed Monkeypox virus Clade IIa and Clade IIb
- The National Public Health Reference Laboratory continues the testing of Mpox samples

V. Risk Communication & Community Engagement

- Ongoing community engagement and awareness creation via a radio station in partnership between the RCCE team and affected County Health teams

VI. Immunization

- Ongoing vaccination of contacts in affected counties
- Mpox immunization scope to be expanded

NEXT STEPS

- Continue active case search in the affected communities
- Follow up with the counties to line list and monitor contacts
- Counties to prepare and submit situational reports

Dengue

Zero suspected cases reported

Cumulatively, two (2) suspected cases were reported since Epi-week 1.

Influenza-Like Illnesses

Influenza

Forty-one (41) cases were reported from Maryland (25), Montserrado (13), and Nimba (3) Counties

- Specimens were collected, 1 tested positive, 4 negative, and 36 pending testing

Cumulatively, 747 suspected cases reported since Epi-week 1.

- Seven hundred forty-seven (747) specimens were collected: 37 tested positive, 544 negative, 12 indeterminate, 2 rejected, and 149 pending testing

COVID-19

Zero suspected cases reported

Cumulatively, 2 suspected cases reported since Epi-week 1.

Viral Haemorrhagic Fever

Lassa fever

Ten (10) suspected cases reported from Bong (9) and Nimba (1) Counties

- Specimens were collected, 7 tested negative, and 3 pending testing

Cumulatively, 102 suspected cases have been reported

- Proportion of suspected cases with sample collected (101/102) 99%.

- Proportion of suspected cases with specimens tested (87/101) 86%

- Nineteen (19) positive, including three deaths, and 60 negative
- Case Fatality Rate: 16%

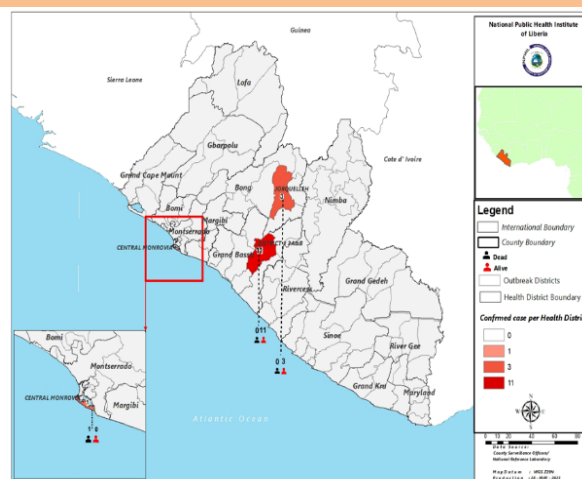


Figure 5. Geospatial distribution of confirmed Lassa fever by Health District, Liberia, Epi-week 1 - 24, 2025

- 🔗 No new confirmed case reported
- 🔗 Twenty-seven (27) contacts, including 18 healthcare workers, line listed and undergoing follow-up
- 🔗 Total of 196 confirmed cases, including 59 deaths reported
- 🔗 Cumulative Case Fatality Rate (CFR): 30% (59/196)
- 🔗 Two counties are currently in outbreak (Bong & Grand Bassa)

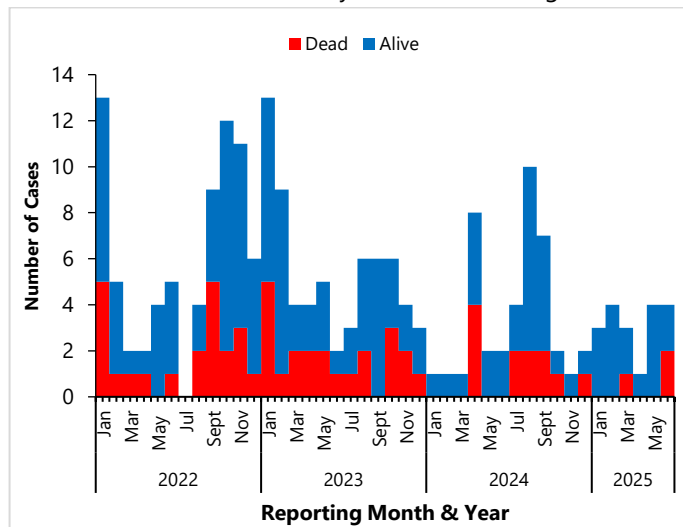


Figure 6. Epi-curve of confirmed Lassa fever cases, Liberia, January 6, 2022 – June 18, 2025

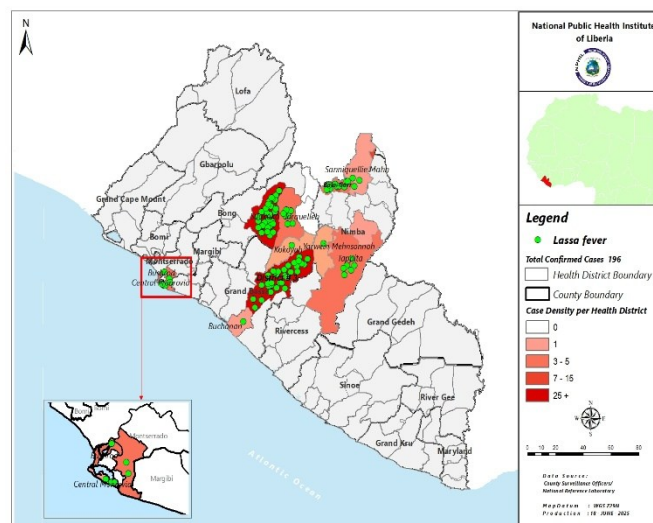


Figure 7. Geospatial distribution of outbreak district with number of confirmed Lassa fever cases, Liberia, January 6, 2022 – June 18, 2025

PUBLIC HEALTH RESPONSE

I. Coordination

- The National Public Health Institute of Liberia (NPHIL) and the Ministry of Health (MoH) are providing technical support to the affected counties with support from partners

II. Epidemiological Surveillance

- Active case search ongoing in affected communities
- Twenty-seven (27) contacts, including 18 healthcare workers, line listed
- Total of 27 contacts undergoing follow-up (Bong County)
- Two counties (Bong & Grand Bassa) are currently in outbreak
- Weekly sit-reps developed and disseminated to stakeholders

III. Risk Communication and Community Engagement

- Risk communication and community engagement are being conducted in the affected communities

IV. Case management

- Ribavirin distributed to affected counties
- There is no active case currently in isolation

V. Dead Body Management

- A total of 59 deaths recorded among confirmed cases
- Safe and dignified burials conducted for the deceased cases

VI. Laboratory

- The National Public Health Reference Laboratory continues testing of Lassa fever samples
- A total of 196 Lassa fever cases have been confirmed since this outbreak

Challenges

- There is currently limited ribavirin supply in country
- Limited logistics (gasoline, communication cards, fuel, etc) to support active case finding
- Lack of support for contact training and active case search/investigation in affected counties

Table 6: Summary of Lassa fever Outbreak, Liberia, January 6, 2022 – June 18, 2025

County	Outbreak Districts	Outbreak Start Date	Total suspected	Total confirmed	HCWs confirmed	Total Deaths	Deaths in HCWs	CFR %	Total Contacts	# HCW contacts	Contacts became cases	Contacts under follow up	Contacts completed	Days in countdown	Outbreak Status
Montserrado	Bushrod	13-Feb-23	17	1	0	0	0	0%	29	21	0	0	29	Completed	Ended
	Central Monrovia	27-Nov-23	1	2	0	1	0	50%	49	0	0	0	49	Completed	Ended
	Central Monrovia	3-Mar-23	38	2	0	1	0	50%	28	27	0	0	28	Completed	Ended
	Bushrod	30-Apr-24	2	1	0	0	0	0%	14	6	0	0	14	Completed	Ended
	Central Monrovia	28-Mar-25	1	1	0	1	0	100%	50	13	0	0	50	Completed	Ended
Bong	Suakoko	21-Apr-23	192	54	18	13	2	24%	496	114	6	0	417	Completed	Ended
	Jorquelleh	15-Oct-23	14	6	3	1	1	17%	121	86	3	0	169	Completed	Ended
	Kokoyah	6-Jun-24	3	1	0	0	0	0%	8	0	0	0	8	Completed	Ended
	Suakoko	29-Jul-24	11	5	1	0	0	0%	37	14	0	0	37	Completed	Ended
	Suakoko	23-Feb-24	31	3	0	0	0	0%	29	14	0	0	29	Completed	Ended
	Salala	8-Mar-24	2	2	0	1	0	50%	21	0	0	0	21	Completed	Ended
	Jorquelleh	11-Apr-24	3	2	0	1	0	0%	41	30	0	0	41	Completed	Ended
	Suakoko	19-Nov-24	3	2	0	1	0	50%	8	5	0	0	8	Completed	Ended
	Suakoko	16-May-25	6	4	0	2	0	50%	19	29	0	27	19	Active	Ongoing
	Jorquelleh	6-May-25	2	1	0	0	0	0%	32	23	0	0	32	14	Countdown
Grand Bassa	District 3A&B	21-Aug-23	87	44	0	10	0	23%	177	40	40	0	159	Completed	Ended
	Buchanan	11-Aug-23	2	1	0	1	0	100%	4	2	0	0	4	Completed	Ended
	District 3A&B	30-Apr-24	7	3	0	1	0	33%	12	3	0	0	12	Completed	Ended
	District 3A&B	3-Sep-24	7	6	0	1	0	17%	27	10	0	0	27	Completed	Ended
	District 3A&B	20-Dec-24	13	12	0	0	0	0%	11	2	0	0	11	14	Countdown
Nimba	Saclepea-Mah	21-Nov-23	4	2	0	1	0	50%	5	0	0	0	5	Completed	Ended
	Sanniquellie-Mah	6-Feb-23	43	15	0	9	0	60%	43	35	8	0	43	Completed	Ended
	Tappita	29-Jul-24	5	2	0	1	0	50%	27	24	0	0	27	Completed	Ended
	Tappita	20-Nov-23	12	5	0	3	0	60%	88	39	4	0	77	Completed	Ended
	Bain-Garr	1-Jun-23	25	6	0	3	0	50%	61	25	0	0	31	Completed	Ended
	Bain-Garr	15-Apr-24	5	2	0	1	0	50%	25	7	0	0	25	Completed	Ended
River Gee	Bain-Garr	18-Jul-24	20	10	0	5	0	50%	173	98	1	0	173	Completed	Ended
	Putupo	25-Nov-22	2	1	0	1	0	100%	14	0	0	0	14	Completed	Ended
Total			558	196	22	59	3	30%	1649	667	62	27	1559		

Legend: Outbreaks in countdown stage in reporting districts

Active/ ongoing outbreaks not in countdown stage with active response interventions in reporting districts

Diarrheal Diseases

Acute Bloody Diarrhoea (Shigellosis)

- ☞ Ten (10) suspected cases were reported from Sinoe (3), Grand Gedeh (2), Lofa (2), Nimba (2), and River Gee (1) Counties
 - Eight (8) specimens were collected, and pending testing
- ☞ Cumulatively, 294 suspected cases have been reported since Epi week 1.
 - One hundred ninety-four (194) specimens were collected, 130 tested: 114 negative, and 16 positive (*Shigella flexneri*)

Severe Acute Watery Diarrhoea (Cholera)

- ☞ Seven (7) suspected cases were reported from Lofa (3), Sinoe (2), and Grand Cape Mount (2) Counties
 - Four (4) specimens were collected, and pending testing
- ☞ Cumulatively, 248 suspected cases have been reported since Epi week 1.
 - One hundred thirty-two (132) specimens were collected, and 76 tested negative

Events of Public Health Importance

Maternal Mortality

- ☞ Nine (9) deaths were reported from Montserrado (5), Sinoe (1), Nimba (1), Gbarpolu (1), and Grand Bassa (1) Counties
- ☞ Primary causes of death were eclampsia (4), anemia (2), sepsis (1), and pending investigation (1)
- ☞ Cumulatively, 119 deaths have been reported, of which 100/119 (84%) were reported from health facilities.
 - Proportion of deaths reviewed 83/119 (70%)

Neonatal Mortality

- ☞ Thirty-seven (37) deaths were reported from Montserrado (17), Sinoe (2), Lofa (1), and Grand Gedeh (1) Counties, including 16 perinatal deaths from Maryland (6), Margibi (3), Grand Kru (2), Gbarpolu (2), Lofa (2), and Bong (1) Counties
- ☞ Primary causes of death were asphyxia (20), preterm (6), sepsis (3), and pending investigation (8)
- ☞ Cumulatively, 536 deaths have been reported since Epi-week 1
 - Proportion of deaths reviewed 351/536 (65%)

Adverse Events Following Immunization (AEFI)/Adverse Drug Reaction (ADR)

- Thirteen (13) events were reported from Sinoe (6), Montserrado (2), Gbarpolu (2), Grand Kru (1), Bomi (1), and Grand Gedeh (1) Counties
- All reported events were categorized as *non-serious*
- Related vaccines included Penta (9), Measles (3), and TCV (1)
- Cumulatively, 348 events have been reported since Epi-week 1.

Other Reportable Diseases

Animal bite (Human Exposure to Rabies)

- Forty-four (44) dog bite cases were reported from Nimba (10), Grand Kru (7), Maryland (5), Grand Bassa (4), Montserrado (4), Lofa (4), Grand Gedeh (3), Rivercess (3), Margibi (2), Bomi (1), and Bong (1) Counties
 - Proportion of cases investigated is 64% (28/44)
 - PEP administered to 5 persons in Nimba, 3 persons in Maryland, 2 in Lofa, 1 person each in Bong, Rivercess, and Montserrado Counties
- Cumulatively, 1,460 cases have been reported since Epi-week 1, including 6 attributable deaths

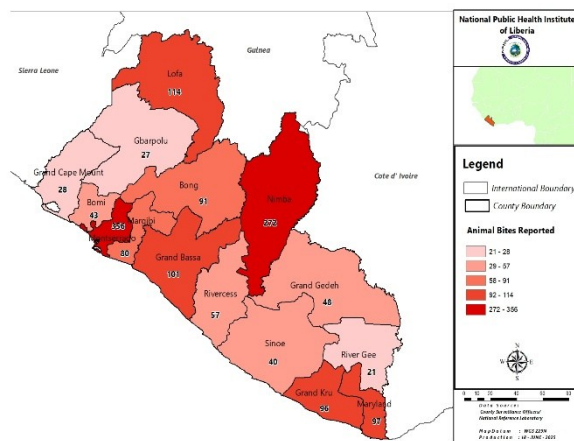


Figure 8. Geographical distribution of Human Exposure to Animal Bites Cases by County, Liberia, Epi-week 1 - 24, 2025

Meningitis

- Zero suspected cases reported
- Cumulatively, 11 suspected cases have been reported since Epi-week 1.
 - Proportion of specimen collected 8/11 (73%)
 - Proportion of specimens tested 7/8 (88%)

Buruli Ulcer

- Zero suspected cases reported
- Cumulatively, three (3) cases have been reported since Epi-week 1.

Border Surveillance Update

- A total of 5518 travelers were screened from the eight (8) designated out of forty-five (45) official points of entry, with incoming travelers accounting for 50% (2766/5518) (Table 6).

Table 6. Cross-border activity at the POE for incoming and outgoing travelers, Liberia, Epi-week 24, 2025

Type of Ports	Point of Entry	Weekly Total	Arrival	Departure	Total travelers with YB	Yellow Book Damage	Card Replaced	Travelers Vaccinated YF & Issued book	Alerts detected/ Verified
Airport	James S. Paynes	38	22	16	0	0	0	0	0
	Robert Int'l Airport	3983	1985	1998	3954	0	28	0	0
Seaport	Freeport of Monrovia	114	57	57	114	0	0	0	0
	Buchanan Port	56	28	28	56	0	0	0	0
Ground Crossing	Bo Water Side	580	356	224	576	0	4	0	0
	Ganta	111	54	57	69	0	8	0	0
	Yekepa	223	86	137	59	4	4	0	0
	Loguatu	413	178	235	403	0	0	0	0
Total		5,518	2766	2752	5231	4	44	0	0

Note: Yellow book (YB) issue for both arrival and departure; Vaccination coverage for both arrival and departure

Public Health Measures

National level

- ☞ Massive awareness and vaccination is ongoing for contacts and high-risk individuals in affected Mpox counties
- ☞ Produced and disseminated situation reports (Lassa fever and Mpox, etc.)
- ☞ Ongoing reclassification of suspected cases (Lassa fever, Mpox, AFP, and Measles)
- ☞ Production and Dissemination of Weekly Epidemiological Bulletin

County-level

☞ Surveillance

- Ongoing active case search and investigation for Mpox in affected counties
- Production of situational reports
- Active case search in affected and surrounding communities and follow-up of contacts ongoing
- Awareness and sensitization of Mpox surveillance is ongoing across the 15 counties
- Maternal and newborn death review is ongoing in counties

☞ Case Management

- Administration of PEP
- Isolation, management, treatment, and active case search for Lassa fever and Measles cases are ongoing in affected counties

Appendix

Summary of Immediately Reportable Diseases, Conditions, and Events by County

COUNTIES		BOMI	BONG	GBARPOLU	GRAND BASSA	GRAND CAPE MOUNT	GRAND GEDEH	GRAND KRU	LOFA	MARGIBI	MARYLAND	MONTERRADO	NIMBA	RIVERCESS	RIVER GEE	SINOE	Total Weekly	Cumulative Reported	Cumulative Lab-confirmed	
No. of Expected Health District		4	9	5	8	5	6	5	6	4	6	7	11	6	6	10	98			
No. of Health District Reported		4	9	5	8	5	6	5	6	4	6	7	11	6	6	10	98			
Vaccine Preventable Diseases	Acute Flaccid Paralysis (Suspected Polio)	A	0	0	0	0	1	0	1	0	0	0	1	0	0	0	3	35	0	
		D	0	0	0	0	0	0	0	0	0	0	0	0	0	0	0	0	0	0
	Measles	A	0	0	0	2	0	3	0	1	0	0	4	3	0	0	0	13	831	86
		D	0	0	0	0	0	0	0	0	0	0	0	0	0	0	0	0	0	0
	Neonatal Tetanus	A	0	0	0	0	0	0	0	0	0	0	0	0	0	0	0	0	3	0
		D	0	0	0	0	0	0	0	0	0	0	0	0	0	0	0	0	0	0
	Mpox	A	6	8	2	1	0	0	1	1	2	1	29	4	2	0	1	58	556	109
		D	0	0	0	0	0	0	0	0	0	0	0	0	0	0	0	0	0	0
Yellow fever	A	0	0	0	0	1	0	0	0	0	0	0	0	0	0	0	1	29	1	
	D	0	0	0	0	0	0	0	0	0	0	0	0	0	0	0	0	0	0	
Viral Hemorrhagic Fever	Dengue fever	A	0	0	0	0	0	0	0	0	0	0	0	0	0	0	0	0	2	0
		D	0	0	0	0	0	0	0	0	0	0	0	0	0	0	0	0	0	0
	Ebola Virus Disease / Marburg Virus Disease	A	0	0	0	0	0	0	0	0	0	0	0	0	0	0	0	0	0	0
		D	0	0	0	0	0	0	0	0	0	0	0	0	0	0	0	0	0	0
	Lassa fever	A	0	9	0	0	0	0	0	0	0	0	0	1	0	0	0	10	101	16
		D	0	0	0	0	0	0	0	0	0	0	0	0	0	0	0	0	1	3
Influenza-Like Illnesses	COVID-19	A	0	0	0	0	0	0	0	0	0	0	0	0	0	0	0	0	2	0
		D	0	0	0	0	0	0	0	0	0	0	0	0	0	0	0	0	0	0
	Influenza	A	0	0	0	0	0	0	0	0	25	13	3	0	0	0	0	41	747	37
		D	0	0	0	0	0	0	0	0	0	0	0	0	0	0	0	0	0	0
Diarrheal Diseases	Acute Bloody Diarrhoea (Shigellosis)	A	0	0	0	0	2	0	2	0	0	0	2	0	1	3	10	294	16	
		D	0	0	0	0	0	0	0	0	0	0	0	0	0	0	0	0	0	
	Severe Acute Watery Diarrhoea (Cholera)	A	0	0	0	0	2	0	0	3	0	0	0	0	0	0	0	7	248	0
		D	0	0	0	0	0	0	0	0	0	0	0	0	0	0	0	0	0	
Events of Public Health Importance	Maternal Mortality	D	0	0	1	1	0	0	0	0	0	5	1	0	0	1	9	119		
	Neonatal Mortality	D	0	1	2	0	0	1	2	3	3	6	17	0	0	2	37	536		
	Adverse Events Following Immunization (AEFI)	A	1	0	2	0	0	1	1	0	0	0	2	0	0	0	6	13	348	0
		D	0	0	0	0	0	0	0	0	0	0	0	0	0	0	0	0	0	
	Unexplained Cluster of Health Events/Disease	A	0	0	0	0	0	0	0	0	0	0	0	0	0	0	0	0	0	
		D	0	0	0	0	0	0	0	0	0	0	0	0	0	0	0	0	0	
Other Reportable Diseases	Tuberculosis	A	0	0	0	0	0	0	0	0	0	0	0	0	0	0	0	0	0	
		D	0	0	0	0	0	0	0	0	0	0	0	0	0	0	0	0	0	
	Human Exposure to Rabies (Suspected Human Rabies)	A	1	1	0	4	0	3	7	4	2	5	4	10	3	0	44	1460	0	
		D	0	0	0	0	0	0	0	0	0	0	0	0	0	0	0	0	0	
	Meningitis	A	0	0	0	0	0	0	0	0	0	0	0	0	0	0	0	0	11	0
		D	0	0	0	0	0	0	0	0	0	0	0	0	0	0	0	0	0	
	Unexplained Cluster of deaths	A	0	0	0	0	0	0	0	0	0	0	0	0	0	0	0	0	0	
		D	0	0	0	0	0	0	0	0	0	0	0	0	0	0	0	0	0	
Neglected Tropical Diseases	Buruli Ulcer	A	0	0	0	0	0	0	0	0	0	0	0	0	0	0	0	0	0	
		D	0	0	0	0	0	0	0	0	0	0	0	0	0	0	0	0	0	
	Yaws	A	0	0	0	0	0	0	0	0	0	0	0	0	0	0	0	0	0	
		D	0	0	0	0	0	0	0	0	0	0	0	0	0	0	0	0	0	
TOTAL		8	19	7	8	3	11	11	15	7	37	74	25	5	1	15	246	5323	268	

D = Dead A = Alive

Notes

- ☞ **Completeness** refers to the proportion of expected weekly IDSR reports received (target: $\geq 80\%$)
- ☞ **Timeliness** refers to the proportion of expected weekly IDSR reports received by the next level on time (target: $\geq 80\%$). The time requirement for weekly IDSR reports:
 - Health facility - required on or before 5:00 pm every Saturday to the district level
 - Health district - required on or before 5:00 pm every Sunday to the county level
 - County - required on or before 12:00 noon every Monday to the national level
- ☞ **Non-polio AFP rate** is the proportion of non-polio AFP cases per 100,000 among the estimated population under 15 years of age in 2025 (annual target: $\geq 2/100,000$)
- ☞ **Non-measles febrile rash illness rate** refers to the proportion of negative measles cases per 100,000 population
- ☞ **Annualized maternal mortality rate** refers to the maternal mortality rate of a given period of less than one year, and it is the number of maternal deaths per 100,000 live births
- ☞ **Annualized neonatal mortality rate** refers to the neonatal mortality ratio of a given period of less than one year, and it is the number of neonatal deaths per 1,000 live births
- ☞ **Epi-linked** refers to any suspected case that has not had a specimen taken for serologic confirmation but is linked to a laboratory-confirmed case
- ☞ **Confirmed case** refers to a case whose specimen has tested positive or reactive upon laboratory testing or has been classified as confirmed by either epidemiologic linkage with a confirmed case or clinical compatibility with the disease or condition

Epidemiological bulletin published with support from WHO and CDC

For comments or questions, please contact

Ralph W. Jetoh, MD, MPH

Director

Infectious Disease and Epidemiology Division

National Public Health Institute of Liberia

Republic of Liberia

Email: ralphica2000@gmail.com

Phone: +231.77.737.2655/ +231.88.652.6388

Website: www.nphil.gov.lr

National Public Health Institute of Liberia (NPHIL)

MISSION

To prevent and control public health threats by promoting healthy outcomes and serving as a source of knowledge

VISION

A centre of excellence to create health outcomes for Liberians through a strong preventive health system and expertise

EDITORIAL TEAM

DIDE / NPHIL

A. N. Mianah
J. S. Kokro
M.G. Jeuronlon
E. Dwalu
A.B. Corvah
S. K. Zayzay
T. L. Hall
S. L. Flomo
M. S. Quiah
P. J. Thomas
H. M. Sherman
M.D. Vaye
N. K. Dovillie
A. Coker
S. Nuwolo
M. Gbeyeah
E. Junius
H. Howard-Bridges
B.A. Adeyemi
J.E.A. Saad

Ministry of Health
WHO Liberia Office
US CDC Liberia Office
Africa CDC-Liberia Office

Data sources

Data and information is provided by the fifteen County Surveillance Officers and National Public Health Reference Laboratory via regular weekly reports, telephone calls and email exchanges. Situations are evolving and dynamic therefore numbers stated are subject to change.