



Liberia IDSR Epidemiology Bulletin

2025 Epi-week 21 (May 19 – 25, 2025)

Country Population: 5,737,021

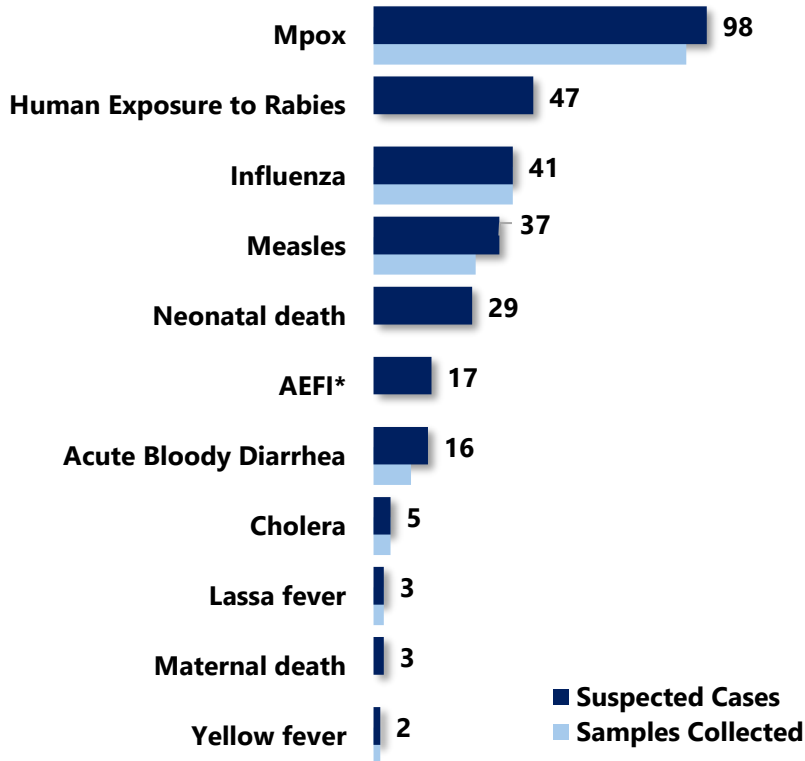
Volume 22 Issue 21

May 19 – 25, 2025

Data Source: CSOs from 15 Counties and Laboratory

Highlights

Figure 1. Public Health Events Reported



Keynotes and Events of Public Health Significance

- ◆ A total of 298 events of public health importance, including 32 deaths, were reported
- ◆ Completeness and Timeliness of health facility reports were 99%, respectively
- ◆ Ongoing Mpx outbreak in 12 counties
- ◆ Ongoing Lassa fever outbreak in two counties
- ◆ Ongoing Measles outbreak in four counties

*Adverse Event Following Immunization

Reporting Coverage

Table 1. Health Facility Weekly IDSR Reporting Coverage, Liberia, Epi-week 21, 2025

County	Expected Reports from Health Facility	Reports Received	Received on Time	Completeness (%)	Timeliness (%)
Bomi	29	29	29	100	100
Bong	64	64	64	100	100
Gbarpolu	18	18	18	100	100
Grand Bassa	38	38	38	100	100
Grand Cape Mount	36	36	36	100	100
Grand Gedeh	24	24	24	100	100
Grand Kru	25	25	25	100	100
Lofa	61	61	61	100	100
Margibi	64	63	63	98	100
Maryland	28	28	28	100	100
Montserrado	371	371	367	100	99
Nimba	102	102	102	100	100
Rivercess	21	21	21	100	100
River Gee	21	21	21	100	100
Sinoe	41	41	41	100	100
Liberia	943	942	938	99	99

942(99%)
Health facilities report IDSR data

98(100%)
Health districts reported IDSR data

938(99%)
Health facilities reported timely IDSR data

Legend:

≥80

<80

◆ The national target for weekly IDSR reporting is 80%. All counties reported on time except Bong and Grand Cape Mount. Health facility timeliness is monitored at the health district level.

Vaccine-Preventable Diseases

Measles

- ☞ Thirty-seven (37) suspected cases reported from Nimba (14), Montserrado (7), Sinoe (4), Margibi (3), Grand Gedeh (2), Lofa (2), Grand Kru (2), River Gee (2), and Maryland (1) Counties
 - Thirty (30) specimens were collected, 14 tested negative, 8 positive, 1 indeterminate and 14 pending testing
 - Fifty-four percent (20/37) of the suspected cases were vaccinated for measles (*see Table 2*)
- ☞ Cumulatively, 769 suspected cases have been reported since Epi-week 1.
 - Proportion of suspected cases with specimens collected: 61% (472/769)
 - Proportion of negative Measles cases tested for Rubella 65% (40/62) [negative-38, positive-2]

Table 2. Distribution and Vaccination Status of Measles Cases, Liberia, Epi-week 21, 2025

County	Reported cases	Vaccinated	Number of Doses Received		
			One Dose	Two Doses	Doses Not Indicated
Nimba	14	8	2	2	4
Montserrado	7	5	3	0	2
Sinoe	4	3	0	0	3
Margibi	3	0	0	0	0
Grand Gedeh	2	1	1	0	0
Lofa	2	0	0	0	0
Grand Kru	2	1	1	0	0
River Gee	2	1	0	1	0
Maryland	1	1	0	0	1
Total	37	20	7	3	10

Outbreak Section (January 6, 2022 – May 25, 2025)

- ☞ 16 new confirmed cases reported from Nimba (8), Montserrado (7), and Grand Kru (1) counties
- ☞ A total of 13,760 confirmed cases, including 96 deaths, have been reported
- ☞ Cumulative Case Fatality Rate (CFR): 0.7% (96/13,760)
- ☞ Four counties are currently in outbreak (Nimba, Grand Kru, Montserrado, and Grand Cape Mount).

Table 3. Measles Outbreak by County and Case Status, Liberia, December 13, 2021 – May 25, 2025

County	Total Cases	Active	Recovery	Deaths	No. of Districts
Montserrado	5,404	7	5,328	69	2/7
Nimba	1,770	8	1,758	4	5/11
Grand Bassa	943	0	936	7	0/8
Margibi	803	0	802	1	0/4
Bong	595	0	592	3	0/9
Maryland	1,327	0	1327	0	0/6
Lofa	292	0	292	0	0/6
Grand Kru	1,119	1	1,116	2	1/5
Grand Cape Mount	199	0	196	3	1/5
Bomi	148	0	143	5	0/4
Rivercess	90	0	88	2	0/6
Gbarpolu	64	0	64	0	0/5
Grand Gedeh	604	0	604	0	0/6
River Gee	155	0	155	0	0/6
Sinoe	247	0	247	0	0/10
Total	13,760	16	13,648	96	9/98

PUBLIC HEALTH ACTION

I. Coordination

- The County Health Teams have led the response with technical support from the NPHIL, MoH, and partners.

II. Epidemiological Surveillance

- Active case search ongoing in Montserrado and Grand Cape Mount counties

III. Case management

- Home-based case management ongoing in the affected communities in Montserrado County

IV. Immunization

- A one-day integrated measles campaign was conducted on May 8, 2025 and 32 children were vaccinated under 2 years of age in Commonwealth District
- Routine immunization ongoing across the Country

V. Laboratory

- Specimens were collected and tested positive from Somalia Drive-3, Buu-Yao-2, Mehnpea-Mah-1 and Commonwealth-1.

VI. Risk Communication & Community Engagement

- Visited the homes of affected children and health facilities and conducted health education on the prevention and spread of the disease in Somalia Drive District.

Challenges

- Delay testing of samples from NPHRL

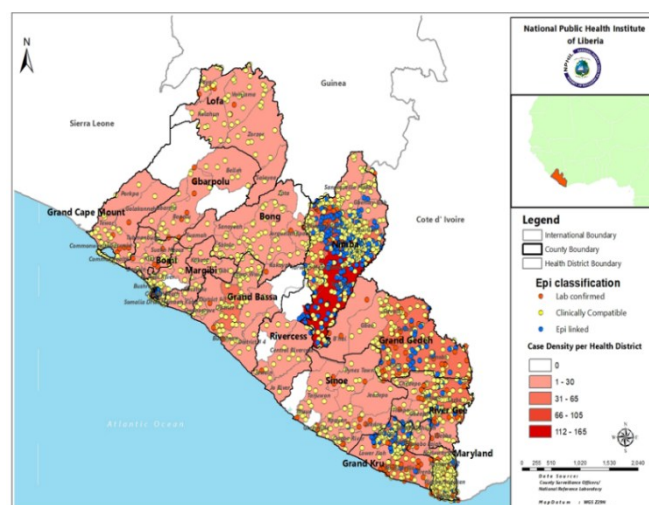


Figure 3: Measles Outbreak by County and Case Status, Liberia, Epi-week 1 - 21, 2025

Neonatal Tetanus

- Zero suspected cases reported
- Cumulatively, 3 cases have been reported since Epi-week 1.

Acute Flaccid Paralysis (AFP)

- Zero cases reported
- Cumulatively, 28 cases have been reported since Epi-week 1.
 - Thirteen (13) tested negative, 2 NPENT, 13 pending testing
- As of week 21, the annualized non-polio AFP rate is at **3.1/100,000 population** under 15 years of age
- Stool adequacy rate is 100% as of week 21, 2025

Table 4. Non-Polio AFP Rate 2/100,000 < 15 years by Reporting County, Liberia, Epi-week 1 – 21, 2025

County	< 15 years pop	# of AFP Cases Reported	# of Cases with Lab Result	Non-Polio AFP Rate	# of cases < 14 days specimen collected	% of stool < 14days	# of NPENTs	% of NPENT
Bomi	66515	1	0	4.3	1	100%	0	0%
Bong	225918	2	1	2.6	2	100%	0	0%
Gbarpolu	44507	1	1	6.5	1	100%	0	0%
Grand Bassa	140249	0	0	0.0	0	0%	0	0%
Grand Cape Mount	86679	1	1	3.3	1	100%	0	0%
Grand Gedeh	109687	0	0	0.0	0	0%	0	0%
Grand Kru	56311	1	0	5.1	1	100%	0	0%
Lofa	175438	4	2	6.6	4	100%	0	0%
Margibi	148644	4	1	7.8	3	75%	0	0%
Maryland	81693	0	0	0.0	0	0%	0	0%
Montserrado	969569	8	5	2.4	8	100%	1	13%
Nimba	297830	0	0	0.0	0	0%	0	0%
Rivercess	42988	6	4	40.3	6	100%	1	17%
River Gee	64196	0	0	0.0	0	0%	0	0%
Sinoe	69556	0	0	0.0	0	0%	0	0%
Liberia	2584117	28	15	3.1	27	96%	2	7%
Non-Polio AFP Rate		<2		<80%		<10%		Silent
		>2		≥80%		≥10%		
			Stool adequacy			Non-Polio Enterovirus		

Yellow Fever

- Two suspected cases were reported from Nimba and Sinoe Counties
- Specimens collected and tested negative
- Cumulatively, 24 suspected cases have been reported since Epi-week 1.
 - Proportion of suspected cases with specimens collected 23/24 (96%)
 - Proportion of suspected cases with specimens tested 19/24 (79%)
 - One lab-confirmed (positive) and 18 not a case (negative) and 5 pending testing

Mpox

- Ninety-eight (98) suspected cases were reported from Montserrado (37), Margibi (16), Bong (11), Lofa (10), Grand Cape Mount (7), Nimba (3), Bomi (3), River Gee (3), Grand Bassa (2), Sinoe (2), Grand Gedeh (2), Grand Kru (2), Maryland (1), and Gbarpolu (1) Counties
 - Ninety-two specimens were collected, and 86 tested: 52 positive, 34 negative, and 6 pending
- Cumulatively, 356 suspected cases have been reported, 339 specimens collected with 313 tested: 71 positive and 242 negative

Outbreak Section (January 1, 2024 – May 30, 2025)

- Fifty-two (52) new confirmed cases reported from Montserrado (29), Margibi (6), Maryland (1), Nimba (1), Lofa (3), Grand Kru (1), Grand Cape Mount (6), Grand Bassa (2), Bong (1), Bomi (2) Counties**
- Total of 331 contacts undergoing 21-day follow-up
- Total of 134 confirmed cases reported with no deaths recorded
- Twelve (12) counties with active cases

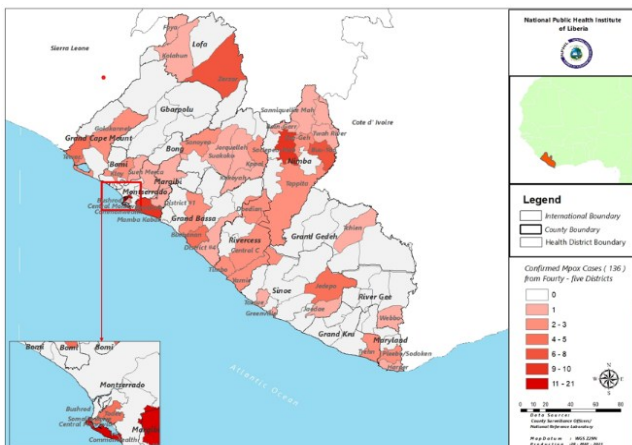


Figure 3. Distribution of Lab-confirmed Mpox cases by Health District, Liberia, January 1, 2024 – May 30, 2025

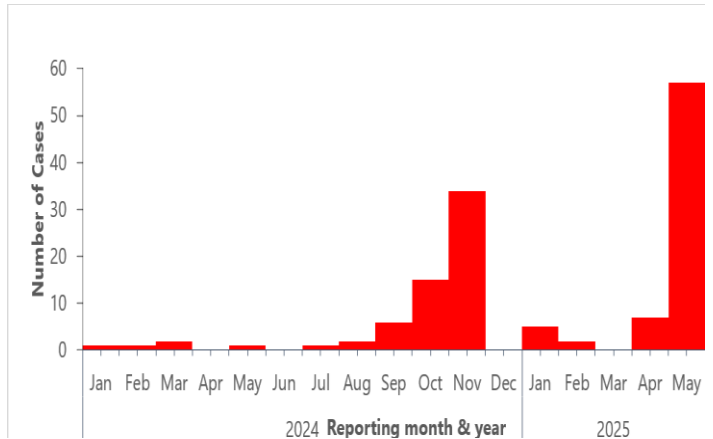


Figure 4. Epi-curve of Confirmed Mpox cases, Liberia, January 1, 2024 – May 30, 2025

PUBLIC HEALTH RESPONSE

I. Coordination

- Conduct regular IMS meetings at national and subnational levels in affected counties to direct response efforts
- Production of regular Sitreps and dissemination

II. Epidemiological Surveillance

- Active media scanning and community case finding continue through EIOS platform
- Continue to follow up with response counties to obtain updates on the status of the Mpox outbreak
- Fifty-six (56) confirmed cases in isolation: (Montserrado-30, Margibi-8, Grand Cape Mount-6, Lofa-3, Grand Bassa-2, Sinoe-1, Bomi-2, Maryland-1, Nimba-1, Grand kru-1, Bong-1)
- Three hundred thirty-one (331) contacts are undergoing follow-up (Margibi-125, Montserrado-100, Grand Cape Mount-34, Lofa-21, Sinoe-12, Grand Bassa-12, Grand Kru-9, Maryland-11, Bomi-7)

III. Case management

- Fifty-six (56) confirmed cases in isolation (Montserrado-30, Margibi-8, Grand Cape Mount-6, Lofa-3, Grand Bassa-2, Sinoe-1, Bomi-2, Maryland-1, Nimba-1, Grand Kru-1, Bong-1)

IV. Laboratory

- Sequencing results showed Monkeypox virus Clade IIa and Clade IIb
- The National Public Health Reference Laboratory continues the testing of Mpox samples

V. Risk Communication & Community Engagement

- Ongoing community engagement and awareness creation via a radio station in partnership between the RCCE team and affected County Health Teams

VI. Immunization

- There are ongoing vaccination exercises in the affected counties

NEXT STEPS

- Continue active case search in the affected communities
- Follow up with the counties to line list and monitor contacts
- Counties to prepare and submit situational reports

Dengue

- ☞ Zero suspected cases reported
- ☞ Cumulatively, two (2) suspected cases were reported since Epi-week 1.

Influenza-Like Illnesses

Influenza

- ☞ Forty-one (41) cases were reported from Montserrado (25), Nimba (10), Maryland (4), and Bong (2) Counties
 - Specimens were collected, 23 tested: 1 positive, 22 negative, and 18 pending testing
- ☞ Cumulatively, 616 suspected cases reported since Epi-week 1.
 - Six hundred fifteen (615) specimens were collected: 33 tested positive, 467 negative, 6 indeterminate, 2 rejected, and 107 pending testing

Covid-19

- ☞ Zero cases reported
- ☞ Cumulatively, 1 suspected case reported since Epi-week 1.

Viral Haemorrhagic Fever

Lassa fever

- ☞ Three (3) suspected cases were reported from Bong, Montserrado, and Rivercess Counties
 - Specimens were collected, and all tested negative
- ☞ Cumulatively, 86 suspected cases have been reported
 - Proportion of suspected cases with sample collected (85/86) 99%.
 - Proportion of suspected cases with specimens tested (77/85) 90%
 - Sixteen (16) positives, including 1 death, and 60 negatives
 - Case Fatality Rate: 6.3%

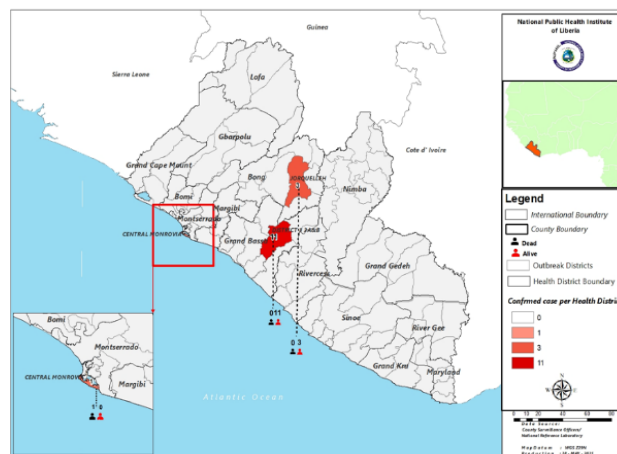


Figure 5. Geospatial distribution of confirmed Lassa fever by Health District, Liberia, Epi-week 1 - 21, 2025

Outbreak Section (January 6, 2022 – May 25, 2025)

- ☞ **No new confirmed case reported**
- ☞ Thirty-seven (37) contacts completed 21-day follow-up
- ☞ Total of 19 contacts are undergoing 21-day follow-up
- ☞ Total of 194 confirmed cases, including 57 deaths, reported
- ☞ Cumulative Case Fatality Rate (CFR): 29% (57/194)
- ☞ Two counties are currently in outbreak (Bong & Grand Bassa)

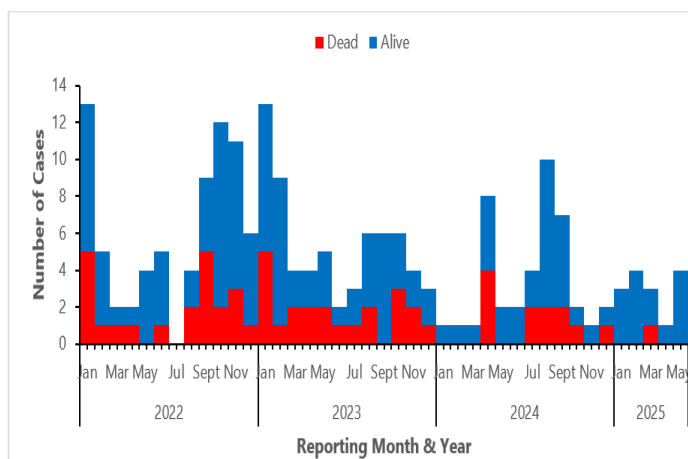


Figure 6. Epi-curve of confirmed Lassa fever cases, Liberia, January 6, 2022 – May 25, 2025

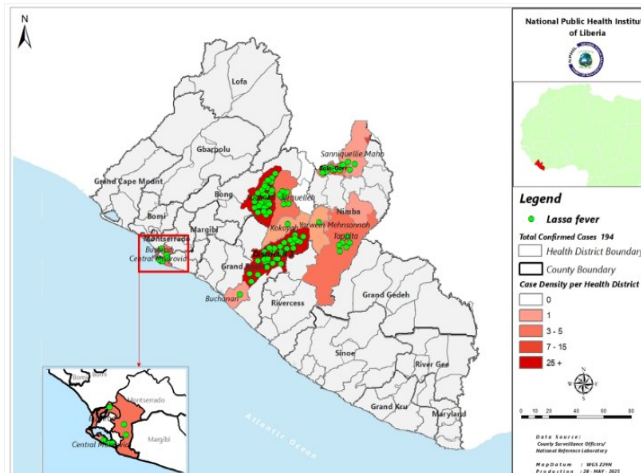


Figure 7. Geospatial distribution of outbreak district with number of confirmed Lassa fever cases, Liberia, January 6, 2022 – May 25, 2025

PUBLIC HEALTH RESPONSE

I. Coordination

- The National Public Health Institute of Liberia (NPHIL) and the Ministry of Health (MoH) are providing technical support to the affected counties with support from partners

II. Epidemiological Surveillance

- Active case search ongoing in affected communities
- Total of 19 contacts are undergoing 21-day follow-up (Bong County)
- Two counties (Bong & Grand Bassa) are currently in outbreak
- Weekly sit-reps developed and disseminated to stakeholders

III. Risk Communication and Community Engagement

- Risk communication and community engagement is being conducted in the affected communities

IV. Case management

- Ribavirin distributed to affected counties
- There are two active confirmed cases in Grand Bassa County (LAC Hospital)

V. Dead Body Management

- A total of 57 deaths recorded among confirmed cases
- Safe and dignified burials conducted for the deceased cases

VI. Laboratory

- The National Public Health Reference Laboratory continues testing of Lassa fever samples
- A total of 194 Lassa fever cases have been confirmed since this outbreak

Challenges

- There is currently limited ribavirin supply in country
- Limited logistics (gasoline, communication cards, fuel, etc) to support active case finding
- Lack of support for contact training and active case search/investigation in affected counties

Table 6: Summary of Lassa fever Outbreak, Liberia, January 6, 2022 – May 25, 2025

County	Outbreak Districts	Outbreak Start Date	Total suspected	Total confirmed	HCWs confirmed	Total Deaths	Deaths in HCWs	CFR %	Total Contacts	# HCW contacts	Contacts became cases	Contacts under follow up	Contacts completed	Days in countdown	Outbreak Status
Montserrado	Bushrod	13-Feb-23	17	1	0	0	0	0%	29	21	0	0	29	Completed	Ended
	Central Monrovia	27-Nov-23	1	2	0	1	0	50%	49	0	0	0	49	Completed	Ended
	Central Monrovia	3-Mar-23	38	2	0	1	0	50%	28	27	0	0	28	Completed	Ended
	Bushrod	30-Apr-24	2	1	0	0	0	0%	14	6	0	0	14	Completed	Ended
	Central Monrovia	28-Mar-25	1	1	0	1	0	100%	50	13	0	0	50	Completed	Ended
Bong	Suakoko	21-Apr-23	192	54	18	13	2	24%	496	114	6	0	417	Completed	Ended
	Jorquelleh	15-Oct-23	14	6	3	1	1	17%	121	86	3	0	169	Completed	Ended
	Kokoyah	6-Jun-24	3	1	0	0	0	0%	8	0	0	0	8	Completed	Ended
	Suakoko	29-Jul-24	11	5	1	0	0	0%	37	14	0	0	37	Completed	Ended
	Suakoko	23-Feb-24	31	3	0	0	0	0%	29	14	0	0	29	Completed	Ended
	Salala	8-Mar-24	2	2	0	1	0	50%	21	0	0	0	21	Completed	Ended
	Jorquelleh	11-Apr-24	3	2	0	1	0	0%	41	30	0	0	41	Completed	Ended
	Suakoko	19-Nov-24	3	2	0	1	0	50%	8	5	0	0	8	Completed	Ended
	Suakoko	16-May-25	4	2	0	0	0	0%	19	11	0	19	0	Active	Ongoing
	Jorquelleh	6-May-25	2	1	0	0	0	0%	32	23	0	0	32	1	Countdown
Grand Bassa	District 3A&B	21-Aug-23	87	44	0	10	0	23%	177	40	40	0	159	Completed	Ended
	Buchanan	11-Aug-23	2	1	0	1	0	100%	4	2	0	0	4	Completed	Ended
	District 3A&B	30-Apr-24	7	3	0	1	0	33%	12	3	0	0	12	Completed	Ended
	District 3A&B	3-Sep-24	7	6	0	1	0	17%	27	10	0	0	27	Completed	Ended
	District 3A&B	20-Dec-24	13	12	0	0	0	0%	11	2	0	0	11	Active	Ongoing
Nimba	Saclepea-Mah	21-Nov-23	4	2	0	1	0	50%	5	0	0	0	5	Completed	Ended
	Sanniquele-Mah	6-Feb-23	43	15	0	9	0	60%	43	35	8	0	43	Completed	Ended
	Tappita	29-Jul-24	5	2	0	1	0	50%	27	24	0	0	27	Completed	Ended
	Tappita	20-Nov-23	12	5	0	3	0	60%	88	39	4	0	77	Completed	Ended
	Bain-Garr	1-Jun-23	25	6	0	3	0	50%	61	25	0	0	31	Completed	Ended
	Bain-Garr	15-Apr-24	5	2	0	1	0	50%	25	7	0	0	25	Completed	Ended
River Gee	Bain-Garr	18-Jul-24	20	10	0	5	0	50%	173	98	1	0	173	Completed	Ended
Putupo	25-Nov-22	2	1	0	1	0	100%	14	0	0	0	14	Completed	Ended	
Total			556	194	22	57	3	29%	1649	649	62	19	1540		

Legend: Outbreaks in countdown stage in reporting districts Active/ ongoing outbreaks not in countdown stage with active response interventions in reporting districts

Diarrheal Diseases

Acute Bloody Diarrhoea (Shigellosis)

- ☞ Sixteen (16) suspected cases were reported from Sinoe (8), Grand Kru (2), Lofa (1), Margibi (1), Bong (1), Grand Gedeh (1), River Gee (1), and Nimba (1) Counties
 - Eleven (11) specimens were collected, 1 tested positive, 2 negative and 13 pending testing
- ☞ Cumulatively, 262 suspected cases have been reported since Epi week 1.
 - One hundred fifty-six (156) specimens were collected, 123 tested: 108 negative, and 15 positive

Severe Acute Watery Diarrhoea (Cholera)

- ☞ Five (5) suspected cases were reported from Sinoe (2), Nimba (2), and Gbarpolu (1) Counties
 - Specimens were collected, 2 tested negative, and 3 pending testing
- ☞ Cumulatively, 224 suspected cases have been reported since Epi week 1.
 - One hundred sixteen (116) specimens were collected, 64 tested negative

Events of Public Health Importance

Maternal Mortality

- ☞ Three (3) deaths were reported from Montserrado (2), and Grand Bassa (1) Counties
- ☞ Primary causes of death were postpartum hemorrhage (1), anemia (1), and pending investigation (1)
- ☞ Cumulatively, 97 deaths have been reported, of which 87/97 (90%) were reported from health facilities.
 - Proportion of deaths reviewed 71/97 (73%)

Neonatal Mortality

- Twenty-nine (29) deaths were reported from Montserrado (16), Gbarpolu (2), Maryland (1), Lofa (1), Grand Gedeh (1), and Sinoe (1) Counties, including eight perinatal deaths from Gbarpolu (4), Maryland (2), and Bong (2)
- Primary causes of death were asphyxia (11), sepsis (8), preterm (2), acute respiratory syndrome (2), and pending investigation (6)
- Cumulatively, 418 deaths have been reported since Epi-week 1
 - Proportion of deaths reviewed 317/418 (76%)

Adverse Events Following Immunization (AEFI)/Adverse Drug Reaction (ADR)

- Seventeen (17) events were reported from Sinoe (8), Gbarpolu (3), Grand Cape Mount (3), Montserrado (1), Grand Bassa (1), and Rivercess (1) Counties
- All reported events were categorized as *non-serious*
- Related vaccines included Penta (8), HPV (3), Measles (2), Malaria (1), Mpox (1), Pfizer (1), and 1 Unknown
- Cumulatively, 316 events have been reported since Epi-week 1.

Other Reportable Diseases

Animal bite (Human Exposure to Rabies)

- Forty-seven (47) dog bite cases were reported from Nimba (12), Montserrado (8), Lofa (7), Grand Bassa (5), Grand Kru (4), Bong (3), Grand Gedeh (2), Gbarpolu (2), Maryland (2), Margibi (1), and River Gee (1) Counties
 - Proportion of cases investigated is 47% (22/47)
 - PEP administered to 4 persons: Bong (2) and Montserrado (2) Counties
- Cumulatively, 1,364 cases have been reported since Epi-week 1, including 6 attributable deaths

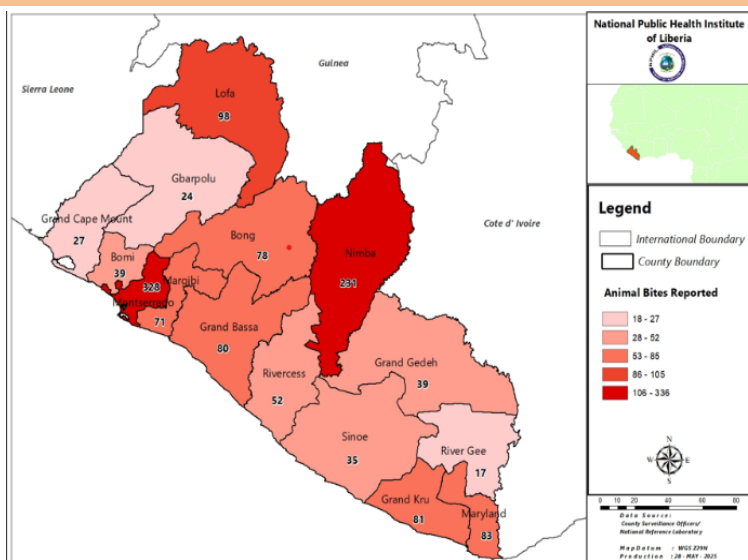


Figure 8. Geographical distribution of Human Exposure to Animal Bites Cases by County, Liberia, Epi-week 1 - 21, 2025

Meningitis

- Zero suspected cases were reported
- Cumulatively, 9 suspected cases have been reported since Epi-week 1.
 - Proportion of specimen collected 7/9 (78%)
 - Proportion of specimens tested 6/7 (86%)

Buruli Ulcer

- Zero suspected cases were reported
- Cumulatively, three (3) cases have been reported since Epi-week 1.

Border Surveillance Update

A total of 6,315 travellers were screened at eight (8) designated out of forty-five (45) official Points of Entry, with incoming travellers accounting for 47% (2,945/6,315) (Table 6).

Table 6. Cross-border activity at the POE for incoming and outgoing travelers, Liberia, Epi-week 21, 2025

Type of Ports	Point of Entry	Weekly Total	Arrival	Departure	Total travelers with YB	Yellow Book Damage	Card Replaced	Travelers Vaccinated against YF & Issued book	Alerts detected / Verified
Airport	James S. Paynes	77	36	41	0	0	0	0	0
	Robert Int'l Airport	4178	1893	2285	4133	0	45	16	0
Seaport	Freeport of Monrovia	288	144	144	288	0	0	0	0
	Buchanan Port	170	85	85	170	0	0	0	0
Ground Crossing	Bo Water Side	809	397	412	796	0	13	0	2
	Ganta	82	42	40	61	3	0	3	0
	Yekepa	172	88	84	40	6	6	0	0
	Loguatu	539	260	279	541	0	0	0	0
Total		6,315	2,945	3,370	6,029	9	64	19	2

Note: Yellow book (YB) issue for both arrival and departure; Vaccination coverage for both arrival and departure

Public Health Measures

National level

- ☞ Maryland and Grand Cape Mount County Health Teams supplied POEs with additional IPC materials such as hand-wash buckets, barriers, liquid soap, thermo-flash, surgical gloves, etc
- ☞ Port Health Units, in collaboration with RIA management, conducted Mpox training for 37 staff at RIA
- ☞ National Port Authority made provision of hand washing materials such as buckets, liquid soap, etc
- ☞ NPHIL supplied Infection Control Equipment (IEC) and Infection Prevention and Control (IPC) materials
- ☞ A Joint Security meeting to inform counterparts about the Mpox situation in Liberia was conducted in Ganta, Nimba County
- ☞ Massive awareness and vaccination are ongoing for contacts and high-risk individuals in affected Mpox counties
- ☞ Produced and disseminated situation reports (Lassa fever and Mpox, etc.)
- ☞ Ongoing reclassification of suspected cases (Lassa fever, Mpox, AFP, and Measles)
- ☞ Production and Dissemination of Weekly Epidemiological Bulletin

County-level

☞ Surveillance

- Ongoing active case search and investigation for Mpox in affected counties
- Production of situational reports
- Active search ongoing in affected and surrounding communities
- Awareness and sensitization of Mpox surveillance is ongoing across the 15 counties
- Maternal and newborn death review is ongoing in counties

☞ Case Management

- Administration of PEP
- Isolation, management, treatment, and active case search for Lassa fever and Measles cases are ongoing in affected counties

Appendix

Summary of Immediately Reportable Diseases, Conditions, and Events by County

COUNTIES		BOMI	BONG	GBARPOLU	GRAND BASSA	GRAND CAPE MOUNT	GRAND GEDEH	GRAND KRU	LOFA	MARGIBI	MARYLAND	MONTERRADO	NIMBA	RIVERCESS	RIVER GEE	SINOE	Total Weekly	Cumulative Reported	Cumulative Lab-confirmed	
No. of Expected Health District		4	9	5	8	5	6	5	6	4	6	7	11	6	6	10	98			
No. of Health District Reported		4	9	5	8	5	6	5	6	4	6	7	11	6	6	10	98			
Vaccine Preventable Diseases	Acute Flaccid Paralysis (Suspected Polio)	A	0	0	0	0	0	0	0	0	0	0	0	0	0	0	0	0	28	0
		D	0	0	0	0	0	0	0	0	0	0	0	0	0	0	0	0	0	0
	Measles	A	0	0	0	0	0	2	2	2	3	1	7	14	0	2	4	37	769	47
		D	0	0	0	0	0	0	0	0	0	0	0	0	0	0	0	0	0	0
	Neonatal Tetanus	A	0	0	0	0	0	0	0	0	0	0	0	0	0	0	0	0	3	0
		D	0	0	0	0	0	0	0	0	0	0	0	0	0	0	0	0	0	0
	Mpox	A	3	11	1	2	7	2	2	10	16	1	37	3	0	3	0	98	356	71
		D	0	0	0	0	0	0	0	0	0	0	0	0	0	0	0	0	0	0
Yellow fever	A	0	0	0	0	0	0	0	0	0	0	0	1	0	0	1	2	24	1	
	D	0	0	0	0	0	0	0	0	0	0	0	0	0	0	0	0	0	0	0
Viral Hemorrhagic Fever	Dengue fever	A	0	0	0	0	0	0	0	0	0	0	0	0	0	0	0	0	2	0
		D	0	0	0	0	0	0	0	0	0	0	0	0	0	0	0	0	0	0
	Ebola Virus Disease / Marburg Virus Disease	A	0	0	0	0	0	0	0	0	0	0	0	0	0	0	0	0	0	0
		D	0	0	0	0	0	0	0	0	0	0	0	0	0	0	0	0	0	0
	Lassa fever	A	0	1	0	0	0	0	0	0	0	0	1	0	1	0	0	3	86	15
		D	0	0	0	0	0	0	0	0	0	0	0	0	0	0	0	0	1	1
Influenza-Like Illnesses	COVID-19	A	0	0	0	0	0	0	0	0	0	0	0	0	0	0	0	0	0	0
		D	0	0	0	0	0	0	0	0	0	0	0	0	0	0	0	0	0	0
	Influenza	A	0	2	0	0	0	0	0	0	0	4	25	10	0	0	0	41	616	33
		D	0	0	0	0	0	0	0	0	0	0	0	0	0	0	0	0	0	0
Diarrheal Diseases	Acute Bloody Diarrhoea (Shigellosis)	A	0	1	0	0	1	2	1	1	0	0	1	0	1	8	16	262	15	
		D	0	0	0	0	0	0	0	0	0	0	0	0	0	0	0	0	0	0
	Severe Acute Watery Diarrhoea (Cholera)	A	0	0	1	0	0	0	0	0	0	0	2	0	0	2	5	224	0	
		D	0	0	0	0	0	0	0	0	0	0	0	0	0	0	0	0	0	0
Events of Public Health Importance	Maternal Mortality	D	0	0	0	1	0	0	0	0	0	2	0	0	0	0	3	97		
	Neonatal Mortality	D	0	2	6	0	1	0	1	0	2	16	0	0	0	1	29	418		
	Adverse Events Following Immunization (AEFI)	A	0	0	3	1	3	0	0	0	0	1	0	1	0	8	17	316	0	
		D	0	0	0	0	0	0	0	0	0	0	0	0	0	0	0	0	0	0
	Unexplained Cluster of Health Events/Disease	A	0	0	0	0	0	0	0	0	0	0	0	0	0	0	0	0	0	0
		D	0	0	0	0	0	0	0	0	0	0	0	0	0	0	0	0	0	0
Other Reportable Diseases	Tuberculosis	A	0	0	0	0	0	0	0	0	0	0	0	0	0	0	0	0	0	0
		D	0	0	0	0	0	0	0	0	0	0	0	0	0	0	0	0	0	0
	Human Exposure to Rabies (Suspected Human Rabies)	A	0	3	2	5	0	2	4	7	1	2	8	12	0	1	0	47	1268	0
		D	0	0	0	0	0	0	0	0	0	0	0	0	0	0	0	0	0	0
	Meningitis	A	0	0	0	0	0	0	0	0	0	0	0	0	0	0	0	0	9	0
		D	0	0	0	0	0	0	0	0	0	0	0	0	0	0	0	0	0	0
	Unexplained Cluster of deaths	A	0	0	0	0	0	0	0	0	0	0	0	0	0	0	0	0	0	0
		D	0	0	0	0	0	0	0	0	0	0	0	0	0	0	0	0	0	0
Neglected Tropical Diseases	Buruli Ulcer	A	0	0	0	0	0	0	0	0	0	0	0	0	0	0	0	0	0	0
		D	0	0	0	0	0	0	0	0	0	0	0	0	0	0	0	0	0	0
	Yaws	A	0	0	0	0	0	0	0	0	0	0	0	0	0	0	0	0	0	0
		D	0	0	0	0	0	0	0	0	0	0	0	0	0	0	0	0	0	0
TOTAL			3	20	13	9	10	8	10	21	21	10	97	43	2	7	24	298	4479	183

D = Dead A = Alive

Notes

- ☞ **Completeness** refers to the proportion of expected weekly IDSR reports received (target: $\geq 80\%$)
- ☞ **Timeliness** refers to the proportion of expected weekly IDSR reports received by the next level on time (target: $\geq 80\%$). The time requirement for weekly IDSR reports:
 - Health facility - required on or before 5:00 pm every Saturday to the district level
 - Health district - required on or before 5:00 pm every Sunday to the county level
 - County - required on or before 12:00 noon every Monday to the national level
- ☞ **Non-polio AFP rate** is the proportion of non-polio AFP cases per 100,000 among the estimated population under 15 years of age in 2025 (annual target: $\geq 2/100,000$)
- ☞ **Non-measles febrile rash illness rate** refers to the proportion of negative measles cases per 100,000 population
- ☞ **Annualized maternal mortality rate** refers to the maternal mortality rate of a given period of less than one year, and it is the number of maternal deaths per 100,000 live births
- ☞ **Annualized neonatal mortality rate** refers to the neonatal mortality ratio of a given period of less than one year, and it is the number of neonatal deaths per 1,000 live births
- ☞ **Epi-linked** refers to any suspected case that has not had a specimen taken for serologic confirmation but is linked to a laboratory-confirmed case
- ☞ **Confirmed case** refers to a case whose specimen has tested positive or reactive upon laboratory testing or has been classified as confirmed by either epidemiologic linkage with a confirmed case or clinical compatibility with the disease or condition

Epidemiological bulletin published with support from WHO and CDC

For comments or questions, please contact

Ralph W. Jetoh, MD, MPH

Director

Infectious Disease and Epidemiology Division

National Public Health Institute of Liberia

Republic of Liberia

Email: ralphica2000@gmail.com

Phone: +231.77.737.2655/ +231.88.652.6388

Website: www.nphil.gov.lr

National Public Health Institute of Liberia (NPHIL)

MISSION

To prevent and control public health threats by promoting healthy outcomes and serving as a source of knowledge

VISION

A centre of excellence to create health outcomes for Liberians through a strong preventive health system and expertise

EDITORIAL TEAM

DIDE / NPHIL

A. N. Mianah
J. S. Kokro
M.G. Jeuronlon
E. Dwalu
A.B. Corvah
S. K. Zayzay
T. L. Hall
S. L. Flomo
M. S. Quiah
P. J. Thomas
H. M. Sherman
M.D. Vaye
N. K. Dovillie
A. Coker
S. Nuwolo
M. Gbeyeah
E. Junius
H. Howard-Bridges
B.A. Adeyemi
J.E.A. Saad

Ministry of Health
WHO Liberia Office
US CDC Liberia Office
Africa CDC-Liberia Office

Data sources

Data and information is provided by the fifteen County Surveillance Officers and National Public Health Reference Laboratory via regular weekly reports, telephone calls and email exchanges. Situations are evolving and dynamic therefore numbers stated are subject to change.