



LASSA FEVER SITUATIONAL REPORT

National Public Health Institute of Liberia (NPHIL)



REPORTING PERIOD:	August 1-7, 2025
NUMBER:	165
DATE:	August 7, 2025

Table 1: Key Indicators

Reporting year	Suspected Cases	Confirmed Cases	Death (confirmed cases)	Case Fatality Rate % (CFR)	Counties Affected (confirmed cases)	Districts Affected (confirmed cases)
Current	1	1	0	0	1	1
2025 (cumulative)	126	22	6	27	5	5
2022 -2024 Cumulative	679	179	56	31	5	11

HIGHLIGHTS

- **One new confirmed case reported from Bong County**
- One new suspected case reported from Bong County
- Forty-nine (49) contacts line listed and undergoing 21 days follow up

Liberia Lassa fever Case Update: January 1, 2024– August 7, 2025

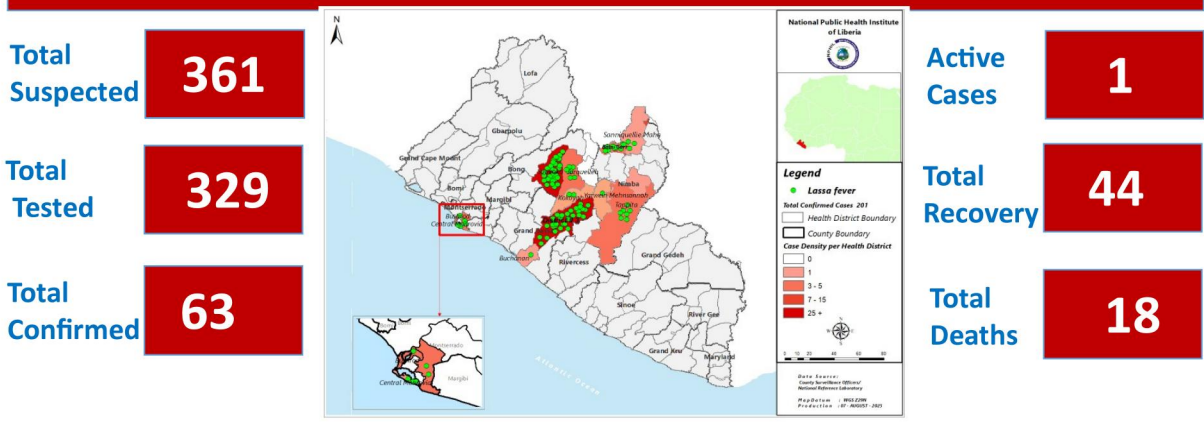


Figure 1: Summary of geospatial distribution of Lassa fever cases reported in Liberia, January 1, 2024-August 7, 2025

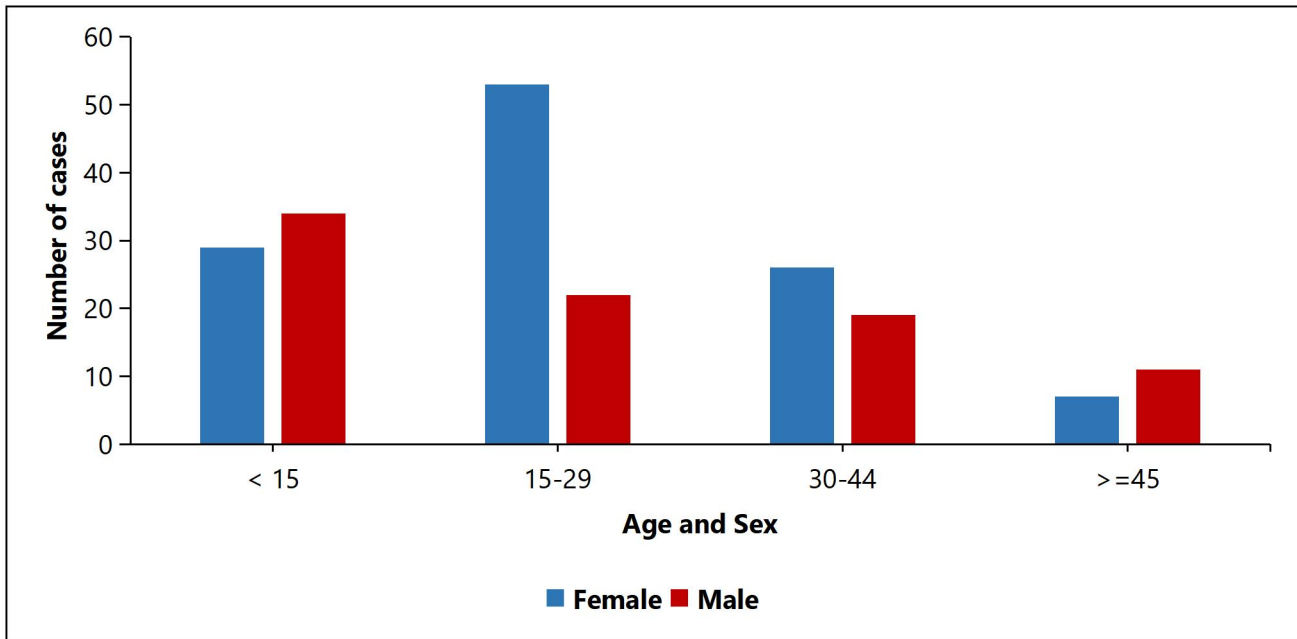


Figure 2: Age and sex distribution of Confirmed Lassa fever cases in Liberia, January 1, 2022 – August 7, 2025

Table 2: Confirmed Cases Reported by County and Health District, Liberia, January 1, 2022 – August 7, 2025

County	Reporting District	Active Cases	Recovery	Deaths	Cumulative
Bong	Suakoko	0	53	18	71
	Jorquelleh	0	7	2	9
	Kokoya	1	0	0	1
Grand Bassa	District 3 A&B	0	55	12	67
	Buchana	0	0	1	1
Montserrado	Bushrod	0	2	0	2
	Central Monrovia	0	2	4	6
Nimba	Bain-Garr	0	7	9	16
	Saclepea-Mah	0	3	0	3
	Sanniequellie-Mah	0	6	9	15
	Tappita	0	3	6	9
River Gee	Potupo	0	0	1	1
Total Confirmed Cases & Deaths		1	138	62	201

Legend: Red = Counties/Districts with Active Cases/Contacts; **Yellow** = Counties/Districts in Countdown

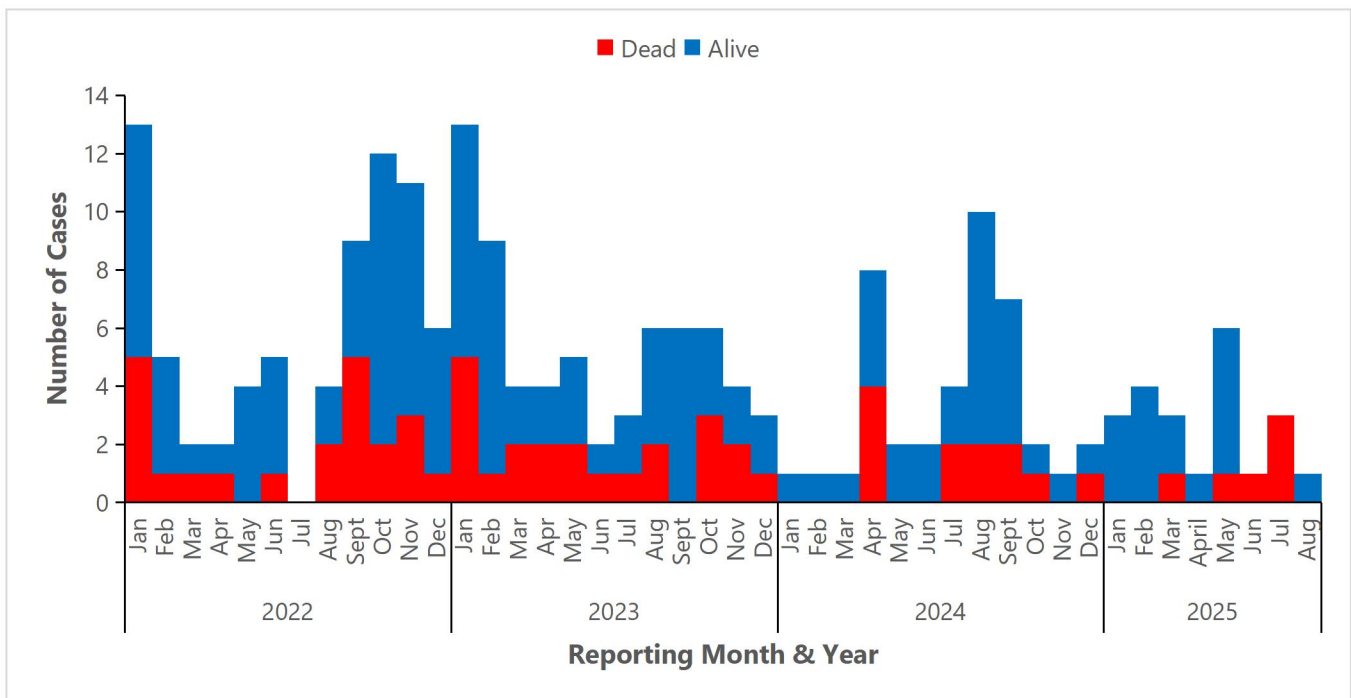


Figure 2: Epi-curve of confirmed Lassa fever cases by reporting month in Liberia, January 1, 2022-August 7, 2025

Table 3: Summary of Lassa fever cases and contact in Liberia, Jan 1, 2024 – August 7, 2025

Variables	Cumulative
Total suspected cases reported to the national level	361
Total samples collected	344
Total samples tested	329
Total Laboratory confirmed	63
Total confirmed cases alive/recovered	45
Total deaths among confirmed cases	18
Case fatality rate (CFR)	29%
Total confirmed cases in isolation/active	0
Total contacts line listed	681
Total contacts undergoing 21 days follow up	49

PUBLIC HEALTH ACTIONS

I. Coordination

- The response has been led by the County Health Teams with technical support from the National Public Health Institute of Liberia (NPHIL), the Ministry of Health (MOH) and partners
 - The Incident Management Systems (IMS) have been activated in the affected counties
 - The PHEOCs in the response counties are in response mode coordinating the response

II. Surveillance

- Continuous follow up with counties in response mode for updates on status of the Lassa fever outbreak
- Active case search is being conducted in affected communities
- Forty-nine (49) contacts undergoing 21 days follow up (Montserrado-24, Nimba-19, Bong-6)
- Four counties (Montserrado, Bong, Nimba & Grand Bassa) are currently in outbreak
- Developed and disseminated weekly sitreps to stakeholders

III. Case management

- There is one confirmed case currently in isolation (Bong County)

IV. Laboratory

- The National Public Health Reference Laboratory (NPHRL) continues the testing of Lassa fever samples.
- Total of 201 cases have been confirmed by the NPHRL since this outbreak

V. Risk Communication and Community Engagement

- Community engagement and health education conducted in affected districts/communities (Montserrado, Bong, Grand Bassa, & Nimba)

VI. Dead Body Management

- A total of 62 confirmed deaths recorded and were buried under safe and dignified conditions

Key Challenges

- There is limited ribavirin supply in country
- Limited logistics (gasoline, communication cards, fuel, etc) to support active case search in affected counties

For comments or questions, please contact

**Emmanuel Dwalu, BSc, BSEd, PDGE, FETP, MPH
Epidemiologist/Lassa fever Focal Person**

Division of Infectious Disease and Epidemiology, NPHIL

Cell: +231.77.088.3760 / +231.88.688.3760

Email: dwaluemmanuel@gmail.com

**Ralph W. Jetoh, M.D., MPH
Director**

Division of Infectious Disease and Epidemiology, NPHIL

Cell: +231.77.737.2655

Email: ralphica2000@gmail.com

Issuing Authority:

**Dougbeh Chris Nyan, M.D.
Director General**

National Public Health Institute of Liberia

Cell: +231.77.794.9027

Email: Dougbeh-Chris.Nyan@nphil.gov.lr / dnyan@doctor.com