



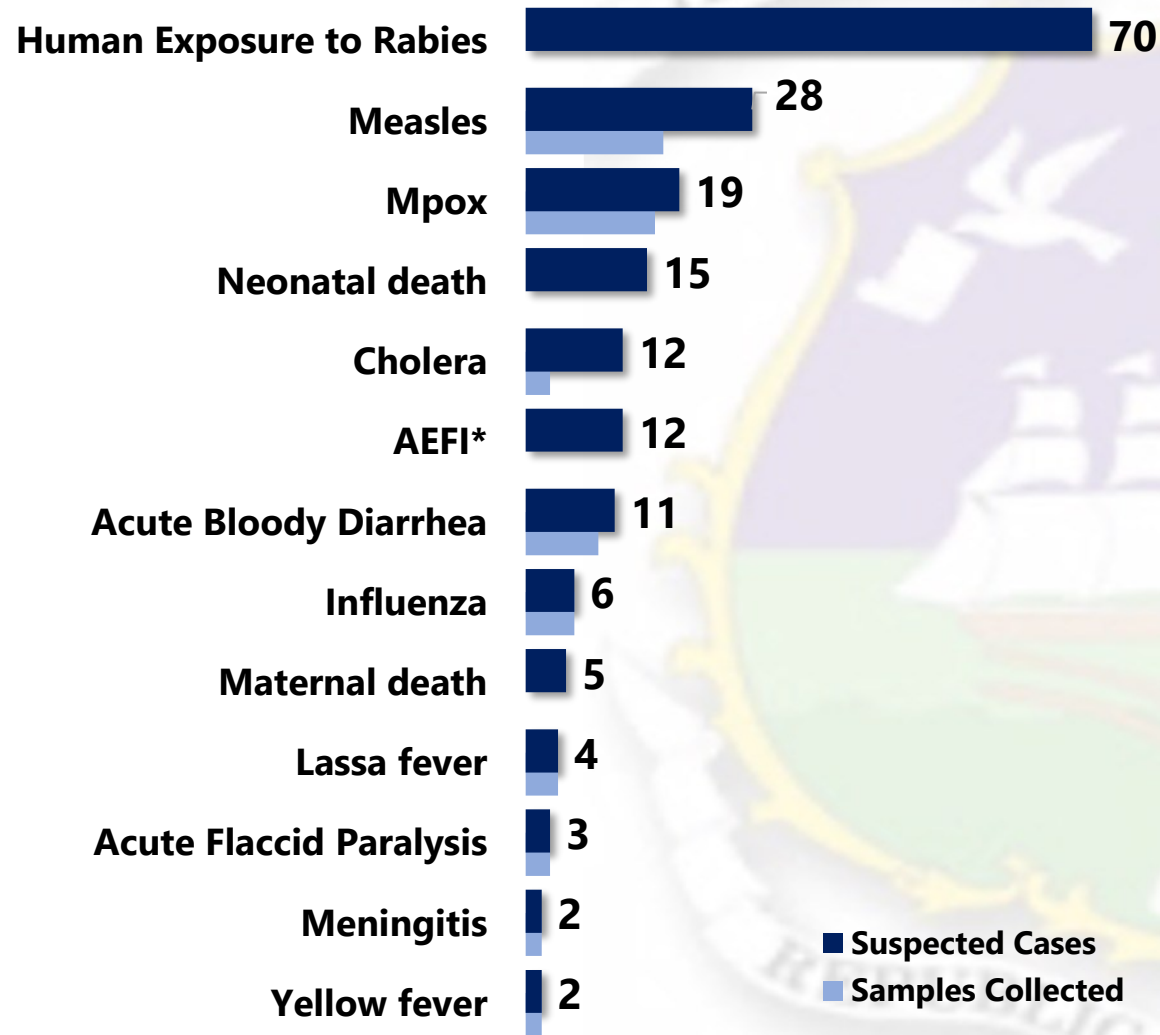
# **Weekly Update**

# **Liberia Public Health Surveillance & Response System**

**Reporting Week: 4**  
**Reporting Period: January 20 - 26, 2025**

*Data Source: 15 County Surveillance Officers and National Reference Lab*

# Public Health Events reported during the week



\* Adverse Events Following Immunization (AEFI)

# Highlights of Key Public Health Events

- ◆ **A total of 189** events of public health importance, including **20** deaths reported
- ◆ **Completeness and timeliness** of health facility reports were **99% and 99%**, respectively
- ◆ **Ongoing Lassa fever** outbreak in one county
- ◆ **Ongoing Measles** outbreak in one county
- ◆ **Ongoing Mpox** outbreak in nine counties



# REPORTING COVERAGE



# Health Facility IDSR Reporting Coverage, Liberia, Epi-week 4, 2025

County	Expected Reports From Health Facility	Reports Received	Received on Time	Completeness (%)	Timeliness (%)
Bomi	29	29	29	100	100
Bong	64	64	64	100	100
Gbarpolu	18	18	18	100	100
Grand Bassa	38	38	38	100	100
Grand Cape Mount	36	36	36	100	100
Grand Gedeh	24	24	24	100	100
Grand Kru	25	25	25	100	100
Lofa	61	61	61	100	100
Margibi	64	63	63	99	100
Maryland	28	28	28	100	100
Montserrado	371	371	367	100	99
Nimba	102	102	102	100	100
Rivercess	21	21	21	100	100
River Gee	21	21	21	100	100
Sinoe	41	41	41	100	100
<b>Liberia</b>	<b>943</b>	<b>942</b>	<b>938</b>	<b>99</b>	<b>99</b>

Legend:

≥80

<80

Expected HFs timeliness and completeness are calculated at the level of the reporting district



# VACCINE PREVENTABLE DISEASES

# MEASLES...1/7

➤ **Twenty-eight (28) suspected cases** reported

- Nimba (18), Grand Kru (3), Grand Bassa (1), Grand Gedeh (1), Montserrado (1), Lofa (1), Margibi (1), Gbarpolu (1), and Bong (1) Counties

➤ **Seventeen (17) specimens** collected and pending testing

➤ **Cumulatively, 107 suspected cases** have been reported since Epi-week 1.

- Proportion of cases collected 61% (65/107)

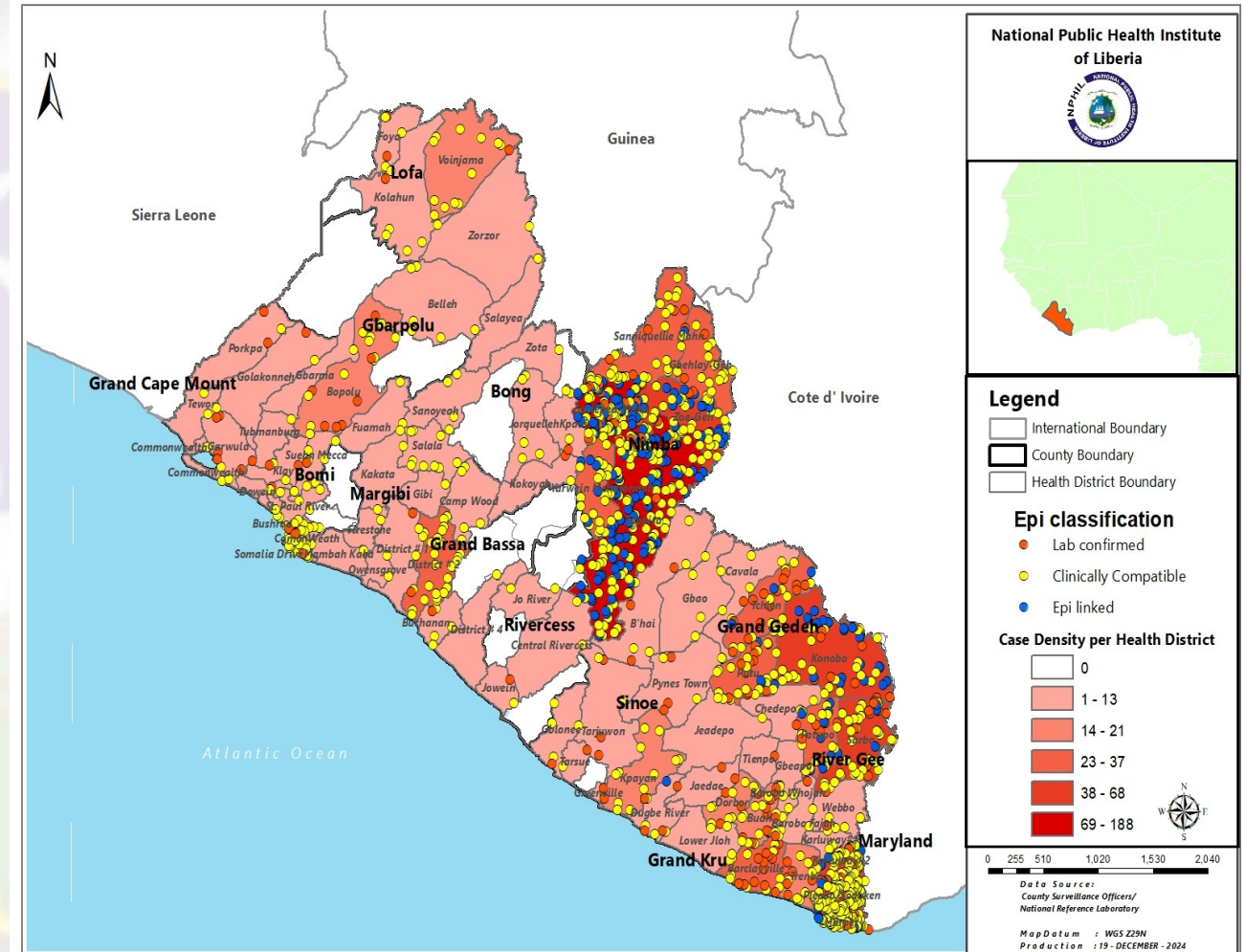
## Vaccination status of Measles Cases by Reporting County, Liberia, Epi week 4, 2025

County	Reported cases	Vaccinated	Number of Doses Received		
			One Dose	Two Doses	Doses Not Indicated
Nimba	18	7	3	4	0
Grand Kru	3	0	0	0	0
Grand Bassa	1	1	0	0	1
Grand Gedeh	1	1	1	0	0
Montserrado	1	1	1	0	0
Lofa	1	1	1	0	0
Margibi	1	1	1	0	0
Gbarpolu	1	1	0	1	0
Bong	1	1	0	1	0
<b>Total</b>	<b>28</b>	<b>14</b>	<b>7</b>	<b>6</b>	<b>1</b>

# MEASLES...5/7

## Measles Outbreak by County and Case Status, Liberia, December 13, 2021 – January 26, 2025

County	Total Cases	Active	Recovery	Deaths	No. of Districts
Montserrado	5,373	0	5,304	69	0/7
<b>Nimba</b>	<b>1557</b>	<b>18</b>	<b>1531</b>	<b>4</b>	<b>1/11</b>
Grand Bassa	950	0	917	7	1/8
Margibi	803	0	802	1	0/4
Bong	578	0	575	3	0/9
Maryland	1,320	0	1320	0	0/6
Lofa	292	0	292	0	0/6
Grand Kru	1,100	0	1,098	2	0/5
Grand Cape Mount	187	0	184	3	0/5
Bomi	148	0	143	5	0/4
Rivercess	84	0	83	1	0/6
Gbarpolu	64	0	64	0	0/5
Grand Gedeh	604	0	604	0	0/6
River Gee	134	0	134	0	0/6
Sinoe	247	0	247	0	0/10
<b>Total</b>	<b>13,430</b>	<b>18</b>	<b>13,313</b>	<b>95</b>	<b>1/98</b>



**Measles Cases distribution by Health District, Liberia, December 13, 2021 – January 26, 2025**

# ACUTE FLACCID PARALYSIS (AFP)

- **Three (3) suspected cases** reported
  - Bong
  - Gbarpolu
  - Lofa
- **Specimen collected** and shipped
- **Cumulatively, 5** cases reported
- Stool adequacy rate is **100%** as of week 4, 2025



# YELLOW FEVER

- Two (2) suspected cases were reported from Grand Bassa and Nimba Counties
- Specimens were collected, 1 tested presumptive positive, and 1 pending testing
- **Cumulatively, 5** cases have been reported since Epi-week 1
  - Proportion of suspected cases with samples collected (5/5)  
100%

# INFLUENZA

- **Six (6) suspected cases** reported from Montserrado County
- **Specimens were collected** and pending testing
- **Cumulatively, 26 suspected cases** reported since Epi-week 1
  - **Twenty-six (26)** specimens were collected, 18 tested negative, 6 pending testing, and 2 rejected

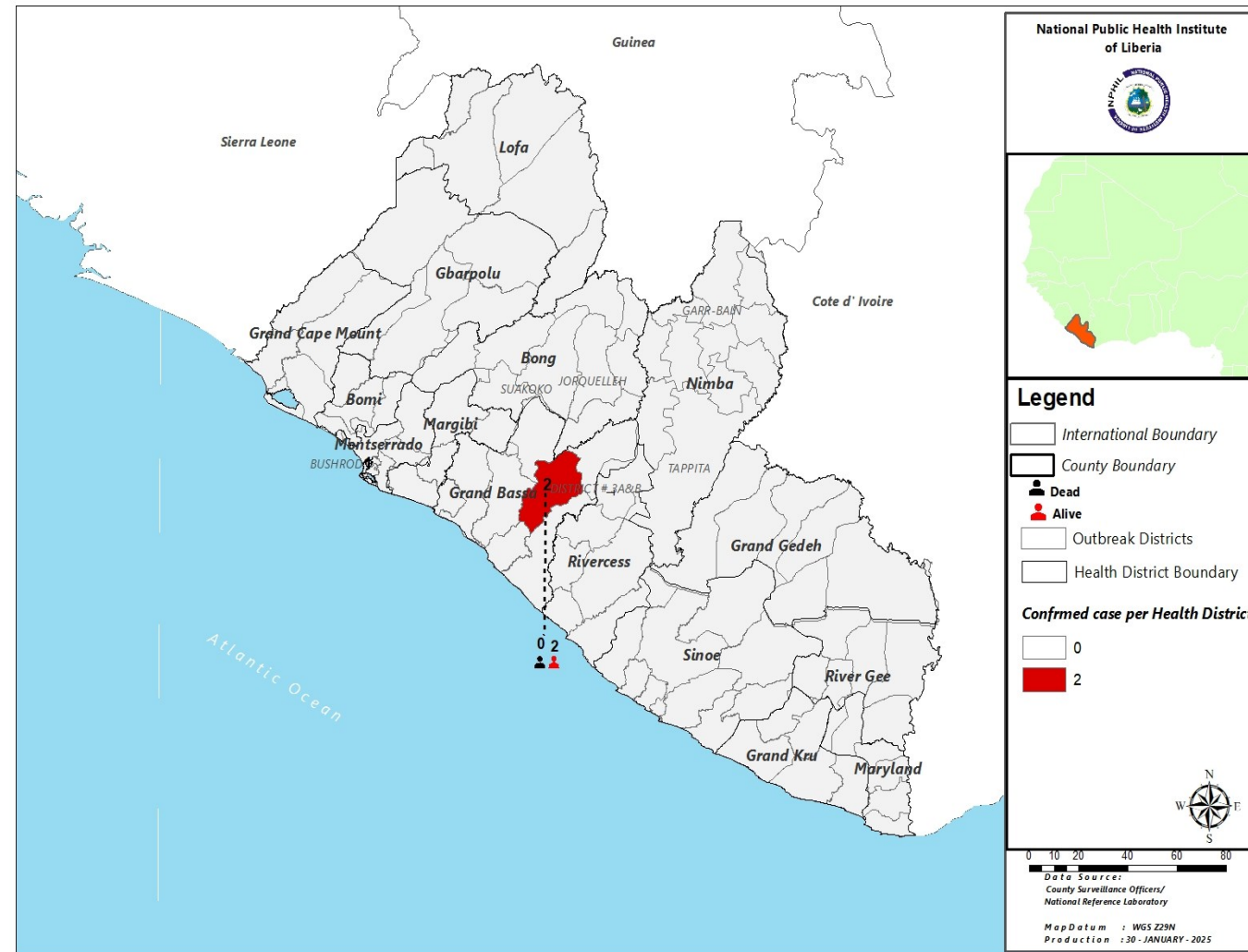


# VIRAL HEMORRHAGIC FEVER



# LASSA FEVER...1/6

- **Four (4) suspected** cases reported
  - Bong (2), Grand Bassa (1), and Lofa (1) Counties
- **Specimens** were collected, 1 tested positive, and 2 negative
- **Cumulatively, 13 suspected** cases been reported
  - Proportion of suspected cases with sample collected (13/13) 100%
  - Proportion of suspected cases with sample tested (10/13) 77%
    - 2 positive and 8 negative



**Geospatial distribution of confirmed Lassa fever cases by Health District, Liberia, Epi-week 4, 2025**

# LASSA FEVER..4/6

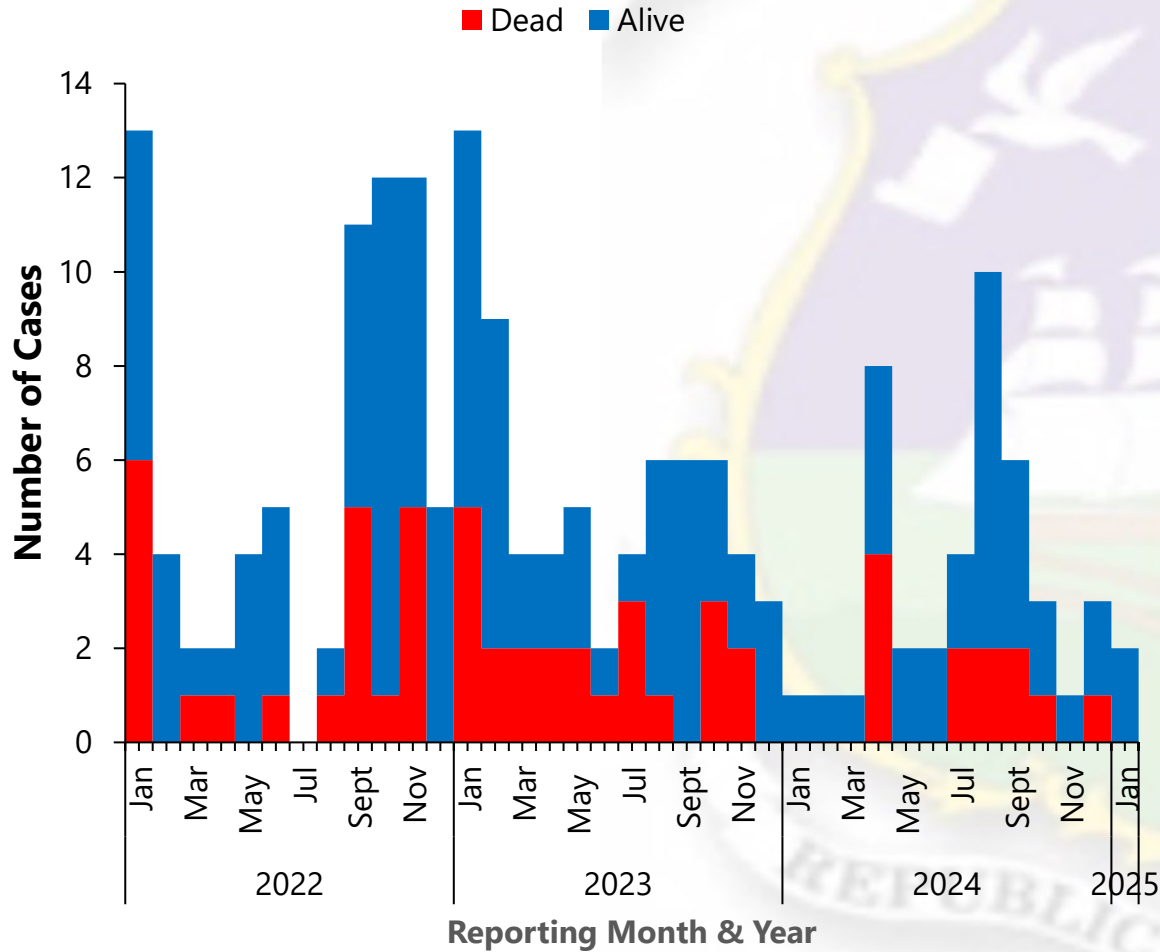
## Summary of Lassa fever Outbreak, Liberia, January 6, 2022 - January 26, 2025

County	Outbreak Districts	Outbreak Start Date	Suspected	Total confirmed	HCWs confirmed	Total Deaths	Deaths in HCWs	CFR %	Total Contacts	# HCW contacts	Contacts became cases	Contacts under follow up	Contacts completed	Days in countdown	Outbreak Status
<b>Montserrado</b>	Bushrod	13-Feb-23	17	1	0	0	0	0%	29	21	0	0	29	Completed	Ended
	Central Monrovia	27-Nov-23	1	2	0	1	0	50%	49	0	0	0	49	Completed	Ended
	Central Monrovia	3-Mar-23	38	2	0	1	0	50%	28	27	0	0	28	Completed	Ended
	Bushrod	30-Apr-24	2	1	0	0	0	0%	14	6	0	0	14	Completed	Ended
<b>Bong</b>	Suakoko	21-Apr-23	192	54	18	13	2	24%	496	114	6	0	417	Completed	Ended
	Jorquelleh	15-Oct-23	14	6	3	1	1	17%	121	86	3	0	169	Completed	Ended
	Kokoyah	6-Jun-24	3	1	0	0	0	0%	8	0	0	0	8	Completed	Ended
	Suakoko	29-Jul-24	11	5	1	0	0	0%	37	14	0	0	37	Completed	Ended
	Suakoko	23-Feb-24	31	3	0	0	0	0%	29	14	0	0	29	Completed	Ended
	Salala	8-Mar-24	2	2	0	1	0	50%	21	0	0	0	21	Completed	Ended
	Jorquelleh	11-Apr-24	3	2	0	1	0	0%	41	30	0	0	41	Completed	Ended
	Suakoko	19-Nov-24	3	2	0	1	0	50%	8	5	0	0	8	Completed	Ended
<b>Grand Bassa</b>	District 3A&B	21-Aug-23	87	44	0	10	0	23%	177	40	40	0	159	Completed	Ended
	Buchanan	11-Aug-23	2	1	0	1	0	100%	4	2	0	0	4	Completed	Ended
	District 3A&B	30-Apr-24	7	3	0	1	0	33%	12	3	0	0	12	Completed	Ended
	District 3A&B	3-Sep-24	7	6	0	1	0	17%	27	10	0	0	27	Completed	Ended
	<b>District 3A&amp;B</b>	<b>20-Dec-24</b>	<b>3</b>	<b>3</b>	<b>0</b>	<b>0</b>	<b>0</b>	<b>0%</b>	<b>13</b>	<b>3</b>	<b>0</b>	<b>5</b>	<b>13</b>	<b>Active</b>	<b>Ongoing</b>
<b>Nimba</b>	Saclepea-Mah	21-Nov-23	4	2	0	1	0	50%	5	0	0	0	5	Completed	Ended
	Sanniquellie-Mah	6-Feb-23	43	15	0	9	0	60%	43	35	8	0	43	Completed	Ended
	Tappita	29-Jul-24	5	2	0	1	0	50%	27	24	0	0	27	Completed	Ended
	Tappita	20-Nov-23	12	5	0	3	0	60%	88	39	4	0	77	Completed	Ended
	Bain-Garr	1-Jun-23	25	6	0	3	0	50%	61	25	0	0	31	Completed	Ended
	Bain-Garr	15-Apr-24	5	2	0	1	0	50%	25	7	0	0	25	Completed	Ended
	Bain-Garr	18-Jul-24	20	10	0	5	0	50%	173	98	1	0	173	Completed	Ended
<b>River Gee</b>	Putupo	25-Nov-22	2	1	0	1	0	100%	14	0	0	0	14	Completed	Ended
<b>Total</b>			<b>538</b>	<b>181</b>	<b>22</b>	<b>56</b>	<b>3</b>	<b>31%</b>	<b>1550</b>	<b>603</b>	<b>62</b>	<b>5</b>	<b>1460</b>		

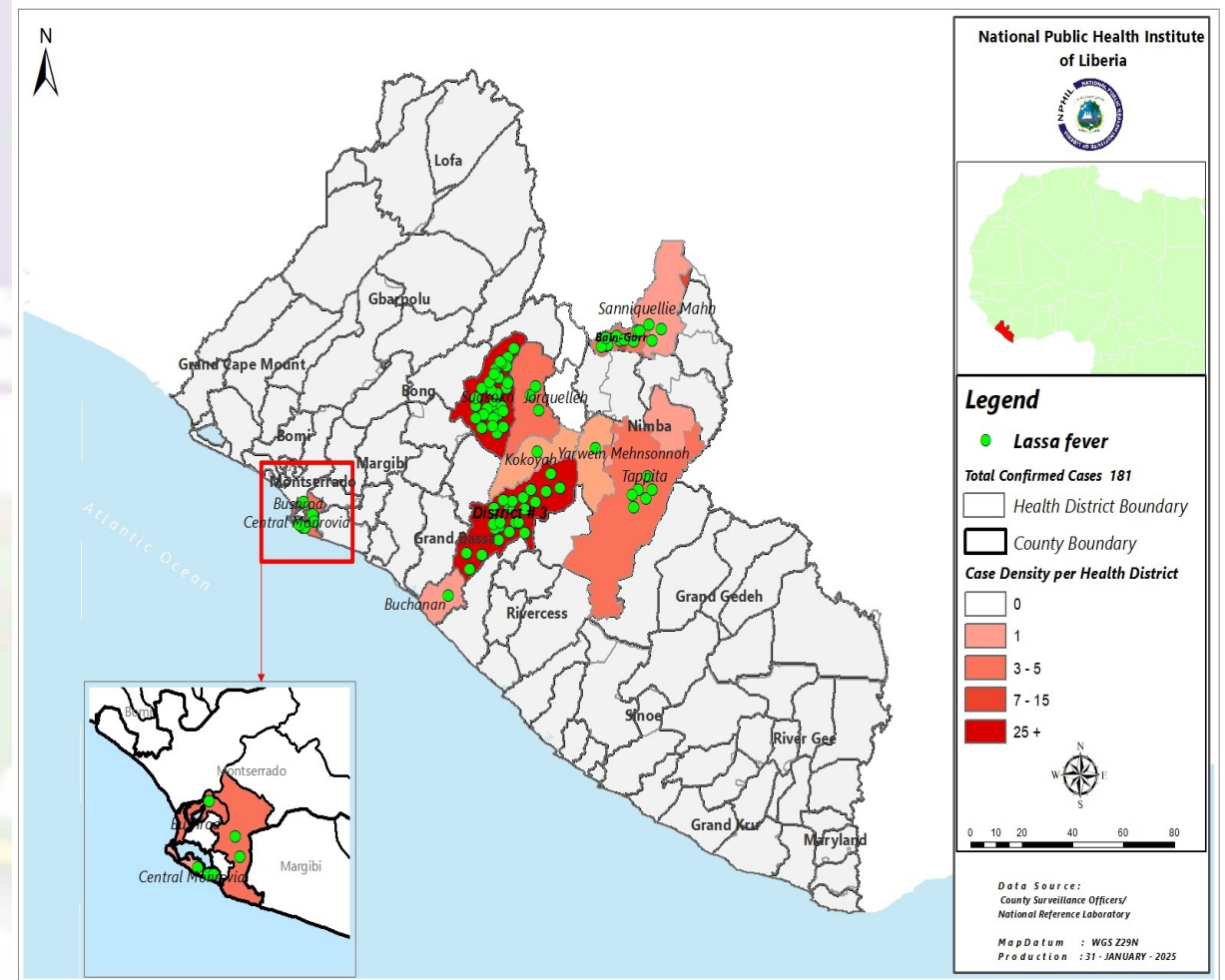
Outbreak Section

# LASSA FEVER...5/6

Epi-curve of Confirmed Lassa Fever Cases by Outcome, Liberia, Jan 6, 2022 – Jan 26, 2025



Geospatial distribution of outbreak district with number of confirmed Lassa fever cases, Liberia, Jan 6, 2022 – Jan 26, 2025



# LASSA FEVER...6/6

## Public Health Actions

### Coordination

- The National Public Health Institute of Liberia (NPHIL) and the Ministry of Health (MoH) are providing technical support to the affected counties with support from partners

### Surveillance

- **Active case search ongoing in affected communities**
- Grand Bassa is currently in active outbreak mode
- Weekly sit-reps developed and disseminated to stakeholders

### Laboratory

- National Public Health Reference Laboratory continues testing of Lassa fever samples
- A total of 181 Lassa fever cases have been confirmed since this outbreak

### Case Management

- **Ribavirin distributed to affected counties**
- There is one active case currently under follow-up



# DIARRHEAL DISEASES



## **ACUTE BLOODY DIARRHEA (Suspected Shigellosis)**

- **Eleven (11) cases** were reported
  - Grand Gedeh (3), Bomi (3), Sinoe (1), Nimba (1), Grand Kru (1), Maryland (1), and Lofa (1) Counties
- **Nine specimens** were collected, 2 tested negative and 7 pending testing
- **Cumulatively, 30** cases reported since Epi-week 1
  - Twenty-one (21) specimens were collected with 10 received at the NRL, 8 tested negative and 2 pending testing

## **SEVERE ACUTE WATERY DIARRHEA (Suspected Cholera)**

- **Twelve (12) cases** were reported
  - Lofa (6), Nimba (2), Grand Gedeh (1), Sinoe (1), Maryland (1), and Bomi (1) Counties
- **Three specimens** were collected and pending testing
- **Cumulatively, 29** cases reported since Epi-week 1
  - Twelve specimen were collected, 4 received, and tested negative



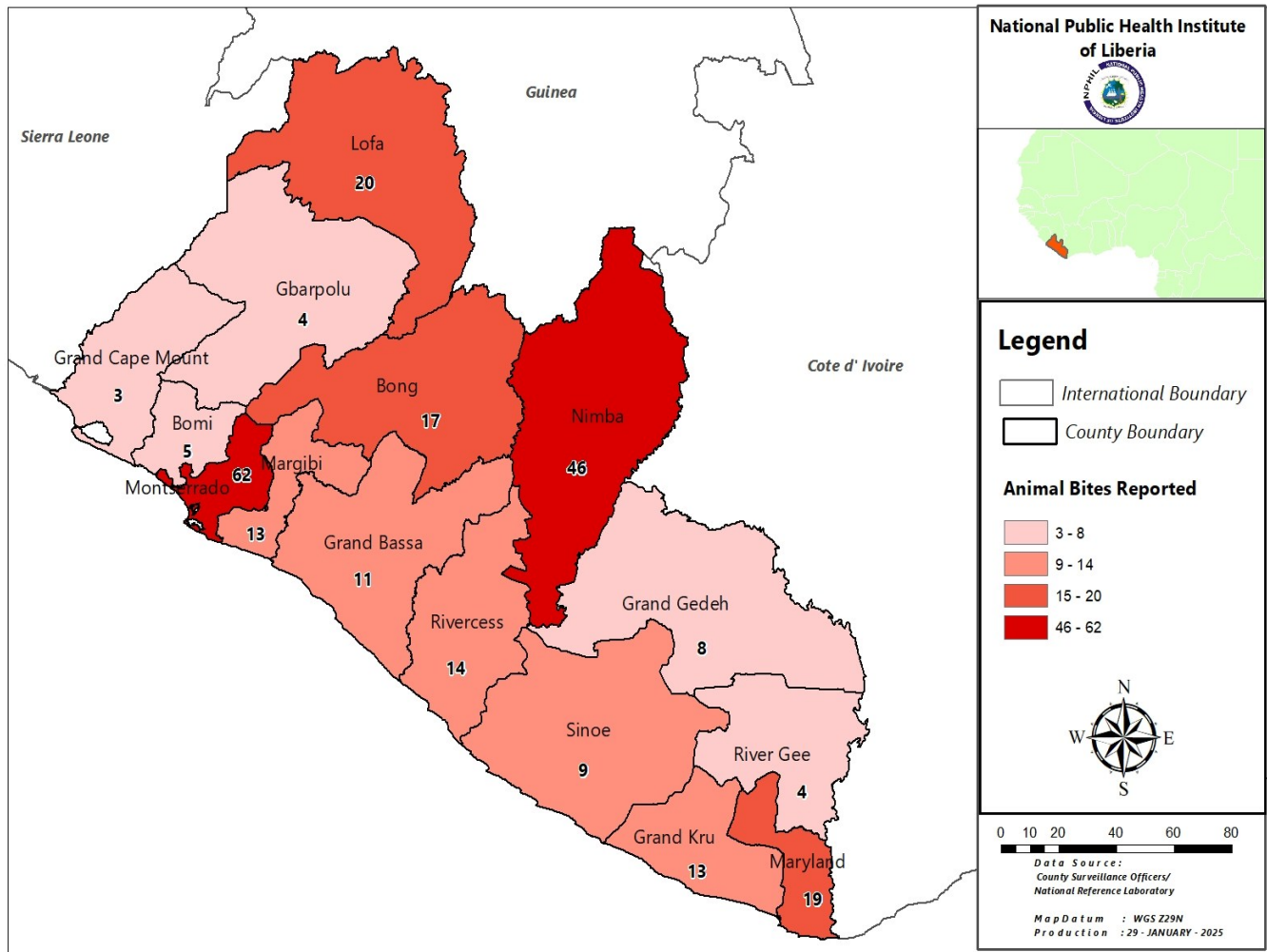
# OTHER REPORTABLE DISEASES



# ANIMAL BITE (Human Exposure to Rabies)...1/2

- **Seventy (70) dog bite** cases
  - Montserrado (13), Nimba (9), Rivercess (9), Maryland (7), Grand Kru (6), Margibi (4), Grand Bassa (4), Lofa (4), Bomi (3), Sinoe (2), Gbarpolu (2), River Gee (2), Grand Gedeh (2), and Grand Cape Mount (1) Counties
- **Proportion** of cases investigated
  - 71% (50/70)
  - Cases were clinically managed and discharged
- **Cumulatively, 254 suspected** cases reported

**Distribution of Human Exposure to Animal Bites Cases by County, Liberia Epi-week 4, 2025**



# MENINGITIS

- **Two (2)** cases reported from Nimba County
- **Specimens** were collected and tested negative
- **Cumulatively, 2 suspected** cases reported since Epi-week 1
  - Proportion of specimens collected: 2/2(100%)
  - Proportion of specimens tested: 2/2 (100%)

# MPOX...1/5

- **Nineteen (19) suspected cases reported**
  - Nimba (8), Sinoe (6), Lofa (2), Grand Cape Mount (1), Grand Bassa (1), and Bomi (1) Counties
- **Sixteen (16) specimens were collected, 3 tested positive, 11 negative, and 2 pending testing**
- **Cumulatively, 46 suspected cases reported since Epi-week 1**
  - Proportion of specimens collected: 41/46 (89%)
  - Proportion of specimens tested: 35/41 (85%)

# MPOX...2/5

## Liberia Mpox Case Update: Jan 1, 2024 – Jan 27, 2025

Total Suspected

458

Total Tested

397

Total Lab-confirmed

68



Active Cases

5

Recovery Cases

63

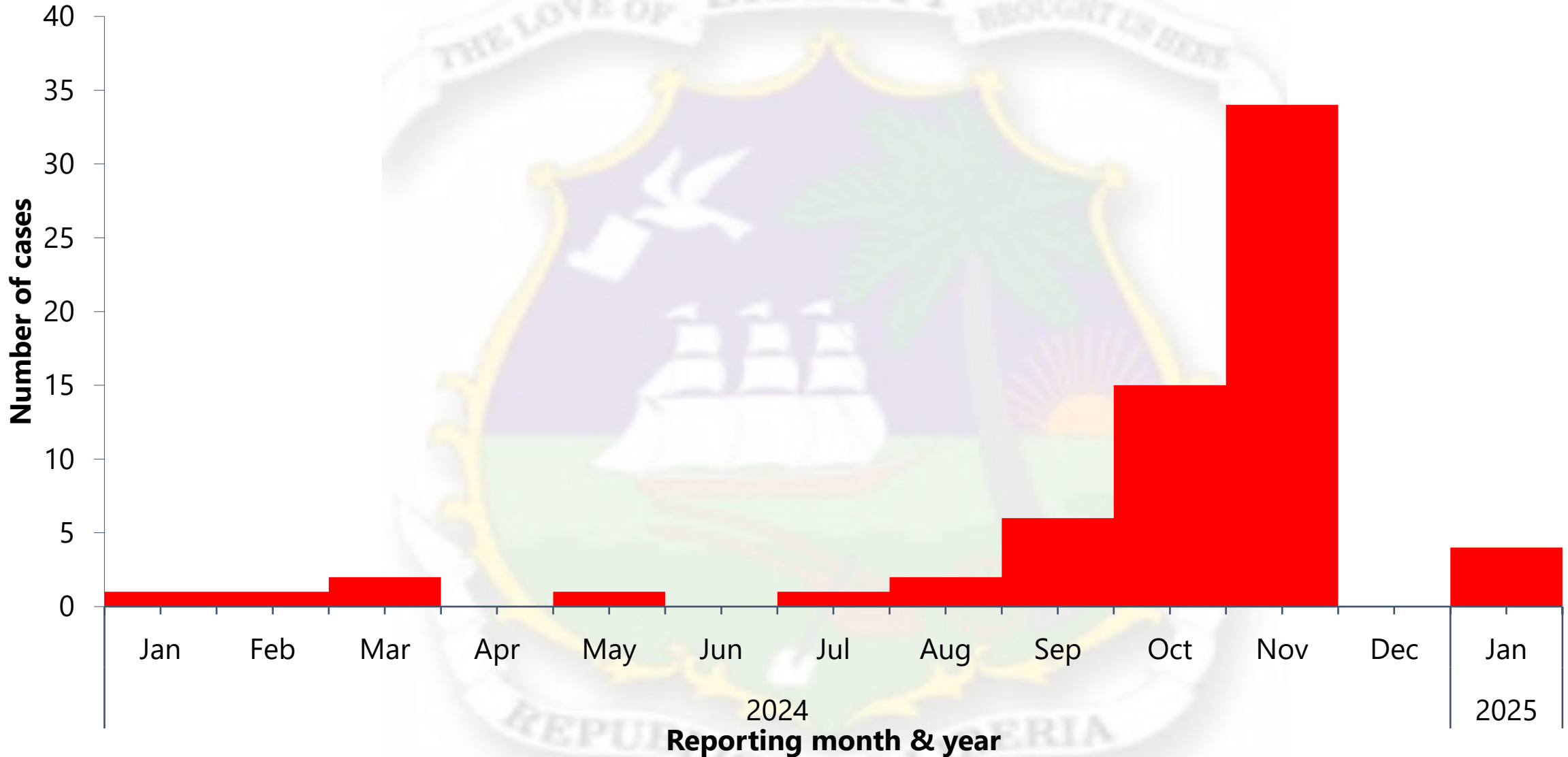
Deaths

0

**Total confirmed: 68** (Nimba 25, Lofa 7, Bong 6, Rivercess 7, Sinoe 5, Grand Bassa 5, Montserrado 3, Margibi 3, Maryland 2, River Gee 1, Grand Kru 1, Bomi 1, Grand Cape Mount 1, Grand Gedeh 1)

**Call 4455 to report suspected cases**

# MPOX...4/5



**Weekly epi-curve of Mpox Lab-confirmed cases detected in Liberia, Jan 1, 2024 - Jan 26, 2025**

# MPOX...5/5

## Public Health Actions Coordination

- Conduct regular IMS meetings at national and subnational levels in affected counties to direct response efforts
- Production of regular Sitreps and dissemination

## Surveillance

- Active media scanning and community case finding continue through the EIOS platform
- Continue to follow up with response counties to obtain updates on the status of the Mpox outbreak
- Twenty-nine (29) contacts line listed and under follow-up (Nimba-16, Grand Bassa-7, Rivercess-6)

## Case Management

- Five (5) cases currently in isolation: (Nimba-3, Grand Bassa-1, Rivercess-1)

## Laboratory

- Sequencing results showed Mpox virus Clade IIa and Clade IIb
- The Liberia National Public Health Reference Laboratory continues the testing of Mpox samples

## Risk Communication & Community Engagement

- Ongoing community engagement and awareness creation via a radio station in partnership between the RCCE team and affected counties

## Next step

- Continue active case search in the affected communities



# EVENTS OF PUBLIC HEALTH IMPORTANCE



# MATERNAL MORTALITY


- **Five (5) deaths** were reported
  - Nimba (3) and Montserrado (2) Counties
- **Reported causes:**
  - PPH (2), Eclampsia (1), Sepsis (1), and 1 pending investigation
- **Reporting site:**
  - Health Facility: 4/5 (80%)
  - Community: 1/5 (20%)
- **Cumulatively, 13** deaths reported
  - Proportion of deaths reviewed (7/13) 54%

# NEONATAL MORTALITY


- **Fifteen (15) deaths** reported
  - Montserrado (12), Maryland (1), Margibi (1), and Nimba (1) Counties
- **Reported causes:**
  - Asphyxia (10), Sepsis (2), Preterm (1), Complicated Malaria (1), and 1 pending investigation
- **Reporting sites:**
  - Health facility: 15/15 (100%)
- **Cumulatively, 52** deaths reported
  - Proportion of deaths reviewed (22/52) 42%

# ADVERSE EVENTS FOLLOWING IMMUNIZATION (AEFI)

- **Twelve (12) events were reported**
  - Gbarpolu (4), Grand Gedeh (4), Grand Bassa (2), Sinoe (1), and River Gee (1) Counties
- All reported cases were categorized as non-serious
- **Related vaccines:**
  - Penta (8), Rota (2), OPV (1), and Td (1)
- **Cumulatively, 52** events reported since Epi-week 1



# **BORDER SURVEILLANCE UPDATE**



# Travelers and IDSR Alerts Detected and Verified at Points of Entry, Liberia, Epi-week 4, 2025

Type of Ports	Point of Entry	Weekly Total	Arrival	Departure	Total travelers with YB	Yellow Book Damage	Card Replaced	Travelers Vaccinated against YF & Issued book	Alerts detected/ Verified
Airport	James S. Paynes	36	14	22	0	0	0	0	0
	Robert Int'l Airport	4238	1981	2257	4176	1	47	7	0
Seaport	Freeport of Monrovia	138	69	69	138	0	0	0	0
	Buchanan Port	152	76	76	152	0	0	0	0
Ground Crossing	Bo Water Side	545	308	237	523	0	18	4	0
	Ganta	94	39	55	24	2	2	8	0
	Yekepa	241	144	97	66	0	0	0	0
	Loguatu	230	92	138	222	0	0	79	0
<b>Total</b>		<b>5,674</b>	<b>2723</b>	<b>2951</b>	<b>5301</b>	<b>3</b>	<b>67</b>	<b>98</b>	<b>0</b>

*Note: Yellow book (YB) issue for both arrival and departure; Vaccination coverage for both arrival and departure*



# PUBLIC HEALTH MEASURES



# NATIONAL LEVEL

- Planned EPI review meeting slated for February 3-8, 2025, in Ganta to discuss issues and VPDs surveillance for 2024 and outline plans for 2025
- Ongoing IDSR data harmonization across the 15 counties supported by US CDC under the CoAg project
- Ongoing IDSR Data Collection training at the Corina Hotel in Monrovia supported by PLAN International and The Task Force on Global Health with funding provided by Global Fund C19 project
- Ongoing IMS meeting for coordination and resource mobilization
- Produced and disseminated weekly Epi bulletins and weekly situation reports
  - Lassa fever and Mpox outbreaks
  - Ongoing classification of suspected cases of (Lassa fever, Mpox, AFP, and Measles)



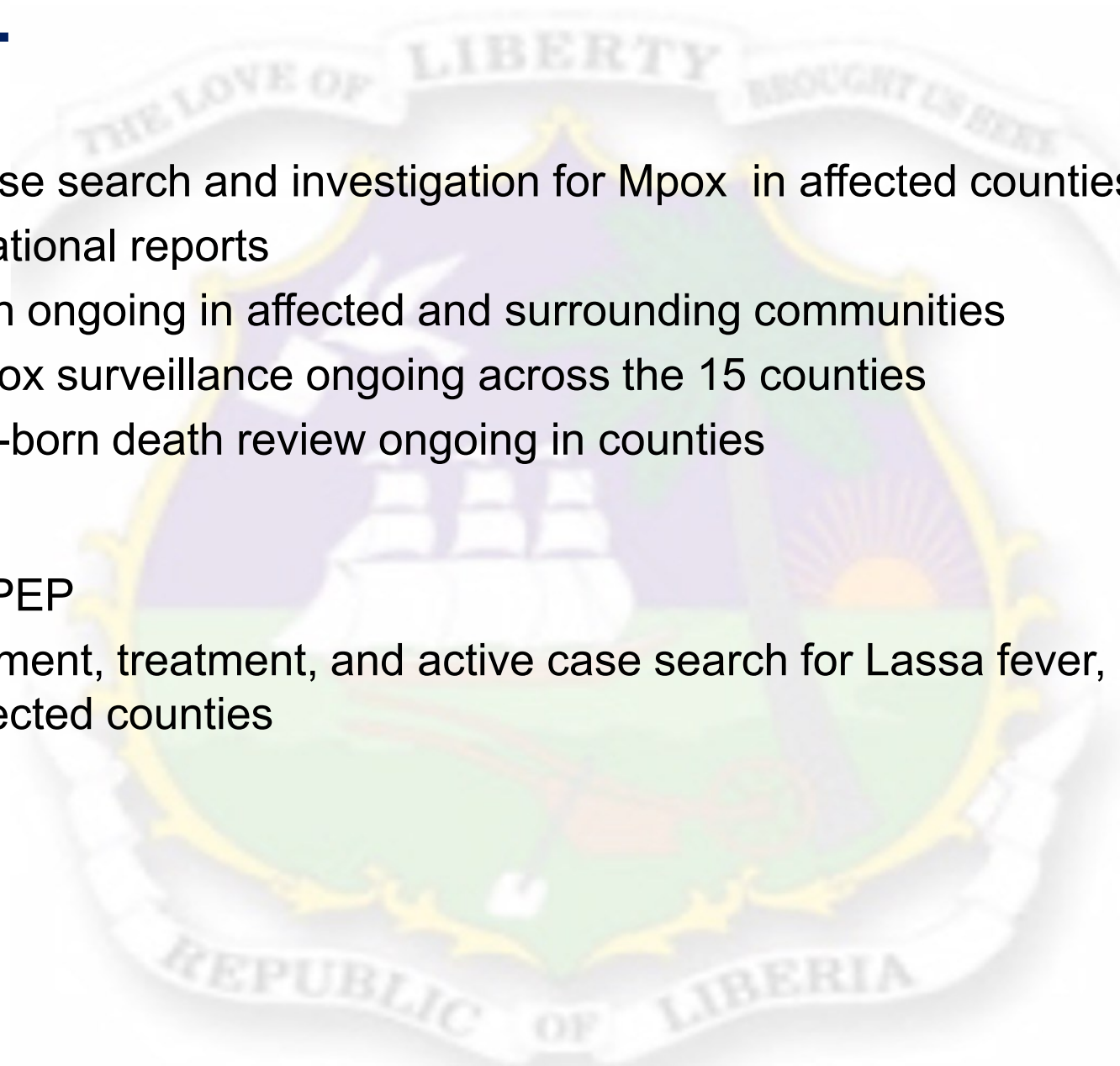
# COUNTY LEVEL

## ➤ Surveillance

- Ongoing active case search and investigation for Mpox in affected counties
- Production of situational reports
- Active case search ongoing in affected and surrounding communities
- Awareness on Mpox surveillance ongoing across the 15 counties
- Maternal and new-born death review ongoing in counties

## ➤ Case Management

- Administration of PEP
- Isolation, management, treatment, and active case search for Lassa fever, and Measles cases are ongoing in affected counties



**For comments or questions, please contact**

**Ralph W. Jetoh, M.D.**

Director

Infectious Disease and Epidemiology Division

National Public Health Institute of Liberia

Republic of Liberia

Email: [ralphica2000@gmail.com](mailto:ralphica2000@gmail.com)

Phone: +231.77.737.2655

Website: [www.nphil.gov.lr](http://www.nphil.gov.lr)