



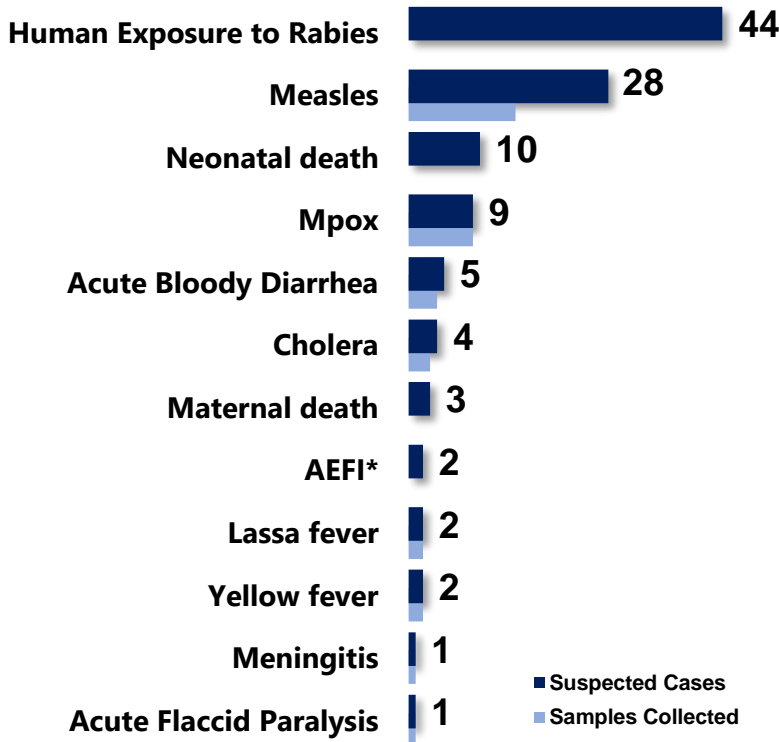
# Liberia IDSR Epidemiology Bulletin

2024 Epi-week 51 (December 16 – 22, 2024)

Country Population: 5,406,374 || Volume 21 Issue 51 || December 16 – 22, 2024 | Data Source: CSOs from 15 Counties and Laboratory

## Highlights

Figure 1. Public Health Events Reported



\*Adverse Event Following Immunization

## Keynotes and Events of Public Health Significance

- ◆ A total of 111 events of public health importance, including 13 deaths reported
- ◆ Completeness and Timeliness of health facility reports were 99% and 99%, respectively
- ◆ Ongoing Lassa fever outbreak in three counties
- ◆ Ongoing Measles outbreak in one county
- ◆ Ongoing circulating vaccine-derived Poliovirus type 2 outbreak
- ◆ Ongoing Mpox outbreak in twelve counties

## Reporting Coverage

Table 1. Health Facility Weekly IDSR Reporting Coverage, Liberia, Epi-week 51, 2024

County	Expected Reports from Health Facility	Reports Received	Received on Time	Completeness (%)	Timeliness (%)
Bomi	29	29	29	100	100
Bong	64	64	64	100	100
Gbarpolu	18	18	18	100	100
Grand Bassa	38	38	38	100	100
Grand Cape Mount	36	36	36	100	100
Grand Gedeh	24	24	24	100	100
Grand Kru	25	25	25	100	100
Lofa	61	61	61	100	100
Margibi	64	63	63	99	100
Maryland	28	28	28	100	100
Montserrado	371	371	367	100	99
Nimba	102	102	102	100	100
Rivercess	21	21	21	100	100
River Gee	21	21	21	100	100
Sinoe	41	41	41	100	100
<b>Liberia</b>	<b>943</b>	<b>942</b>	<b>938</b>	<b>99</b>	<b>99</b>

942(99%) Health facilities reported IDSR data

98(100%) Health districts reported IDSR data

938(99%) Health facilities reported timely IDSR data

Legend: ≥80 <80

◆ The national target for weekly IDSR reporting is 80%. All counties reported on time. Health facility timeliness is monitored at the health district level.

## Vaccine-Preventable Diseases

### Measles

Twenty-eight (28) suspected cases were reported from Nimba (22), Sinoe (3), Montserrado (2), and River Gee (1) Counties

- Fifteen (15) specimens were collected, and pending testing at NRL
- Thirty-six percent (10/28) of the suspected cases were vaccinated for measles (see Table 2)

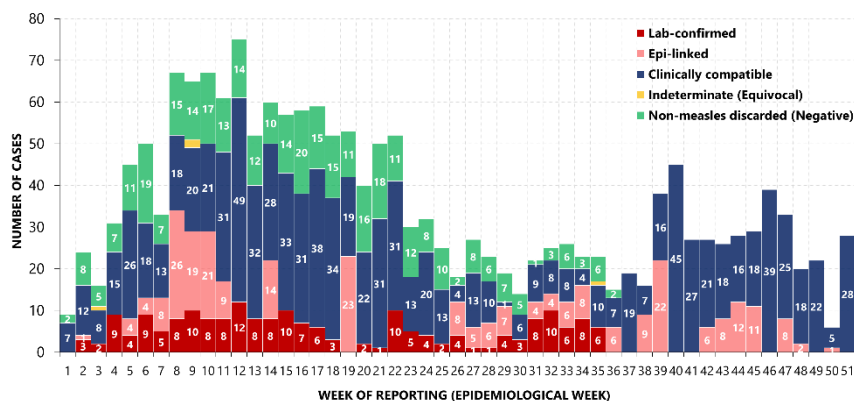
Cumulatively, 1,801 suspected cases have been reported since Epi-week 1 (see Table 3)

- Of the total reported, 1444 confirmed cases
  - 54% were reported to have previously been vaccinated
  - 35% were unvaccinated
  - 11% had unknown vaccination status
- Fifty-one percent (741/1444) of the confirmed cases are below 5 years
- Proportion of suspected cases with sample collected 46% (827/1801)
- Proportion of suspected cases with sample tested 67% (552/827) [negative – 353, positive – 195, indeterminate-4]
- Proportion of negative Measles cases tested for Rubella 90% (320/353) [negative – 292, positive – 28]

Liberia’s annualized non-measles febrile rash illness rate now stands at **6.7 per 100,000**. Montserrado and Margibi Counties are below the target (see Table 3)

**Table 2. Distribution and Vaccination Status of Measles Cases, Liberia, Epi-week 51, 2024**

County	Reported		Number of Doses Received		
	cases	Vaccinated	One Dose	Two Doses	Doses Not Indicated
Montserrado	2	1	0	1	0
Nimba	22	8	5	0	3
River Gee	1	1	0	0	1
Sinoe	3	0	0	0	0
<b>Total</b>	<b>28</b>	<b>10</b>	<b>5</b>	<b>1</b>	<b>4</b>

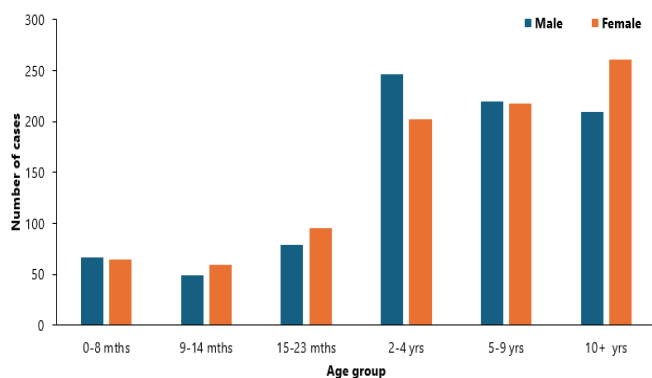


**Figure 2. Distribution of Measles Cases by Reporting Week and Epi-classification, Liberia, Epi-week 1 – 51, 2024**

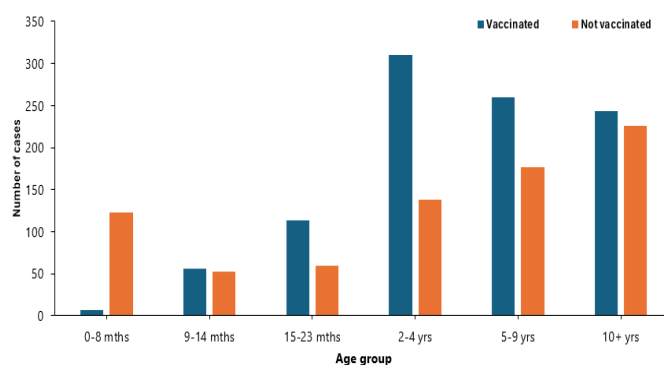
**Table 3. Classification of measles, reporting rate, and annualized non-measles rash illness rate per 100,000 population by County, Liberia, Epi-week 1 – 51, 2024**

Reporting County	Epi-classification					Cumulative	Annualized Non Measles Febrile Rash Illness Rate
	Lab confirmed	Epi-linked	Clinically compatible	Indeterminate (Equivocal)	Discarded (Negative)		
Bomi	4	0	14	0	9	27	6.6
Bong	2	0	27	0	9	38	1.9
Gbarpolu	7	0	20	1	26	54	27.3
Grand Bassa	3	0	42	0	16	61	5.4
Grand Cape Mount	7	0	22	0	28	57	15.6
Grand Gedeh	37	28	88	0	39	192	17.6
Grand Kru	31	35	55	0	44	165	39.2
Lofa	5	0	35	0	15	55	4.1
Margibi	0	0	12	0	4	16	1.3
Maryland	21	13	171	0	8	213	4.7
Montserrado	4	0	50	0	21	75	1.1
Nimba	36	172	342	1	27	578	4.3
River Gee	23	13	69	1	39	145	31.4
Rivercess	1	0	4	0	6	11	6.4
Sinoe	14	1	36	1	62	114	40.9
<b>Liberia</b>	<b>195</b>	<b>262</b>	<b>987</b>	<b>4</b>	<b>353</b>	<b>1801</b>	<b>6.7</b>

Target Achieved >=2 Below Target <2



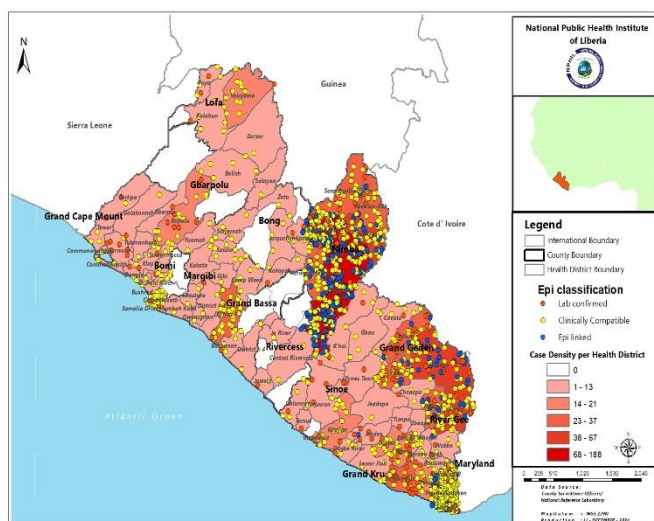
**Figure 3. Suspected Measles Cases by Age-group and Sex, Liberia, Epi-week 1 – 51, 2024**



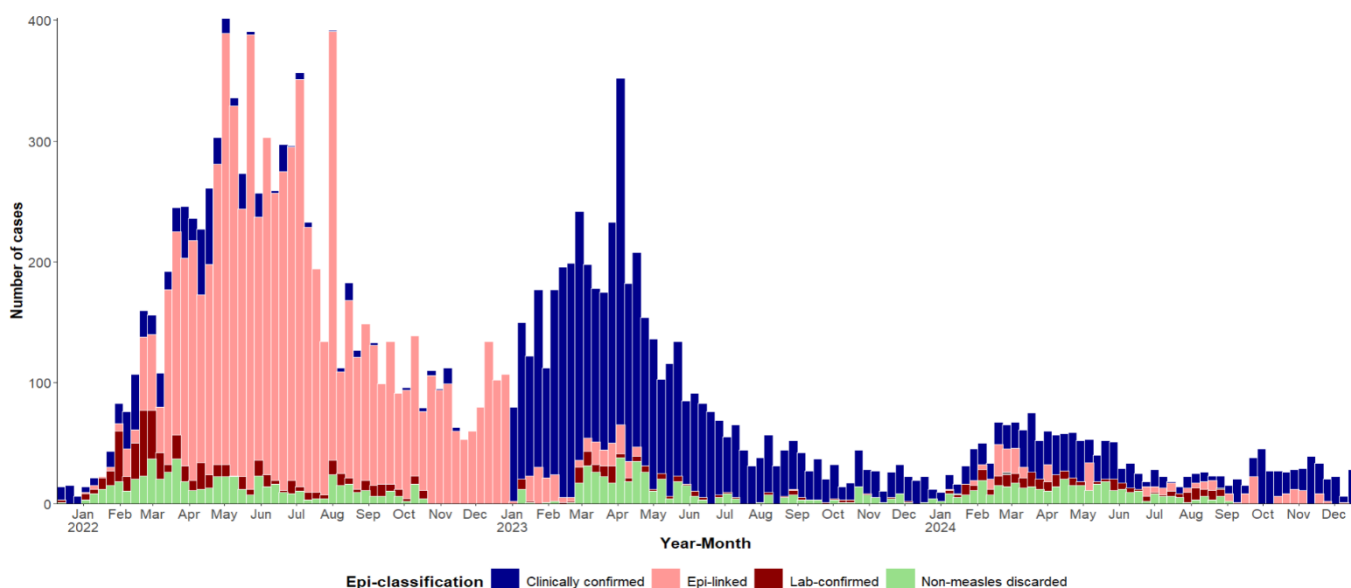
**Figure 4. Vaccination status of Suspected Measles Cases by Age Group, Liberia, Epi-week 1 – 51, 2024**

**Table 4. Measles Outbreak by County and Case Status, Liberia, December 13, 2021 – December 22, 2024**

County	Total Cases	Active	Recovery	Deaths	No. of Districts
Montserrado	5,373	0	5,304	69	0/7
Nimba	1520	22	1516	4	5/11
Grand Bassa	950	0	917	7	1/8
Margibi	803	0	802	1	0/4
Bong	578	0	575	3	0/9
Maryland	1,320	0	1320	0	0/6
Lofa	292	0	292	0	0/6
Grand Kru	1,100	0	1,098	2	0/5
Grand Cape Mount	187	0	184	3	0/5
Bomi	148	0	143	5	0/4
Rivercess	84	0	83	1	0/6
Gbarpolu	64	0	64	0	0/5
Grand Gedeh	604	0	604	0	0/6
River Gee	134	0	134	0	0/6
Sinoe	247	0	247	0	0/10
<b>Total</b>	<b>13,393</b>	<b>22</b>	<b>13,298</b>	<b>95</b>	<b>5/98</b>



**Figure 5. Measles outbreak by County and Case Status, Liberia, December 13, 2021 – December 22, 2024**



**Figure 6: Epi-curve of Measles Cases by monthly classification, Liberia, December 13, 2021 - December 22, 2024**

**PUBLIC HEALTH ACTION**

**I. Coordination**

- The response has been led by the County Health Teams with technical support from the National Public Health Institute of Liberia (NPHIL), the Ministry of Health (MoH), and partners.
- IMS meetings are being held for coordination and mobilization of resources in Nimba County.

**II. Epidemiological Surveillance**

- Active case search ongoing in affected communities

**III. Case management**

- Case management ongoing in Nimba County

**IV. Immunization**

- Routine immunization ongoing across the country

**V. Laboratory**

- The National Public Health Reference Laboratory (NPHRL) continues testing of Measles samples

**VI. Risk Communication & Community Engagement**

- Awareness and health education on the upcoming measles Supplemental Immunization Activities (SIA) ongoing nationwide.

## Acute Flaccid Paralysis (AFP)

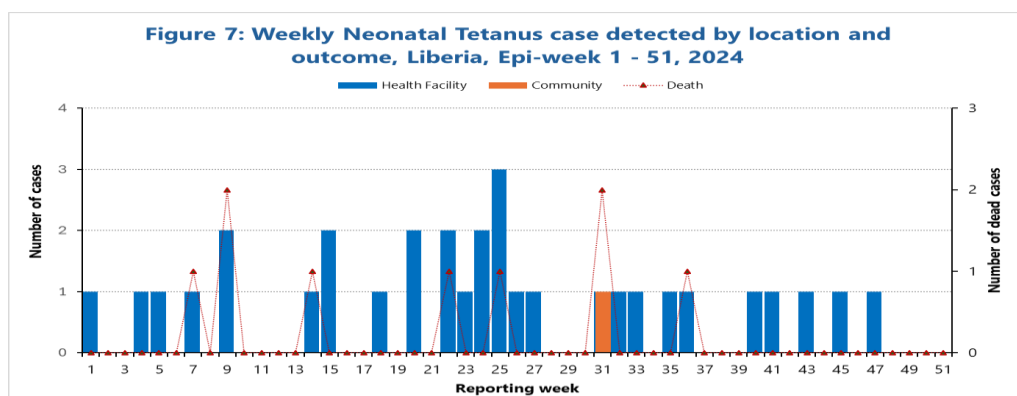
- ☒ One case was reported from Bong County
  - Specimens were collected and shipped
- ☒ Cumulatively, 104 cases have been reported since Epi-week 1. One (1) cVDPV2<sup>1</sup>, 1 Poliovirus-2, 85 negative, 13 NPENT, and 4 AFP specimens pending testing at the laboratory
- ☒ As of week 51, the annualized non-polio AFP rate is at **4.4 per 100,000** populations under 15 years of age.

**Table 5. Non-Polio AFP Rate 3/100,000 <15 years by County, Liberia, Epi-week 1 – 51, 2024**

County	< 15 years pop	# of AFP Cases Reported	# of Cases with Lab Result	Non-Polio AFP Rate	# of cases <14 days specimen collected	% of stool <14days	# of NPENTs	% of NPENT
Bomi	62196	5	5	8.2	5	100%	0	0%
Bong	215425	3	2	1.4	3	100%	0	0%
Gbarpolu	43630	4	4	9.3	4	100%	0	0%
Grand Bassa	134743	3	3	2.3	3	100%	0	0%
Grand Cape Mount	82471	8	7	9.9	8	100%	1	13%
Grand Gedeh	101412	7	7	7.0	7	100%	1	14%
Grand Kru	51467	3	3	5.9	3	100%	1	33%
Lofa	168626	10	10	6.0	10	100%	1	10%
Margibi	140931	1	1	0.7	1	100%	0	0%
Maryland	78808	3	3	3.9	3	100%	0	0%
Montserrado	898124	25	24	2.8	25	100%	4	16%
Nimba	285705	24	23	8.6	24	100%	5	21%
Rivercess	42729	2	2	4.8	2	100%	0	0%
River Gee	57047	1	1	1.8	1	100%	0	0%
Sinoe	69556	5	5	7.3	5	100%	0	0%
<b>Liberia</b>	<b>2432868</b>	<b>104</b>	<b>100</b>	<b>4.4</b>	<b>104</b>	<b>100%</b>	<b>13</b>	<b>13%</b>
<b>Non-Polio AFP Rate</b>	<3	<b>Stool adequacy</b>		<80%	<b>Non-Polio Enterovirus</b>	<10%	<b>Silent</b>	
	≥3			≥80%		≥10%		

## Neonatal Tetanus

- ☒ Zero clinically confirmed cases reported
- ☒ Cumulatively, 33 cases have been reported, including 10 deaths since Epi-week 1. Case Fatality Rate is 30% and community detection is at 3%.



## Influenza-Like Illnesses

### Coronavirus Disease (COVID-19)

- ☒ Zero suspected cases were reported
- ☒ Cumulatively, three (3) cases have been reported since Epi-week 1, with two positive and one negative

### Influenza

- ☒ Zero cases were reported
- ☒ Cumulatively, 118 suspected cases reported since Epi-week 1.
  - One hundred eighteen (118) specimens were collected: 110 tested negative, 4 specimens were discarded, and 4 positive

<sup>1</sup> circulating Vaccine-Derived Poliovirus type 2

## Viral Haemorrhagic Fever

### Lassa fever

- ☞ Two (2) suspected cases were reported from Bong and Grand Bassa Counties
  - Specimens were collected, 1 tested positive and 1 negative
- ☞ Cumulatively, 242 suspected cases have been reported since Epi-week 1.
  - Proportion of suspected cases with sample collected (239/242) 99%. Seven of the collected samples were discarded
  - Proportion of suspected cases with sample tested (226/232) 97%
    - Forty-one (41) positive, including 12 deaths, 2 indeterminate, and 183 negative
  - Case Fatality Rate: (12/41) 29%
  - Nimba County accounts for 37% of the total confirmed case

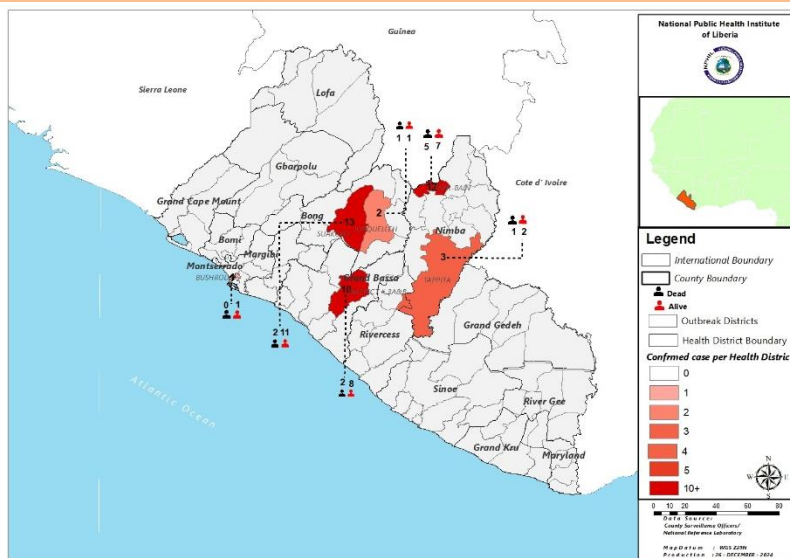
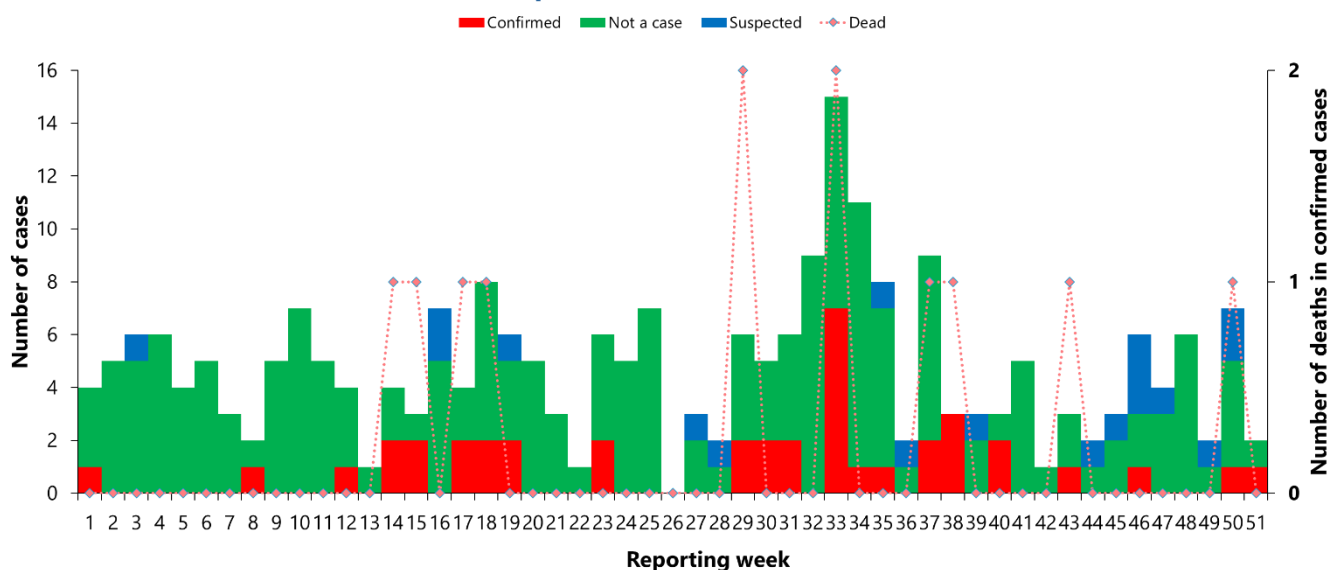


Figure 8. Geospatial distribution of confirmed Lassa fever by Health District, Liberia, Epi-week 1 – 51, 2024

Figure 9: Weekly distribution of Lassa fever cases by Epi-classification, Liberia, Epi-week 1 – 51, 2024



### Outbreak Section (January 6, 2022 – December 27, 2024)

- ☞ One new confirmed case reported from Grand Bassa County (District #3A&B)
- ☞ Six (6) contacts, including 2 HCWs line listed and undergoing 21 days follow up
- ☞ Total of 13 contacts, including 7 HCWs undergoing 21 days follow up
- ☞ A total of 179 confirmed cases, including 56 deaths reported
- ☞ Cumulative Case Fatality Rate (CFR): 31% (56/179)
- ☞ Three (3) counties are currently in outbreak (1 in countdown)

### PUBLIC HEALTH RESPONSE

#### I. Coordination

- The National Public Health Institute of Liberia (NPHIL) and the Ministry of Health (MoH) are providing technical support to the affected counties with support from partners

#### II. Epidemiological Surveillance

- Active case search ongoing in affected communities
- Six (6) contacts, including 2 HCWs line listed and undergoing 21 days follow up

- Total of 13 contacts, including 7 HCWs undergoing 21 days follow up
- Three (3) counties (Grand Bassa, Bong, and Nimba) are currently in outbreak, with Nimba in countdown phase
- Weekly sit-reps developed and disseminated to stakeholders

### III. Case management

- Ribavirin distributed to affected counties
- One confirmed case is currently in isolation at LAC Hospital (Grand Bassa County)

### IV. Risk Communication and Community Engagement

- Risk communication and community engagement ongoing in affected communities

### V. Dead Body Management

- A total of 56 deaths were recorded among confirmed cases
- Safe and dignified burial conducted for the deceased cases

### VI. Laboratory

- The National Public Health Reference Laboratory continues testing of Lassa fever samples
- A total of 179 Lassa fever cases have been confirmed since this outbreak

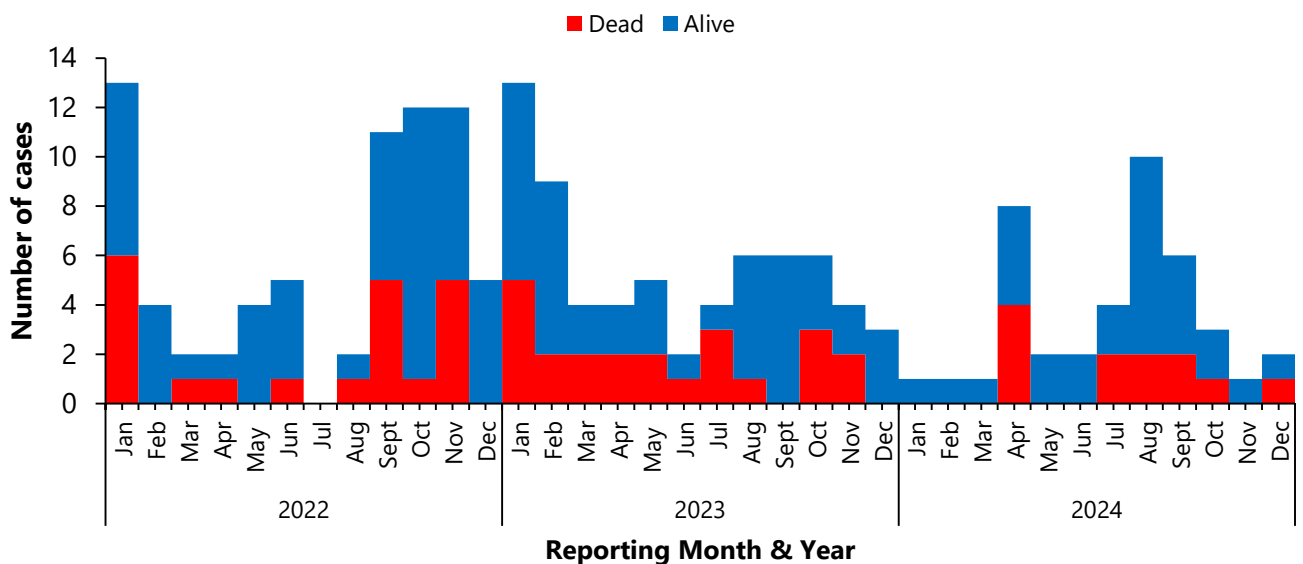
**Table 6. Summary of Lassa fever Outbreak, Liberia, January 6, 2022 – December 27, 2024**

County	Outbreak Districts	Outbreak Start Date	Total suspected	Total confirmed	HCWs confirmed	Total Deaths	Deaths in HCWs	CFR %	Total Contacts	# HCW contacts	Contacts became cases	Contacts under follow up	Contacts completed	Days in countdown	Outbreak Status
Montserrado	Bushrod	13-Feb-23	17	1	0	0	0	0%	29	21	0	0	29	Completed	Ended
	Central Monrovia	27-Nov-23	1	2	0	1	0	50%	49	0	0	0	49	Completed	Ended
	Central Monrovia	3-Mar-23	38	2	0	1	0	50%	28	27	0	0	28	Completed	Ended
	Bushrod	30-Apr-24	2	1	0	0	0	0%	14	6	0	0	14	Completed	Ended
Bong	Suakoko	21-Apr-23	192	54	18	13	2	24%	496	114	6	0	417	Completed	Ended
	Jorquelleh	15-Oct-23	14	6	3	1	1	17%	121	86	3	0	169	Completed	Ended
	Kokayah	6-Jun-24	3	1	0	0	0	0%	8	0	0	0	8	Completed	Ended
	Suakoko	29-Jul-24	11	5	1	0	0	0%	37	14	0	0	37	Completed	Ended
	Suakoko	23-Feb-24	31	3	0	0	0	0%	29	14	0	0	29	Completed	Ended
	Salala	8-Mar-24	2	2	0	1	0	50%	21	0	0	0	21	Completed	Ended
	Jorquelleh	11-Apr-24	3	2	0	1	0	0%	41	30	0	0	41	Completed	Ended
	Suakoko	19-Nov-24	3	2	0	1	0	50%	8	5	0	7	8	Active	Ongoing
Grand Bassa	District 3A&B	21-Aug-23	87	44	0	10	0	23%	177	40	40	0	159	Completed	Ended
	Buchanan	11-Aug-23	2	1	0	1	0	100%	4	2	0	0	4	Completed	Ended
	District 3A&B	30-Apr-24	7	3	0	1	0	33%	12	3	0	0	12	Completed	Ended
	District 3A&B	3-Sep-24	7	6	0	1	0	17%	27	10	0	0	27	Completed	Ended
	District 3A&B	20-Dec-24	1	1	0	1	0	0%	6	4	0	6	0	Active	Ongoing
Nimba	Saclepea-Mah	21-Nov-23	4	2	0	1	0	50%	5	0	0	0	5	Completed	Ended
	Sanniquelle-Mah	6-Feb-23	43	15	0	9	0	60%	43	35	8	0	43	Completed	Ended
	Tappita	29-Jul-24	5	2	0	1	0	50%	27	24	0	0	27	Completed	Ended
	Tappita	20-Nov-23	12	5	0	3	0	60%	88	39	4	0	77	Completed	Ended
	Bain-Garr	1-Jun-23	25	6	0	3	0	50%	61	25	0	0	31	Completed	Ended
	Bain-Garr	15-Apr-24	5	2	0	1	0	50%	25	7	0	0	25	Completed	Ended
	Bain-Garr	18-Jul-24	20	10	0	5	0	50%	173	98	1	0	173	39	Countdown
River Gee	Putupo	25-Nov-22	2	1	0	1	0	100%	14	0	0	0	14	Completed	Ended
<b>Total</b>			<b>537</b>	<b>179</b>	<b>22</b>	<b>56</b>	<b>3</b>	<b>31%</b>	<b>1543</b>	<b>604</b>	<b>62</b>	<b>13</b>	<b>1447</b>		

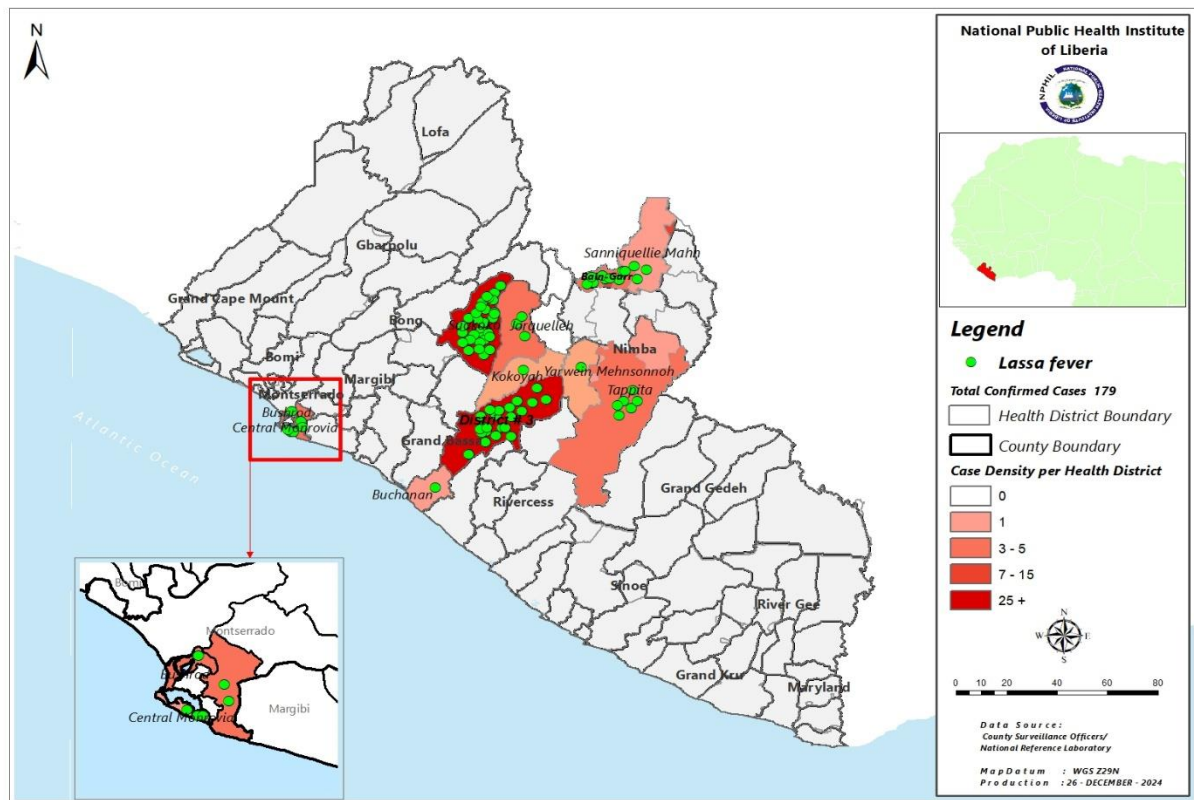
**Legend:**  Outbreaks in countdown stage in reporting districts

Active/ ongoing outbreaks not in countdown stage with active response interventions in reporting districts

**Figure 10: Epi-curve of confirmed Lassa fever Cases by Outcome, Liberia, January 6, 2022 - December 27, 2024**







**Figure 11. Geospatial distribution of outbreak district with number of confirmed Lassa fever cases, Liberia, January 6, 2022 - December 27, 2024**

### Yellow Fever

- ☞ Two (2) suspected cases were reported from Grand Cape Mount and Grand Kru Counties
  - Specimens were collected and pending testing
- ☞ Cumulatively, 101 cases have been reported since Epi-week 1.
  - Proportion of suspected cases with samples collected (98/101) 97%; however, 1 was rejected
  - Proportion of suspected cases with samples tested (93/98) 95% [presumptive positive – 4, negative – 88, indeterminate – 1]

### Ebola Virus Disease / Marburg Virus Disease

- ☞ Zero suspected cases were reported
- ☞ Cumulatively, 5 suspected cases were reported

### Dengue

- ☞ Zero suspected cases were reported
- ☞ Cumulatively, 7 suspected cases were reported

## Diarrheal Diseases

### Acute Bloody Diarrhoea (Shigellosis)

- ☞ Five (5) cases were reported from Lofa (2), Margibi (1), Montserrado (1), and Sinoe (1), Counties
  - Four specimens were collected and pending testing
- ☞ Cumulatively, 412 cases have been reported since Epi-week 1.
  - 235 specimens were collected, with 182 received at the Lab. Of the 182 specimens, 142 tested negative, 24 confirmed (*S. flexneri*-4, *S. sonnei*-9, *others*-11), 7 rejected, and 9 pending testing

### Severe Acute Watery Diarrhoea (Cholera)

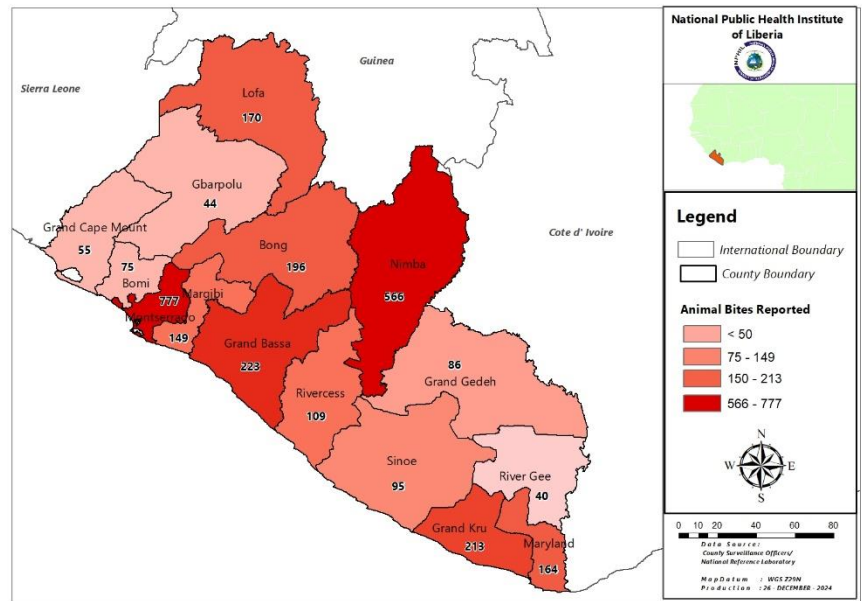
- ☞ Four (4) suspected cases were reported from Lofa (3) and Maryland (1) Counties
  - Three specimens were collected, and pending testing
- ☞ Cumulatively, 331 cases have been reported since Epi-week 1.
  - 168 specimens collected, 124 received at the laboratory
  - 101 tested negative, 12 rejected, and 11 pending testing.

## Other Reportable Diseases

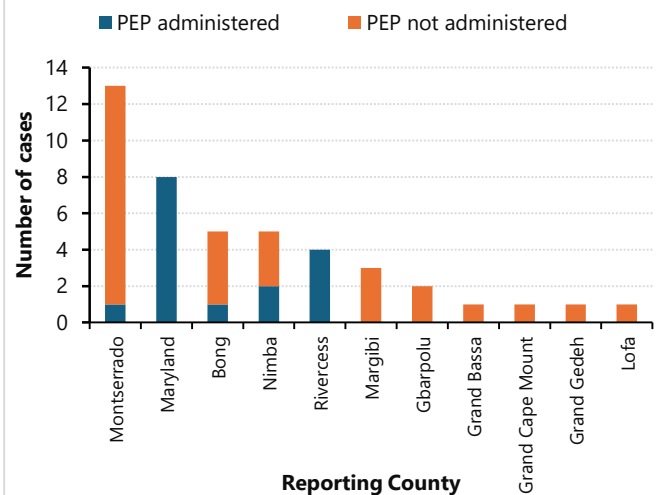
### Animal bite (Human Exposure to Rabies)

- ☞ Forty-four (44) dog bite cases were reported from Montserrado (13), Maryland (8), Nimba (5), Bong (5), Rivercess (4), Margibi (3), Gbarpolu (2), Grand Bassa (1), Grand Cape Mount (1), Grand Gedeh (1), and Lofa (1) Counties
- ☞ Proportion of cases investigated is 64% (28/44)
- ☞ PEP was administered to twenty-eight (28) persons in Montserrado (12), Rivercess (4), Maryland (3), Nimba (3), Bong (2), Gbarpolu (2), Margibi (1), and Grand Bassa (1) Counties
- ☞ Cumulatively, 2,962 cases have been reported, including 7 deaths (*suspected human rabies*) since Epi-week 1.

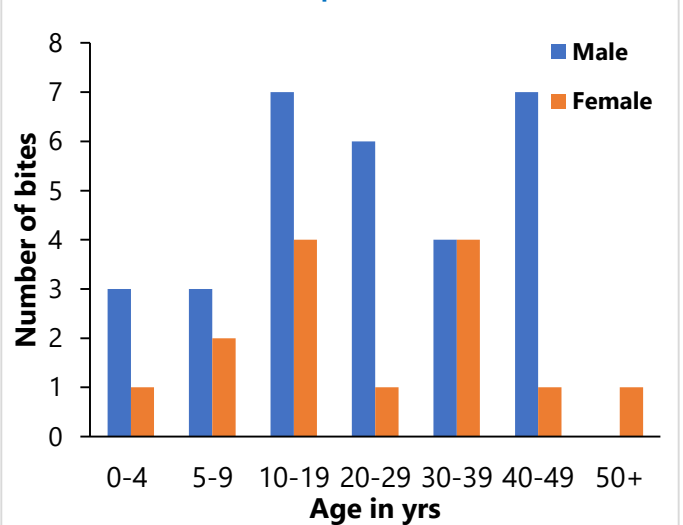
**Figure 12. Geospatial distribution of Human Exposure to Animal Bites Cases by County, Liberia, Epi-week 1 – 51, 2024**



**Figure 14. Human Exposure to Animal Bites by County & PEP Administration, Liberia Epi-week 51, 2024**



**Figure 13. Distribution of Animal Bite Cases by Sex, Liberia, Epi-week 51, 2024**



## Meningitis

- ☞ One (1) case was reported from Nimba County
  - Specimen was collected and tested negative
- ☞ Cumulatively, 22 suspected cases have been reported
  - Proportion of specimen collected (19/22) 86%, 3 specimens not collected
  - Proportion of specimens tested (19/19) 100% [17 negative, 2 positive]

## Mpox

- ☞ Nine (9) suspected cases were reported from Nimba (2), Montserrado (2), Bomi (1), Lofa (1), Rivercess (1), Margibi (1), and Maryland (1) Counties
  - Specimens were collected, and all tested negative
- ☞ Cumulatively, 407 suspected cases have been reported, 393 samples collected with 1 rejected
  - Three hundred fifty-four (354) tested: 63 positive, 287 negative and 4 indeterminate



- ☑ No new confirmed case reported
- ☑ All contacts completed follow-up

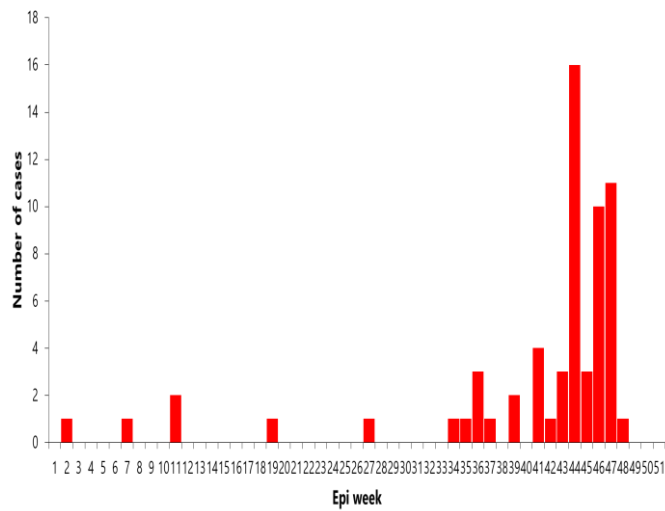


Figure 15. Weekly epi-curve of Mpox lab-confirmed cases detected in Liberia, Epi-week 1 - 51, 2024

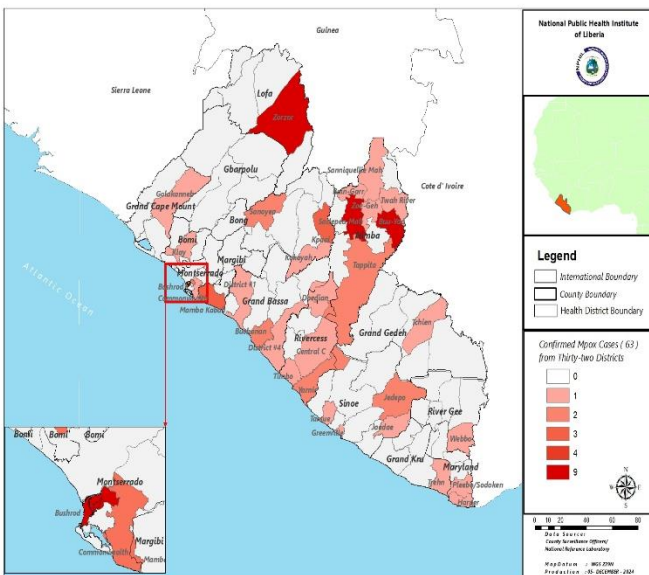


Figure 16. Distribution of Lab-confirmed Mpox cases by Health District, Liberia, January 1 – December 22, 2024

**PUBLIC HEALTH RESPONSE**

**I. Coordination**

- Conduct regular IMS meetings at national and subnational levels in affected counties to direct response efforts
- Production of regular Sitreps and dissemination

**II. Epidemiological Surveillance**

- Active media scanning and community case finding continue through EIOS platform
- Continue to follow up with response counties to obtain updates on the status of the Mpox outbreak
- All contacts completed follow-up

**III. Case management**

- Two (2) cases currently in isolation (1-Grand Bassa, 1-Sinoe) active cases

**IV. Laboratory**

- Sequencing results showed Monkeypox virus Clade IIa and Clade IIb
- The National Public Health Reference Laboratory continues the testing of Mpox samples

**V. Risk Communication & Community Engagement**

- Ongoing community engagement and awareness creation via a radio station in partnership between the RCCE team and affected County Health teams

**NEXT STEPS**

- Continue active case search in the affected communities

## Other Events of Public Health Importance

### Maternal Mortality

- ☞ Three (3) deaths were reported from Montserrado, Bong, and Gbarpolu Counties
- ☞ Primary causes of death were postpartum hemorrhage (1) and under investigation (2)
- ☞ Cumulatively, 287 deaths have been reported since Epi-week 1, of which (260) 91% were reported from health facilities and (27) 9% from communities.
  - Proportion of deaths reviewed (139/287) 48%.
- ☞ Annualized maternal mortality ratio is at **126 per 100,000 live births** (Table 8). The expected MMR based on 2019-20 Demographic Health Survey (DHS) is 742 deaths per 100,000 live births.

**Table 8. Cumulative Maternal Mortality reporting rate and Annualized Maternal Mortality per 100,000 live births by County, Liberia, Week 1 – 51, 2024**

County	Estimated Annual Live birth (4.3%)	Current week	Cumulative	% of Cumulative Maternal deaths	Annualized Maternal Mortality
Grand Bassa	12875	0	24	8.4	190
Montserrado	85821	1	140	48.8	166
Margibi	13467	0	19	6.6	144
Nimba	27301	0	38	13.2	142
Maryland	7531	0	9	3.1	122
Grand Cape Mount	7881	0	9	3.1	116
Grand Kru	4918	0	5	1.7	104
Rivercess	4083	0	4	1.4	100
Bomi	5943	0	5	1.7	86
Lofa	16113	0	13	4.5	82
Grand Gedeh	9690	0	6	2.1	63
Bong	20585	1	11	3.8	54
River Gee	5451	0	2	0.7	37
Gbarpolu	4169	1	1	0.3	24
Sinoe	6646	0	1	0.3	15
<b>Liberia</b>	<b>232474</b>	<b>3</b>	<b>287</b>	<b>100.0</b>	<b>126</b>

### Neonatal Mortality

- ☞ Ten (10) deaths were reported from Montserrado (6), Sinoe (1), Nimba (1), Maryland (1), and Grand Cape Mount (1) Counties
- ☞ Primary causes of death were birth asphyxia (6), sepsis (3), and under investigation (1)
- ☞ All deaths occurred in the health facility
- ☞ Cumulatively, 779 deaths have been reported since Epi-week 1.
  - Proportion of deaths reviewed (354/779) 45%
- ☞ Annualized neonatal mortality rate is at **4.2 per 1,000 live births** (Table 9).

**Table 9 Neonatal Mortality. Cumulative Neonatal Mortality reporting rate and Annualized per 1,000 live births by County, Liberia, Week 1 – 51, 2024**

County	Estimated Annual Live birth (4.3%)	Current Week	Cumulative	% of Cumulative Neonatal deaths	Annualized Neonatal Mortality Rate/1,000
Maryland	7347	1	88	11.3	12.2
Grand Kru	3130	0	28	3.6	9.1
Montserrado	62479	6	478	61.4	7.8
Rivercess	3865	0	14	1.8	3.7
Sinoe	5534	1	18	2.3	3.3
Gbarpolu	4507	0	13	1.7	2.9
River Gee	3610	0	10	1.3	2.8
Grand Gedeh	6770	0	14	1.8	2.1
Margibi	11345	0	21	2.7	1.9
Bong	18775	0	30	3.9	1.6
Lofa	14911	0	22	2.8	1.5
Nimba	24970	1	33	4.2	1.3
Bomi	4546	0	3	0.4	0.7
Grand Bassa	11981	0	5	0.6	0.4
Grand Cape Mount	6868	1	2	0.3	0.3
<b>Liberia</b>	<b>190636</b>	<b>10</b>	<b>779</b>	<b>100.0</b>	<b>4.2</b>

### Adverse Events Following Immunization (AEFI)/Adverse Drug Reaction (ADR)

- ☞ Two (2) events were reported from Gbarpolu, and Grand Gedeh Counties
- ☞ All reported cases were investigated and classified as non-serious. Related vaccines included Penta (2)
- ☞ Cumulatively, 1238 events were reported since Epi-week 1.

## Neglected Tropical Diseases

### Buruli Ulcer

- ☞ Zero cases were reported
- ☞ Cumulatively, seven confirmed cases have been reported since Epi-week 1.

## Border Surveillance Update

A total of 7540 travelers' were screened from eight (8) designated out of Forty-five (45) official Points of Entry, with incoming travelers accounting for 49% (3687/7540) ([Table 10](#)).

**Table 10. Cross-border activity at the POE for incoming and outgoing travelers, Liberia, Epi-week 51, 2024**

Type of Ports	Point of Entry	Weekly total	Arrival	Departure	Total travelers with YB	Yellow Book Damage	Card Replaced	Travelers Vaccinated against YF & Issued book	Alerts detected/ Verified
Airport	James S. Paynes	0	0	0	0	0	0	0	0
	Robert Int'l Airport	5441	2669	2772	5406	0	35	0	0
Seaport	Freeport of Monrovia	184	92	92	184	0	0	0	0
	Buchanan Port	196	98	98	196	0	0	0	0
Ground Crossing	Bo Water Side	624	302	322	597	0	0	4	0
	Ganta	125	47	78	27	2	2	0	0
	Yekepa	296	197	99	41	0	0	0	0
	Loguatu	674	282	392	663	0	0	0	0
<b>Total</b>		<b>7,540</b>	<b>3687</b>	<b>3853</b>	<b>7114</b>	<b>2</b>	<b>37</b>	<b>4</b>	<b>0</b>

Note: Yellow book (YB) issue for both arrival and departure; Vaccination coverage for both arrival and departure

## Public Health Measures

### National level

- ☞ Ongoing IMS meeting for coordination and resource mobilization
- ☞ Produced and disseminated situation reports (Lassa fever, Measles, etc...)
- ☞ Produced and disseminated weekly bullet
- ☞ Ongoing reclassification of suspected cases (Lassa fever, Mpox, AFP, and Measles)

### County-level

#### ☞ Surveillance

- Ongoing active case search and investigation for Mpox in affected counties
- Production of situational reports
- Active case search ongoing in affected and surrounding communities
- Awareness on Mpox surveillance ongoing across the 15 counties
- Maternal and new-born death review ongoing in counties

#### ☞ Case Management

- Administration of PEP
- Isolation, management, treatment, and active case search for Lassa fever and Measles cases ongoing in affected counties

**Appendix**

**Summary of Immediately Reportable Diseases, Conditions, and Events by County**

Counties		Bomi	Bong	Gbarpolu	Grand Bassa	Grand Cape Mount	Grand Gedeh	Grand Kru	Lofa	Margibi	Maryland	Montserado	Nimba	Rivercess	River Gee	Sinoe	Total Weekly	Cumulative Reported	Cumulative Lab-confirmed		
No. of Expected Health District		4	9	5	8	5	6	5	6	4	6	7	11	6	6	10	98				
No. of Health District Reported		4	9	5	8	5	6	5	6	4	6	7	11	6	6	10	98				
Vaccine Preventable Diseases	Acute Flaccid Paralysis (Suspected Polio)	A	0	1	0	0	0	0	0	0	0	0	0	0	0	0	0	1	104	2	
		D	0	0	0	0	0	0	0	0	0	0	0	0	0	0	0	0	0	0	0
	Measles	A	0	0	0	0	0	0	0	0	0	0	2	22	0	1	3	28	1801	195	
		D	0	0	0	0	0	0	0	0	0	0	0	0	0	0	0	0	0	0	0
	Neonatal Tetanus	A	0	0	0	0	0	0	0	0	0	0	0	0	0	0	0	0	0	23	0
		D	0	0	0	0	0	0	0	0	0	0	0	0	0	0	0	0	0	10	0
	Yellow fever	A	0	0	0	0	1	0	1	0	0	0	0	0	0	0	0	2	100	3	
		D	0	0	0	0	0	0	0	0	0	0	0	0	0	0	0	0	1	1	
Viral Hemorrhagic Fever	Dengue fever	A	0	0	0	0	0	0	0	0	0	0	0	0	0	0	0	0	7	0	
		D	0	0	0	0	0	0	0	0	0	0	0	0	0	0	0	0	0	0	
	Ebola Virus Disease / Marburg Virus Disease	A	0	0	0	0	0	0	0	0	0	0	0	0	0	0	0	0	5	0	
		D	0	0	0	0	0	0	0	0	0	0	0	0	0	0	0	0	0	0	
	Lassa fever	A	0	1	0	1	0	0	0	0	0	0	0	0	0	0	0	2	207	29	
		D	0	0	0	0	0	0	0	0	0	0	0	0	0	0	0	0	33	12	
Influenza-Like Illnesses	COVID-19	A	0	0	0	0	0	0	0	0	0	0	0	0	0	0	0	0	3	1	
		D	0	0	0	0	0	0	0	0	0	0	0	0	0	0	0	0	0	0	
	Influenza	A	0	0	0	0	0	0	0	0	0	0	0	0	0	0	0	0	118	4	
		D	0	0	0	0	0	0	0	0	0	0	0	0	0	0	0	0	0	0	
Diarrheal Diseases	Acute Bloody Diarrhoea (Shigellosis)	A	0	0	0	0	0	0	2	1	0	1	0	0	0	1	5	412	24		
		D	0	0	0	0	0	0	0	0	0	0	0	0	0	0	0	0	0		
	Severe Acute Watery Diarrhoea (Cholera)	A	0	0	0	0	0	0	3	0	1	0	0	0	0	0	4	331	0		
		D	0	0	0	0	0	0	0	0	0	0	0	0	0	0	0	0	0		
Events of Public Health Importance	Maternal Mortality	D	0	1	1	0	0	0	0	0	0	1	0	0	0	0	3	287			
	Neonatal Mortality	D	0	0	0	0	1	0	0	0	1	6	1	0	0	1	10	779			
	Adverse Events Following Immunization (AEFI)	A	0	0	1	0	0	1	0	0	0	0	0	0	0	0	2	1238	0		
		D	0	0	0	0	0	0	0	0	0	0	0	0	0	0	0	0	0		
	Unexplained Cluster of Health Events/Disease	A	0	0	0	0	0	0	0	0	0	0	0	0	0	0	0	0	0		
		D	0	0	0	0	0	0	0	0	0	0	0	0	0	0	0	0	0		
Other Reportable Diseases	Mpox	A	1	0	0	0	0	0	1	1	1	2	2	1	0	0	9	407	63		
		D	0	0	0	0	0	0	0	0	0	0	0	0	0	0	0	0			
	Tuberculosis	A	0	0	0	0	0	0	0	0	0	0	0	0	0	0	0	0	0		
		D	0	0	0	0	0	0	0	0	0	0	0	0	0	0	0	0			
	Human Exposure to Rabies (Suspected Human Rabies)	A	0	5	2	1	1	1	0	1	3	8	13	5	4	0	44	2955	0		
		D	0	0	0	0	0	0	0	0	0	0	0	0	0	0	0	7	0		
	Meningitis	A	0	0	0	0	0	0	0	0	0	0	1	0	0	0	1	21	2		
		D	0	0	0	0	0	0	0	0	0	0	0	0	0	0	0	0			
	Unexplained Cluster of deaths	A	0	0	0	0	0	0	0	0	0	0	0	0	0	0	0	0	0		
		D	0	0	0	0	0	0	0	0	0	0	0	0	0	0	0	0			
Neglected Tropical Diseases	Buruli Ulcer	A	0	0	0	0	0	0	0	0	0	0	0	0	0	0	0	125	7		
		D	0	0	0	0	0	0	0	0	0	0	0	0	0	0	0	0			
	Yaws	A	0	0	0	0	0	0	0	0	0	0	0	0	0	0	0	0	0		
		D	0	0	0	0	0	0	0	0	0	0	0	0	0	0	0	0			
<b>TOTAL</b>		<b>1</b>	<b>8</b>	<b>4</b>	<b>2</b>	<b>3</b>	<b>2</b>	<b>1</b>	<b>7</b>	<b>5</b>	<b>11</b>	<b>25</b>	<b>31</b>	<b>5</b>	<b>1</b>	<b>5</b>	<b>111</b>	<b>8974</b>	<b>343</b>		

D = Dead A = Alive

- ☞ **Completeness** refers to the proportion of expected weekly IDSR reports received (target:  $\geq 80\%$ )
- ☞ **Timeliness** refers to the proportion of expected weekly IDSR reports received by the next level on time (target:  $\geq 80\%$ ). The time requirement for weekly IDSR reports:
  - Health facility - required on or before 5:00 pm every Saturday to the district level
  - Health district - required on or before 5:00 pm every Sunday to the county level
  - County - required on or before 5:00 pm every Monday to the national level
- ☞ **Non-polio AFP rate** is the proportion of non-polio AFP cases per 100,000 among the estimated population under 15 years of age in 2024 (annual target:  $\geq 2/100,000$ )
- ☞ **Non-measles febrile rash illness rate** refers to the proportion of Negative measles cases per 100,000 population
- ☞ **Annualized maternal mortality rate** refers to the maternal mortality rate of a given period of less than one year, and it is the number of maternal deaths per 100,000 live births
- ☞ **Annualized neonatal mortality rate** refers to the neonatal mortality ratio of a given period of less than one year, and it is the number of neonatal deaths per 1,000 live births
- ☞ **Epi-linked** refers to any suspected case that has not had a specimen taken for serologic confirmation but is linked to a laboratory-confirmed case
- ☞ **Confirmed case** refers to a case whose specimen has tested positive or reactive upon laboratory testing or has been classified as confirmed by either epidemiologic linkage with a confirmed case or clinical compatibility with the disease or condition

Epidemiological bulletin published with support from WHO and CDC

### For comments or questions, please contact

Ralph W. Jetoh, MD  
**Director**  
 Infectious Disease and Epidemiology Division  
 National Public Health Institute of Liberia  
 Republic of Liberia  
 Email: [ralphica2000@gmail.com](mailto:ralphica2000@gmail.com)  
 Phone: +231.77.737.2655/ +231.88.652.6388  
 Website: [www.nphil.gov.lr](http://www.nphil.gov.lr)

## National Public Health Institute of Liberia (NPHIL)

### MISSION

To prevent and control public health threats by promoting healthy outcomes and serving as a source of knowledge

### VISION

A centre of excellence to create health outcomes for Liberians through a strong preventive health system and expertise

## EDITORIAL TEAM

### DIDE / NPHIL

A. N. Mianah  
 J. S. Kokro  
 M.G. Jeuronlon  
 E. Dwalu  
 A.B. Corvah  
 S. K. Zayzay  
 T. L. Hall  
 S. L. Flomo  
 M. S. Quiah  
 J. O. Abel  
 P. J. Thomas  
 H. M. Sherman  
 M.D. Vaye  
 N. K. Dovillie  
 A. Coker  
 S. Nuwolo  
 M. Gbeyeah  
 E. Junius  
 H. Howard-Bridges

**Ministry of Health**  
**WHO Liberia Office**  
**US CDC Liberia Office**  
**Africa CDC-Liberia Office**

### Data sources

Data and information is provided by the fifteen County Surveillance Officers and National Public Health Reference Laboratory via regular weekly reports, telephone calls and email exchanges. Situations are evolving and dynamic therefore numbers stated are subject to change.