



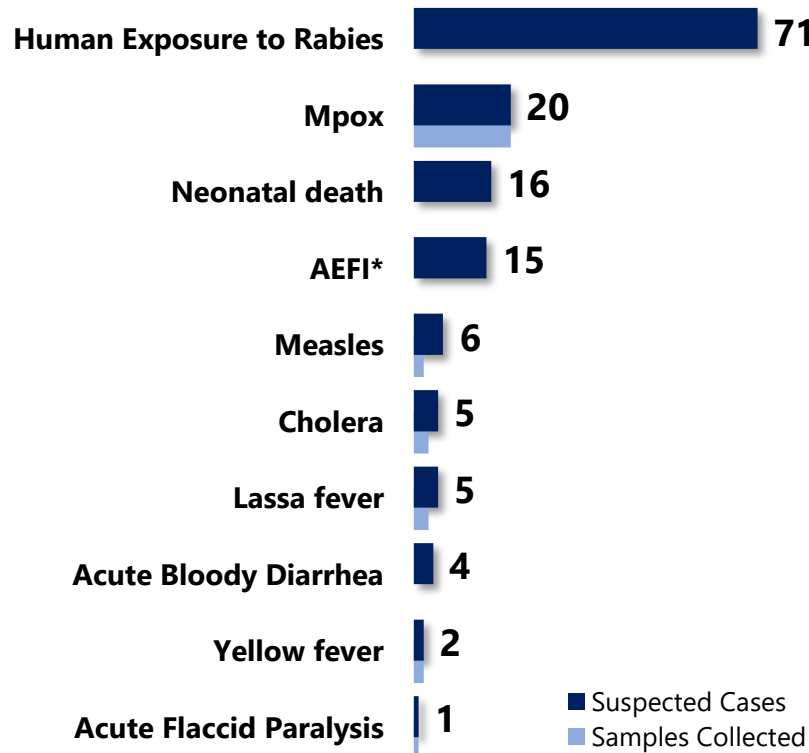
Liberia IDSR Epidemiology Bulletin

2024 Epi-week 50 (December 9 – 15, 2024)

Country Population: 5,406,374 || Volume 21 Issue 50 || December 9 – 15, 2024 || Data Source: CSOs from 15 Counties and Laboratory

Highlights

Figure 1. Public Health Events Reported



*Adverse Event Following Immunization

Keynotes and Events of Public Health Significance

- ◆ A total of 145 events of public health importance, including 20 deaths reported
- ◆ Completeness and Timeliness of health facility reports were 99% and 99%, respectively
- ◆ Ongoing Lassa fever outbreak in two counties
- ◆ Ongoing Measles outbreak in one county
- ◆ Ongoing circulating vaccine-derived Poliovirus type 2 outbreak
- ◆ Ongoing Mpox outbreak in twelve counties

Reporting Coverage

Table 1. Health Facility Weekly IDSR Reporting Coverage, Liberia, Epi-week 50, 2024

County	Expected Reports from Health Facility	Reports Received	Received on Time	Completeness (%)	Timeliness (%)
Bomi	29	29	29	100	100
Bong	64	64	64	100	100
Gbarpolu	18	18	18	100	100
Grand Bassa	38	38	38	100	100
Grand Cape Mount	36	36	36	100	100
Grand Gedeh	24	24	24	100	100
Grand Kru	25	25	25	100	100
Lofa	61	61	61	100	100
Margibi	64	63	63	99	100
Maryland	28	28	28	100	100
Montserrado	371	371	367	100	99
Nimba	102	102	102	100	100
Rivercess	21	21	21	100	100
River Gee	21	21	21	100	100
Sinoe	41	41	41	100	100
Liberia	943	942	938	99	99

942(100%)
Health facilities reported IDSR data

98(100%)
Health districts reported IDSR data

938(99%)
Health facilities reported timely IDSR data

Legend: ≥80 <80

◆ The national target for weekly IDSR reporting is 80%. All counties reported on time. Health facility timeliness is monitored at the health district level.

Vaccine-Preventable Diseases

Measles

Six (6) suspected cases were reported from Nimba (3), Montserrado (2), and Maryland (1) Counties

- Two (2) specimens were collected, and pending testing at NRL
- Sixty-seven percent (4/6) of the suspected cases were vaccinated for measles (see Table 2)

Cumulatively, 1,773 suspected cases have been reported since Epi-week 1 (see Table 3)

- Of the total reported, 1416 confirmed cases
 - 54% were reported to have previously been vaccinated
 - 35% were unvaccinated
 - 11% had unknown vaccination status
- Fifty-two percent (732/1416) of the confirmed cases are below 5 years
- Proportion of suspected cases with sample collected 46% (812/1773)
- Proportion of suspected cases with sample tested 68% (552/812) [negative – 353, positive – 195, indeterminate-4]
- Proportion of negative Measles cases tested for Rubella 90% (320/353) [negative – 292, positive – 28]

Liberia’s annualized non-measles febrile rash illness rate now stands at **6.9 per 100,000**. Montserrado and Margibi Counties are below the target (see Table 3)

Table 2. Distribution and Vaccination Status of Measles Cases, Liberia, Epi-week 50, 2024

County	Reported cases	Vaccinated	Number of Doses Received		
			One Dose	Two Doses	Doses Not Indicated
Maryland	1	1	0	1	0
Montserrado	2	1	1	0	0
Nimba	3	2	1	0	0
Total	6	4	2	1	0

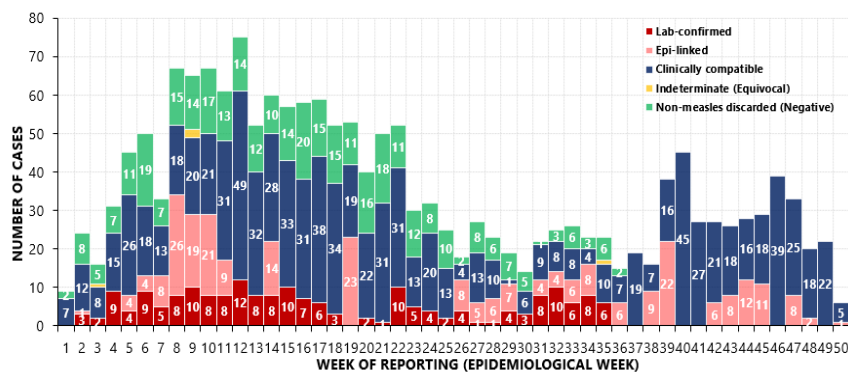


Figure 2. Distribution of Measles Cases by Reporting Week and Epi-classification, Liberia, Epi-week 1 – 50 2024

Table 3. Classification of measles, reporting rate, and annualized non-measles rash illness rate per 100,000 population by County, Liberia, Epi-week 1 – 50, 2024

Reporting County	Epi-classification					Cumulative	Annualized Non-Measles Febrile Rash Illness Rate
	Lab confirmed	Epi-linked	Clinically compatible	Indeterminate (Equivocal)	Discarded (Negative)		
Bomi	4	0	14	0	9	27	6.8
Bong	2	0	27	0	9	38	2.0
Gbarpolu	7	0	20	1	26	54	27.9
Grand Bassa	3	0	42	0	16	61	5.6
Grand Cape Mount	7	0	22	0	28	57	15.9
Grand Gedeh	37	28	88	0	39	192	18.0
Grand Kru	31	35	55	0	44	165	40.0
Lofa	5	0	35	0	15	55	4.2
Margibi	0	0	12	0	4	16	1.3
Maryland	21	13	171	0	8	213	4.8
Montserrado	4	0	48	0	21	73	1.1
Nimba	36	172	320	1	27	556	4.4
River Gee	23	13	68	1	39	144	32.0
Rivercess	1	0	4	0	6	11	6.6
Sinoe	14	1	33	1	62	111	41.7
Liberia	195	262	959	4	353	1773	6.8

Target Achieved >=2 Below Target <2

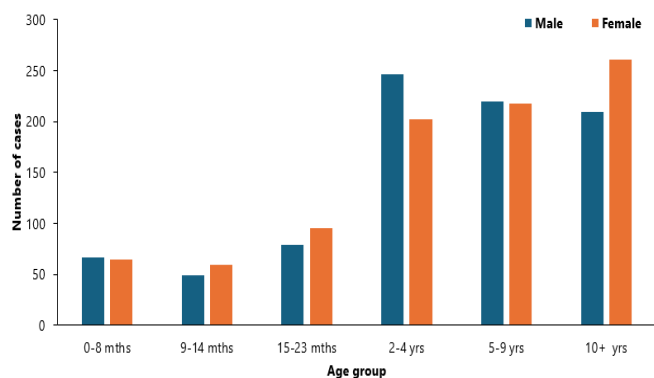


Figure 3. Suspected Measles Cases by Age-group and Sex, Liberia, Epi-week 1 – 50, 2024

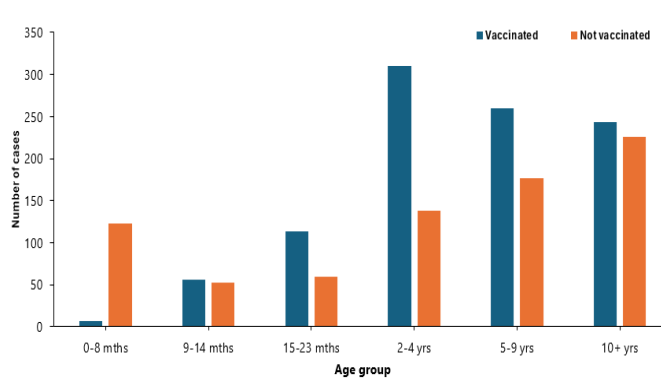


Figure 4. Vaccination status of Suspected Measles Cases by Age Group, Liberia, Epi-week 1 – 50, 2024

Table 4. Measles Outbreak by County and Case Status, Liberia, December 13, 2021 – December 15, 2024

County	Total Cases	Active	Recovery	Deaths	No. of Districts
Montserrado	5,373	0	5,304	69	0/7
Nimba	1498	3	1381	4	5/11
Grand Bassa	950	0	917	7	1/8
Margibi	803	0	802	1	0/4
Bong	578	0	575	3	0/9
Maryland	1,320	0	1320	0	0/6
Lofa	292	0	292	0	0/6
Grand Kru	1,100	0	1,098	2	0/5
Grand Cape Mount	187	0	184	3	0/5
Bomi	148	0	143	5	0/4
Rivercess	84	0	83	1	0/6
Gbarpolu	64	0	64	0	0/5
Grand Gedeh	604	0	604	0	0/6
River Gee	134	0	134	0	0/6
Sinoe	247	0	247	0	0/10
Total	13,371	3	13,148	95	5/98

PUBLIC HEALTH ACTION

I. Coordination

- The response has been led by the County Health Teams with technical support from the National Public Health Institute of Liberia (NPHIL), the Ministry of Health (MoH), and partners.
- IMS meetings are being held for coordination and mobilization of resources in Nimba County.

II. Epidemiological Surveillance

- Active case search ongoing in affected communities

III. Case management

- Case management ongoing in Nimba County

IV. Immunization

- Routine immunization ongoing across the country

V. Laboratory

- The National Public Health Reference Laboratory (NPHRL) continues testing of Measles samples

VI. Risk Communication & Community Engagement

- Awareness and health education on the upcoming measles Supplemental Immunization Activities (SIA) ongoing nationwide.

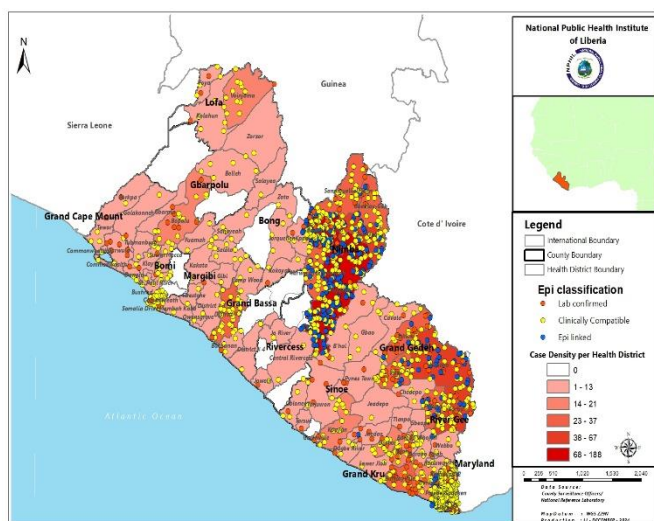


Figure 5. Measles outbreak by County and Case Status, Liberia, December 13, 2021 – December 15, 2024

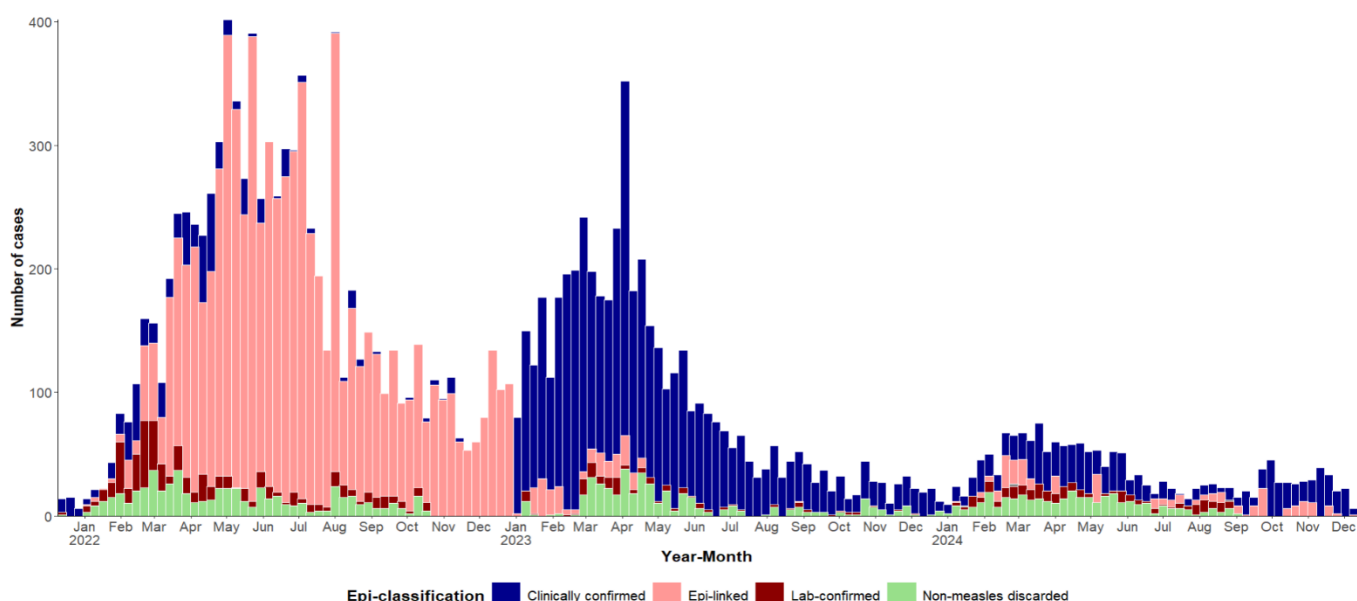


Figure 6: Epi-curve of Measles Cases by monthly classification, Liberia, December 13, 2021 - December 15, 2024

Acute Flaccid Paralysis (AFP)

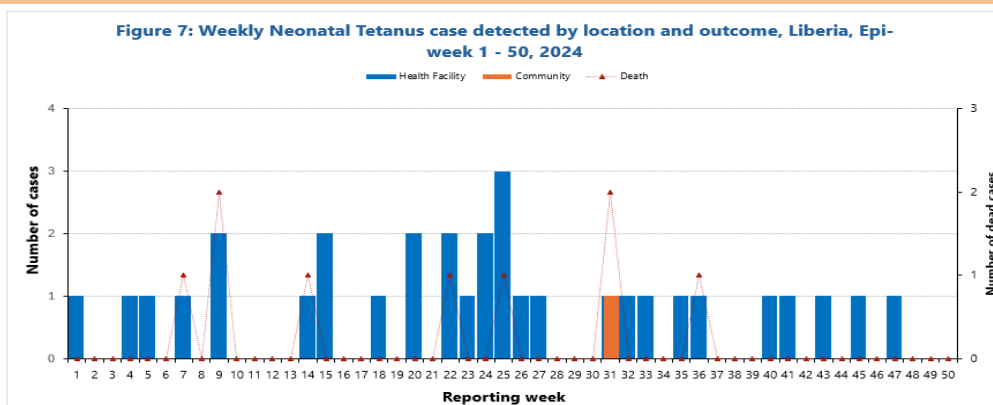
- ☞ One case was reported from Nimba County
 - Specimens were collected and shipped
- ☞ Cumulatively, 103 cases have been reported since Epi-week 1. One (1) cVDPV2¹, 1 Poliovirus-2, 85 negative, 13 NPENT, and 3 AFP specimens pending testing at the laboratory
- ☞ As of week 50, the annualized non-polio AFP rate is at **4.4 per 100,000** populations under 15 years of age.

Table 5. Non-Polio AFP Rate 3/100,000 <15 years by County, Liberia, Epi-week 1 – 50, 2024

County	< 15 years pop	# of AFP Cases Reported	# of Cases with Lab Result	Non-Polio AFP Rate	# of cases <14 days specimen collected	% of stool <14days	# of NPENTs	% of NPENT
Bomi	62196	5	5	8.4	5	100%	0	0%
Bong	215425	2	1	1.0	2	100%	0	0%
Gbarpolu	43630	4	4	9.5	4	100%	0	0%
Grand Bassa	134743	3	3	2.3	3	100%	0	0%
Grand Cape Mount	82471	8	7	10.1	8	100%	1	13%
Grand Gedeh	101412	7	6	7.2	7	100%	1	14%
Grand Kru	51467	3	3	6.1	3	100%	1	33%
Lofa	168626	10	10	6.2	10	100%	1	10%
Margibi	140931	1	1	0.7	1	100%	0	0%
Maryland	78808	3	3	4.0	3	100%	0	0%
Montserrado	898124	25	24	2.9	25	100%	4	16%
Nimba	285705	24	23	8.7	24	100%	5	21%
Rivercess	42729	2	2	4.9	2	100%	0	0%
River Gee	57047	1	1	1.8	1	100%	0	0%
Sinoe	69556	5	5	7.5	5	100%	0	0%
Liberia	2432868	103	98	4.4	103	100%	13	13%
Non-Polio AFP Rate	<3			<80%	Non-Polio Enterovirus	<10%		
	≥3	Stool adequacy		≥80%		≥10%	Silent	

Neonatal Tetanus

- ☞ Zero clinically confirmed cases reported
- ☞ Cumulatively, 33 cases have been reported, including 10 deaths since Epi-week 1. Case Fatality Rate is 30% and community detection is at 3%.



Influenza-Like Illnesses

Coronavirus Disease (COVID-19)

- ☞ Zero suspected cases were reported
- ☞ Cumulatively, three (3) cases have been reported since Epi-week 1, with two positive and one negative

Influenza

- ☞ Zero cases were reported
- ☞ Cumulatively, 118 suspected cases reported since Epi-week 1.
 - One hundred eighteen (118) specimens were collected: 110 tested negative, 4 specimens were discarded, and 4 positive

¹ circulating Vaccine-Derived Poliovirus type 2

Viral Haemorrhagic Fever

Lassa fever

- ☞ Five (5) suspected cases, including three deaths, were reported from Bong (3) and Nimba (2) Counties
 - Three specimens were collected, 1 tested positive, and 2 negative
- ☞ Cumulatively, 238 suspected cases have been reported since Epi-week 1.
 - Proportion of suspected cases with sample collected (235/238) 99%. Seven of the collected samples were discarded
 - Proportion of suspected cases with sample tested (222/235) 95%
 - Forty (40) positive, including 12 deaths, 2 indeterminate, and 180 negative
 - Case Fatality Rate: (12/40) 30%
 - Nimba County accounts for 38% of the total confirmed case

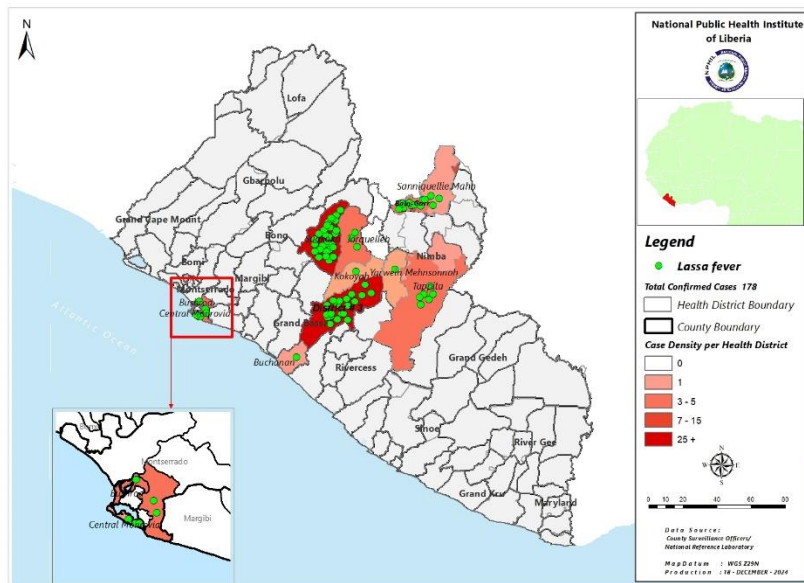
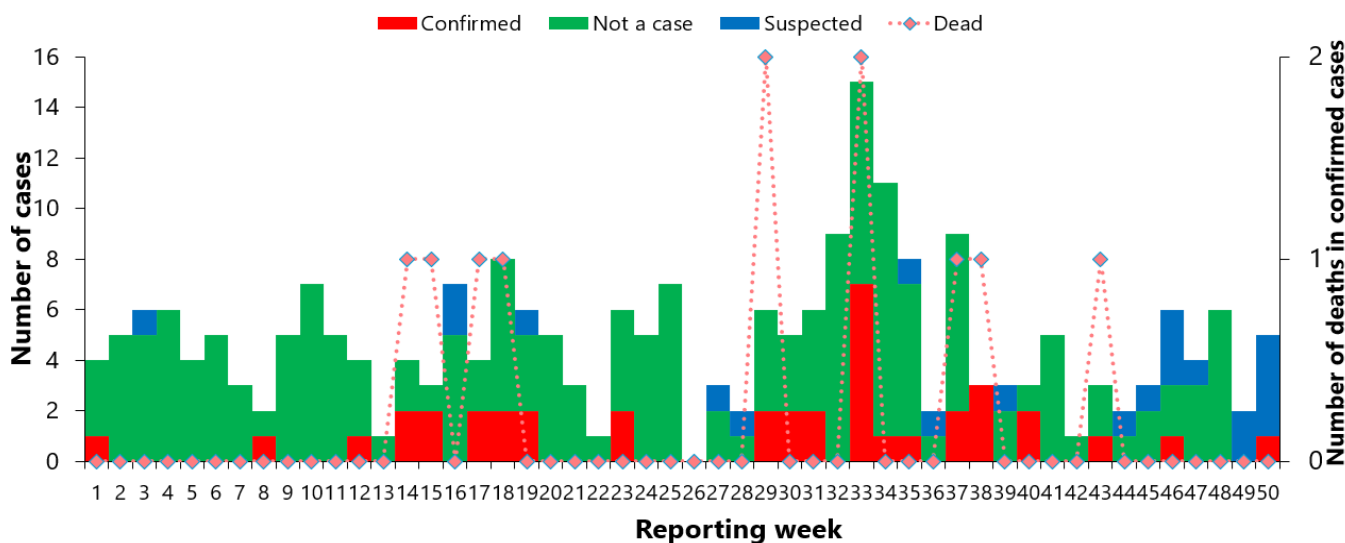


Figure 8. Geospatial distribution of confirmed Lassa fever by Health District, Liberia, Epi-week 1 – 50, 2024

Figure 9: Weekly distribution of Lassa fever cases by Epi-classification, Liberia, Epi-week 1 – 50, 2024



Outbreak Section (January 6, 2022 – December 20, 2024)

- ☞ One new confirmed case (death) was reported from Bong County
- ☞ Eight (8) contacts line-listed and undergoing 21 days of follow-up
- ☞ A total of 178 confirmed cases, including 56 deaths reported
- ☞ Cumulative Case Fatality Rate (CFR): 31% (56/178)
- ☞ Two (2) counties are currently in outbreak (1 in countdown)

PUBLIC HEALTH RESPONSE

I. Coordination

- The National Public Health Institute of Liberia (NPHIL) and the Ministry of Health (MoH) are providing technical support to the affected counties with support from partners

II. Epidemiological Surveillance

- Active case search ongoing in affected communities
- Eight (8) contacts line-listed and undergoing 21 days of follow-up
- Two counties (Bong and Nimba) are currently in outbreak, with Nimba in countdown phase

- o Weekly sit-reps developed and disseminated to stakeholders

III. Case management

- o Ribavirin distributed to affected counties
- o No confirmed case in isolation

IV. Risk Communication and Community Engagement

- o Risk communication and community engagement ongoing in affected communities

V. Dead Body Management

- o A total of 56 deaths were recorded among confirmed cases

- o Safe and dignified burial conducted for the deceased cases

VI. Laboratory

- o The National Public Health Reference Laboratory continues testing of Lassa fever samples
- o A total of 178 Lassa fever cases have been confirmed since this outbreak

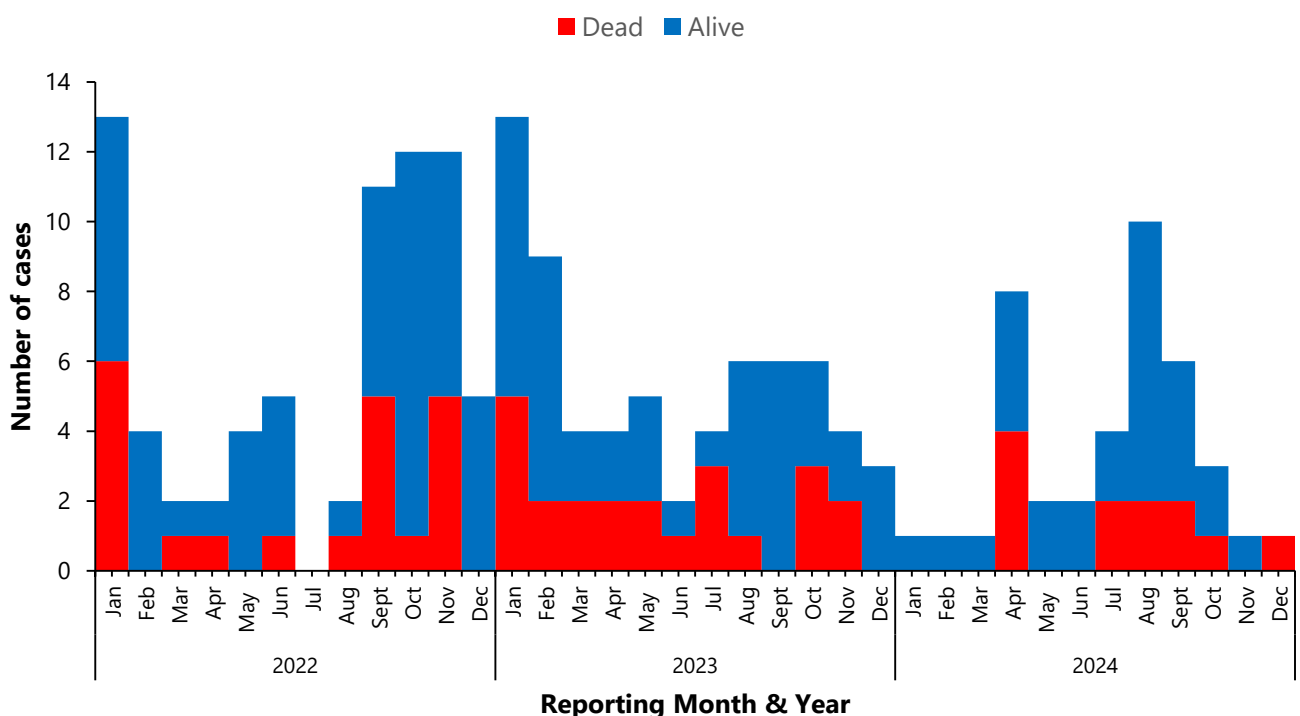
Table 6. Summary of Lassa fever Outbreak, Liberia, January 6, 2022 – December 20, 2024

County	Outbreak Districts	Outbreak Start Date	Total suspected	Total confirmed	HCWs confirmed	Total Deaths	Deaths in HCWs	CFR %	Total Contacts	# HCW contacts	Contacts became cases	Contacts under follow up	Contacts completed	Days in countdown	Outbreak Status
Montserrado	Bushrod	13-Feb-23	17	1	0	0	0	0%	29	21	0	0	29	Completed	Ended
	Central Monrovia	27-Nov-23	1	2	0	1	0	50%	49	0	0	0	49	Completed	Ended
	Central Monrovia	3-Mar-23	38	2	0	1	0	50%	28	27	0	0	28	Completed	Ended
	Bushrod	30-Apr-24	2	1	0	0	0	0%	14	6	0	0	14	Completed	Ended
Bong	Suakoko	21-Apr-23	192	54	18	13	2	24%	496	114	6	0	417	Completed	Ended
	Jorquelleh	15-Oct-23	14	6	3	1	1	17%	121	86	3	0	169	Completed	Ended
	Kokoyah	6-Jun-24	3	1	0	0	0	0%	8	0	0	0	8	Completed	Ended
	Suakoko	29-Jul-24	11	5	1	0	0	0%	37	14	0	0	37	Completed	Ended
	Suakoko	23-Feb-24	31	3	0	0	0	0%	29	14	0	0	29	Completed	Ended
	Salala	8-Mar-24	2	2	0	1	0	50%	21	0	0	0	21	Completed	Ended
	Jorquelleh	11-Apr-24	3	2	0	1	0	0%	41	30	0	0	41	Completed	Ended
	Suakoko	19-Nov-24	3	2	0	1	0	0%	8	4	0	8	8	Active	Ongoing
Grand Bassa	District 3A&B	21-Aug-23	87	44	0	10	0	23%	177	40	40	0	159	Completed	Ended
	Buchanan	11-Aug-23	2	1	0	1	0	100%	4	2	0	0	4	Completed	Ended
	District 3A&B	30-Apr-24	7	3	0	1	0	33%	12	3	0	0	12	Completed	Ended
	District 3A&B	3-Sep-24	7	6	0	1	0	17%	27	10	0	0	27	Completed	Ended
Nimba	Saclepea-Mah	21-Nov-23	4	2	0	1	0	50%	5	0	0	0	5	Completed	Ended
	Sanniqueulle-Mah	6-Feb-23	43	15	0	9	0	60%	43	35	8	0	43	Completed	Ended
	Tappita	29-Jul-24	5	2	0	1	0	50%	27	24	0	0	27	Completed	Ended
	Tappita	20-Nov-23	12	5	0	3	0	60%	88	39	4	0	77	Completed	Ended
	Bain-Garr	1-Jun-23	25	6	0	3	0	50%	61	25	0	0	31	Completed	Ended
	Bain-Garr	15-Apr-24	5	2	0	1	0	50%	25	7	0	0	25	Completed	Ended
Bain-Garr	18-Jul-24	20	10	0	5	0	50%	173	98	1	0	173	31	Countdown	
River Gee	Putupo	25-Nov-22	2	1	0	1	0	100%	14	0	0	0	14	Completed	Ended
Total			536	178	22	56	3	31%	1537	599	62	8	1447		

Legend: Outbreaks in countdown stage in reporting districts

Active/ ongoing outbreaks not in countdown stage with active response interventions in reporting districts

Figure 10: Epi-curve of confirmed Lassa fever Cases by Outcome, Liberia, January 6, 2022 - December 20, 2024



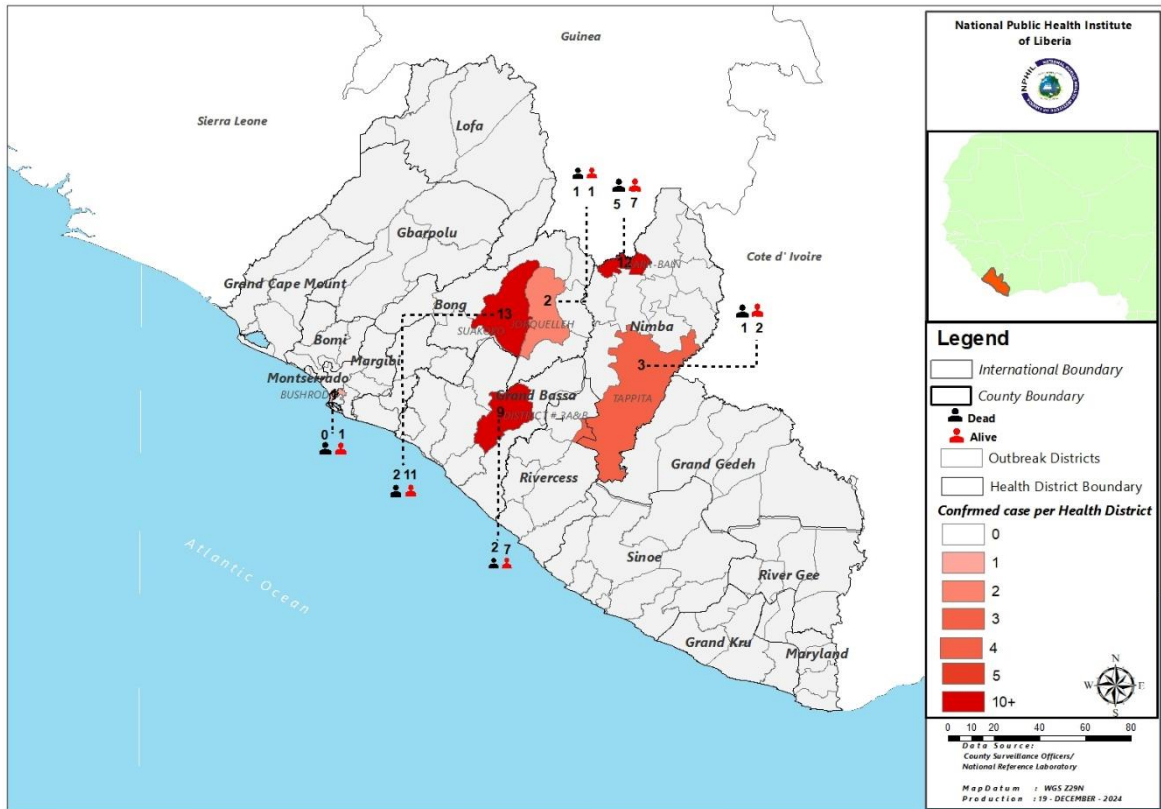


Figure 11. Geospatial distribution of outbreak district with number of confirmed Lassa fever cases, Liberia, Epi-week 1 – 50, 2024

Yellow Fever

- ☞ Two (2) suspected cases were reported from Nimba and Grand Kru Counties
 - Specimens were collected and tested negative
- ☞ Cumulatively, 99 cases have been reported since Epi-week 1.
 - Proportion of suspected cases with samples collected (96/99) 97%; however, 1 was rejected
 - Proportion of suspected cases with samples tested (93/96) 97% [presumptive positive – 4, negative – 88, indeterminate – 1]

Ebola Virus Disease / Marburg Virus Disease

- ☞ Zero suspected cases were reported
- ☞ Cumulatively, 5 suspected cases were reported

Dengue

- ☞ Zero suspected cases were reported
- ☞ Cumulatively, 7 suspected cases were reported

Diarrheal Diseases

Acute Bloody Diarrhoea (Shigellosis)

- ☞ Four (4) cases were reported from Lofa (3) and Grand Gedeh (1), Counties
 - No specimen was collected
- ☞ Cumulatively, 407 cases have been reported since Epi-week 1.
 - 231 specimens were collected, with 182 received at the Lab. Of the 182 specimens, 144 tested negative, 24 confirmed (*S. flexneri*-4, *S. sonnei*-9, others-11), 7 rejected, and 7 pending testing

Severe Acute Watery Diarrhoea (Cholera)

- ☞ Five (5) suspected cases were reported from Nimba (2), Bong (1), Rivercess (1), and Maryland (1) Counties
 - Three specimens were collected, and pending testing
- ☞ Cumulatively, 326 cases have been reported since Epi-week 1.
 - 164 specimens collected, 121 received at the laboratory
 - 98 tested negative, 12 rejected, and 11 pending testing.

Other Reportable Diseases

Animal bite (Human Exposure to Rabies)

- Seventy-one (71) dog bite cases were reported from Montserrado (17), Nimba (15), Margibi (9), Grand Kru (6), Maryland (5), Bong (3), Bomi (3), Lofa (3), Rivercess (3), Grand Bassa (2), Sinoe (2) Grand Cape Mount (1), Grand Gedeh (1) and Gbarpolu (1) Counties
- Proportion of cases investigated is 30% (21/71)
- PEP was administered to twenty-one (21) persons in Maryland (5), Montserrado (5), Rivercess (3), Nimba (2), Bomi (2), Bong (1), Grand Gedeh (1), Lofa (1), and Margibi (1) Counties
- Cumulatively, 2,918 cases have been reported, including 7 deaths (*suspected human rabies*) since Epi-week 1.

Figure 12. Geospatial distribution of Human Exposure to Animal Bites Cases by County, Liberia, Epi-week 1 – 50, 2024

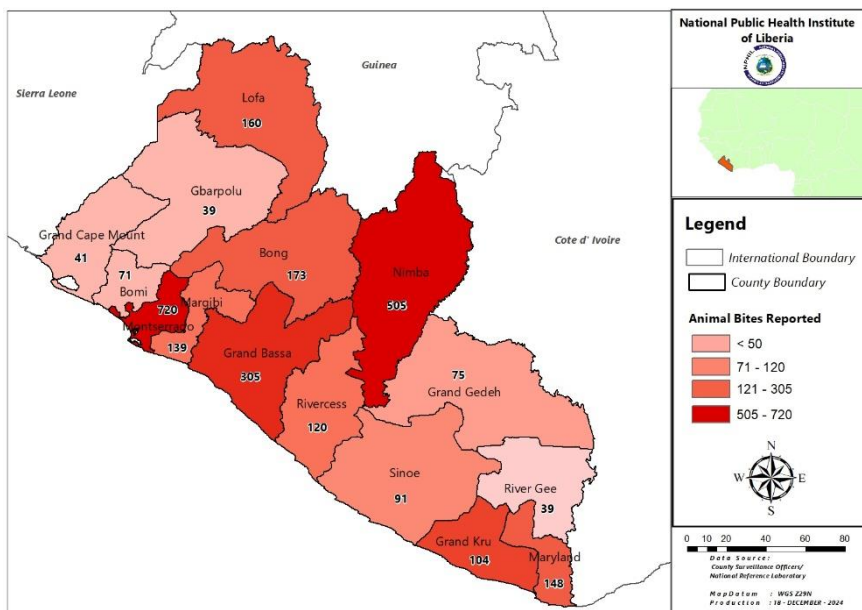


Figure 14. Human Exposure to Animal Bites by County & PEP Administration, Liberia Epi-week 50, 2024

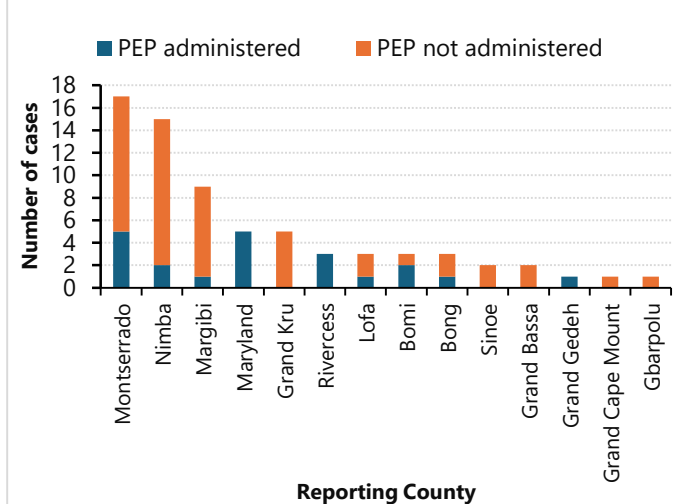
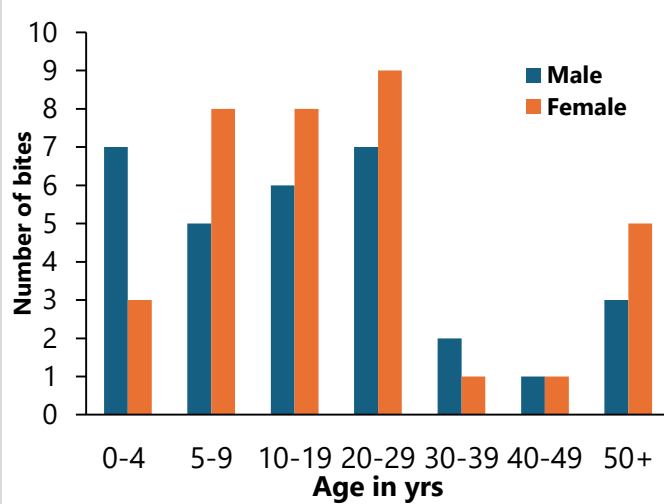


Figure 13. Distribution of Animal Bite Cases by Sex, Liberia, Epi-week 50, 2024



Meningitis

- Zero cases were reported
- Cumulatively, 21 suspected cases have been reported
 - Proportion of specimen collected (18/21) 86%, 3 specimens not collected
 - Proportion of specimens tested (17/18) 94% (15 negative, 2 positive)

Mpox

- Twenty (20) suspected cases were reported from Nimba (11), Rivercess (4), Grand Bassa (2), Montserrado (1), Sinoe (1), and Lofa (1) Counties
 - Specimens were collected, 19 tested negative, and 1 pending testing
- Cumulatively, 397 suspected cases have been reported, 383 samples collected with 1 rejected
 - Three hundred forty-four (344) tested: 63 positive, 277 negative and 4 indeterminate

- ☒ No new confirmed case reported
- ☒ Total of 20 (10-Rivercess, 10-Grand Gedeh) contacts undergoing 21 days of follow-up

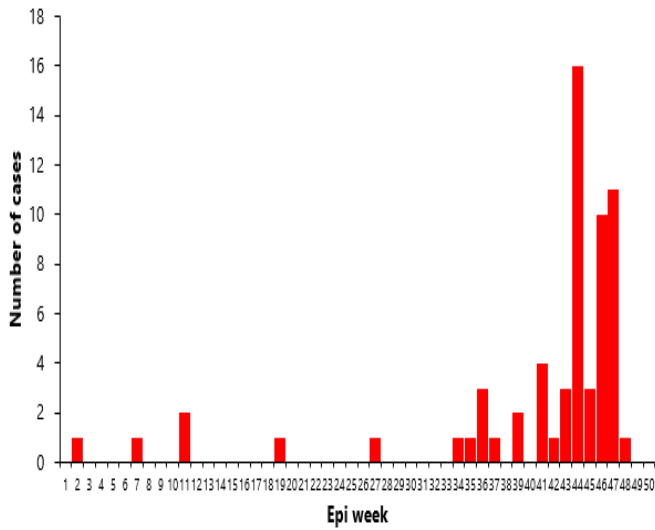


Figure 15. Weekly epi-curve of Mpox lab-confirmed cases detected in Liberia, Epi-week 1 - 50, 2024

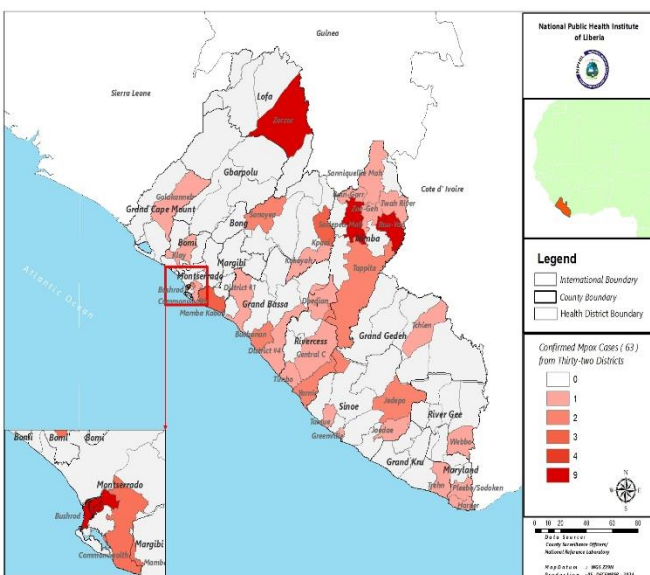


Figure 16. Distribution of Lab-confirmed Mpox cases by Health District, Liberia, January 1 – December 15, 2024

PUBLIC HEALTH RESPONSE

I. Coordination

- Conduct regular IMS meetings at national and subnational levels in affected counties to direct response efforts
- Production of regular Sitreps and dissemination

II. Epidemiological Surveillance

- Active media scanning and community case finding continue through EIOS platform
- Continue to follow up with response counties to obtain updates on the status of the Mpox outbreak
- Total of 20 (10-Rivercess, 10-Grand Gedeh) contacts undergoing 21 days of follow-up

III. Case management

- Twenty 6 (2-Rivercess, 1-Nimba, 1-Sinoe, 1-Grand Bassa, 1-Grand Gedeh) active cases

IV. Laboratory

- Sequencing results showed Monkeypox virus Clade IIa and Clade IIb
- The National Public Health Reference Laboratory continues the testing of Mpox samples

V. Risk Communication & Community Engagement

- Ongoing community engagement and awareness creation via a radio station in partnership between the RCCE team and affected County Health teams

VI. Infection Prevention and Control (IPC)

- Ongoing distribution of IPC supplies to the 15 Counties; 10/15 received supplies

NEXT STEPS

- Continue active case search in the affected communities

Other Events of Public Health Importance

Maternal Mortality

- ☞ Zero deaths were reported
- ☞ No primary causes of death
- ☞ Cumulatively, 284 deaths have been reported since Epi-week 1, of which (258) 91% were reported from health facilities and (26) 9% from communities.
 - Proportion of deaths reviewed (138/284) 49%.
- ☞ Annualized maternal mortality ratio is at **127 per 100,000 live births** (Table 8). The expected MMR based on 2019-20 Demographic Health Survey (DHS) is 742 deaths per 100,000 live births.

Table 8. Cumulative Maternal Mortality reporting rate and Annualized Maternal Mortality per 100,000 live births by County, Liberia, Week 1 – 50, 2024

County	Estimated Annual Live birth (4.3%)	Current week	Cumulative	% of Cumulative Maternal deaths	Annualized Maternal Mortality
Grand Bassa	12875	0	24	8.5	194
Montserrado	85821	0	139	48.9	168
Margibi	13467	0	19	6.7	147
Nimba	27301	0	38	13.4	145
Maryland	7531	0	9	3.2	124
Grand Cape Mount	7881	0	9	3.2	119
Grand Kru	4918	0	5	1.8	106
Rivercess	4083	0	4	1.4	102
Bomi	5943	0	5	1.8	87
Lofa	16113	0	13	4.6	84
Grand Gedeh	9690	0	6	2.1	64
Bong	20585	0	10	3.5	51
River Gee	5451	0	2	0.7	38
Sinoe	6646	0	1	0.4	16
Gbarpolu	4169	0	0	0.0	0
Liberia	232474	0	284	100.0	127

Neonatal Mortality

- ☞ Sixteen (16) deaths were reported from Montserrado (12), Margibi (3), and Grand Kru (1) Counties
- ☞ Primary causes of death were birth asphyxia (13), preterm (2), and jaundice (1)
- ☞ All deaths occurred in the health facility
- ☞ Cumulatively, 769 deaths have been reported since Epi-week 1.
 - Proportion of deaths reviewed (350/769) 46%
- ☞ Annualized neonatal mortality rate is at **4.2 per 1,000 live births** (Table 9).

Table 9 Neonatal Mortality. Cumulative Neonatal Mortality reporting rate and Annualized per 1,000 live births by County, Liberia, Week 1 – 50, 2024

County	Estimated Annual Live birth (4.3%)	Current week	Cumulative	% of Cumulative Neonatal deaths	Annualized Neonatal Mortality Rate/1,000
Maryland	7347	0	87	11.3	12.3
Grand Kru	3130	1	28	3.6	9.3
Montserrado	62479	12	472	61.4	7.9
Rivercess	3865	0	14	1.8	3.8
Sinoe	5534	0	17	2.2	3.2
Gbarpolu	4507	0	13	1.7	3.0
River Gee	3610	0	10	1.3	2.9
Grand Gedeh	6770	0	14	1.8	2.2
Margibi	11345	3	21	2.7	1.9
Lofa	14911	0	22	2.9	1.5
Bong	18775	0	30	3.9	1.7
Nimba	24970	0	32	4.2	1.3
Bomi	4546	0	3	0.4	0.7
Grand Bassa	11981	0	5	0.7	0.4
Grand Cape Mount	6868	0	1	0.1	0.2
Liberia	190636	16	769	100.0	4.2

Adverse Events Following Immunization (AEFI)/Adverse Drug Reaction (ADR)

- ☞ Fifteen (15) events were reported from Montserrado (4), Maryland (4), Bomi (3), Gbarpolu (1), Lofa (1), Margibi (1), and Grand Gedeh (1) Counties
- ☞ All reported cases were investigated and classified as non-serious. Related vaccines included Measles (9) and Penta (6)
- ☞ Cumulatively, 1236 events were reported since Epi-week 1.

Neglected Tropical Diseases

Buruli Ulcer

- ☞ Zero cases were reported
- ☞ Cumulatively, seven confirmed cases have been reported since Epi-week 1.

Border Surveillance Update

A total of 7256 travelers' were screened from eight (8) designated out of Forty-five (45) official Points of Entry, with incoming traveller's accounting for 53% (3814/7256) (Table 10).

Table 10. Cross-border activity at the POE for incoming and outgoing travelers, Liberia, Epi-week 50, 2024

Type of Ports	Point of Entry	Weekly total	Arrival	Departure	Total travelers with YB	Yellow Book Damage	Card Replaced	Travelers Vaccinated against YF & Issued book	Alerts detected/ Verified
Airport	James S. Paynes	27	23	4	0	0	0	0	0
	Robert Int'l Airport	5327	2878	2449	5290	1	34	6	0
Seaport	Freeport of Monrovia	96	48	48	96	0	0	0	0
	Buchanan Port	190	95	95	190	0	0	0	0
Ground Crossing	Bo Water Side	705	295	410	690	0	15	0	0
	Ganta	113	49	64	31	7	7	0	0
	Yekepa	205	144	61	45	0	0	0	0
	Loguatu	593	282	311	514	0	0	0	0
Total		7,256	3814	3442	6856	8	56	6	0

Note: Yellow book (YB) issue for both arrival and departure; Vaccination coverage for both arrival and departure

Public Health Measures

National level

- ☞ The Liberia State Party Annual Assessment 2024 with support from WHO was held at Golden Key hotel in Paynesville
- ☞ Reviewed and revised the 2nd Edition of One Health Governance Manual at Golden Gate Hotel, December 18-20, 2024
- ☞ Ongoing IMS meeting for coordination and resource mobilization
- ☞ Produced and disseminated situation reports (Lassa fever, Measles, etc...)
- ☞ Produced and disseminated weekly bullet
- ☞ Ongoing reclassification of suspected cases (Lassa fever, Mpox, AFP, and Measles)

County-level

☞ Surveillance

- Ongoing active case search and investigation for Mpox in affected counties
- Production of situational reports
- Active case search ongoing in affected and surrounding communities
- Awareness on Mpox surveillance ongoing across the 15 counties
- Maternal and new-born death review ongoing in counties

☞ Case Management

- Administration of PEP
- Isolation, management, treatment, and active case search for Lassa fever and Measles cases ongoing in affected counties

Appendix

Summary of Immediately Reportable Diseases, Conditions, and Events by County

Counties		Bomi	Bong	Gbarpolu	Grand Bassa	Grand Cape Mount	Grand Gedeh	Grand Kru	Lofa	Margibi	Maryland	Montserrado	Nimba	Rivercess	River Gee	Sinoe	Total Weekly	Cumulative Reported	Cumulative Lab-confirmed		
No. of Expected Health District		4	9	5	8	5	6	5	6	4	6	7	11	6	6	10	98				
No. of Health District Reported		4	9	5	8	5	6	5	6	4	6	7	11	6	6	10	98				
Vaccine Preventable Diseases	Acute Flaccid Paralysis (Suspected Polio)	A	0	0	0	0	0	0	0	0	0	0	1	0	0	0	1	103	2		
		D	0	0	0	0	0	0	0	0	0	0	0	0	0	0	0	0	0	0	
	Measles	A	0	0	0	0	0	0	0	0	0	1	2	3	0	0	0	6	1773	195	
		D	0	0	0	0	0	0	0	0	0	0	0	0	0	0	0	0	0	0	
	Neonatal Tetanus	A	0	0	0	0	0	0	0	0	0	0	0	0	0	0	0	0	0	23	0
		D	0	0	0	0	0	0	0	0	0	0	0	0	0	0	0	0	0	10	0
Yellow fever	A	0	0	0	0	0	0	1	0	0	0	0	1	0	0	0	2	98	3		
	D	0	0	0	0	0	0	0	0	0	0	0	0	0	0	0	0	1	1		
Viral Hemorrhagic Fever	Dengue fever	A	0	0	0	0	0	0	0	0	0	0	0	0	0	0	0	0	7	0	
		D	0	0	0	0	0	0	0	0	0	0	0	0	0	0	0	0	0	0	
	Ebola Virus Disease / Marburg Virus Disease	A	0	0	0	0	0	0	0	0	0	0	0	0	0	0	0	0	5	0	
		D	0	0	0	0	0	0	0	0	0	0	0	0	0	0	0	0	0	0	
	Lassa fever	A	0	1	0	0	0	0	0	0	0	0	0	1	0	0	0	2	205	28	
		D	0	2	0	0	0	0	0	0	0	0	0	1	0	0	0	3	33	12	
Influenza-Like Illnesses	COVID-19	A	0	0	0	0	0	0	0	0	0	0	0	0	0	0	0	0	3	1	
		D	0	0	0	0	0	0	0	0	0	0	0	0	0	0	0	0	0	0	
	Influenza	A	0	0	0	0	0	0	0	0	0	0	0	0	0	0	0	0	118	4	
		D	0	0	0	0	0	0	0	0	0	0	0	0	0	0	0	0	0	0	
Diarrheal Diseases	Acute Bloody Diarrhoea (Shigellosis)	A	0	0	0	0	1	0	3	0	0	0	0	0	0	0	0	4	407	24	
		D	0	0	0	0	0	0	0	0	0	0	0	0	0	0	0	0	0	0	
	Severe Acute Watery Diarrhoea (Cholera)	A	0	1	0	0	0	0	0	0	0	1	0	2	1	0	0	5	326	0	
		D	0	0	0	0	0	0	0	0	0	0	0	0	0	0	0	0	0	0	
Events of Public Health Importance	Maternal Mortality	D	0	0	0	0	0	0	0	0	0	0	0	0	0	0	0	0	284		
	Neonatal Mortality	D	0	0	0	0	0	1	0	3	0	12	0	0	0	0	0	16	769		
	Adverse Events Following Immunization (AEFI)	A	3	0	1	0	0	1	0	1	1	4	4	0	0	0	0	15	1236	0	
		D	0	0	0	0	0	0	0	0	0	0	0	0	0	0	0	0	0	0	
	Unexplained Cluster of Health Events/Disease	A	0	0	0	0	0	0	0	0	0	0	0	0	0	0	0	0	0	0	
		D	0	0	0	0	0	0	0	0	0	0	0	0	0	0	0	0	0	0	
Other Reportable Diseases	Mpox	A	0	0	0	2	0	0	1	0	0	1	11	4	0	1	20	397	63		
		D	0	0	0	0	0	0	0	0	0	0	0	0	0	0	0	0	0		
	Tuberculosis	A	0	0	0	0	0	0	0	0	0	0	0	0	0	0	0	0	0	0	
		D	0	0	0	0	0	0	0	0	0	0	0	0	0	0	0	0	0	0	
	Human Exposure to Rabies (Suspected Human Rabies)	A	3	3	1	2	1	1	6	3	9	5	17	15	3	0	2	71	2911	0	
		D	0	0	0	0	0	0	0	0	0	0	0	0	0	0	0	0	7	0	
	Meningitis	A	0	0	0	0	0	0	0	0	0	0	0	0	0	0	0	0	21	2	
		D	0	0	0	0	0	0	0	0	0	0	0	0	0	0	0	0	0	0	
	Unexplained Cluster of deaths	A	0	0	0	0	0	0	0	0	0	0	0	0	0	0	0	0	0	0	
		D	0	0	0	0	0	0	0	0	0	0	0	0	0	0	0	0	0	0	
Neglected Tropical Diseases	Buruli Ulcer	A	0	0	0	0	0	0	0	0	0	0	0	0	0	0	0	0	125	7	
		D	0	0	0	0	0	0	0	0	0	0	0	0	0	0	0	0	0	0	
	Yaws	A	0	0	0	0	0	0	0	0	0	0	0	0	0	0	0	0	0	0	
		D	0	0	0	0	0	0	0	0	0	0	0	0	0	0	0	0	0	0	
TOTAL		6	7	2	4	1	3	8	8	13	11	36	35	8	0	3	145	8862	342		

D = Dead A = Alive

- ☞ **Completeness** refers to the proportion of expected weekly IDSR reports received (target: ≥80%)
- ☞ **Timeliness** refers to the proportion of expected weekly IDSR reports received by the next level on time (target: ≥80%). The time requirement for weekly IDSR reports:
 - Health facility - required on or before 5:00 pm every Saturday to the district level
 - Health district - required on or before 5:00 pm every Sunday to the county level
 - County - required on or before 5:00 pm every Monday to the national level
- ☞ **Non-polio AFP rate** is the proportion of non-polio AFP cases per 100,000 among the estimated population under 15 years of age in 2024 (annual target: ≥2/100,000)
- ☞ **Non-measles febrile rash illness rate** refers to the proportion of Negative measles cases per 100,000 population
- ☞ **Annualized maternal mortality rate** refers to the maternal mortality rate of a given period of less than one year, and it is the number of maternal deaths per 100,000 live births
- ☞ **Annualized neonatal mortality rate** refers to the neonatal mortality ratio of a given period of less than one year, and it is the number of neonatal deaths per 1,000 live births
- ☞ **Epi-linked** refers to any suspected case that has not had a specimen taken for serologic confirmation but is linked to a laboratory-confirmed case
- ☞ **Confirmed case** refers to a case whose specimen has tested positive or reactive upon laboratory testing or has been classified as confirmed by either epidemiologic linkage with a confirmed case or clinical compatibility with the disease or condition

Epidemiological bulletin published with support from WHO and CDC

For comments or questions, please contact

Ralph W. Jetoh, MD
Director
 Infectious Disease and Epidemiology Division
 National Public Health Institute of Liberia
 Republic of Liberia
 Email: ralphica2000@gmail.com
 Phone: +231.77.737.2655/ +231.88.652.6388
 Website: www.nphil.gov.lr

**National Public Health
Institute of Liberia
(NPHIL)**

MISSION

To prevent and control public health threats by promoting healthy outcomes and serving as a source of knowledge

VISION

A centre of excellence to create health outcomes for Liberians through a strong preventive health system and expertise

EDITORIAL TEAM

DIDE / NPHIL

- A. N. Mianah
- J. S. Kokro
- M.G. Jeuronlon
- E. Dwalu
- A.B. Corvah
- S. K. Zayzay
- T. L. Hall
- S. L. Flomo
- M. S. Quiah
- J. O. Abel
- P. J. Thomas
- H. M. Sherman
- M.D. Vaye
- N. K. Dovillie
- A. Coker
- S. Nuwolo
- M. Gbeyeah
- E. Junius
- H. Howard-Bridges

**Ministry of Health
WHO Liberia Office
US CDC Liberia Office
Africa CDC-Liberia Office**

Data sources

Data and information is provided by the fifteen County Surveillance Officers and National Public Health Reference Laboratory via regular weekly reports, telephone calls and email exchanges. Situations are evolving and dynamic therefore numbers stated are subject to change.