



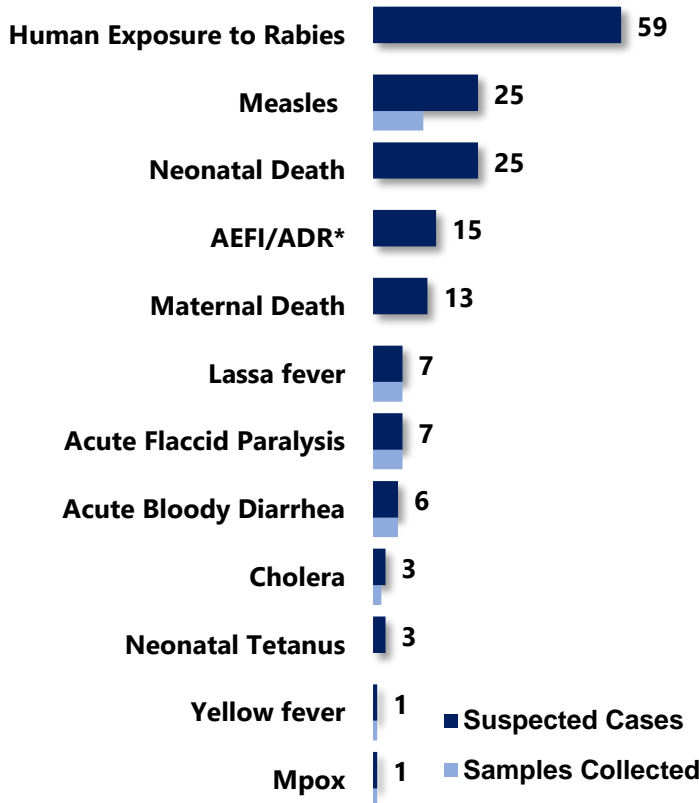
# Liberia IDSR Epidemiology Bulletin

2024 Epi-week 25 (June 17 – 23)

Country Population: 5,406,374 | Volume 20 Issue 24 | June 17 – 23, 2024 || Data Source: CSOs from 15 Counties and Laboratory

## Highlights

### Figure 1: Public Health Events Reported



### Keynotes and Events of Public Health Significance

- ◆ A total of **165 events** of public health importance, including **38 deaths** reported
- ◆ **Completeness and Timeliness** of health facility reports were both **98%**.
- ◆ **Ongoing Lassa fever outbreak** in **two** Counties
- ◆ **Ongoing Measles outbreak** in **six** Counties

## Reporting Coverage

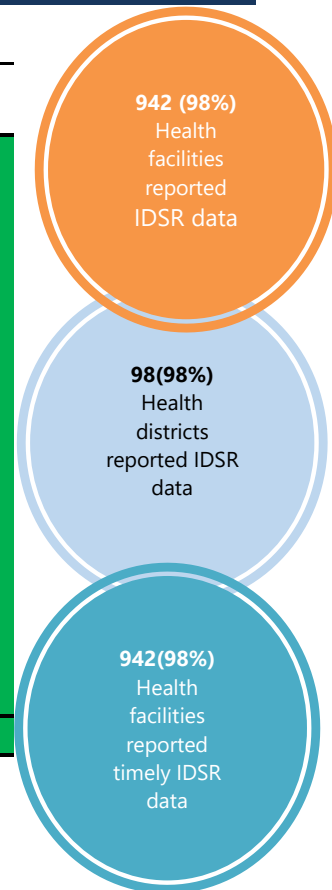
Table 1: Health Facility Weekly IDSR Reporting Coverage, Liberia, Epi-week 25, 2024

County	Expected Reports from HF*	Reports Received	Received on Time	Completeness (%)	Timeliness (%)
Bomi	29	29	29	100	100
Bong	66	66	66	100	100
Gbarpolu	18	18	18	100	100
Grand Bassa	38	38	38	100	100
Grand Cape Mount	36	36	36	100	100
Grand Gedeh	24	24	24	100	100
Grand Kru	25	25	25	100	100
Lofa	61	61	61	100	100
Margibi	65	65	65	100	100
Maryland	28	28	28	100	100
Montserrado	391	367	367	94	94
Nimba	102	102	102	100	100
Rivercess	21	21	21	100	100
River Gee	21	21	21	100	100
Sinoe	41	41	41	100	100
<b>Liberia</b>	<b>966</b>	<b>942</b>	<b>942</b>	<b>98</b>	<b>98</b>

Legend:



- ◆ The national target for weekly IDSR reporting is 80%. Four counties, Nimba, Lofa, Bomi and Bong, reported late.
- ◆ Health facility timeliness is monitored at the health district level



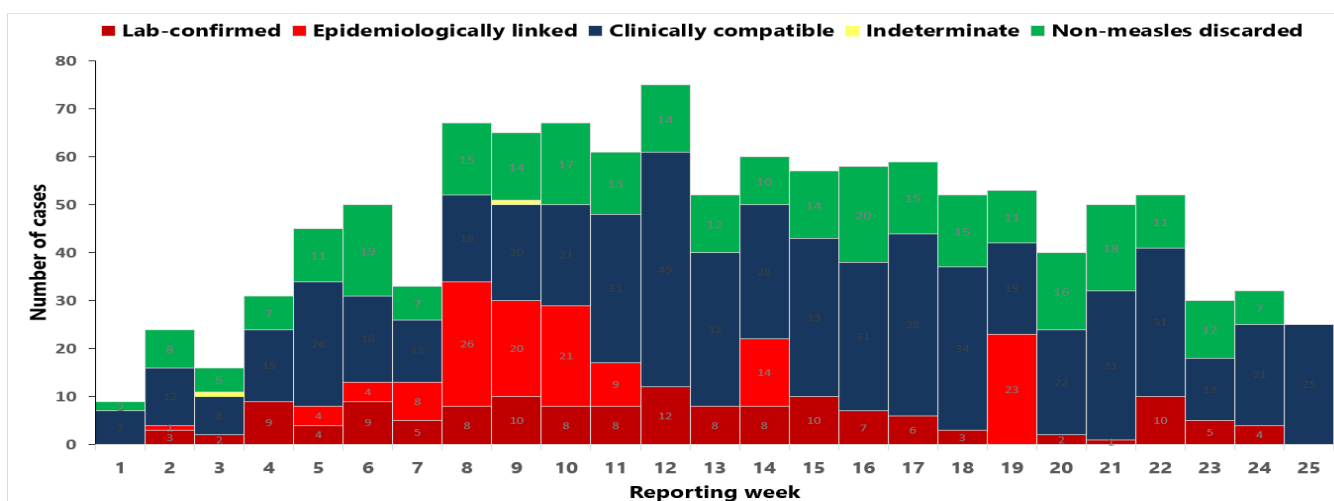
## Vaccine-Preventable Diseases

### Measles

- ☞ Twenty-five (25) suspected cases were reported from Maryland (8), Nimba (5), Grand Gedeh (3), River Gee (3), Montserrado (2), Sinoe (1), Lofa (1), Gbarpolu (1), and Bong (1)
  - Twelve (12) specimens were collected and pending laboratory confirmation
  - Fifty-six percent (14/25) of the suspected cases were vaccinated for measles (*see Table 3*)
- ☞ Cumulatively, 1163 suspected cases have been reported since Epi-week 1 (*see Table 2*)
  - Of the total reported 870 lab-confirmed, epi-linked, and clinically compatible cases, 54% were reported to have previously been vaccinated, 38% were unvaccinated, while 8% had unknown vaccination status
  - Fifty-one percent (446/870) of the lab-confirmed, epi-linked, and clinically compatible cases are below 5 years
  - Proportion of suspected cases with sample collected 46% (534/1163)
  - Proportion of suspected cases with sample tested 96% (433/452) [negative – 288, positive – 141]
  - Proportion of negative Measles cases tested for Rubella 94% (272/288) [negative – 249, positive – 23]
- ☞ Liberia's annualized non-measles febrile rash illness rate now stands at 11.3 per 100,000. Montserrado County is below the target (*see Table 2*)

**Table 2. Classification of measles, reporting rate, and annualized non-measles rash illness rate per 100,000 populations by County, Liberia, Week 1-25, 2024**

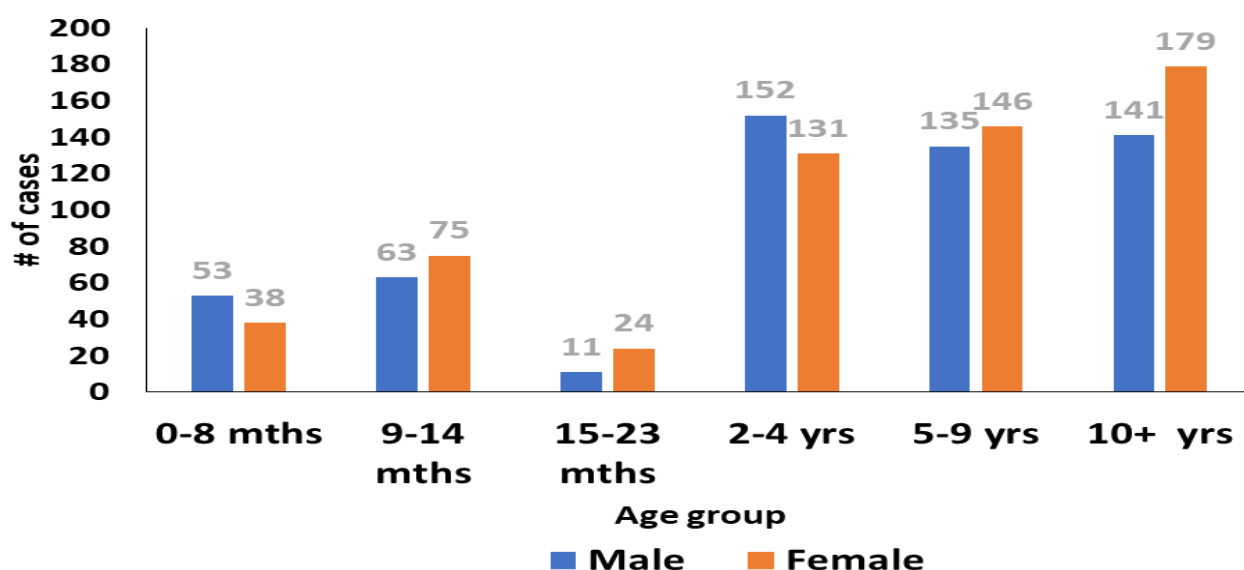
Reporting County	Epi-classification					Cumulative	Annualized Non Measles Febrile Rash Illness Rate
	Lab confirmed	Epi-linked	Clinically compatible	Indeterminate (Equivocal)	Discarded (Negative)		
Bomi	1	0	4	0	5	10	7.5
Bong	1	0	21	0	8	30	3.5
Gbarpolu	4	0	11	1	24	40	51.5
Grand Bassa	2	0	7	0	14	23	9.7
Grand Cape Mount	3	0	6	0	24	33	27.2
Grand Gedeh	33	27	62	0	28	150	25.8
Grand Kru	26	35	39	0	43	143	78.2
Lofa	0	0	17	0	12	29	6.7
Margibi	0	0	2	0	4	6	2.7
Maryland	19	1	156	0	7	183	8.3
Montserrado	2	0	21	0	16	39	1.7
Nimba	26	53	186	0	23	288	7.5
River Gee	19	13	44	1	27	104	44.3
Rivercess	0	0	3	0	6	9	13.1
Sinoe	6	1	17	0	52	76	70.0
<b>Liberia</b>	<b>142</b>	<b>130</b>	<b>596</b>	<b>2</b>	<b>293</b>	<b>1163</b>	<b>11.3</b>
Target Achieved	≥2		Below Target		<2		



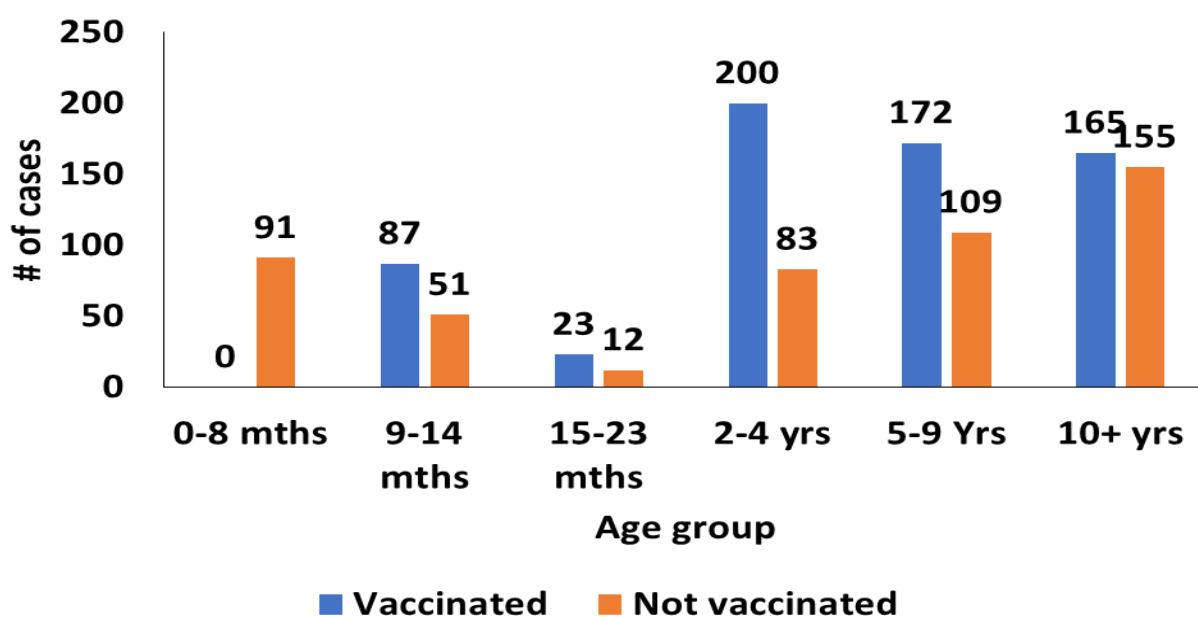
**Figure 2: Distribution of Measles Cases by Reporting Week and Epi-classification, Liberia, Week 1-25, 2024**

**Table 3: Distribution and Vaccination Status of Measles Cases, Liberia, Epi-week 25, 2024**

County	# of cases Vaccinated		Number of Doses Received		
			One Dose	Two Doses	Doses Not Indicated
Bong	1	1	1	0	0
Gbarpolu	1	1	1	0	0
Grand Gedeh	3	1	0	1	0
Lofa	1	1	0	1	0
Maryland	8	4	3	1	0
Montserrado	2	1	0	1	0
Nimba	5	3	2	1	0
River Gee	3	1	1	0	0
Sinoe	1	1	1	0	0
<b>Total</b>	<b>25</b>	<b>14</b>	<b>9</b>	<b>5</b>	<b>0</b>



**Figure 3: Suspected Measles Cases by Age group and Sex, Liberia Epi-week 25, 2024**



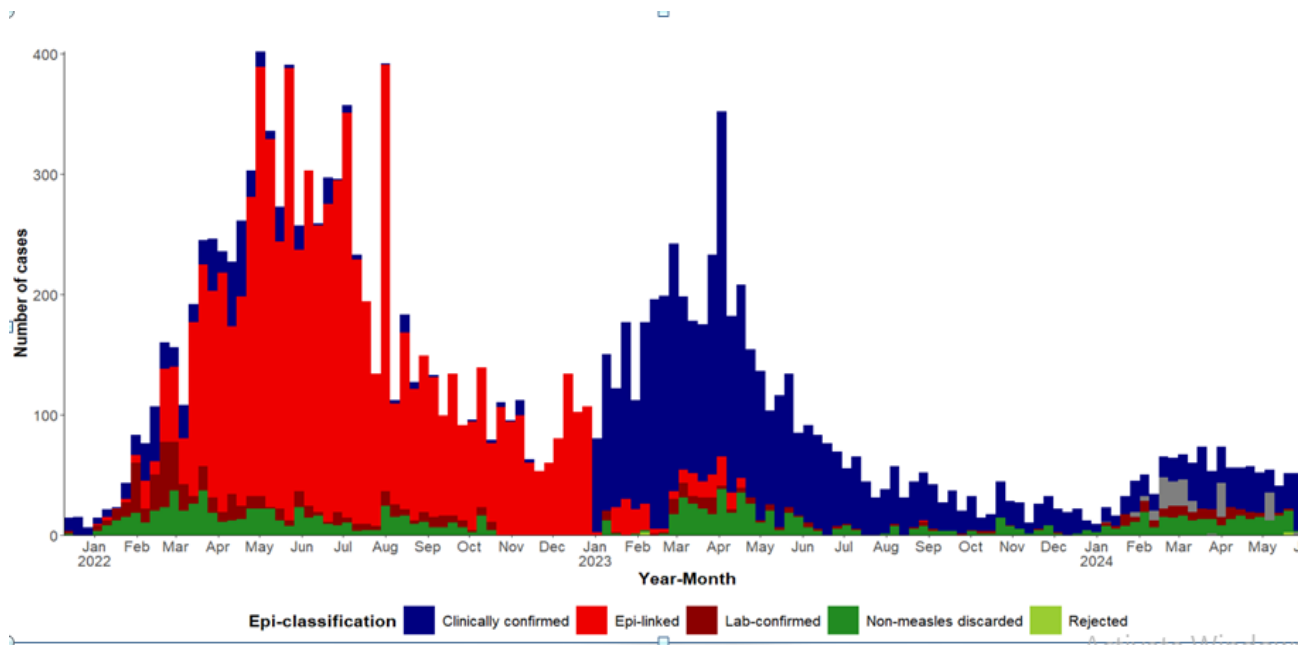
**Figure 4: Suspected Measles Cases by Age Group and Vaccination Status, Liberia, Epi-Week 25, 2024**

**Table 4: Status of Confirmed Measles Cases by County, Liberia, December 13, 2021 - June 23, 2024**

County	Total Cases	Active	Recovery	Deaths	# of Districts
Montserrado	5,373	0	5,304	69	0/7
Nimba	1,296	3	1,289	4	4/6
Grand Bassa	924	0	917	7	0/8
Margibi	803	0	802	1	0/4
Bong	578	0	575	3	0/9
Maryland	1,301	6	1295	0	3/6
Lofa	292	0	292	0	0/6
Grand Kru	1,095	0	1093	2	3/5
Grand Cape Mount	187	0	184	3	0/5
Bomi	147	0	142	5	0/4
Rivercess	84	0	83	1	0/6
Gbarpolu	60	1	59	0	1/5
Grand Gedeh	603	0	603	0	1/6
River Gee	133	0	133	0	2/6
Sinoe	247	0	247	0	0/10
<b>Total</b>	<b>13,123</b>	<b>10</b>	<b>13,018</b>	<b>95</b>	<b>14/98</b>

**Table 5: Status of Confirmed (lab, clinically confirmed, and epi-linked) Measles Cases by County, Liberia**

COUNTY	CUMULATIVE SUSPECTED CASES	CUMULATIVE CONFIRMED CASES	CLASSIFICATION OF CONFIRMED CASES			CLASSIFICATION OF CONFIRMED DEATHS			CUMULATIVE DEATHS	CFR (%)	# CONFIRMED MED CASES WEEK 24	# CONFIRMED CASES WEEK 25	Outbreak Status
			Lab confirmed	Epi Linked	Clinically Compatible	Lab confirmed	Epi Linked	Clinically Compatible					
Montserrado	5,456	5,373	148	1658	3,567	3	61	5	69	1.3	0	0	Ended
Nimba	1,321	1,296	59	313	924	0	1	3	4	0.4	12	3	Ongoing
Margibi	827	803	37	136	630	0	0	1	1	0.1	0	0	Ended
Grand Bassa	962	924	41	212	671	1	0	6	7	0.9	0	0	Ended
Lofa	361	292	35	66	191	0	0	0	0	0	0	0	Ended
Bong	603	578	25	21	532	0	1	2	3	0.5	0	0	Ended
Maryland	1310	1301	33	379	890	0	0	0	0	0	2	6	Ongoing
Grand Gedeh	753	603	83	120	400	0	0	0	0	0	2	0	Ongoing
Sinoe	302	247	48	88	111	0	0	0	0	0	0	0	Ended
Bomi	183	147	37	27	83	1	2	2	5	3	0	0	Ended
Grand Cape Mt	215	187	23	18	146	0	2	1	3	1.6	0	0	Ended
Grand Kru	1126	1,095	56	199	840	0	0	2	2	0.2	0	0	Ongoing
Gbarpolu	80	60	7	3	50	0	0	0	0	0	0	1	Ongoing
Rivercess	112	84	26	54	4	0	1	0	1	1.1	0	0	Ended
River Gee	166	133	33	50	50	0	0	0	0	0	4	0	Ongoing
<b>Total</b>	<b>13,777</b>	<b>13,123</b>	<b>691</b>	<b>3,343</b>	<b>9,089</b>	<b>5</b>	<b>68</b>	<b>22</b>	<b>95</b>	<b>7.8</b>	<b>20</b>	<b>10</b>	



**Figure 5: Epi-curve of Measles Cases by Epi-classification, Liberia, 13 December 2021 – 23 June 2024**

**PUBLIC HEALTH RESPONSE**

**I. Coordination**

- The response has been led by the County Health Teams with technical support from the National Public Health Institute of Liberia (NPHIL), the Ministry of Health (MOH) and partners (UNICEF and WHO in Grand Gedeh County).
- IMS meetings are being held for coordination and mobilization of resources in affected Counties.
- Latest coordination meeting was held on June 5, 2024 (Grand Kru)



During the IMS meeting on June 4, 2024 in Grand Gedeh County

**II. Epidemiological Surveillance**

- Active case search in affected and surrounding communities ongoing in Grand Kru County.
- Situational reports have been developed and disseminated to stakeholders (Grand Kru and Grand Gedeh) counties.
- Investigation of all rumors and alerts reported from the community ongoing in Grand Kru County
- Risk assessment conducted on all contacts on May 30, 2024 (Grand Gedeh)
- Total of 23 contacts line listed as high and low risk (Grand Gedeh)

**III. Case management**

- Case management ongoing in affected counties

**IV. Immunization**

- Routine immunization ongoing across the country

## V. Infection Prevention and Control (IPC)

- Reinforcement of hand washing in the affected communities (Grand Kru)
- Distribution of IPC supplies such as gloves, nose masks, and hand sanitizers to responders (Grand Kru).

## VI. Laboratory

- The National Public Health Reference Laboratory continues testing of Measles samples
- Eight samples were collected and 7 confirmed positive, while one was tested negative from Grand Gedeh County.
- A total of Six hundred ninety-one (691) cases have been confirmed by the NPHRL from December 13, 2021 – June 25, 2024.

## VII. Risk Communication and Community Engagement

- Continual community advocacy meetings with local leaders and family members in the affected communities (Grand Kru and Grand Gedeh).
- Awareness and health education are ongoing on the spread and prevention of Measles at health facility and community levels in Grand Gedeh and Grand Kru Counties (Supported by UNICEF in Grand Gedeh County)



Community engagement meeting on measles prevention and control in Putu Jarwodee, June 6, 2024

## Challenges

- Lack of gasoline support for contact tracing, monitoring and active case search (Grand Gedeh and Grand Kru).
- Limited supply of essential medications and medical supplies for case management in affected counties

## Acute Flaccid Paralysis (AFP)

- ☞ Seven (7) cases were reported from Montserrado (3), Maryland (1), Sinoe (1), Grand Cape Mount (1), and Nimba (1) Counties
  - All Specimens were collected and shipped
- ☞ Cumulatively, sixty-four (64) cases have been reported
  - Thirty (30) tested negative, Two (NPENT), 32 pending testing

## Neonatal Tetanus

- ☞ Three (3) cases including one attributable death were reported from Grand Bassa (2), and Nimba (1) Counties
- ☞ Cumulatively, twenty (20) cases have been reported including six (6) deaths



## Influenza-Like Illnesses

### Coronavirus Disease (COVID-19)

- ☞ Zero suspected cases reported
- ☞ Cumulatively, two (2) confirmed cases have been reported

### Influenza

- ☞ Zero cases reported
- ☞ Cumulatively, seventy (70) suspected cases reported
  - Seventy (70) specimens were collected: 65 tested negative, 5 specimens were discarded

## Viral Hemorrhagic Fever

### Lassa fever

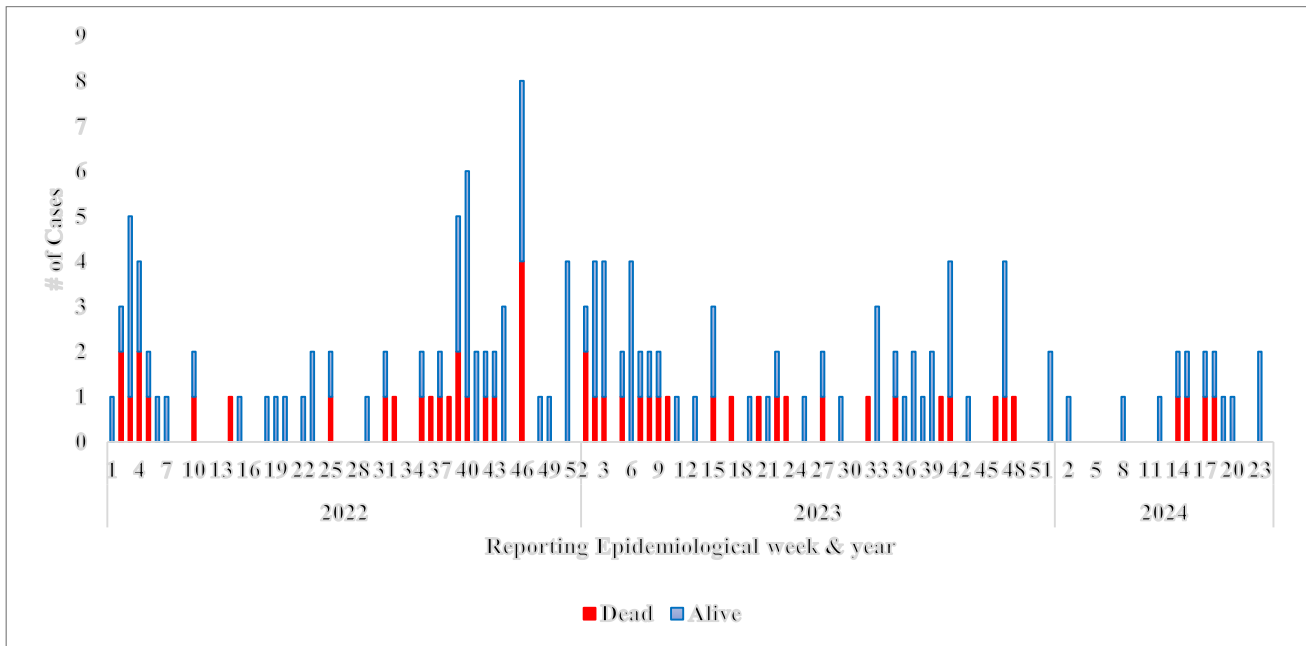
- ☞ Seven (7) suspected cases were reported from Bong (5), Montserrado (1), and Grand Bassa (1) Counties
  - All Specimens were collected and tested negative
- ☞ Cumulatively, one hundred sixteen (116) suspected cases have been reported
  - Proportion of suspected cases with the sample collected (116/116) 100%
  - Proportion of suspected cases with sample tested (112/116) 97%
    - Confirmed 15 including 4 deaths, negative 97 and discarded 4
    - Case fatality rate: (4/15) 27%

### Outbreak:

- ☞ No new confirmed case reported
- ☞ Twenty-seven (27) contacts including 13 healthcare workers (HCWs) line listed and under follow-up
- ☞ A total of 153 confirmed cases including 45 deaths reported
- ☞ Cumulative Case Fatality Rate (CFR): 29% (45/153)
- ☞ Four counties are currently in outbreak

**Table 6: Summary of Lassa fever Outbreak, Liberia, January 6, 2022-June 23, 2024**

County	Outbreak Districts	Outbreak Start Date	Total suspected	Total confirmed	HCWs confirmed	Total Deaths	Deaths in HCWs	CFR %	Total Contacts	# HCW contacts	Contacts_ became cases	Contacts under follow up	Contacts completed	Days in countdown	Outbreak Status
Montserrado	Bushrod	13-Feb-23	17	1	0	0	0	0%	29	21	0	0	29	Completed	Ended
	Central Monro	27-Nov-23	1	2	0	1	0	50%	49	0	0	0	49	Completed	Ended
	Central Monro	3-Mar-23	38	2	0	1	0	50%	28	27	0	0	28	Completed	Ended
	Bushrod	30-Apr-24	2	1	0	0	0	0%	14	6	0	0	14	Completed	Ended
Bong	Suakoko	21-Apr-23	192	54	18	13	2	24%	496	114	6	0	417	Completed	Ended
	Jorquelleh	15-Oct-23	14	6	3	1	1	17%	121	86	3	0	169	Completed	Ended
	Kokoyah	6-Jun-24	3	1	0	0	0	0%	8	0	0	8	0	Active	Ongoing
	Suakoko	23-Feb-24	29	3	0	0	0	0%	29	14	0	0	29	Completed	Ended
	Salala	8-Mar-24	2	2	0	1	0	50%	21	0	0	0	21	Completed	Ended
	Jorquelleh	11-Apr-24	3	2	0	1	0	0%	41	30	0	19	22	Active	Ongoing
Grand Bassa	District 3A&B	21-Aug-23	87	44	0	10	0	23%	177	40	40	0	159	Completed	Ended
	Buchanan	11-Aug-23	2	1	0	1	0	100%	4	2	0	0	4	Completed	Ended
	District 3A&B	30-Apr-24	6	3	0	1	0	33%	12	3	0	0	12	Completed	Countdown
Nimba	Saclepea-Mah	21-Nov-23	4	2	0	1	0	50%	5	0	0	0	5	Completed	Ended
	Sanniquellie-Mah	6-Feb-23	42	15	0	6	0	40%	43	35	8	0	43	Completed	Ended
	Tappita	20-Nov-23	12	5	0	3	0	60%	88	39	4	0	77	Completed	Ended
	Bain-Garr	1-Jun-23	24	6	0	3	0	50%	61	25	0	0	31	Completed	Ended
	Bain-Garr	15-Apr-24	5	2	0	1	0	50%	25	7	0	0	25	Completed	Ended
River Gee	Putupo	25-Nov-22	2	1	0	1	0	100%	14	0	0	0	14	Completed	Ended
<b>Total</b>			<b>485</b>	<b>153</b>	<b>21</b>	<b>45</b>	<b>3</b>	<b>29%</b>	<b>1265</b>	<b>449</b>	<b>61</b>	<b>27</b>	<b>1148</b>		



**Figure 6: Epi-curve of Confirmed Lassa fever cases, Liberia, January 6, 2022- June 23, 2024**

## Public Health Measures

### I. Coordination

- The National Public Health Institute of Liberia (NPHIL) and the Ministry of Health (MOH) are providing technical support to the surveillance team with support from partners

### II. Surveillance

- Active case search ongoing in affected communities and districts
- Twenty-seven (27) contacts line listed and under 21 days follow up
- Weekly sit-reps developed and disseminated to stakeholders

### III. Laboratory

- The National Public Health Reference Laboratory continues testing of Lassa fever samples
- A total of 153 Lassa fever cases have been confirmed since this outbreak

### IV. Case management and IPC

- Ribavirin supply in the country is being distributed for treatment of Lf cases to affected counties
- The 2 confirmed cases at Phebe Hospital were treatment with ribavirin and discharged
- There is no confirmed case currently in isolation

## Challenges

- Limited supply of IPC materials in affected counties
- Limited logistics (gasoline, communication cards, fuel, etc.) to support active case search and contact tracing in the affected counties
- Lack of stationeries in EOC to produce case alert forms, contact tracing form and others tools for investigations (Bong County)
- Lack of computer for County Surveillance Officer (Bong County)

## Yellow Fever

- ☞ One (1) suspected case reported from Grand Gedeh County
  - Specimen was collected and pending testing
- ☞ Cumulatively, fifty-three (53) cases have been reported
  - Proportion of suspected cases with samples collected (50/53) 94%, however, 3 samples pending testing, 1 rejected
  - Proportion of suspected cases with samples tested (46/50) 94% (negative 45) (1 indeterminate)



## Dengue

- Zero suspected cases reported
- Cumulatively, four (4) suspected cases were reported

## Ebola Virus Disease

- Zero cases reported

## Diarrheal Diseases

### Acute Bloody Diarrhea (Suspected Shigellosis)

- Six (6) cases were reported from Margibi, Grand Gedeh, Gbarpolu, Sinoe, Grand Cape Mount, and Lofa Counties
  - All Specimens were collected: and pending testing
- Cumulatively, two hundred twenty-five (225) cases have been reported
  - 128 specimens were collected, 101 reached the Lab
  - 82 tested negative, 7 rejected
  - 4 confirmed (*S. flexneri* & *S. sonnei*)
  - 8 pending testing

### Severe Acute Watery Diarrhea (Suspected Cholera)

- Three (3) cases were reported from Rivercess, Grand Bassa, and Nimba Counties
  - Two Specimens were collected: and pending testing
- Cumulatively, one hundred fifty-six (156) cases have been reported
  - 91 specimens collected, 62 reached the Lab
  - 46 tested negatives, 10 rejected and 6 pending testing

## Other Reportable Diseases

### Animal bite (Human Exposure to Rabies) Other Reportable Diseases

#### Animal bite (Human Exposure to Rabies)

- Fifty-nine (59) animal bite cases were reported from Montserrado (15), Nimba (9), Margibi (6), Grand Gedeh (6), Bong (5), Grand Bassa (5), Sinoe (4), Grand Cape Mount (3), Maryland (2), Rivercess (2), Grand Kru (1), and Lofa (1) Counties
- All bites were attributed to dog
- Proportion of cases investigated: 28/59 (47%)
- Proportion of dogs vaccinated: 0/59 (0%)
- Cumulatively, 1,541 cases have been reported
- including 2 suspected deaths

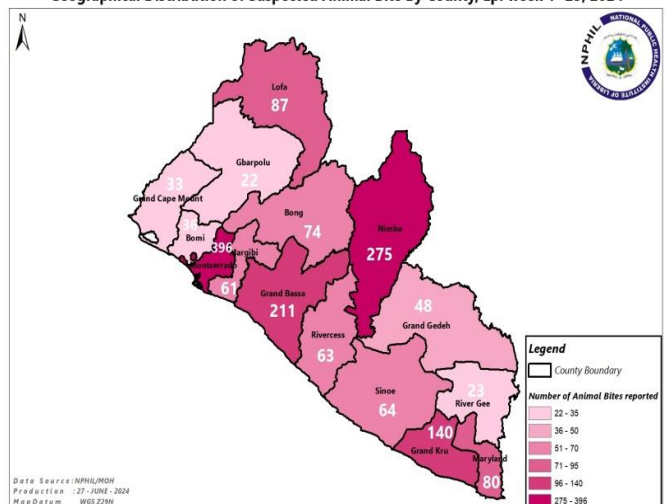
#### Public Health Actions

- All cases were clinically managed and discharged
- PEP Administered to 11 persons (19%): Montserrado (8), and Bong (3) Counties
- PEP supplied to Grand Bassa, Nimba, Montserrado and Sinoe counties

## Meningitis

- Zero cases were reported
- Cumulatively, seventeen (17) suspected cases have been reported
  - Proportion of specimen collected (15/17) 88%, 2 specimens not collected
  - Proportion of specimens tested (15/15) 100% (14 negative, 1 positive)

Geographical Distribution of Suspected Animal Bite By County, Epi week 1- 25, 2024



## Mpox

- ☞ One case was reported from Nimba
  - One specimen was collected and pending testing
- ☞ Cumulatively, forty-five (45) suspected cases have been reported with 38 samples collected, and 35 tested of which, 5 confirmed positive, 30 negative, 1 rejected, 1 pending testing and 1 discarded

## **Outbreak**

- ☞ No new confirmed case reported
- ☞ A total of 20 contacts are being followed up for 21 days
- ☞ Cumulatively 2 cases (1 positive, 1 suspected) have been reported since the beginning of the outbreak

## **Public Health Measure**

### **I. Coordination**

- Coordination is ongoing at county and district levels

### **II. Epi-surveillance**

- Twenty (20) contacts are being daily monitoring
- Active case search is ongoing in the affected communities and its surroundings

### **III. Risk Communication & Community Engagement**

- Awareness and health education on the spread and prevention of the disease in the affected communities and its surroundings are ongoing

### **IV. Infection Prevention and Control (IPC)**

- Reinforced hand washing in the affected community

### **V. Case Management**

- Treatment of confirmed case is in progress

### **VI. Planned Activities**

- Monitor contacts daily for signs and symptoms of Mpox

## **Challenges**

- No gasoline support to intensify response activities
- No feeding support for patients at the treatment units

## Unexplained cluster of deaths

- ☞ Zero cases reported

## An Unexplained Cluster of Health Events

- ☞ Zero cases reported

## **Other Events of Public Health Importance**

### Maternal Mortality

- ☞ Thirteen (13) deaths were reported from Montserrado (6), Grand Bassa (2), Nimba (2), Grand Kru (1), Maryland (1), and Grand Cape Mount (1) Counties
  - ☞ Reported causes: Postpartum Hemorrhage (6), Eclampsia (4), Sepsis (2) and Cephalopelvic
  - ☞ Reporting sites:
    - Health facility (13/13) 100%
- ☞ Cumulatively, one hundred fifty-two (152) deaths reported
  - Proportion of deaths reviewed (49/152) 32%

## Neonatal Mortality

- ☞ Twenty-five (25) deaths were reported from Montserrado (19), Maryland (2), Grand Kru (1), Nimba (1), Grand Gedeh (1), and Sinoe (1) Counties
- ☞ Reported causes: Birth Asphyxia (12), Sepsis (7), Prematurity (3), Neonatal tetanus (1), and Pending Investigation (2)
- ☞ Reported sites:
  - Health facility (24/24) 100 %
- ☞ Cumulatively, four hundred twenty-six (426) deaths reported
  - Proportion of deaths reviewed (116/426) 27%

## Adverse Events Following Immunization (AEFI)/Adverse Drug Reaction (ADR)

- ☞ Fifteen (15) cases were reported from Sinoe (8), Grand Gedeh (3), Bomi (2), Grand Bassa (1), and Grand Cape Mount (1) Counties
- ☞ All were classified as non-serious
- ☞ Related vaccine:
  - Penta (8/15) 53%
  - nOPV2 (2/15) 13%
  - Pneumo (2/15) 13%
  - Others (3/15) 20%
- ☞ Cumulatively, five hundred ninety-two (592) events were reported and all were classified as non-serious.

## Neglected Tropical Diseases

### YAWS

- ☞ Zero cases were reported

### Buruli Ulcer

- ☞ Zero cases were reported

## Border Surveillance Update

A total of 5592 travelers were recorded from eight (8) designated out of Forty-five (45) official POEs with incoming travelers accounting for 53% (2724/5134)

**Table 7: Border activity at the PoE for incoming and outgoing travelers, Liberia, Epi week 25**

Type of Ports	Point of Entry	Weekly total	Arrival	Departure	Total travelers with YB	Yellow Book Damage	Card Replaced	Vaccinated against YF & Issued	Alerts detected/ Verified
Airport	James S. Paynes	33	13	20	5	0	0	0	0
	Robert Int'l Airport	3900	2080	1820	3845	1	55	0	0
Seaport	Freeport of Monrovia	176	88	88	176	0	0	0	0
	Buchanan Port	86	43	43	86	0	0	0	0
Ground Crossing	Bo Water Side	475	256	219	448	0	6	21	0
	Ganta	74	43	31	64	0	0	0	0
	Yekepa	38	23	15	9	0	0	0	0
	Loguatu	352	178	174	341	0	0	0	0
<b>Total</b>		<b>5,134</b>	<b>2,724</b>	<b>2,410</b>	<b>4,974</b>	<b>1</b>	<b>61</b>	<b>21</b>	<b>0</b>

**Note: Yellow book issue for both arrival and departure; Vaccination coverage for both arrival and departure**

## Public Health Measures

### National level

---

- ▣ Providing remote technical and operational support to counties
- ▣ Produced and disseminated situation reports (Lassa fever, Measles, and Mpox outbreaks)
- ▣ Produced and disseminated weekly bulletin

### County-level

#### ▣ Surveillance

- ▣ Publication of situational reports
- ▣ Active case search ongoing in affected and surrounding communities

#### ▣ Case Management

- Administration of PEP
- Management of measles and Lassa fever cases ongoing in affected counties

**Appendix**

**Summary of Immediately Reportable Diseases, Conditions, and Events by County**

		Bomi	Bong	Gbarpolu	Grand Bassa	Grand Cape Mount	Grand Gedeh	Grand Kru	Lofa	Margibi	Maryland	Montserrado	Nimba	Rivercess	River Gee	Sinoe	Total Weekly	Cumulative Reported	Cumulative Lab-confirmed	
<b>No. of Expected Health District</b>		4	9	5	8	5	6	5	6	4	6	7	11	6	6	10	98			
<b>No. of Health District Reported</b>		4	9	5	8	5	6	5	6	4	6	7	11	6	6	10	98			
<b>Vaccine Preventable Diseases</b>	Acute Flaccid Paralysis (Suspected Polio)	A	0	0	0	1	0	0	0	0	1	3	1	0	0	1	7	49	0	
		D	0	0	0	0	0	0	0	0	0	0	0	0	0	0	0	0	0	0
	Measles	A	0	1	1	0	0	3	0	1	0	8	2	5	0	3	1	25	1,111	50
		D	0	0	0	0	0	0	0	0	0	0	0	0	0	0	0	0	0	0
	Neonatal Tetanus	A	0	0	0	2	0	0	0	0	0	0	0	1	0	0	0	3	15	0
		D	0	0	0	0	0	0	0	0	0	0	0	0	0	0	0	0	5	0
	Yellow fever	A	0	0	0	0	0	1	0	0	0	0	0	0	0	0	0	1	49	0
		D	0	0	0	0	0	0	0	0	0	0	0	0	0	0	0	0	0	0
<b>Viral Hemorrhagic Febrile Diseases</b>	Dengue fever	A	0	0	0	0	0	0	0	0	0	0	0	0	0	0	0	0	3	0
		D	0	0	0	0	0	0	0	0	0	0	0	0	0	0	0	0	0	0
	Ebola Virus Disease	A	0	0	0	0	0	0	0	0	0	0	0	0	0	0	0	0	0	0
		D	0	0	0	0	0	0	0	0	0	0	0	0	0	0	0	0	0	0
	Lassa fever	A	0	5	0	1	0	0	0	0	0	1	0	0	0	0	0	7	100	2
		D	0	0	0	0	0	0	0	0	0	0	0	0	0	0	0	0	4	0
<b>Influenza-Like Illnesses</b>	COVID-19	A	0	0	0	0	0	0	0	0	0	0	0	0	0	0	0	0	2	2
		D	0	0	0	0	0	0	0	0	0	0	0	0	0	0	0	0	0	0
	Influenza Like Illnesses	A	0	0	0	0	0	0	0	0	0	0	0	0	0	0	0	0	70	0
		D	0	0	0	0	0	0	0	0	0	0	0	0	0	0	0	0	0	0
<b>Diarrheal Diseases</b>	Acute Bloody Diarrhoea (Shigellosis)	A	0	0	1	0	1	1	0	1	1	0	0	0	0	0	1	6	201	0
		D	0	0	0	0	0	0	0	0	0	0	0	0	0	0	0	0	0	0
	Severe Acute Watery Diarrhoea (Cholera)	A	0	0	0	1	0	0	0	0	0	0	1	1	0	0	0	3	142	0
		D	0	0	0	0	0	0	0	0	0	0	0	0	0	0	0	0	0	0
<b>Events of Public Health Interest</b>	Maternal Mortality	D	0	0	0	2	1	0	1	0	0	1	6	2	0	0	0	13	131	
	Neonatal Mortality	D	0	0	0	0	0	1	1	0	0	2	19	1	0	0	1	25	383	
	AEFI	A	2	0	0	1	1	3	0	0	0	0	0	0	0	0	8	15	549	0
		D	0	0	0	0	0	0	0	0	0	0	0	0	0	0	0	0	0	0
	Unexplained Cluster of Health Events/Disease	A	0	0	0	0	0	0	0	0	0	0	0	0	0	0	0	0	0	0
D		0	0	0	0	0	0	0	0	0	0	0	0	0	0	0	0	0	0	
<b>Other Reportable Diseases</b>	Mpox	A	0	0	0	0	0	0	0	0	0	0	1	0	0	0	1	45	2	
		D	0	0	0	0	0	0	0	0	0	0	0	0	0	0	0	0	0	0
	Tuberculosis	A	0	0	0	0	0	0	0	0	0	0	0	0	0	0	0	0	20	0
		D	0	0	0	0	0	0	0	0	0	0	0	0	0	0	0	0	0	0
	Human Exposure to Rabies (Suspected Human)	A	0	5	0	5	3	6	1	1	6	2	15	9	2	0	4	59	1,416	0
		D	0	0	0	0	0	0	0	0	0	0	0	0	0	0	0	0	1	0
	Meningitis	A	0	0	0	0	0	0	0	0	0	0	0	0	0	0	0	0	17	1
		D	0	0	0	0	0	0	0	0	0	0	0	0	0	0	0	0	0	0
Unexplained Cluster of deaths	A	0	0	0	0	0	0	0	0	0	0	0	0	0	0	0	0	0	0	
	D	0	0	0	0	0	0	0	0	0	0	0	0	0	0	0	0	0	0	
<b>Neglected Tropical Diseases</b>	Buruli Ulcer	A	0	0	0	0	0	0	0	0	0	0	0	0	0	0	0	0	0	0
		D	0	0	0	0	0	0	0	0	0	0	0	0	0	0	0	0	0	0
	Yaws	A	0	0	0	0	0	0	0	0	0	0	0	0	0	0	0	0	0	0
		D	0	0	0	0	0	0	0	0	0	0	0	0	0	0	0	0	0	0
<b>TOTAL</b>		2	11	2	12	0	15	0	3	0	14	0	21	0	3	16	165	4313	7	

D= Dead; A= Alive

## Notes

- ☞ **Completeness** refers to the proportion of expected weekly IDSR reports received (target:  $\geq 80\%$ )
- ☞ **Timeliness** refers to the proportion of expected weekly IDSR reports received by the next level on time (target:  $\geq 80\%$ ). The time requirement for weekly IDSR reports:
  - Health facility - required on or before 5:00 pm every Saturday to the district level
  - Health district - required on or before 5:00 pm every Sunday to the county level
  - County - required on or before 5:00 pm every Monday to the national level
- ☞ **Non-polio AFP rate** is the proportion of non-polio AFP cases per 100,000 among the estimated population under 15 years of age in 2017 (annual target:  $\geq 2/100,000$ )
- ☞ **Non-measles febrile rash illness rate** refers to the proportion of Negative measles cases per 100,000 population
- ☞ **Annualized maternal mortality rate** refers to the maternal mortality rate of a given period of less than one year and it is the number of maternal deaths per 100,000 live births
- ☞ **Annualized neonatal mortality rate** refers to the neonatal mortality ratio of a given period of less than one year and it is the number of neonatal deaths per 1,000 live births
- ☞ **Epi-linked** refers to any suspected case that has not had a specimen taken for serologic confirmation but is linked to a laboratory-confirmed case
- ☞ **Confirmed case** refers to a case whose specimen has been tested positive or reactive upon laboratory testing, or has been classified as confirmed by either epidemiologic linkage with a confirmed case or clinical compatibility with the disease or condition

Epidemiological bulletin published with support from WHO and CDC

### For comments or questions, please contact

Ralph W. Jetoh, MD, MPH

**Director**

Infectious Disease and Epidemiology Division

National Public Health Institute of Liberia

Republic of Liberia

Email: [ralphica2000@gmail.com](mailto:ralphica2000@gmail.com)

Phone: +231 886526388/777372655

Website: [www.nphil.gov.lr](http://www.nphil.gov.lr)

## National Public Health Institute of Liberia (NPHIL)

### MISSION

To prevent and control public health threats by promoting healthy outcomes and serving as a source of knowledge

### VISION

A center of excellence to create health outcomes for Liberians through a strong preventive health system and expertise

## EDITORIAL TEAM

### DIDE / NPHIL

A. N. Mianah  
T. O. Yeabah  
J. S. Kokro  
M.G. Jeuronlon  
E. Dwalu  
A.B. Corvah  
G. B. Williams  
S. K. Zayzay  
L. W. Colee  
M. Tegli  
T. L. Hall  
S. L. Flomo  
M. S. Quiah  
J. O. Abel  
P. J. Thomas  
H. M. Sherman  
M.D. Vaye  
N. K. Dovillie  
A. Coker  
S. Nuwolo  
M. Gbeyeah  
B. Adeyemi  
H. Howard-Bridges  
Ministry of Health  
WHO Liberia Office  
US CDC Liberia Office  
AFENET-Liberia Office

### Data sources

Data and information is provided by the fifteen County Surveillance Officers and National Public Health Reference Laboratory via regular weekly reports, telephone calls and email exchanges. Situations are evolving and dynamic therefore numbers stated are subject to change.