



Liberia IDSR Epidemiology Bulletin

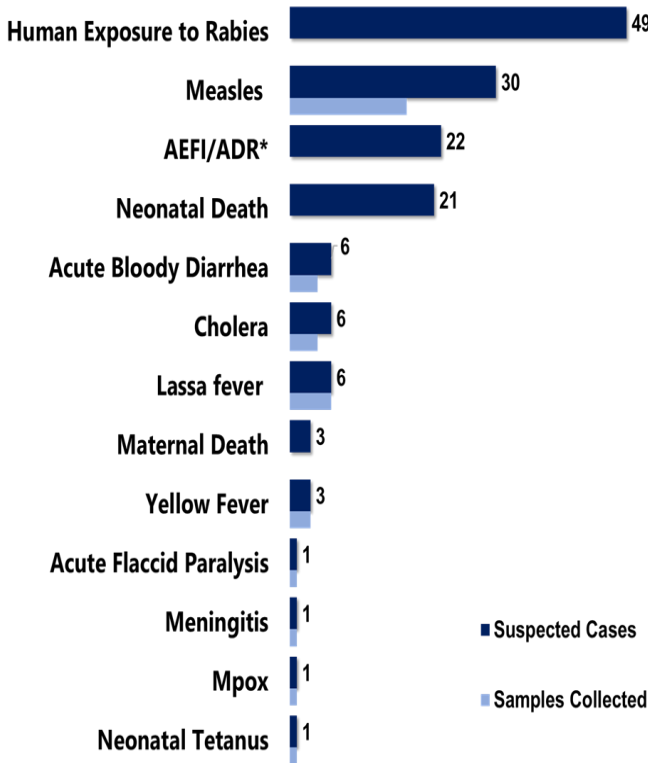
Epi-week 23 (June 3- 9 2024)

Country Population: 5,104,413 || Volume 20 Issue 23 || June 3 – 9, 2024

|| Data Source: CSOs from 15 Counties and Laboratory

Highlights

Figure 1: Public Health Events Reported



Keynotes and Events of Public Health Significance

- ◆ **A total of 150 events** of public health importance including **25 deaths** reported
- ◆ **Completeness and Timeliness** of health facility reports were both **85%**
- ◆ **Ongoing Lassa fever outbreak** in **four** Counties
- ◆ **Ongoing Measles outbreak** in **eight** Counties
- ◆ **Ongoing Mpox outbreak** in **Grand Kru County**

Reporting Coverage

Table 1: Health Facility Weekly IDSR Reporting Coverage, Liberia, Epi-week 23, 2024

| County | Expected Reports from HF* | Reports Received | Received on Time | Completeness (%) | Timeliness (%) |
|------------------|---------------------------|------------------|------------------|------------------|----------------|
| Bomi | 29 | 29 | 29 | 100 | 100 |
| Bong | 63 | 46 | 46 | 73 | 73 |
| Gbarpolu | 18 | 18 | 18 | 100 | 100 |
| Grand Bassa | 38 | 37 | 37 | 97 | 97 |
| Grand Cape Mount | 36 | 36 | 36 | 100 | 100 |
| Grand Gedeh | 25 | 25 | 25 | 100 | 100 |
| Grand Kru | 25 | 25 | 25 | 100 | 100 |
| Lofa | 60 | 60 | 60 | 100 | 100 |
| Margibi | 73 | 73 | 73 | 100 | 100 |
| Maryland | 28 | 26 | 26 | 93 | 93 |
| Montserrado | 391 | 264 | 264 | 68 | 68 |
| Nimba | 102 | 102 | 102 | 98 | 98 |
| Rivercess | 21 | 21 | 21 | 100 | 100 |
| River Gee | 21 | 21 | 21 | 100 | 100 |
| Sinoe | 41 | 41 | 41 | 100 | 88 |
| Liberia | 971 | 824 | 824 | 85 | 85 |

824 (85%)
Health facilities reported IDSR data

98(98%)
Health districts reported IDSR data

824(85%)
Health facilities reported timely IDSR

- ◆ The national target for weekly IDSR reporting is 80%. Two counties Nimba and Maryland reported late. Health facility timeliness is monitored at the health district level

Legend:



Vaccine-Preventable Diseases

Measles

- ☞ Thirty (30) suspected cases were reported (see table below)
 - Seventeen (17) specimens were collected and all pending testing
 - The proportion of suspected cases vaccinated (16/30) 53%
- ☞ Cumulatively, one thousand one hundred eleven (1111) cases reported
 - Proportion of suspected cases with sample collected (492/1111) 44%
 - Proportion of suspected cases with sample tested (369/492) 75% (negative 251, confirmed 118)
 - Proportion of negative Measles cases tested for Rubella (237/251) 94% (negative 216, confirmed 21)

Table 2: Distribution and Vaccination Status of Measles Cases, Liberia, Epi-week 23, 2024

| County | # of cases | Number of Doses Received | | | |
|------------------|------------|--------------------------|------------------|-----------|---------------------|
| | | Vaccinated | One Dose | Two Doses | Doses Not Indicated |
| Gbarpolu | 4 | 4 | 4 | 0 | 0 |
| Grand Cape Mount | 2 | 2 | 2 | 0 | 0 |
| Grand Gedeh | 4 | 0 | 0 | 0 | 0 |
| Grand Kru | 1 | 0 | 0 | 0 | 0 |
| Lofa | 1 | 1 | 1 | 0 | 0 |
| Margibi | 2 | 2 | 2 | 0 | 0 |
| Maryland | 2 | 1 | 0 | 1 | 0 |
| Montserrat | 1 | 1 | 0 | 1 | 0 |
| Nimba | 10 | 3 | 3 | 0 | 0 |
| Rivercess | 1 | 1 | 1 | 0 | 0 |
| Sinoe | 2 | 1 | 0 | 1 | 0 |
| Total | 30 | 16 (53%) | 13 (81.3) | 3 | 0 |

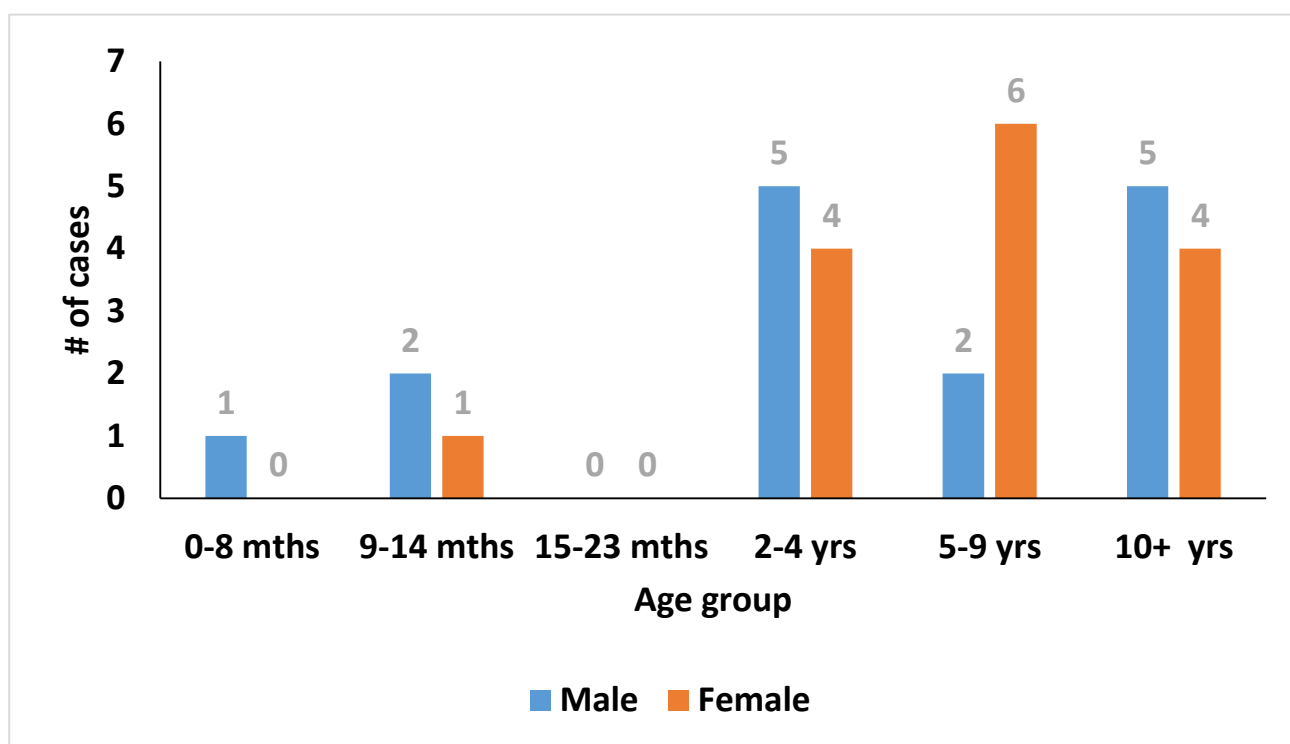


Figure 2: Suspected Measles Cases by Age group and Sex, Liberia Epi week 23, 2024

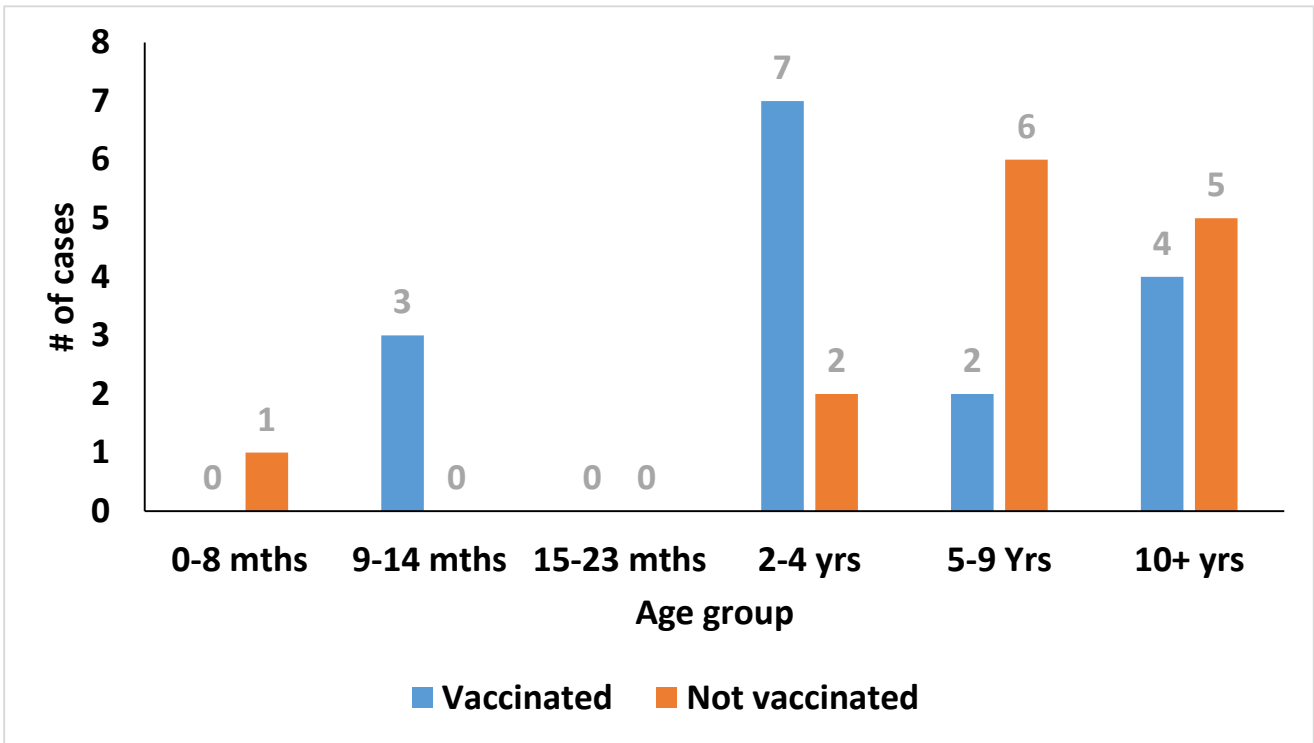


Figure 3: Suspected Measles Cases by Age Group and Vaccination Status, Liberia, Epi-Week 23, 2024

Table 3: Status of Confirmed (lab, clinically confirmed, and epi-linked) Measles Cases by County, Liberia, December 13, 2021-June 9, 2023

| COUNTY | CUMULATIVE SUSPECTED CASES | CUMULATIVE CONFIRMED CASES | CLASSIFICATION OF CONFIRMED CASES | | | CLASSIFICATION OF CONFIRMED DEATHS | | | CUMULATIVE DEATHS | CFR (%) | # CONFIRMED CASES WEEK 22 | # CONFIRMED CASES WEEK 23 | Outbreak Status |
|--------------|----------------------------|----------------------------|-----------------------------------|--------------|-----------------------|------------------------------------|------------|-----------------------|-------------------|------------|---------------------------|---------------------------|-----------------|
| | | | Lab confirmed | Epi Linked | Clinically Compatible | Lab confirmed | Epi Linked | Clinically Compatible | | | | | |
| Montserrado | 5,456 | 5,373 | 148 | 1658 | 3,567 | 3 | 61 | 5 | 69 | 1.3 | 0 | 0 | Ended |
| Nimba | 1,306 | 1,281 | 59 | 298 | 924 | 0 | 1 | 3 | 4 | 0.4 | 13 | 7 | Ongoing |
| Margibi | 827 | 803 | 37 | 136 | 630 | 0 | 0 | 1 | 1 | 0.1 | 0 | 0 | Ended |
| Grand Bassa | 962 | 924 | 41 | 212 | 671 | 1 | 0 | 6 | 7 | 0.9 | 0 | 0 | Ended |
| Lofa | 361 | 292 | 35 | 66 | 191 | 0 | 0 | 0 | 0 | 0 | 0 | 0 | Ongoing |
| Bong | 603 | 578 | 25 | 21 | 532 | 0 | 1 | 2 | 3 | 0.5 | 0 | 0 | Ended |
| Maryland | 1302 | 1293 | 33 | 370 | 890 | 0 | 0 | 0 | 0 | 0 | 4 | 2 | Ongoing |
| Grand Gedeh | 741 | 591 | 65 | 126 | 400 | 0 | 0 | 0 | 0 | 0 | 7 | 2 | Ongoing |
| Sinoe | 302 | 247 | 48 | 88 | 111 | 0 | 0 | 0 | 0 | 0 | 3 | 0 | Ongoing |
| Bomi | 183 | 147 | 37 | 27 | 83 | 1 | 2 | 2 | 5 | 3 | 0 | 0 | Ended |
| Grd Cape Mt | 215 | 187 | 23 | 18 | 146 | 0 | 2 | 1 | 3 | 1.6 | 0 | 0 | Ended |
| Grand Kru | 1121 | 1,090 | 51 | 199 | 840 | 0 | 0 | 2 | 2 | 0.2 | 4 | 1 | Ongoing |
| Gbarpolu | 77 | 57 | 5 | 2 | 50 | 0 | 0 | 0 | 0 | 0 | 0 | 4 | Ongoing |
| Rivercess | 112 | 84 | 26 | 54 | 4 | 0 | 1 | 0 | 1 | 1.1 | 0 | 0 | Ended |
| River Gee | 158 | 125 | 30 | 45 | 50 | 0 | 0 | 0 | 0 | 0 | 4 | 0 | Ongoing |
| Total | 13,726 | 13,072 | 663 | 3,320 | 9,089 | 5 | 68 | 22 | 95 | 7.8 | 35 | 16 | |

Table 4: Status of Confirmed Measles Cases by County, Liberia, December 13, 2021 – April 21, 2024

| County | Total Cases | Active | Recovery | Deaths | # of Districts |
|------------------|---------------|-----------|---------------|-----------|----------------|
| Montserrado | 5,373 | 0 | 5,304 | 69 | 0/7 |
| Nimba | 1,281 | 7 | 1,270 | 4 | 4/6 |
| Grand Bassa | 924 | 0 | 917 | 7 | 0/8 |
| Margibi | 803 | 0 | 802 | 1 | 0/4 |
| Bong | 578 | 0 | 575 | 3 | 0/9 |
| Maryland | 1,293 | 2 | 1291 | 0 | 3/6 |
| Lofa | 292 | 0 | 292 | 0 | 1/6 |
| Grand Kru | 1,090 | 1 | 1087 | 2 | 3/5 |
| Grand Cape Mount | 187 | 0 | 184 | 3 | 0/5 |
| Bomi | 147 | 0 | 142 | 5 | 0/4 |
| Rivercess | 84 | 0 | 83 | 1 | 0/6 |
| Gbarpolu | 58 | 4 | 54 | 0 | 1/5 |
| Grand Gedeh | 591 | 2 | 589 | 0 | 1/6 |
| River Gee | 125 | 0 | 124 | 0 | 1/6 |
| Sinoe | 247 | 0 | 247 | 0 | 2/10 |
| Total | 13,072 | 16 | 12,961 | 95 | 16/98 |

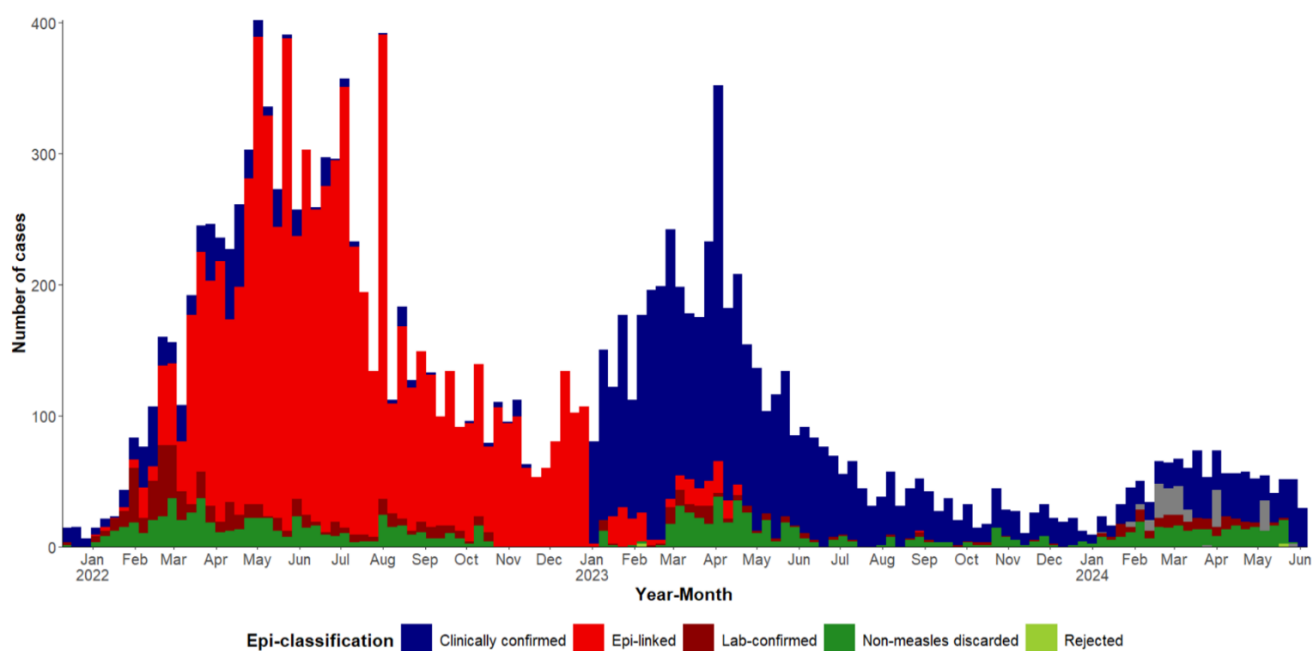


Figure 4: Epi-curve of Measles Cases by Epi-classification, Liberia, 13 December 2021– 9 June 2024

I. Coordination

- The response has been led by the County Health Teams with technical support from the National Public Health Institute of Liberia (NPHIL), the Ministry of Health (MOH) and partners.
- IMS meetings are being held for coordination and mobilization of resources in affected Counties.

II. Epidemiological Surveillance

- Active case search in affected and surrounding communities ongoing in Grand Kru County.
- Situational reports have been developed and disseminated to stakeholders
- Investigation of all rumors and alerts reported from the community ongoing in Grand Kru County

III. Case management

- Case management ongoing in affected counties

IV. Immunization

- Routine immunization ongoing across the country

V. Infection Prevention and Control (IPC)

- Reinforcing hand washing especially in the affected communities (Grand Kru)
- Distribution of IPC supplies such as gloves, nose masks, and hand sanitizers to responders (Grand Kru)

VI. Laboratory

- The National Public Health Reference Laboratory continues testing of Measles samples
- A total of Six hundred sixty-three (663) cases have been confirmed by the NPHRL from December 13, 2021 – June 9, 2024.

VII. Risk Communication and Community Engagement

- Continual community advocacy meetings with local leaders and family members in the affected communities (Grand Kru)
- Awareness and health education are ongoing on the spread and prevention of Measles at health facility and community levels in Grand Kru County
- Community engagement meetings in the affected communities ongoing in Grand Kru County

Challenges

- No DSA for responders (Grand Kru)
- No gasoline support (Grand Kru)

Acute Flaccid Paralysis (AFP)

- ☞ One (1) case was reported from Grand Gedeh County
 - Specimen was collected and pending testing
- ☞ Cumulatively, forty-nine (49) cases have been reported
 - Twenty-six (26) tested negative, Two (NPENT), 20 pending testing, and 1 pending testing

Neonatal Tetanus

- ☞ One (1) case was reported from Montserrado County
- ☞ Cumulatively, fifteen (15) cases have been reported including five (5) deaths

Influenza-Like Illnesses

Coronavirus Disease (COVID-19)

- ☞ Zero suspected cases reported
- ☞ Cumulatively, two (2) confirmed cases have been reported

Influenza

- ☞ Zero cases reported
- ☞ Cumulatively, seventy (70) suspected cases reported
 - Seventy (70) specimens were collected: 65 tested negative, 5 specimens were discarded

Viral Hemorrhagic Fever

Lassa fever

- ☞ Six (6) suspected cases were reported from Bong (5), and Montserrado 1 (death) Counties
 - Specimens were collected: 2 positive and 4 negative
- ☞ Cumulatively, one hundred four (104) suspected cases have been reported
 - Proportion of suspected cases with the sample collected (104/104) 100%
 - Proportion of suspected cases with sample tested (100/104) 96%
 - Confirmed 15 including 4 deaths, negative 85, and discarded 4
 - Case fatality rate: (4/15) 27%

Outbreak: January 6, 2022- May 29, 2024

- ☞ Two (2) new confirmed cases reported from Bong County
- ☞ Twenty-seven (27) contacts including 13 healthcare workers (HCWs) line listed and under follow-up
- ☞ Total of 39 contacts including 15 HCWs under 21 days follow up
- ☞ A total of 153 confirmed cases including 45 deaths reported
- ☞ Cumulative Case Fatality Rate (CFR): 29% (45/153)
- ☞ Four counties are currently in outbreak

Table 5: Summary of Lassa fever Outbreak, Liberia, January 6, 2022-June 9, 2024

| County | Outbreak Districts | Outbreak Start Date | Total suspected | Total confirmed | HCWs confirmed | Total Deaths | Deaths in HCWs | CFR % | Total Contacts | # HCW contacts | Contacts_became_cases | Contacts under follow up | Contacts completed | Days in countdown | Outbreak Status |
|--------------|--------------------|---------------------|-----------------|-----------------|----------------|--------------|----------------|------------|----------------|----------------|-----------------------|--------------------------|--------------------|-------------------|-----------------|
| Montserrado | Bushrod | 13-Feb-23 | 17 | 1 | 0 | 0 | 0 | 0% | 29 | 21 | 0 | 0 | 29 | Completed | Ended |
| | Central Morro | 27-Nov-23 | 1 | 2 | 0 | 1 | 0 | 50% | 49 | 0 | 0 | 0 | 49 | Completed | Ended |
| | Central Morro | 3-Mar-23 | 38 | 2 | 0 | 1 | 0 | 50% | 28 | 27 | 0 | 0 | 28 | Completed | Ended |
| | Bushrod | 30-Apr-24 | 2 | 1 | 0 | 0 | 0 | 0% | 14 | 6 | 0 | 0 | 14 | 27 | Countdown |
| Bong | Suakoko | 21-Apr-23 | 192 | 54 | 18 | 13 | 2 | 24% | 496 | 114 | 6 | 0 | 417 | Completed | Ended |
| | Jorquellah | 15-Oct-23 | 14 | 6 | 3 | 1 | 1 | 17% | 121 | 86 | 3 | 0 | 169 | Completed | Ended |
| | Kokoyah | 6-Jun-24 | 1 | 1 | 0 | 0 | 0 | 0% | 8 | 0 | 0 | 8 | 0 | Active | Ongoing |
| | Suakoko | 23-Feb-24 | 23 | 3 | 0 | 0 | 0 | 0% | 29 | 14 | 0 | 0 | 29 | 29 | Countdown |
| | Salala | 8-Mar-24 | 2 | 2 | 0 | 1 | 0 | 50% | 21 | 0 | 0 | 0 | 21 | Completed | Ended |
| | Jorquellah | 11-Apr-24 | 3 | 2 | 0 | 1 | 0 | 0% | 41 | 30 | 0 | 19 | 22 | Active | Ongoing |
| Grand Bassa | District 3A&B | 21-Aug-23 | 87 | 44 | 0 | 10 | 0 | 23% | 177 | 40 | 40 | 0 | 159 | Completed | Ended |
| | Buchanan | 11-Aug-23 | 2 | 1 | 0 | 1 | 0 | 100% | 4 | 2 | 0 | 0 | 4 | Completed | Ended |
| | District 3A&B | 30-Apr-24 | 5 | 3 | 0 | 1 | 0 | 33% | 12 | 3 | 0 | 12 | 0 | Active | Ongoing |
| Nimba | Sadepea-Mah | 21-Nov-23 | 4 | 2 | 0 | 1 | 0 | 50% | 5 | 0 | 0 | 0 | 5 | Completed | Ended |
| | Sarraquellie-Mah | 6-Feb-23 | 42 | 15 | 0 | 6 | 0 | 40% | 43 | 35 | 8 | 0 | 43 | Completed | Ended |
| | Tappita | 20-Nov-23 | 12 | 5 | 0 | 3 | 0 | 60% | 88 | 39 | 4 | 0 | 77 | Completed | Ended |
| | Bain-Garr | 1-Jun-23 | 24 | 6 | 0 | 3 | 0 | 50% | 61 | 25 | 0 | 0 | 31 | Completed | Ended |
| | Bain-Garr | 15-Apr-24 | 5 | 2 | 0 | 1 | 0 | 50% | 25 | 7 | 0 | 0 | 25 | 27 | Countdown |
| River Gee | Punapo | 25-Nov-22 | 2 | 1 | 0 | 1 | 0 | 100% | 14 | 0 | 0 | 0 | 14 | Completed | Ended |
| Total | | | 476 | 153 | 21 | 45 | 3 | 29% | 1265 | 449 | 61 | 39 | 1136 | | |

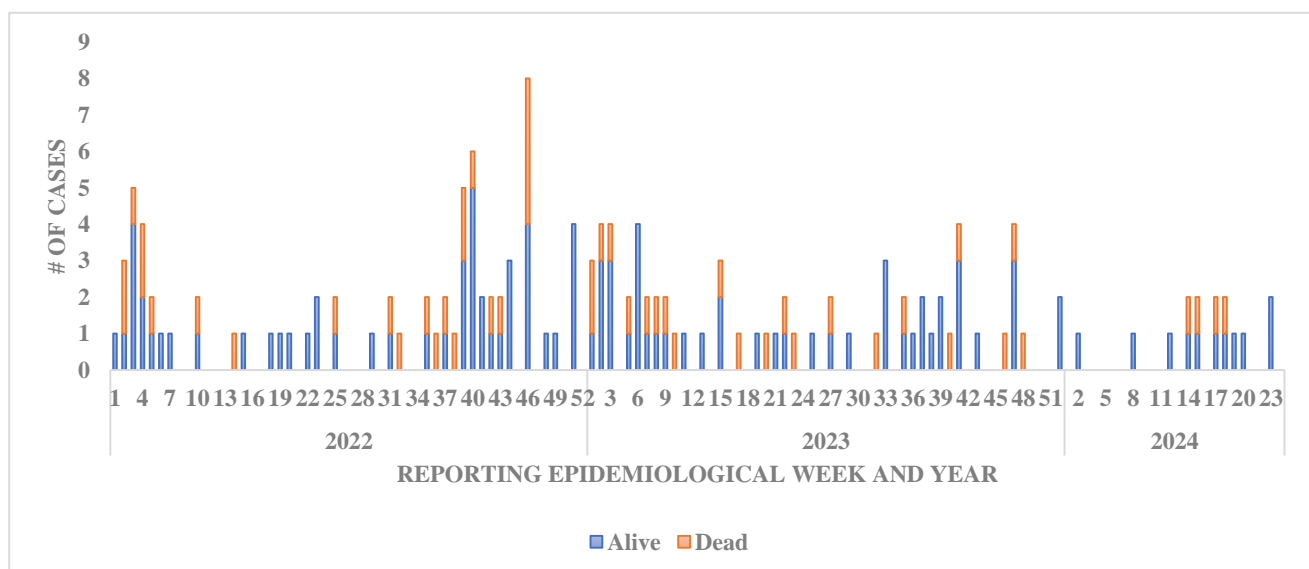


Figure 5: Epi-curve of Confirmed Lassa fever cases, Liberia, January 6, 2022- June 12, 2024

Public Health Measures

I. Coordination

- The National Public Health Institute of Liberia (NPHIL) and the Ministry of Health (MOH) are providing technical support to the surveillance team with support from partners.

II. Surveillance

- Active case search ongoing in affected communities and districts
- Twenty-seven (27) contacts line listed
- Weekly sit-reps developed and disseminated to stakeholders

III. Laboratory

- The National Public Health Reference Laboratory continues testing of Lassa fever samples
- A total of 153 Lassa fever cases have been confirmed since this outbreak

IV. Case management and IPC

- Ribavirin supply in the country is being distributed for treatment of Lf cases to affected counties
- Two (2) confirmed cases in isolation under-going ribavirin treatment at Phebe Hospital

Challenges

- Limited supply of IPC materials in affected counties
- Limited logistics (gasoline, communication cards, fuel, etc.) to support active case search and contact tracing in the affected county
- Lack of stationeries in EOC to produce case alert forms, contact tracing form and others tools for investigations (Bong County)

Yellow Fever

- ☞ Three (3) suspected cases reported from Grand Cape Mount, Grand Bassa, and River Gee Counties
- ☞ Specimens were collected, and tested negative
- ☞ Cumulatively forty-nine (49) cases have been reported
 - Proportion of suspected cases with samples collected (46/49) 94%, however, 3 samples pending testing, and 1 sample is to be investigated
 - Proportion of suspected cases with samples tested (41/46) 89% (negative 40) (1 indeterminate)

Dengue

- ☞ Zero suspected cases reported
- ☞ Cumulatively, four (4) suspected cases were reported

Ebola Virus Disease

- ☞ Zero cases reported

Diarrheal Diseases

Acute Bloody Diarrhea (Suspected Shigellosis)

- ☞ Six (6) cases were reported from Grand Gedeh (1), Grand Cape Mount (1), Lofa (1), Montserrado (1), Maryland (1), and Margibi (1) Counties
- ☞ Four specimens were collected and 2 pending testing
- ☞ Cumulatively, two hundred one (201) cases have been reported
 - 109 specimens were collected, 84 reached the Lab
 - 77 tested negative, 5 rejected
 - 2 confirmed (*S. flexneri* & *S. sonnei*)
 - 3 pending testing

Severe Acute Watery Diarrhea (Suspected Cholera)

- ☞ Six (6) cases were reported from Grand Kru (1), Rivercess (1), Nimba (1), Bong (1), Sinoe (1), and Lofa (1) Counties
 - Four specimens were collected and pending testing
- ☞ Cumulatively, one hundred forty-two (142) cases have been reported
 - 81 specimens collected, 48 reached the Lab
 - 41 tested negatives, 7 rejected

Other Reportable Diseases

Animal bite (Human Exposure to Rabies) Other Reportable Diseases

Animal bite (Human Exposure to Rabies)

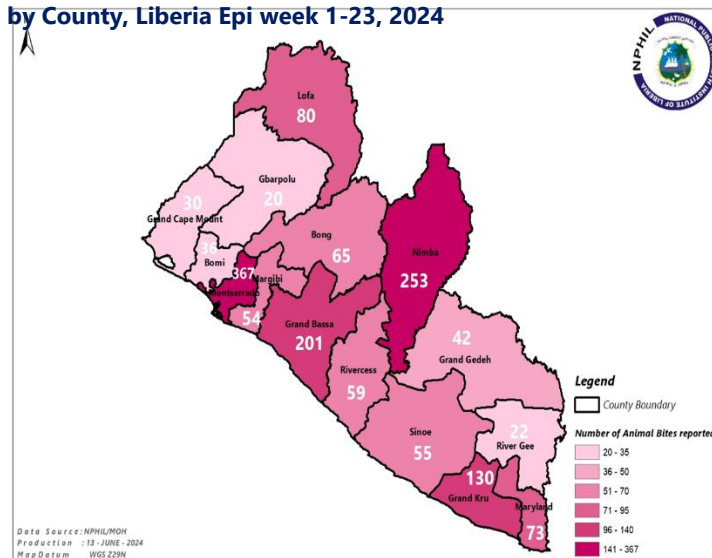
Forty-nine (49) animal bite cases were reported from Montserrado (15), Nimba (12), River Gee (4), Grand Gedeh (3) Lofa (3), Margibi (3), Grand Bassa (2), Maryland (2), Grand Cape Mount (1), Bomi (1), Bong (1), Grand Kru (1), and Sinoe (1) Counties

- ☞ All bites were attributed to dog
- ☞ * Proportion of cases investigated: (26/49) 53%
- ☞ Proportion of dogs vaccinated: (0/49) 0%
- ☞ Cumulatively, 1,416 cases have been reported

Public Health Actions

- ☞ PEP Administered to 13 persons (27%):
Montserrado (8), Maryland (2), Nimba (2) and Lofa (1) Counties
- ☞ PEP distributed to Nimba and Montserrado Counties
- ☞ *All cases were investigated only by the human surveillance team

Distribution of Human Exposure to Animal bites (Dog) Cases by County, Liberia Epi week 1-23, 2024



Meningitis

- ☞ One suspected case was reported from Montserrado County
 - Specimen was collected and tested negative
- ☞ Cumulatively, seventeen (17) suspected cases have been reported
 - Proportion of specimen collected (15/17) 88%, 2 specimens not collected
 - Proportion of specimens tested (14/15) 93% (13 negative, 1 positive), and one did not reach the lab

Mpox

- ☞ One (1) suspected case was reported from Nimba County
 - Specimen was collected and tested negative
- ☞ Cumulatively, forty-five (45) suspected cases have been reported with 38 samples collected, and 35 tested of which, 5 confirmed positive, 30 negative, and 1 rejected, 2 pending investigations

Outbreak

- ☞ No new confirmed case reported
- ☞ A total of 20 contacts are being followed up for 21 days
- ☞ Cumulatively 2 cases (1 positive, 1 suspected) have been reported since the beginning of the outbreak

Public Health Measure

I. Coordination

- Coordination is ongoing at county and district levels

II. Epi-surveillance

- Twenty (20) contacts are being daily monitoring
- Active case search is ongoing in the affected communities and its surroundings

III. Risk Communication & Community Engagement

- Awareness and health education on the spread and prevention of the disease in the affected communities and its surroundings are ongoing

IV. Infection Prevention and Control (IPC)

- Reinforced hand washing in the affected community

V. Case Management

- Treatment of confirmed case is in progress

VI. Planned Activities

- Monitor contacts daily for signs and symptoms of Mpox

Challenges

- No gasoline support to intensify response activities
- No feeding support for patients at the treatment units

Unexplained cluster of deaths

- ☞ Zero cases reported

An Unexplained Cluster of Health Events

- ☞ Zero cases reported

Other Events of Public Health Importance

Maternal Mortality

- ☞ Three (3) deaths were reported from Montserrado (2), and Grand Bassa (1) Counties
- ☞ Reported causes: Guillain Barre Syndrome, Cardiomyopathy, and Pregnancy Induce Hypertension
- ☞ Reporting sites:
 - Health facility (3/3) 100%
- ☞ Cumulatively, one hundred thirty-one (131) deaths reported
 - Proportion of deaths reviewed (43/131) 33%

Neonatal Mortality

- ☞ Twenty-one (21) deaths were reported from Montserrado (11), Maryland (7), Grand Kru (2), and Rivercess (1) Counties
- ☞ Reported causes: Birth Asphyxia (12), Sepsis (7), and Prematurity (2)
- ☞ Reported sites:
 - Health facility (20/21) 95%
 - Community (1/21) 5%
- ☞ Cumulatively, three hundred eighty-three (383) deaths reported
 - Proportion of deaths reviewed (103/383) 27%

Adverse Events Following Immunization (AEFI)/Adverse Drug Reaction (ADR)

- ☞ Twenty (21) cases were reported from Sinoe (11), Lofa (4), Gbarpolu (2), Nimba (2), Bomi (1), and Montserrado (1), Counties
- ☞ All were classified as non-serious
- ☞ Related vaccine:
 - Penta (15/21) 71%
 - BCG (6/21) 29%
- ☞ Cumulatively, five hundred forty-nine (549) events were reported and all were classified as non-serious.

Neglected Tropical Diseases

YAWS

- ☞ Zero cases were reported

Buruli Ulcer

- ☞ Zero cases were reported

Border Surveillance Update

A total of 5617 travelers were recorded from eight (8) designated out of Forty-five (45) official POEs with incoming travelers accounting for 51% (2839/5617)

Table 7: Border activity at the PoE for incoming and outgoing travelers, Liberia, Epi week 23

| Type of Ports | Point of Entry | Weekly total | Arrival | Departure | Total travelers with YB | Yellow Book Damage | Card Replaced | Travelers Vaccinated against YF & Issued book | Alerts detected/ Verified |
|-----------------|----------------------|--------------|--------------|--------------|-------------------------|--------------------|---------------|---|---------------------------|
| Airport | James S. Paynes | 36 | 20 | 16 | 1 | 0 | 0 | 0 | 0 |
| | Robert Int'l Airport | 4173 | 2178 | 1995 | 4126 | 3 | 47 | 0 | 0 |
| Seaport | Freeport of Monrovia | 364 | 182 | 182 | 364 | 0 | 0 | 0 | 0 |
| | Buchanan Port | 114 | 57 | 57 | 114 | 0 | 0 | 0 | 0 |
| Ground Crossing | Bo Water Side | 637 | 256 | 381 | 619 | 0 | 13 | 5 | 0 |
| | Ganta | 83 | 44 | 39 | 57 | 0 | 0 | 0 | 0 |
| | Yekepa | 53 | 34 | 19 | 17 | 0 | 0 | 0 | 0 |
| | Loguatu | 157 | 68 | 89 | 132 | 0 | 0 | 0 | 0 |
| Total | | 5,617 | 2,839 | 2,778 | 5,430 | 3 | 60 | 5 | 0 |

Note: Yellow book issue for both arrival and departure; Vaccination coverage for both arrival and departure

Public Health Measures

National level

- ☞ Providing remote technical and operational support to counties
- ☞ Produced and disseminated situation reports (Lassa fever, Measles, and Mpox outbreaks)
- ☞ Produced and disseminated weekly bulletin

County-level

Surveillance

- ☞ Publication of situational reports
- ☞ Active case search ongoing in affected and surrounding communities

Case Management

- ☞ Administration of PEP
- ☞ Management of measles and Lassa fever cases ongoing in affected counties

Appendix

Summary of Immediately Reportable Diseases, Conditions, and Events by County

| | | Bomi | Bong | Gbarpolu | Grand Bassa | Grand Cape Mount | Grand Gedeh | Grand Kru | Lofa | Margibi | Maryland | Montserrado | Nimba | Rivercess | River Gee | Sinoe | Total Weekly | Cumulative Reported | Cumulative Lab-confirmed | |
|--|--|----------|----------|----------|-------------|------------------|-------------|-----------|-----------|----------|-----------|-------------|-----------|-----------|-----------|-----------|--------------|---------------------|--------------------------|----|
| No. of Expected Health District | | 4 | 9 | 5 | 8 | 5 | 6 | 5 | 6 | 4 | 6 | 7 | 11 | 6 | 6 | 10 | 98 | | | |
| No. of Health District Reported | | 4 | 9 | 5 | 8 | 5 | 6 | 5 | 6 | 4 | 6 | 7 | 11 | 6 | 6 | 10 | 98 | | | |
| Vaccine Preventable Diseases | Acute Flaccid Paralysis (Suspected Polio) | A | 0 | 0 | 0 | 0 | 0 | 0 | 0 | 0 | 0 | 0 | 1 | 0 | 0 | 0 | 0 | 1 | 49 | 0 |
| | | D | 0 | 0 | 0 | 0 | 0 | 0 | 0 | 0 | 0 | 0 | 0 | 0 | 0 | 0 | 0 | 0 | 0 | 0 |
| | Measles | A | 0 | 0 | 4 | 0 | 1 | 4 | 1 | 1 | 2 | 2 | 1 | 10 | 1 | 0 | 2 | 30 | 1,111 | 50 |
| | | D | 0 | 0 | 0 | 0 | 0 | 0 | 0 | 0 | 0 | 0 | 0 | 0 | 0 | 0 | 0 | 0 | 0 | 0 |
| | Neonatal Tetanus | A | 0 | 0 | 0 | 0 | 0 | 0 | 0 | 0 | 0 | 0 | 1 | 0 | 0 | 0 | 0 | 1 | 15 | 0 |
| | | D | 0 | 0 | 0 | 0 | 0 | 0 | 1 | 0 | 0 | 0 | 0 | 0 | 0 | 0 | 0 | 1 | 5 | 0 |
| | Yellow fever | A | 0 | 0 | 0 | 1 | 0 | 0 | 0 | 0 | 0 | 0 | 0 | 1 | 0 | 1 | 0 | 3 | 49 | 0 |
| | | D | 0 | 0 | 0 | 0 | 0 | 0 | 0 | 0 | 0 | 0 | 0 | 0 | 0 | 0 | 0 | 0 | 0 | 0 |
| Viral Hemorrhagic Fe | Dengue fever | A | 0 | 0 | 0 | 0 | 0 | 0 | 0 | 0 | 0 | 0 | 0 | 0 | 0 | 0 | 0 | 0 | 3 | 0 |
| | | D | 0 | 0 | 0 | 0 | 0 | 0 | 0 | 0 | 0 | 0 | 0 | 0 | 0 | 0 | 0 | 0 | 0 | 0 |
| | Ebola Virus Disease | A | 0 | 0 | 0 | 0 | 0 | 0 | 0 | 0 | 0 | 0 | 0 | 0 | 0 | 0 | 0 | 0 | 0 | 0 |
| | | D | 0 | 0 | 0 | 0 | 0 | 0 | 0 | 0 | 0 | 0 | 0 | 0 | 0 | 0 | 0 | 0 | 0 | 0 |
| | Lassa fever | A | 0 | 5 | 0 | 0 | 0 | 0 | 0 | 0 | 0 | 0 | 0 | 0 | 0 | 0 | 0 | 5 | 100 | 2 |
| | | D | 0 | 0 | 0 | 0 | 0 | 0 | 0 | 0 | 0 | 0 | 1 | 0 | 0 | 0 | 0 | 1 | 4 | 0 |
| Influenza-Like | COVID-19 | A | 0 | 0 | 0 | 0 | 0 | 0 | 0 | 0 | 0 | 0 | 0 | 0 | 0 | 0 | 0 | 0 | 2 | 2 |
| | | D | 0 | 0 | 0 | 0 | 0 | 0 | 0 | 0 | 0 | 0 | 0 | 0 | 0 | 0 | 0 | 0 | 0 | 0 |
| | Influenza Like Illnesses | A | 0 | 0 | 0 | 0 | 0 | 0 | 0 | 0 | 0 | 0 | 0 | 0 | 0 | 0 | 0 | 0 | 70 | 0 |
| | | D | 0 | 0 | 0 | 0 | 0 | 0 | 0 | 0 | 0 | 0 | 0 | 0 | 0 | 0 | 0 | 0 | 0 | 0 |
| Diarrheal Disease | Acute Bloody Diarrhoea (Shigellosis) | A | 0 | 0 | 0 | 1 | 1 | 0 | 1 | 1 | 1 | 1 | 0 | 0 | 0 | 0 | 0 | 6 | 201 | 0 |
| | | D | 0 | 0 | 0 | 0 | 0 | 0 | 0 | 0 | 0 | 0 | 0 | 0 | 0 | 0 | 0 | 0 | 0 | 0 |
| | Severe Acute Watery Diarrhoea (Cholera) | A | 0 | 1 | 0 | 0 | 0 | 1 | 1 | 1 | 0 | 0 | 0 | 1 | 0 | 1 | 0 | 6 | 142 | 0 |
| | | D | 0 | 0 | 0 | 0 | 0 | 0 | 0 | 0 | 0 | 0 | 0 | 0 | 0 | 0 | 0 | 0 | 0 | 0 |
| Events of Public Health In | Maternal Mortality | D | 0 | 0 | 0 | 1 | 0 | 0 | 0 | 0 | 0 | 2 | 0 | 0 | 0 | 0 | 3 | 131 | | |
| | Neonatal Mortality | D | 0 | 0 | 0 | 0 | 0 | 2 | 0 | 0 | 7 | 11 | 0 | 1 | 0 | 0 | 21 | 383 | | |
| | AEFI | A | 1 | 0 | 2 | 0 | 0 | 0 | 4 | 0 | 0 | 1 | 2 | 0 | 0 | 11 | 21 | 549 | 0 | |
| | Unexplained Cluster of Health Events/Disease | A | 0 | 0 | 0 | 0 | 0 | 0 | 0 | 0 | 0 | 0 | 0 | 0 | 0 | 0 | 0 | 0 | 0 | 0 |
| | | D | 0 | 0 | 0 | 0 | 0 | 0 | 0 | 0 | 0 | 0 | 0 | 0 | 0 | 0 | 0 | 0 | 0 | 0 |
| Other Reportable Diseases | Mpox | A | 0 | 0 | 0 | 0 | 0 | 0 | 0 | 0 | 0 | 0 | 1 | 0 | 0 | 0 | 1 | 45 | 2 | |
| | | D | 0 | 0 | 0 | 0 | 0 | 0 | 0 | 0 | 0 | 0 | 0 | 0 | 0 | 0 | 0 | 0 | 0 | 0 |
| | Tuberculosis | A | 0 | 0 | 0 | 0 | 0 | 0 | 0 | 0 | 0 | 0 | 0 | 0 | 0 | 0 | 0 | 0 | 20 | 0 |
| | | D | 0 | 0 | 0 | 0 | 0 | 0 | 0 | 0 | 0 | 0 | 0 | 0 | 0 | 0 | 0 | 0 | 0 | 0 |
| | Human Exposure to Rabies (Suspected Human) | A | 2 | 1 | 0 | 2 | 1 | 3 | 1 | 3 | 3 | 2 | 15 | 12 | 0 | 4 | 1 | 49 | 1,416 | 0 |
| | | D | 0 | 0 | 0 | 0 | 0 | 0 | 0 | 0 | 0 | 0 | 0 | 0 | 0 | 0 | 0 | 0 | 1 | 0 |
| | Meningitis | A | 0 | 0 | 0 | 0 | 0 | 0 | 0 | 0 | 0 | 0 | 1 | 0 | 0 | 0 | 0 | 1 | 17 | 1 |
| | | D | 0 | 0 | 0 | 0 | 0 | 0 | 0 | 0 | 0 | 0 | 0 | 0 | 0 | 0 | 0 | 0 | 0 | 0 |
| Unexplained Cluster of deaths | A | 0 | 0 | 0 | 0 | 0 | 0 | 0 | 0 | 0 | 0 | 0 | 0 | 0 | 0 | 0 | 0 | 0 | 0 | |
| | D | 0 | 0 | 0 | 0 | 0 | 0 | 0 | 0 | 0 | 0 | 0 | 0 | 0 | 0 | 0 | 0 | 0 | 0 | |
| Neglected Tr | Buruli Ulcer | A | 0 | 0 | 0 | 0 | 0 | 0 | 0 | 0 | 0 | 0 | 0 | 0 | 0 | 0 | 0 | 0 | 0 | 0 |
| | | D | 0 | 0 | 0 | 0 | 0 | 0 | 0 | 0 | 0 | 0 | 0 | 0 | 0 | 0 | 0 | 0 | 0 | 0 |
| | Yaws | A | 0 | 0 | 0 | 0 | 0 | 0 | 0 | 0 | 0 | 0 | 0 | 0 | 0 | 0 | 0 | 0 | 0 | 0 |
| | | D | 0 | 0 | 0 | 0 | 0 | 0 | 0 | 0 | 0 | 0 | 0 | 0 | 0 | 0 | 0 | 0 | 0 | 0 |
| TOTAL | | 3 | 7 | 6 | 4 | 0 | 9 | 0 | 10 | 0 | 12 | 0 | 27 | 0 | 6 | 14 | 150 | 4313 | 7 | |

D = Dead **A** = Alive

Notes

- ☞ **Completeness** refers to the proportion of expected weekly IDSR reports received (target: $\geq 80\%$)
- ☞ **Timeliness** refers to the proportion of expected weekly IDSR reports received by the next level on time (target: $\geq 80\%$). The time requirement for weekly IDSR reports:
 - Health facility - required on or before 5:00 pm every Saturday to the district level
 - Health district - required on or before 5:00 pm every Sunday to the county level
 - County - required on or before 5:00 pm every Monday to the national level
- ☞ **Non-polio AFP rate** is the proportion of non-polio AFP cases per 100,000 among the estimated population under 15 years of age in 2017 (annual target: $\geq 2/100,000$)
- ☞ **Non-measles febrile rash illness rate** refers to the proportion of Negative measles cases per 100,000 population
- ☞ **Annualized maternal mortality rate** refers to the maternal mortality rate of a given period of less than one year and it is the number of maternal deaths per 100,000 live births
- ☞ **Annualized neonatal mortality rate** refers to the neonatal mortality ratio of a given period of less than one year and it is the number of neonatal deaths per 1,000 live births
- ☞ **Epi-linked** refers to any suspected case that has not had a specimen taken for serologic confirmation but is linked to a laboratory-confirmed case
- ☞ **Confirmed case** refers to a case whose specimen has been tested positive or reactive upon laboratory testing, or has been classified as confirmed by either epidemiologic linkage with a confirmed case or clinical compatibility with the disease or condition

Epidemiological bulletin published with support from WHO and CDC

For comments or questions, please contact

Ralph W. Jetoh, MD, MPH

Director

Infectious Disease and Epidemiology Division

National Public Health Institute of Liberia

Republic of Liberia

Email: ralphica2000@gmail.com

Phone: +231 886526388/777372655

Website: www.nphil.gov.lr

National Public Health Institute of Liberia (NPHIL)

MISSION

To prevent and control public health threats by promoting healthy outcomes and serving as a source of knowledge

VISION

A center of excellence to create health outcomes for Liberians through a strong preventive health system and expertise

EDITORIAL TEAM

DIDE / NPHIL

A. N. Mianah
T. O. Yeabah
J. S. Kokro
M.G. Jeuronlon
E. Dwalu
A.B. Corvah
G. B. Williams
S. K. Zayzay
L. W. Colee
M. Tegli
T. L. Hall
S. L. Flomo
M. S. Quiah
J. O. Abel
P. J. Thomas
H. M. Sherman
M.D. Vaye
N. K. Dovillie
A. Coker
S. Nuwolo
M. Gbeyeah

Ministry of Health
WHO Liberia Office
US CDC Liberia Office
AFENET-Liberia Office

Data sources

Data and information is provided by the fifteen County Surveillance Officers and National Public Health Reference Laboratory via regular weekly reports, telephone calls and email exchanges. Situations are evolving and dynamic therefore numbers stated are subject to change.