



Liberia IDSR Epidemiology Bulletin

Epi-week 13 (March 25-31, 2024)

Country Population: 5,104,413

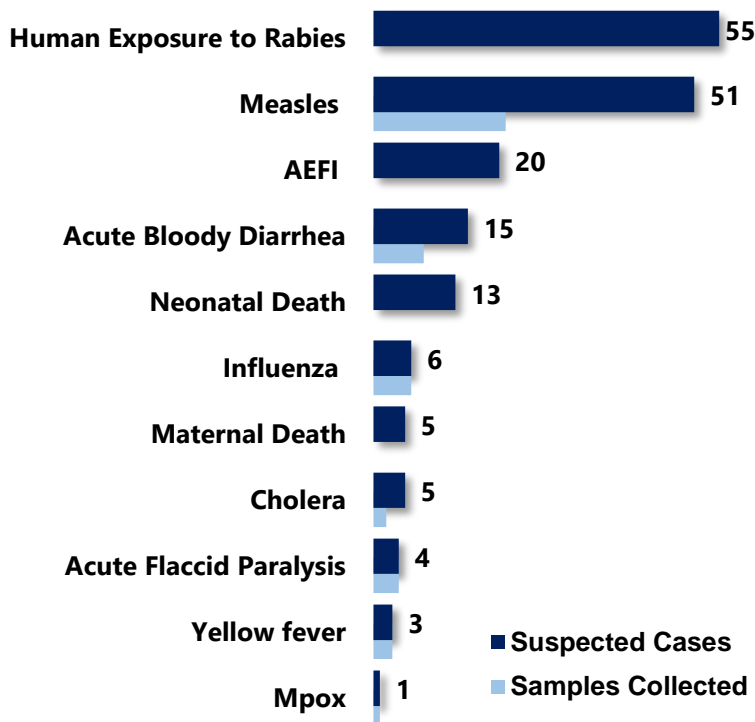
Volume 20 Issue 13

March 25-31, 2024

Data Source: CSOs from 15 Counties and Laboratory

Highlights

Figure 1: Public Health Events Reported



Keynotes and Events of Public Health Significance

- ◆ A total of **178 events** of public health importance including **18 deaths** reported
- ◆ **Completeness and timeliness** of health facility reports were both **99%**
- ◆ **Ongoing Lassa fever outbreak** in one county
- ◆ **Ongoing Measles outbreak** in five counties
- ◆ **Ongoing Mpox outbreak** in Nimba county

Adverse Events Following Immunization/Adverse Drug Reaction (AEFI)

Reporting Coverage

Table 1: Health Facility Weekly IDSR Reporting Coverage, Liberia, Epi-week 13, 2024

County	Expected Reports From HF*	Reports Received	Received on Time	Completeness (%)	Timeliness (%)
Bomi	29	29	29	100	100
Bong	66	63	63	97	97
Gbarpolu	18	18	18	100	100
Grand Bassa	38	38	38	100	100
Grand Cape Mount	36	36	36	100	100
Grand Gedeh	25	25	25	100	100
Grand Kru	25	25	25	100	100
Lofa	60	60	60	100	100
Margibi	62	62	62	100	100
Maryland	27	27	27	100	100
Montserrado	391	385	382	98	98
Nimba	102	102	102	100	100
Rivercess	21	21	21	100	100
River Gee	21	21	21	100	100
Sinoe	41	41	41	100	100
Liberia	962	953	950	99	99

953 (99%) Health facilities reported IDSR data

97(99%) Health districts reported IDSR data

950(99%) Health facilities reported timely IDSR data

◆ The national target for weekly IDSR reporting is 80%. Health facility timeliness is monitored at the health district level

Legend:



Vaccine-Preventable Diseases

Measles

- ☞ Fifty-one (51) suspected cases were reported (see table below)
 - Twenty-one (21) specimens were collected: 3 tested positive, 5 negative and 13 pending testing
 - Proportion of suspected cases that were vaccinated (32/51) 63%
- ☞ Cumulatively, five hundred eighty-nine (589) cases reported
 - Proportion of suspected cases with sample collected (258/589) 44%
 - Proportion of suspected cases with sample tested (202/258) 78% (negative 125, Lab confirmed 77)
 - Proportion of negative Measles cases tested for Rubella (106/125) 85% (negative 93, Lab confirmed 19, pending testing 7)

Table 2: Distribution and Vaccination Status of Measles Cases, Liberia, Epi-week 13, 2024

County	# of cases	Vaccinated	Number of Doses Received		
			One Dose	Two Doses	Doses Not Indicated
Bomi	1	0	0	0	0
Grand Bassa	1	0	0	0	0
Grand Cape Mount	2	2	2	0	0
Grand Gedeh	4	2	2	0	0
Grand Kru	9	4	3	1	0
Lofa	2	2	1	0	1
Margibi	2	1	1	0	0
Maryland	9	4	3	1	0
Montserrado	3	2	2	0	0
Nimba	11	9	8	1	0
River Gee	2	1	0	0	1
Sinoe	5	5	5	0	0
Total	51	32	27	3	2

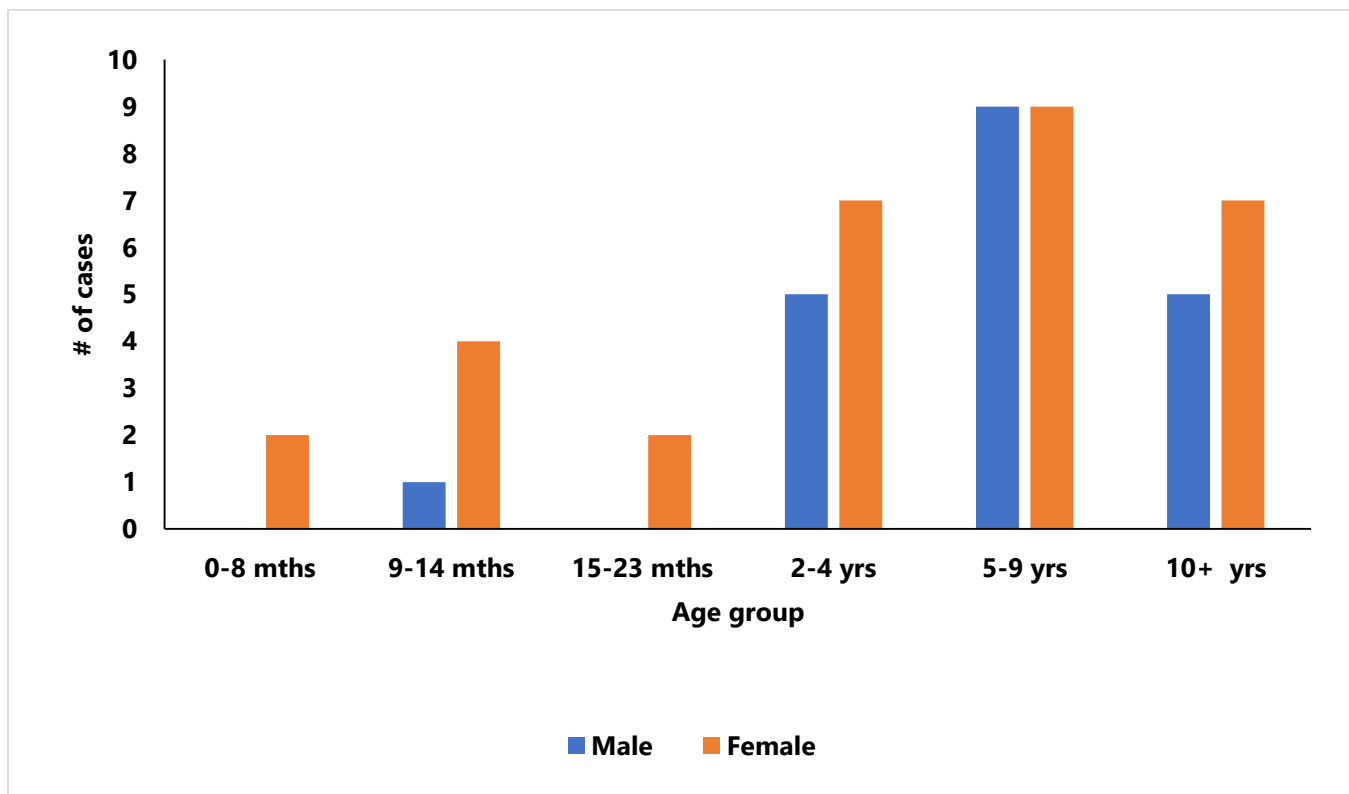


Figure 2: Distribution of Measles Cases by Age Group and Sex, Liberia Epi Week 13, 2024

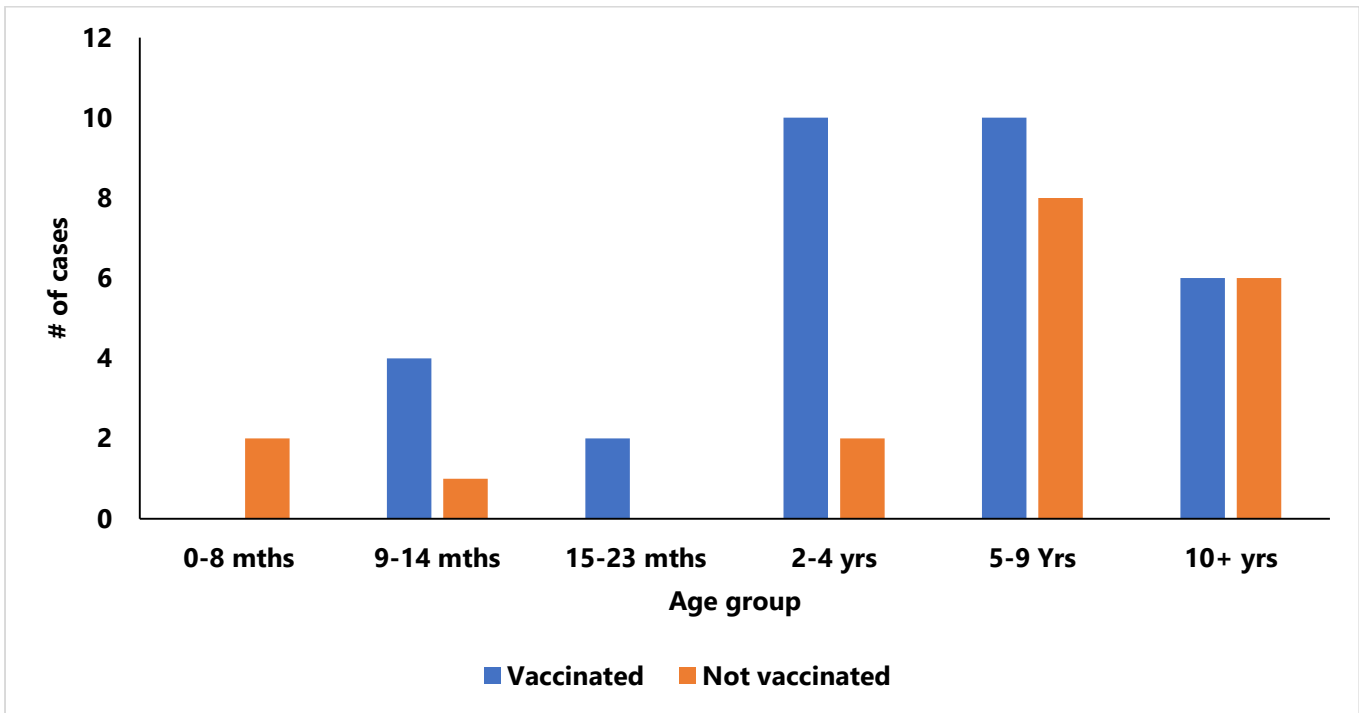


Figure 3: Vaccination Status of Suspected Measles Cases by Age Group, Liberia, Epi-Week 13, 2024

Outbreak Section

Table 3: Status of Confirmed (lab, clinically confirmed, and epi-linked) Measles Cases by County, Liberia, December 13, 2021- March 31, 2024

COUNTY	CUMULATIVE SUSPECTED CASES	CUMULATIVE CONFIRMED CASES	CLASSIFICATION OF CONFIRMED CASES			CLASSIFICATION OF CONFIRMED DEATHS			CUMULATIVE DEATHS	CFR (%)	# CONFIRMED CASES WEEK 11	# CONFIRMED CASES WEEK 12	Outbreak Status
			Lab confirmed	Epi Linked	Clinically Compatible	Lab confirmed	Epi Linked	Clinically Compatible					
Montserrado	5,456	5,373	148	1658	3,567	3	61	5	69	1.3	0	0	Ended
Nimba	1,181	1,156	50	227	879	0	1	3	4	0.4	2	6	Ongoing
Margibi	827	803	37	136	630	0	0	1	1	0.1	0	0	Ended
Grand Bassa	962	924	41	212	671	1	0	6	7	0.9	0	0	Ended
Lofa	353	284	35	66	183	0	0	0	0	0	0	0	Ended
Bong	603	578	25	21	532	0	1	2	3	0.5	0	0	Ended
Maryland	1242	1223	30	308	885	0	0	0	0	0	15	6	Ongoing
Grand Gedeh	707	558	64	99	395	0	0	0	0	0	2	5	Ongoing
Sinoe	284	231	48	84	99	0	0	0	0	0	0	0	Ended
Bomi	183	147	37	27	83	1	2	2	5	3	0	0	Ended
Grd Cape Mt	215	187	23	18	146	0	2	1	3	1.6	0	0	Ended
Grand Kru	1038	1,007	47	129	831	0	0	2	2	0.2	9	7	Ongoing
Gbarpolu	67	46	5	2	39	0	0	0	0	0	0	0	Ended
Rivercess	112	84	26	54	4	0	1	0	1	1.1	0	0	Ended
River Gee	126	93	25	20	50	0	0	0	0	0	2	5	Ongoing
Total	13,376	12,714	641	3,081	8,992	5	68	22	95	7.8	30	29	

Table 4: Status of Confirmed Measles Cases by County, Liberia, December 13, 2021 - March 20, 2024

County	Total Cases	Active	Recovery	Deaths	# of Districts
Montserrado	5,373	0	5,304	69	0/7
Nimba	1,158	2	1,152	4	1/6
Grand Bassa	924	0	917	7	0/8
Margibi	803	0	802	1	0/4
Bong	578	0	575	3	0/9
Maryland	1,241	9	1232	0	3/6
Lofa	284	0	284	0	0/6
Grand Kru	1,012	5	1005	2	2/5
Grand Cape Mount	187	0	184	3	0/5
Bomi	147	0	142	5	0/4
Rivercess	84	0	83	1	0/6
Gbarpolu	46	0	46	0	0/5
Grand Gedeh	561	3	558	0	2/6
River Gee	96	1	95	0	1/6
Sinoe	231	0	231	0	0/10
Total	12,725	20	12, 610	95	9/98

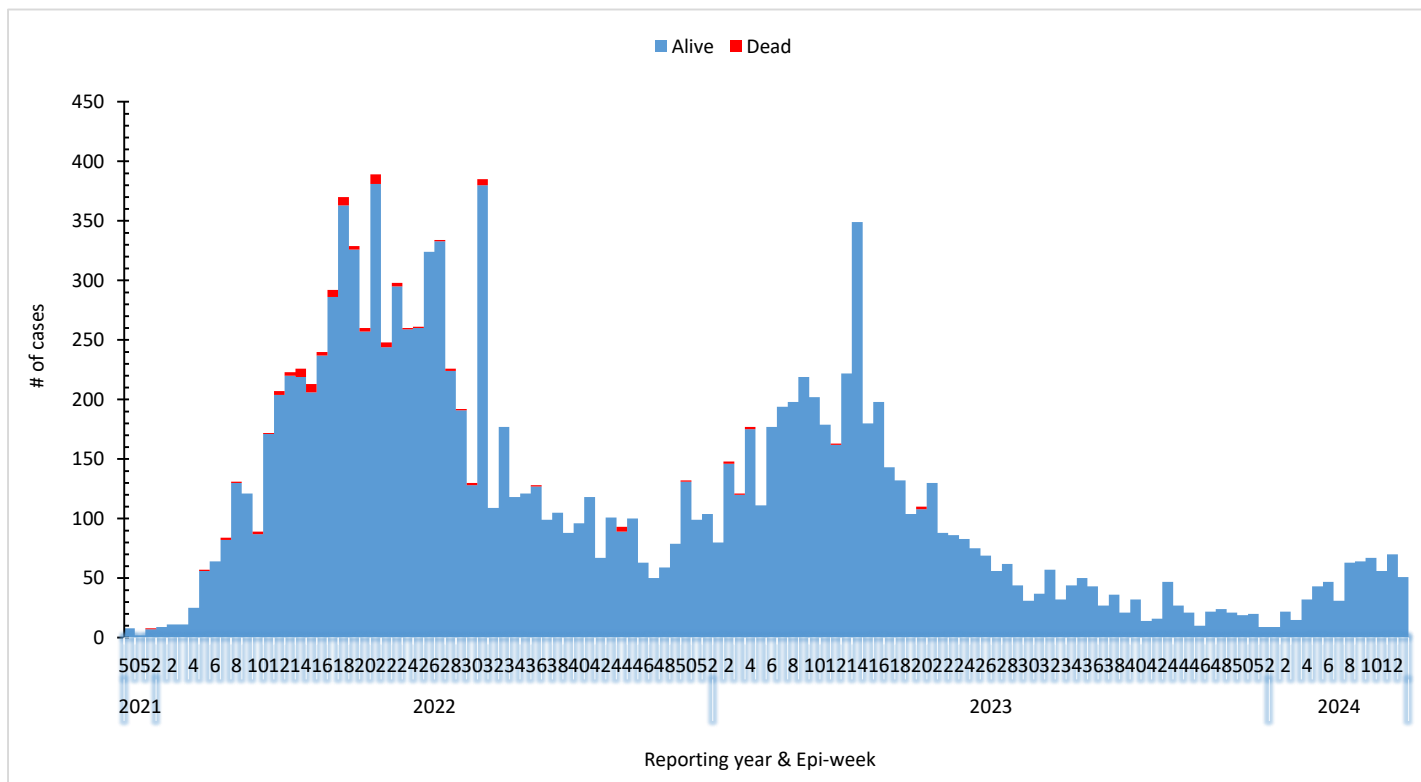


Figure 4: Epi Curve of Measles Cases Liberia, Epi week 50, 2021 – Epi week 13, 2024

I. Coordination

- IMS meetings are being held for coordination and mobilization of resources in affected Counties.

II. Epidemiological Surveillance

- Active case search and contact tracing ongoing in affected Counties/Districts; Maryland (Pleebo, Karluway-II, and Harper), River Gee (Sarbo), Nimba (Saclepea-Mah), Grand Kru (Buah and Barclayville), and Grand Gedeh (Konobo, and Tchien).

III. Case management

- Cases are being treated with Vitamin A, calamine lotion, and amoxicillin tablets in affected counties

IV. Immunization

- Routine immunization intensified in affected districts (Pleebo, Harper, Karluway-II, Tchien, Konobo, Buah, Barclayville, Saclepea-Mah, and Putu) in Maryland, Grand Gedeh, Grand Kru, Nimba, and River Gee Counties.

V. Laboratory

- Six hundred forty-one (641) cases have been confirmed by the NPHRL from December 13, 2021 – March 31, 2024.

VI. Risk Communication and Community Engagement

- Community engagement and health education ongoing in affected and surrounding communities.

Challenges

- Limited supply of essential medications and medical supplies for case management
- Lack of needed logistical resources to respond adequately

Acute Flaccid Paralysis (AFP)

- ☞ Four (4) cases were reported from Nimba (3), and Grand Bassa (1) Counties
 - All specimens were collected and shipped
- ☞ Cumulatively, Twenty-three (23) cases have been reported (22 shipped)
 - 8 tested negative and 14 pending testing
 - 1 ongoing 60 days of follow-up

Neonatal Tetanus

- ☞ Zero cases were reported
- ☞ Cumulatively, six (6) cases have been reported including three (3) deaths

Influenza-Like Illnesses

Coronavirus Disease (COVID-19)

- ☞ Zero suspected cases were reported
- ☞ Cumulatively, two (2) cases have been reported

Influenza

- ☞ Six (6) suspected cases were reported from Montserrado County
 - All specimens were collected and tested negative
- ☞ Cumulatively, fifty-nine (59) suspected cases reported
 - Fifty-nine (59) specimens were collected: 54 tested negative and 5 specimens were discarded

Viral Hemorrhagic Fever

Lassa fever

- ☞ Zero suspected cases were reported
- ☞ Cumulatively, fifty-three (53) suspected cases have been reported
 - Proportion of suspected cases with samples collected (53/53) 100%
 - Proportion of suspected cases with samples tested (52/53) 98%
 - Negative 49, confirmed 3, and 1 sample under review

Outbreak Section

- No new confirmed case reported
- Five (5) contacts 21 days follow up
- Sixteen (16) contacts completed 21 days of follow-up
- Cumulative Case Fatality Rate (CFR): 29% (41/141)
- One county (Bong) is currently in the outbreak

Table 5: Summary of Lassa fever Outbreak, Liberia, January 6, 2022- March 31, 2024

County	Outbreak Districts	Outbreak Start Date	Total suspected	Total confirmed	HCWs confirmed	Total Deaths	Deaths in HCWs	CFR %	Total Contacts	# HCW contacts	Contacts became cases	Contacts under follow up	Contacts completed	Days in countdown	Outbreak Status
Montserrado	Bushrod	13-Feb-23	17	1	0	0	0	0%	29	21	0	0	29	Completed	Over
	Central Monrovia	27-Nov-23	1	2	0	1	0	50%	49	0	0	0	49	Completed	Over
	Central Monrovia	3-Mar-23	38	2	0	1	0	50%	28	27	0	0	28	Completed	Over
Bong	Suakoko	21-Apr-24	192	54	18	13	2	24%	496	114	6	0	417	Completed	Over
	Suakoko	23-Feb-24	7	2	0	0	0	0%	21	10	0	5	16	Active	Ongoing
	Jorquelleh	15-Oct-23	14	6	3	1	1	17%	121	86	3	0	169	Completed	Over
Grand Bassa	District 3A&B	21-Aug-23	87	44	0	10	0	23%	177	40	40	0	159	Completed	Over
	Buchanan	11-Aug-23	2	1	0	1	0	100%	4	2	0	0	4	Completed	Over
Nimba	Saclepea-Mah	21-Nov-23	4	2	0	1	0	50%	5	0	0	0	5	Completed	Over
	Sanniquellie-Mah	6-Feb-23	42	15	0	6	0	40%	43	35	8	0	43	Completed	Over
	Tappita	20-Nov-23	12	5	0	3	0	60%	88	39	4	0	77	Completed	Over
	Bain-Garr	1-Jun-23	24	6	0	3	0	50%	61	25	0	0	31	Completed	Over
River Gee	Putupo	25-Nov-22	1	1	0	1	0	100%	14	0	0	0	14	Completed	Over
Total			441	141	21	41	3	29%	1136	399	61	5	1041		

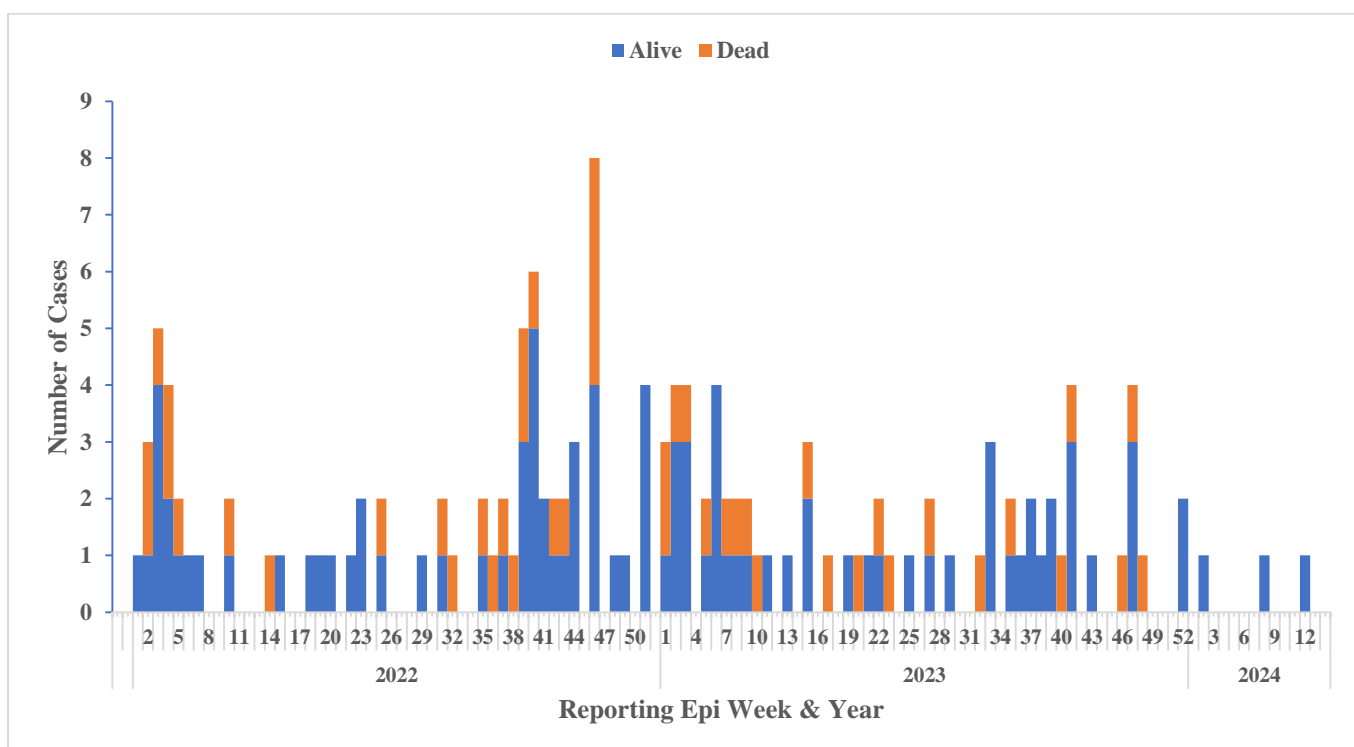


Figure 5: Epi-curve of Lassa fever cases, Liberia, January 6, 2022- March 31, 2024

Public Health Measures

I. Coordination

- The National Public Health Institute of Liberia (NPHIL) and the Ministry of Health (MOH) are providing technical support to the surveillance team with support from partners.

II. Surveillance

- Active case search ongoing in affected communities and districts
- Weekly sit-reps developed and disseminated to stakeholders

III. Laboratory

- The National Public Health Reference Laboratory continues testing of Lassa fever samples
- A total of 141 Lassa fever cases have been confirmed since this outbreak

IV. Case management and IPC

- Ribavirin supply in the country is being distributed for treatment of Lf cases to affected counties
- Ribavirin is being administered to the current confirmed case at Phebe Hospital isolation

Challenges

- Limited support for communication and transportation to enhance contact tracing and active case search
- Limited stationeries in the EOC to produce case alert forms, contact tracing forms, and other tools for investigation

Yellow fever

- 📋 Three (3) suspected cases were reported from Grand Cape Mount County
 - All specimens were collected and tested: 2 negative and 1 presumptive positive
- 📋 Cumulatively Twenty-five (25) cases have been reported
 - Proportion of suspected cases with samples collected (23/25) 92% however, 2 samples were discarded
 - Proportion of suspected cases with samples tested (18/25) 72% (negative 18)
 - Three (3) samples pending testing

Dengue

- 📋 Zero cases were reported
- 📋 Cumulatively three (3) suspected cases were reported

Ebola Virus Disease

- 📋 Zero cases have been reported

Diarrheal Diseases

Acute Bloody Diarrhea (Suspected Shigellosis)

- 📋 Fifteen (15) cases were reported from Nimba (5), Lofa (3), Grand Gedeh (2), Maryland (1), Bong (1), Sinoe (1), Rivercess (1), and Margibi (1) Counties
 - Eight (8) specimens were collected: and pending testing
- 📋 Cumulatively, hundred thirteen (113) cases have been reported
 - 64 specimens collected, 49 reached the Lab
 - 31 tested negative, 3 rejected, 15 pending testing

Severe Acute Watery Diarrhea (Suspected Cholera)

- 📋 Six (6) cases were reported from Sinoe (2), Nimba (2), Margibi (1), and Grand Bassa (1) Counties
 - Three (3) specimens were collected and pending testing
- 📋 Cumulatively, seventy-five (75) cases have been reported
 - 45 specimens collected, 30 reached the Lab
 - 18 tested negative, 3 rejected and 9 pending testing

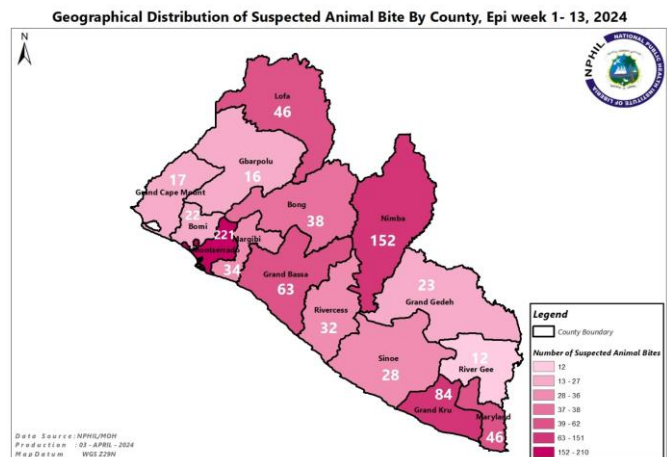
Other Reportable Diseases

Animal bite (Human Exposure to Rabies)

- ☞ Fifty-five (55) animal bite cases were reported from Nimba (14), Grand Kru (12), Montserrado (11), Maryland (4) Lofa (4), Grand Bassa (4), Bomi (3), Grand Gedeh (2), and Margibi (1) Counties
- ☞ All bites were attributed to dog
- ☞ Proportion of cases investigated: (38/55) 69%
- ☞ Proportion of dogs vaccinated: (0/55) 0%
- ☞ Cumulatively, 835 cases have been reported

Public Health Actions

- ☞ All cases were clinically managed and sent home
- ☞ PEP Administered to 6 persons (11%): Lofa, Montserrado, Nimba and Maryland Counties
- ☞ Thirty-three (33) dogs were restrained and underwent 10-14 days' follow-up
 - All cases were investigated only by the human health surveillance team



Tuberculosis

- ☞ Zero cases were reported
- ☞ Cumulatively, twenty-five (25) drug susceptible Tuberculosis cases were reported
 - Twenty (20) cases diagnosed and placed on treatment
 - Five (5) cases diagnosed and not placed on treatment
 - Zero Multi-Drug Resistance/Rifampicin Resistance TB

Meningitis

- ☞ Zero cases were reported
- ☞ Cumulatively, eight (8) suspected cases have been reported
 - Proportion of specimen collected (8/8) 100%
 - Proportion of specimen tested 6/8 75% (5 negative, 1 positive)

Mpox

- ☞ One (1) suspected case was reported from Nimba County
 - Specimen was collected and tested negative
- ☞ Cumulatively, twenty-six (26) suspected cases have been reported, 4 tested positive, 15 were negative, 5 discarded 1 pending testing, and 1 rejected

Unexplained cluster of deaths

- ☞ Zero cases reported

Unexplained cluster of Health Events

- ☞ Zero cases reported

Events of Public Health Importance

Maternal Mortality

- ☞ Five (5) deaths were reported from Montserrado (3), Grand Bassa (1), and Nimba (1) Counties
- ☞ Reported causes: Sepsis (3) and PPH (2)
- ☞ Reporting sites
 - Health facility (5/5) 100%
- ☞ Cumulatively, sixty-eight (68) deaths reported
 - Proportion of deaths reviewed (29/68) 43%.

Neonatal Mortality

- ☞ Thirteen (13) deaths were reported from Montserrado (9), Bong (2), Rivercess (1) and Nimba (1) Counties
- ☞ Reported causes: Birth asphyxia (8), Neonatal sepsis (5)
 - Reported sites:
 - Health facility (11/13) 85%
 - Community (2/13) 15%
- ☞ Cumulatively, one hundred seventy (170) deaths reported
 - Proportion of deaths reviewed (55/170) 32%

Adverse Events Following Immunization (AEFI)/Adverse Drug Reaction (ADR)

- ☞ Twenty (20) cases were reported from Sinoe (11), Grand Kru (3), Lofa (2), Nimba (1), Grand Gedeh (1), Grand Bassa (1), and Montserrado (1) Counties
- ☞ All reported cases were classified as non-serious
- ☞ Related vaccine:
 - Penta (11/20) 55%
 - Measles (3/20) 15%
 - COVID (3/20) 15%
 - Others (3/20) 15%
- ☞ Cumulatively, three hundred nineteen (319) events were reported and all were classified as non-serious.

Neglected Tropical Diseases

YAWS

- ☞ Zero cases were reported

Buruli Ulcer

- ☞ Zero cases were reported

Border Surveillance Update

A total of 5955 travelers were recorded for the week with incoming travelers accounting for 56% (3274/5818)

Table 6: Border activity at the PoE for incoming and outgoing travelers, Liberia, Epi week 13

Type of Ports	Point of Entry	Weekly total	Arrival	Departure	Total travelers with YB	Yellow Book Damage	Card Replaced	Vaccinated against YF & Issued book	Alerts detected/ Verified	Evidence of COVID-19 vaccination card/certificate
Airport	James S. Paynes	26	13	13	1	0	0	0	0	0
	Robert Int'l Airport	4905	2804	2101	4854	2	51	0	0	4835
Seaport	Freeport of Monrovia	130	65	65	130	0	0	0	0	130
	Buchanan Port	46	23	23	46	0	0	0	0	46
Ground Crossing	Bo Water Side	475	242	233	466	0	9	0	0	230
	Ganta	86	65	21	42	0	0	15	0	17
	Yekepa	41	22	19	7	0	0	0	0	12
	Loguatu	109	40	69	79	0	0	0	0	37
Total		5,818	3,274	2,544	5,625	2	60	15	0	5,307

Note: Yellow book issue for both arrival and departure; Vaccination coverage for both arrival and departure

Public Health Measures

National level

- ✎ Providing remote technical and operational support to counties
- ✎ Produced and disseminated situation reports (Lassa fever, Measles, and Mpox outbreaks)
- ✎ Produced and disseminated weekly bulletin

County-level

✎ Surveillance

- Publication of situational reports
- Active case search ongoing in affected and surrounding communities

✎ Case Management

- Administration of PEP
- Management of measles and Lassa fever cases ongoing in affected counties

Appendix

Summary of Immediately Reportable Diseases, Conditions, and Events by County

		Bomi	Bong	Gbarpolu	Grand Bassa	Grand Cape Mount	Grand Gedeh	Grand Kru	Lofa	Margibi	Maryland	Montserrado	Nimba	Rivercess	River Gee	Sinoe	Total Weekly	Cumulative Reported	Cumulative Lab-confirmed	
No. of Expected Health District		4	9	5	8	5	6	5	6	4	6	7	11	6	6	10	98			
No. of Health District Reported		4	9	5	8	5	6	5	6	4	6	7	11	6	6	10	98			
Vaccine Preventable Disease	Acute Flaccid Paralysis (Suspected Polio)	A	0	0	0	1	0	0	0	0	0	0	0	3	0	0	0	4	23	0
		D	0	0	0	0	0	0	0	0	0	0	0	0	0	0	0	0	0	0
	Measles	A	1	0	0	1	2	4	9	2	2	9	3	11	0	2	5	51	589	77
		D	0	0	0	0	0	0	0	0	0	0	0	0	0	0	0	0	0	0
	Neonatal Tetanus	A	0	0	0	0	0	0	0	0	0	0	0	0	0	0	0	0	6	0
		D	0	0	0	0	0	0	0	0	0	0	0	0	0	0	0	0	3	0
	Yellow fever	A	0	0	0	0	3	0	0	0	0	0	0	0	0	0	0	3	25	0
		D	0	0	0	0	0	0	0	0	0	0	0	0	0	0	0	0	0	0
Viral Hemorrhagic	Dengue fever	A	0	0	0	0	0	0	0	0	0	0	0	0	0	0	0	0	3	0
		D	0	0	0	0	0	0	0	0	0	0	0	0	0	0	0	0	0	0
	Ebola Virus Disease	A	0	0	0	0	0	0	0	0	0	0	0	0	0	0	0	0	0	0
		D	0	0	0	0	0	0	0	0	0	0	0	0	0	0	0	0	0	0
	Lassa fever	A	0	0	0	0	0	0	0	0	0	0	0	0	0	0	0	0	46	2
		D	0	0	0	0	0	0	0	0	0	0	0	0	0	0	0	0	7	1
Influenza-Like	COVID-19	A	0	0	0	0	0	0	0	0	0	0	0	0	0	0	0	0	2	2
		D	0	0	0	0	0	0	0	0	0	0	0	0	0	0	0	0	0	0
	Influenza Like Illnesses	A	0	0	0	0	0	0	0	0	0	0	6	0	0	0	0	6	59	0
		D	0	0	0	0	0	0	0	0	0	0	0	0	0	0	0	0	0	0
Diarrheal Disease	Acute Bloody Diarrhoea (Shigellosis)	A	0	1	0	0	0	2	0	3	1	1	0	5	1	0	1	15	115	0
		D	0	0	0	0	0	0	0	0	0	0	0	0	0	0	0	0	0	0
	Severe Acute Watery Diarrhoea (Cholera)	A	0	0	0	1	0	0	0	0	0	0	0	2	0	0	2	5	87	0
		D	0	0	0	0	0	0	0	0	0	0	0	0	0	0	0	0	0	0
Events of Public Health Interest	Maternal Mortality	D	0	0	0	1	0	0	0	0	0	3	1	0	0	0	5	68		
		D	0	2	0	0	0	0	0	0	0	0	9	1	1	0	13	170		
	AEFI	A	0	0	0	1	0	1	3	2	0	0	1	1	0	0	11	20	319	0
		D	0	0	0	0	0	0	0	0	0	0	0	0	0	0	0	0	0	0
	Unexplained Cluster of Health Events/Disease	A	0	0	0	0	0	0	0	0	0	0	0	0	0	0	0	0	0	0
		D	0	0	0	0	0	0	0	0	0	0	0	0	0	0	0	0	0	0
Other Reportable Diseases	Mpox	A	0	0	0	0	0	0	0	0	0	0	1	0	0	0	1	26	4	
		D	0	0	0	0	0	0	0	0	0	0	0	0	0	0	0	0	0	0
	Tuberculosis	A	0	0	0	0	0	0	0	0	0	0	0	0	0	0	0	0	20	0
		D	0	0	0	0	0	0	0	0	0	0	0	0	0	0	0	0	0	0
	Human Exposure to Rabies (Suspected Human)	A	3	0	0	4	0	2	12	4	1	4	11	14	0	0	0	55	835	0
		D	0	0	0	0	0	0	0	0	0	0	0	0	0	0	0	0	1	0
	Meningitis	A	0	0	0	0	0	0	0	0	0	0	0	0	0	0	0	0	8	1
		D	0	0	0	0	0	0	0	0	0	0	0	0	0	0	0	0	0	0
Unexplained Cluster of deaths	A	0	0	0	0	0	0	0	0	0	0	0	0	0	0	0	0	0	0	
	D	0	0	0	0	0	0	0	0	0	0	0	0	0	0	0	0	0	0	
Neglected Tropical Diseases	Buruli Ulcer	A	0	0	0	0	0	0	0	0	0	0	0	0	0	0	0	0	0	
		D	0	0	0	0	0	0	0	0	0	0	0	0	0	0	0	0	0	
	Yaws	A	0	0	0	0	0	0	0	0	0	0	0	0	0	0	0	0	0	
		D	0	0	0	0	0	0	0	0	0	0	0	0	0	0	0	0	0	
TOTAL		4	3	0	9	0	9	0	11	0	14	0	39	0	2	19	178	2412	10	

D = Dead **A** = Alive

Notes

- ☞ **Completeness** refers to the proportion of expected weekly IDSR reports received (target: $\geq 80\%$)
- ☞ **Timeliness** refers to the proportion of expected weekly IDSR reports received by the next level on time (target: $\geq 80\%$). The time requirement for weekly IDSR reports:
 - Health facility - required on or before 5:00 pm every Saturday to the district level
 - Health district - required on or before 5:00 pm every Sunday to the county level
 - County - required on or before 5:00 pm every Monday to the national level
- ☞ **Non-polio AFP rate** is the proportion of non-polio AFP cases per 100,000 among the estimated population under 15 years of age in 2017 (annual target: $\geq 2/100,000$)
- ☞ **Non-measles febrile rash illness rate** refers to the proportion of Negative measles cases per 100,000 population
- ☞ **Annualized maternal mortality rate** refers to the maternal mortality rate of a given period of less than one year and it is the number of maternal deaths per 100,000 live births
- ☞ **Annualized neonatal mortality rate** refers to the neonatal mortality ratio of a given period of less than one year and it is the number of neonatal deaths per 1,000 live births
- ☞ **Epi-linked** refers to any suspected case that has not had a specimen taken for serologic confirmation but is linked to a laboratory-confirmed case
- ☞ **Confirmed case** refers to a case whose specimen has been tested positive or reactive upon laboratory testing, or has been classified as confirmed by either epidemiologic linkage with a confirmed case or clinical compatibility with the disease or condition

Epidemiological bulletin published with support from WHO and CDC

For comments or questions, please contact

Ralph W. Jetoh, MD, MPH

Director

Infectious Disease and Epidemiology Division
National Public Health Institute of Liberia
Republic of Liberia

Email: ralphica2000@gmail.com

Phone: +231 886526388/777372655

Website: www.nphil.gov.lr

National Public Health Institute of Liberia (NPHIL)

MISSION

To prevent and control public health threats by promoting healthy outcomes and serving as a source of knowledge

VISION

A center of excellence to create health outcomes for Liberians through a strong preventive health system and expertise

EDITORIAL TEAM

DIDE / NPHIL

A. N. Mianah
T. O. Yeabah
J. S. Kokro
M.G. Jeuronlon
E. Dwalu
A.B. Corvah
G. B. Williams
S. K. Zayzay
L. W. Colee
M. Tegli
T. L. Hall
S. L. Flomo
M. S. Quiah
J. O. Abel
P. J. Thomas
H. M. Sherman
M.D. Vaye
N. K. Dovillie
A. Coker
S. Nuwolo
M. Gbeyeah

Ministry of Health
WHO Liberia Office
US CDC Liberia Office
AFENET-Liberia Office

Data sources

Data and information is provided by the fifteen County Surveillance Officers and National Public Health Reference Laboratory via regular weekly reports, telephone calls and email exchanges. Situations are evolving and dynamic therefore numbers stated are subject to change.