



<b>SITUATION: LASSA FEVER OUTBREAK</b>	<b>LOCATION: LIBERIA</b>
<b>DATE OF REPORT: JAN 26, 2024</b>	<b>OUTBREAK START DATE: JANUARY 6, 2022</b>
<b>REPORTING PERIOD: JAN 14 - 26, 2024</b>	<b>SITREP NO: 87</b>

## HIGHLIGHTS

- **No new confirmed case reported**
- A total of 34 contacts including 13 healthcare workers under follow up
- Cumulative Case Fatality Rate (CFR): 29% (32/110)
- Two counties currently in outbreak

## SITUATIONAL CONTEXT

Lassa fever is a major public health concern in Liberia and West Africa at large. To date, eight (8) out of the fifteen (15) counties (Bong, Grand Bassa, Nimba, Margibi, Lofa, Montserrado, Grand Kru, and River Gee) have reported confirmed cases. Bong, Grand Bassa, and Nimba counties are endemic, while Margibi, Lofa, Montserrado, Grand Kru, and River Gee have reported sporadic cases.

In 2021, the country experienced 12 outbreaks including 25 laboratory-confirmed cases with 15 deaths accounting for a 60% case fatality rate (CFR). These outbreaks generated 325 contacts of which 196 were healthcare workers (HCWs).

From January 6, 2022 to present, we recorded 15 outbreaks. The ongoing outbreak, which started January 6, 2022, in Bong County, has recorded 110 laboratory-confirmed cases including 32 deaths (CRF 29%). A total of 1121 contacts were recorded including 487 healthcare workers.

**Table 1: Summary of Current Lassa fever Outbreak, Liberia, January 6, 2022 – January 26, 2024**

County	Outbreak Districts	Outbreak Start Date	Total suspected cases	Total confirmed cases	Deaths in HCWs	Total Deaths	CFR %	Total Contacts	# HCW contacts	Contacts became cases	HCW became confirmed case	Contacts under follow up	Contacts completed	Days in countdown	Outbreak Status
Montserrado	Bushrod	13-Feb-23	15	2	0	1	50%	29	21	0	0	0	29	Completed	Over
	Central Monrovia	3-Mar-23	29	1	0	1	100%	28	27	0	0	0	28	Completed	Over
Bong	Suakoko	21-Apr-23	156	47	2	10	21%	480	194	6	18	7	410	Active	Ongoing
	Sanoyea	19-Sep-23	2	2	0	1	50%	36	18	0	0	0	37	Completed	Over
	Kokoya	3-Oct-23	1	1	0	0	0%	5	0	0	0	0	5	Completed	Over
	Jorquelleh	15-Oct-23	12	13	1	3	23%	121	86	3	3	0	169	Completed	Over
Grand Bassa	District 3A&B	21-Aug-23	86	32	0	9	28%	177	40	40	0	0	159	Completed	Over
	Buchanan	11-Aug-23	2	1	0	1	100%	4	2	0	0	0	0	Completed	Over
Nimba	Sanniquelle-Mah	6-Feb-23	42	2	0	0	0%	43	35	8	0	0	43	Completed	Over
	Tappita	20-Nov-23	15	4	0	3	75%	88	39	4	0	27	50	Active	Ongoing
	Bain-Garr	1-Jun-23	10	3	0	3	100%	61	25	0	0	0	31	Completed	Over
Montserrado	Central Monrovia	27-Nov-23	1	1	0	0	0%	49	0	0	0	0	49	Completed	Over
<b>Total</b>			<b>371</b>	<b>110</b>	<b>3</b>	<b>32</b>	<b>29%</b>	<b>1121</b>	<b>487</b>	<b>61</b>	<b>21</b>	<b>34</b>	<b>1010</b>		

## **Bong County: Suakoko, Jorquelleh Sanoyea, Kokoya Districts**

☞ **No new confirmed case reported**

☞ Cumulative confirmed cases: 23

- Suakoko District: 18
- Jorquelleh District: 3
- Sanoyea District: 1
- Kokoya District: 1

☞ CFR (5/23) 22%

☞ Cumulatively, 542 contacts including 53 healthcare workers were generated

- 535 contacts completed 21 days follow up
- 7 contacts currently under follow-up

## **Nimba: Bain Garr, Tappita, and Yarwin Mehnsionoh Districts**

☞ **No new confirmed case reported**

☞ Cumulative confirmed cases: 7

- Bain Garr District: 2
- Tappita District: 4
- Yarwin Mehnsionoh: 1
- CFR (4/6) 67%

☞ Cumulatively, 117 contacts including 38 HCWs were generated

- 93 contacts including 46 HCWs completed 21 days follow up
- 27 contacts including 10 HCWs currently under follow up

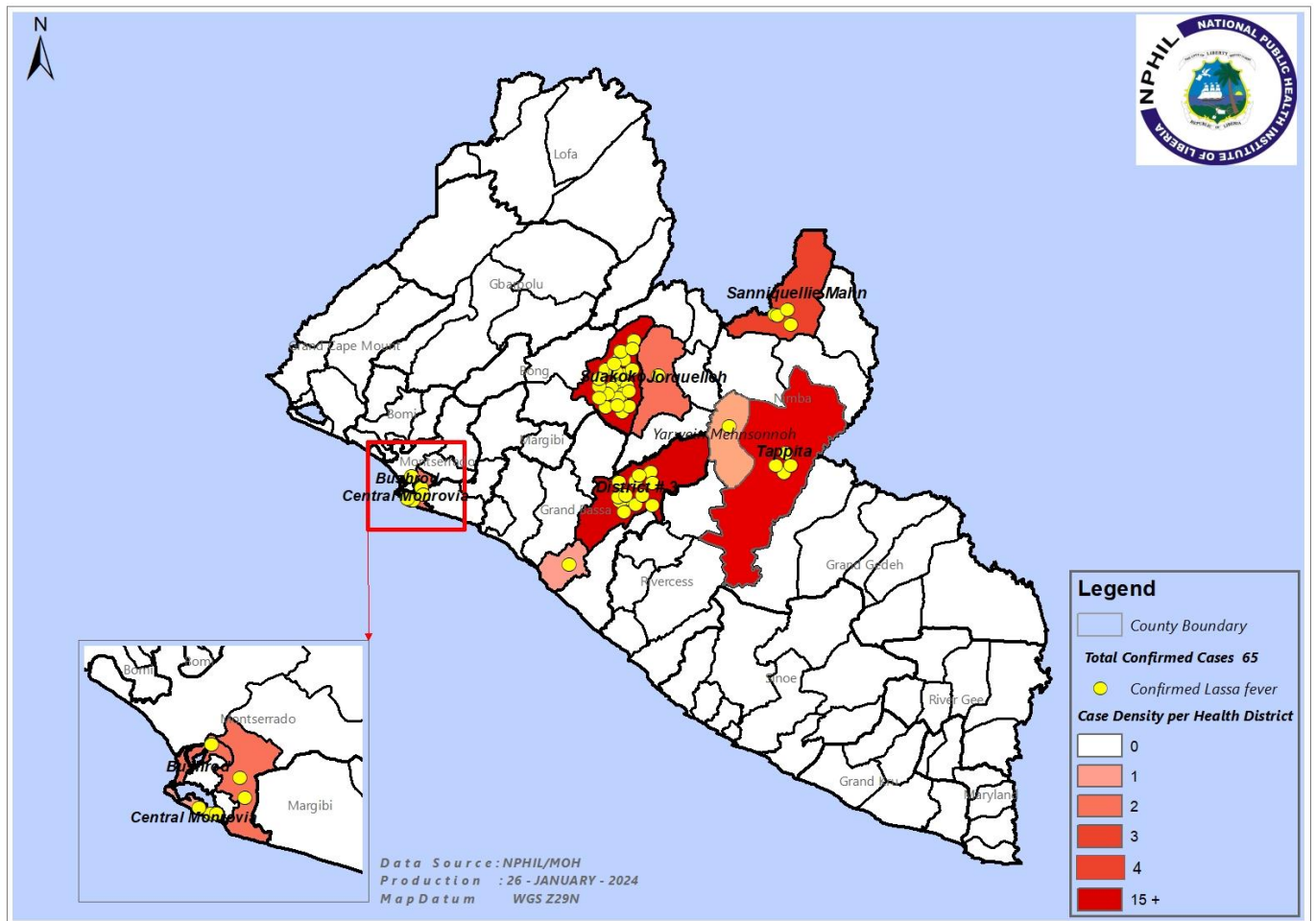
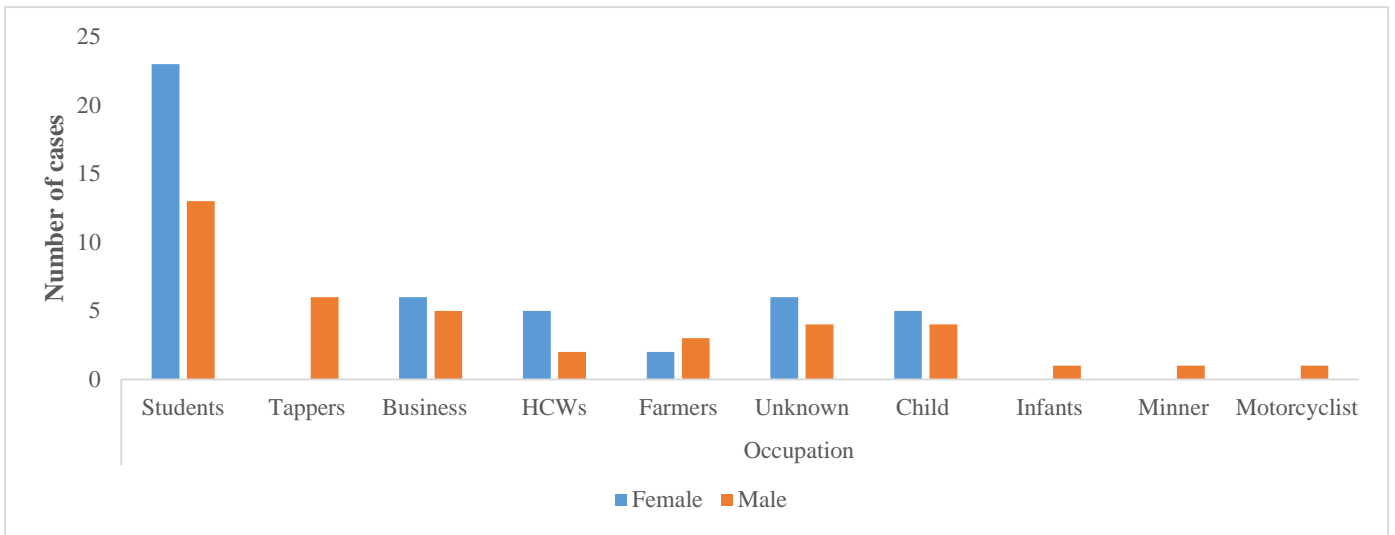


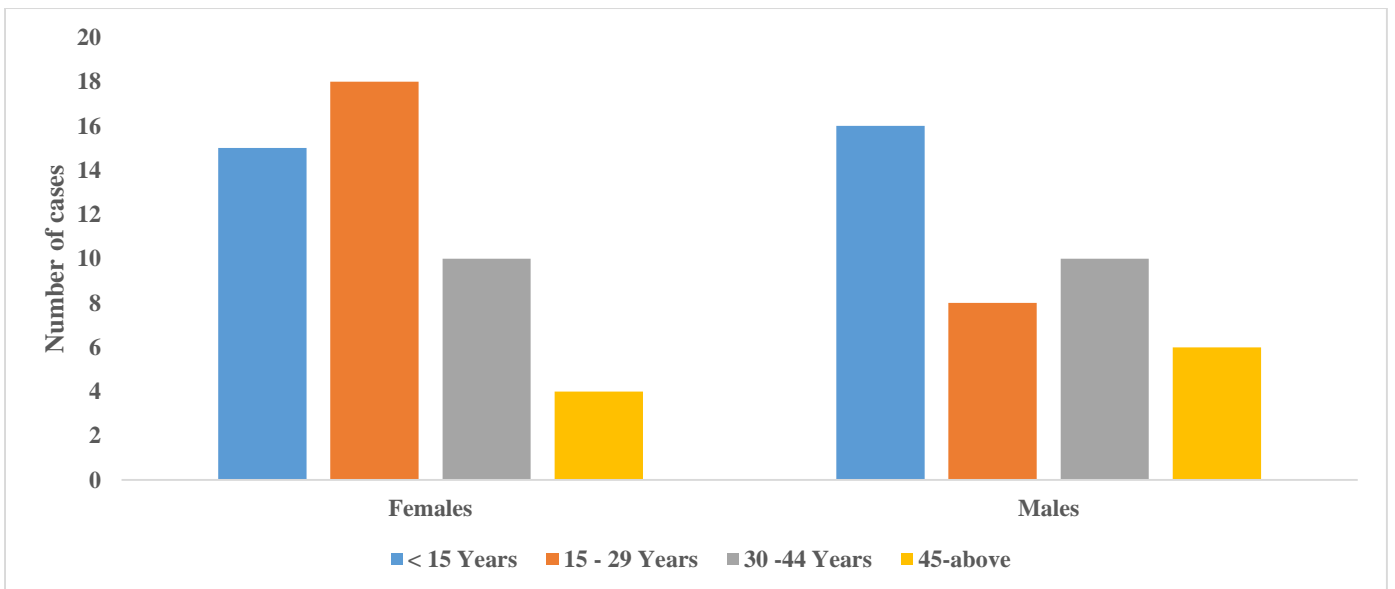
Figure 1: Geographical Distribution of Confirmed Lassa fever cases by Health District, Jan 1, 2022-Jan 26, 2024

Table 2: Summary of Lassa fever samples & cases, Liberia, Jan 6, 2022 – January 26, 2024

Variables	2022&2023	2024	Total
	Epi wk 1-52	Epi wk 1-3	
Total suspected cases reported to the national level	430	15	445
Total samples collected	411	15	426
Total samples collected and tested	402	10	413
Total samples not collected OR samples collected but not sent to NRL	14	0	14
Total samples pending testing	0	5	5
Total samples collected & rejected by the Laboratory	3	0	3
Total Laboratory confirmed	138	1	139
Total confirmed cases alive	88	1	89
Total deaths among confirmed cases	44	0	44
Overall case fatality rate (CFR)	32%	0%	32%
Total confirmed cases currently in isolation	0	1	1
Total suspected cases in isolation	0	1	1



**Figure 2: Distribution of confirmed Lassa fever cases by occupation and gender, Liberia, Jan. 6, 2022 – January 26, 2024**



**Figure 3: Distribution of confirmed Lassa fever cases by age and gender, Liberia, Jan. 6, 2022-January 26, 2024**

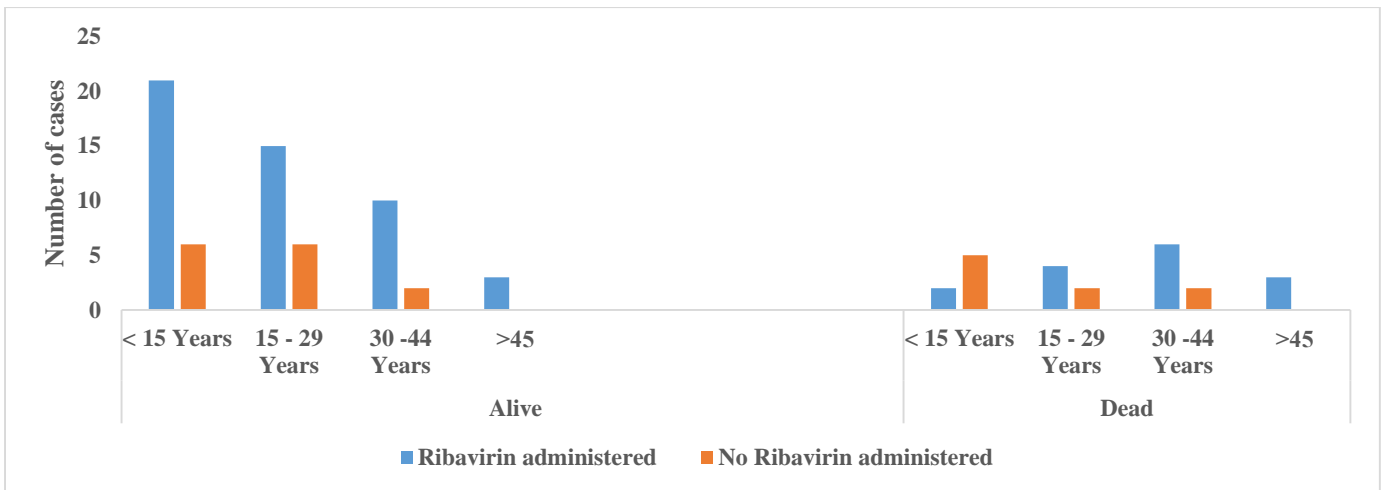


Figure 4: Confirmed Lassa fever cases by ribavirin administration and outcome, Liberia, Jan. 6, 2022 – January 26, 2024

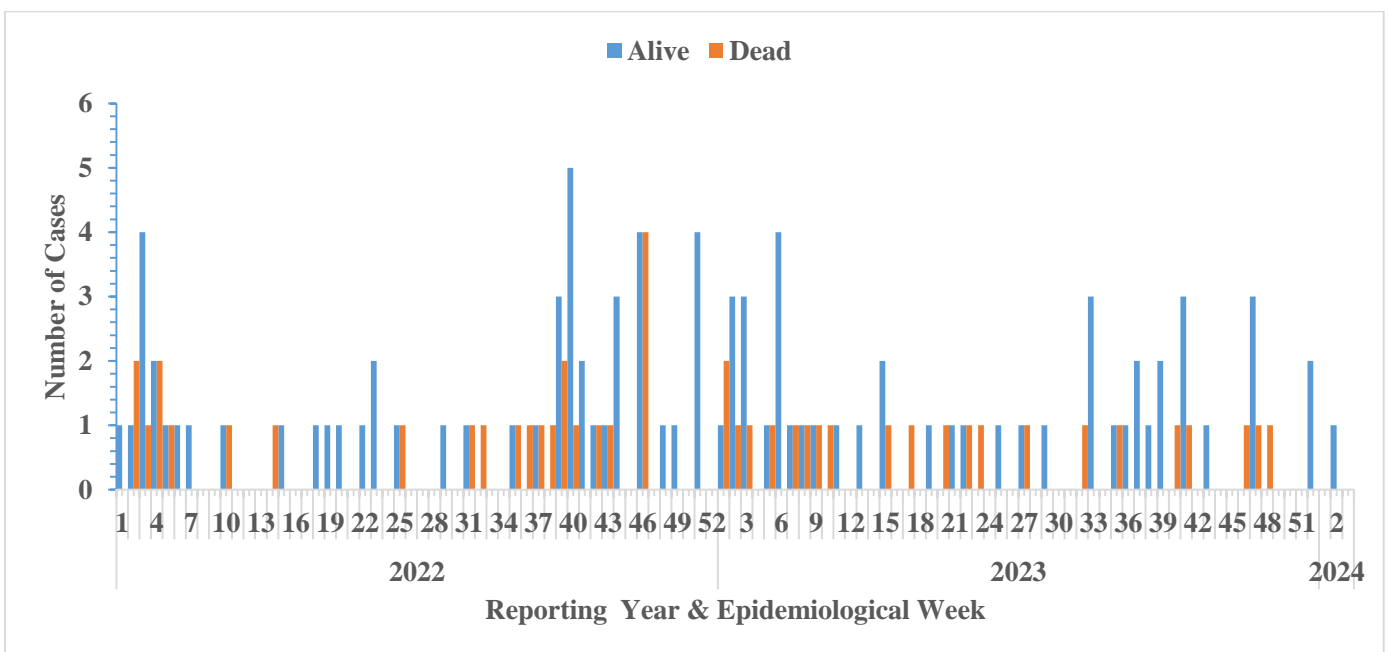


Figure 5: Epi-curve of confirmed Lassa fever cases and Deaths by Epi week, Liberia, January 6, 2022-January 26, 2024

## Public Health Interventions

Since the inception of the 2022 outbreak, several measures including response initiatives have been instituted including surveillance and laboratory testing, vector surveillance and control, case management, etc. These interventions aim to protect at-risk populations; prevent international spread; containing outbreaks rapidly. Below are details of the measures taken in the ongoing outbreak:

### I. Coordination

- National Public Health Institute of Liberia (NPHIL) and the Ministry of Health (MOH) are providing technical and logistical support to County Health Teams with support from partners.

### II. Epidemiological Surveillance

- Active case search and contact tracing ongoing in affected communities and districts
- Development and dissemination of weekly SitReps by affected counties

### III. Laboratory

- The National Public Health Reference Laboratory continues testing of Lassa fever samples
- Total of 110 Lassa fever cases have been confirmed since this outbreak

### IV. Case management and IPC

- Cases are being isolated and managed at designated facilities
- Ribavirin supply in country and being distributed for treatment of Lf cases to affected counties



*Deputy CSO providing technical and support to the ongoing Lassa fever outbreak, JDF Hospital, Tappita, Nimba county, 18 January 2024*

### V. Environmental and Vector Control

- Ongoing clean-up campaigns and rodent control measures in affected communities

### VI. Risk Communication and Community Engagement

- Risk communication and community engagement ongoing in affected and surrounding communities

### VII. Dead Body Management

- Safe and dignified burial conducted for a diseased suspected case in Tappita District



*Safe and dignified burial for suspected Lassa fever, JFD Hospital, Tappita, Nimba County, 24 January 2024*

### **VIII. Key Challenges**

- Late arrival of cases at health facilities
- Limited number of trained clinical staff for case management (Bong and Nimba)
- Limited supply of IPC materials in affected counties
- Inadequate IEC materials for community sensitization
- Limited logistics (communication cards, fuel, etc) to support contact tracing in affected counties

*For comments or questions, please contact:*

**Ralph W. Jetoh, MD, MPH**

**Director**

**Division of Infectious Disease and Epidemiology, NPHIL**

**Cell: (+231-777372655) Email: [ralphica2000@gmail.com](mailto:ralphica2000@gmail.com)**

**Emmanuel Dwalu, MPH**

**Epidemiologist/Lassa fever Disease Lead**

**Division of Infectious Disease and Epidemiology, NPHIL**

**Cell: (+231-770883760)**

**Email: [dwaluemmanuel2@gmail.com](mailto:dwaluemmanuel2@gmail.com)**

*Issuing Authority:*

**Hon. Jane A. MaCauley, MPH**

**Director General**

**National Public Health Institute of Liberia**

**Cell: +231 (0555)-152-926 Email: [janemacauley2@gmail.com](mailto:janemacauley2@gmail.com)**

