



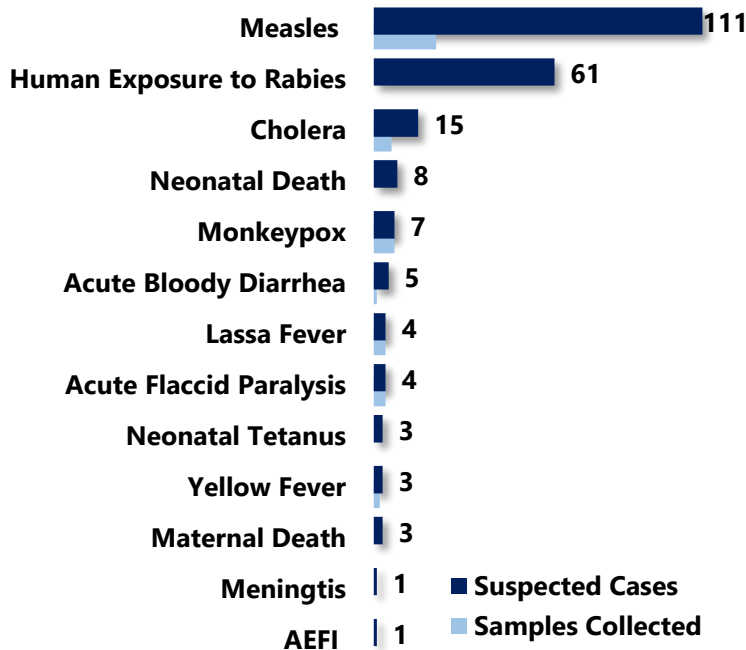
Liberia IDSR Epidemiology Bulletin

Epi-week 5 (January 30 – Feb 5, 2023)

Country Population: 5,104,413 | Volume 18 Issue 5 | Jan 30 – Feb 5, 2023 | Data Source: CSOs from 15 Counties and Laboratory

Highlights

Figure 1: Public Health Events Reported



Keynotes and Events of Public Health Significance

- ◆ A total of **226 events** of public health importance including **13 deaths** reported
- ◆ **Completeness and timeliness** of health facility reports were both **100%** and **99%**
- ◆ **Ongoing Lassa fever** outbreak in 3 Counties
- ◆ **Ongoing Measles** outbreak in 11 Counties
- ◆ **Ongoing Monkey pox** outbreak in Rivercess and Lofa Counties

Adverse Events Following Immunization/Adverse Drug Reaction

Reporting Coverage

Table 1: Health Facility Weekly IDSR Reporting Coverage, Liberia, Epi-week 5, 2023

County	Expected Reports From HF*	Reports Received	Received on Time	Completeness (%)	Timeliness (%)
Bomi	28	28	28	100	100
Bong	67	67	67	100	100
Gbarpolu	18	18	18	100	100
Grand Bassa	37	37	37	100	100
Grand Cape Mount	34	34	34	100	100
Grand Gedeh	24	24	24	100	100
Grand Kru	24	24	24	100	100
Lofa	60	60	60	100	100
Margibi	66	66	66	100	100
Maryland	28	28	28	100	100
Montserrado	418	418	409	100	99
Nimba	91	91	91	100	100
Rivercess	21	21	21	100	100
River Gee	20	20	20	100	100
Sinoe	41	41	41	100	100
Liberia	977	977	968	100	99

- 977(100%) Health facilities reported IDSR data
- 93 (100%) Health districts reported IDSR data
- 968(99%) Health facilities reported timely IDSR data

◆ The national target for weekly IDSR reporting is 80%. Health facility timeliness is monitored at the health district level

Legend: ≥80 <80



Liberia IDSR Epidemiology Bulletin

Epi-week 5 (January 30 – Feb 5, 2023)

Vaccine-Preventable Diseases

Measles

Table 2: Distribution of Measles cases per county and epi-classification, Liberia, Epi week 5, 2023

111 suspected cases		21 specimens collected		0 Specimen tested				
COUNTY	CURRENT WEEK		CUMULATIVE CONFIRMED CASES WEEK 1-5	CLASSIFICATION OF CONFIRMED CASES wk 1-5			CUMULATIVE DEATHS	CFR (%)
	SUSPECTED	CONFIRMED		Lab confirmed	Epi-Linked	Clinically Compatible		
Bomi	13	5	13	2	7	4	0	0.0
Bong	33	7	33	2	17	14	1	3.0
Gbarpolu	12	0	12	0	0	12	0	0.0
Grand Bassa	23	3	23	0	23	0	0	0.0
Grand Cape Mount	11	2	9	1	7	1	0	0.0
Grand Gedeh	27	6	20	0	0	20	0	0.0
Grand Kru	160	15	160	0	159	1	2	1.3
Lofa	12	2	12	0	3	9	0	0.0
Margibi	22	5	22	0	22	0	0	0.0
Maryland	125	21	125	0	124	1	0	0.0
Montserrado	116	24	115	1	114	0	0	0.0
Nimba	49	9	49	1	48	0	2	4.1
River Gee	13	6	13	0	7	6	0	0.0
Rivercess	7	2	7	0	7	0	0	0.0
Sinoe	17	4	14	2	1	11	0	0
Total	640	111	627	9	539	79	5	8.4

Table 3: Vaccination Status of Measles Cases, Liberia, Epi week 5, 2023

County	Vaccinated	Number of Doses Received		
		One Dose	Two Doses	Doses Not indicated
Bomi	4	0	4	0
Bong	3	0	0	3
Gbarpolu	0	0	0	0
Grand Cape Mount	2	1	1	0
Grand Gedeh	3	1	0	2
Grand Kru	8	0	0	8
Lofa	2	2	0	0
Margibi	3	3	0	0
Maryland	6	1	2	3
Montserrado	21	17	4	0
Nimba	5	4	1	0
River Gee	6	1	0	5
Rivercess	1	1	0	0
Sinoe	2	1	2	0
Grand Total	66	32	14	21



Liberia IDSR Epidemiology Bulletin

Epi-week 5 (January 30 – Feb 5, 2023)

Outbreak Section

Table 4: Cumulative Distribution of Measles Cases and Deaths, December 13, 2021 -February 5, 2023

COUNTY	CUMULATIVE SUSPECTED CASES	CUMULATIVE CONFIRMED CASES	CLASSIFICATION OF CONFIRMED CASES			CLASSIFICATION OF CONFIRMED DEATHS			CUMULATIVE DEATHS	CFR (%)	# CONFIRMED CASES WEEK 4	# CONFIRMED CASES WEEK 5	% CHANGE	Outbreak Status
			Lab confirmed	Epi Linked	Clinically Compatible	Lab confirmed	Epi Linked	Clinically Compatible						
Montserrado	4,484	4,423	139	4,130	154	3	61	3	67	1.6	18	24	33	Ongoing
Nimba	821	792	35	719	38	0	0	2	3	0.1	21	9	-57	Ongoing
Margibi	652	631	33	590	8	0	1	1	1	0	6	5	-25	Ongoing
Grand Bassa	809	772	40	630	102	1	6	0	7	1	9	3	-66	Ongoing
Lofa	255	195	32	124	39	0	0	0	0	0	2	2	-	Ongoing
Bong	419	397	17	335	45	0	1	2	3	0.6	5	4	-20	Ongoing
Maryland	514	502	22	461	19	0	0	0	0	0	38	18	-53	Ongoing
Grand Gedeh	256	143	30	80	33	0	0	0	0	0	0	0	-	Ended
Sinoe	193	155	30	58	64	0	0	0	0	0	0	0	-	Ended
Bomi	124	99	33	50	16	1	2	2	5	7.4	1	5	400	Ongoing
Grd Cape Mt	159	139	16	96	27	0	2	1	3	2.7	2	2	-	Ongoing
Grand Kru	425	399	16	377	6	0	2	0	2	0	42	15	-71	Ongoing
Gbarpolu	74	60	5	50	5	0	0	0	0	0	0	0	-	Ended
Rivercess	102	83	20	54	7	0	1	0	1	1.3	2	1	-50	Ongoing
River Gee	14	4	3	0	1	0	0	0	0	0	0	0	-	Ended
Total	9,301	8,794	476	7,754	564	5	76	11	92	1.5	146	88		

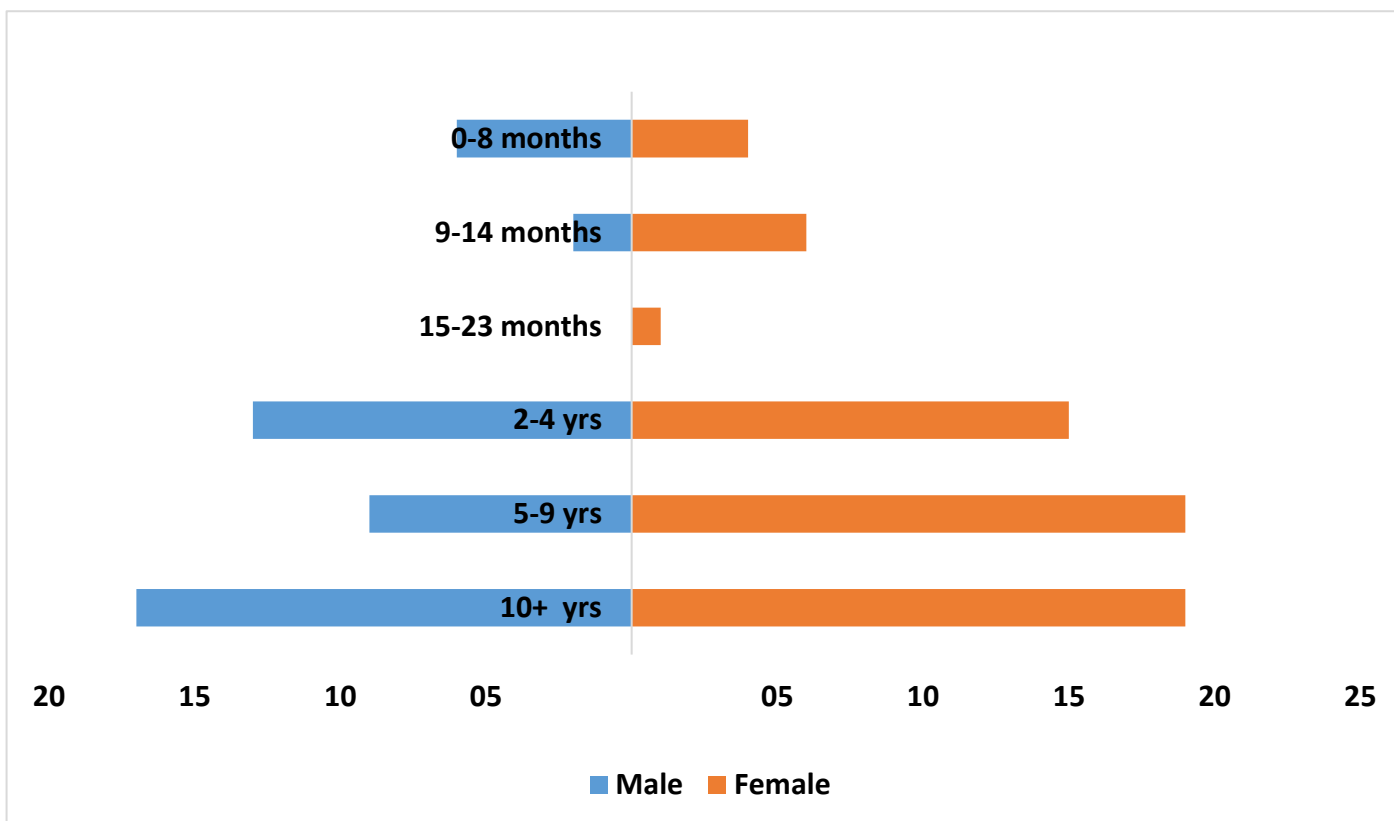


Figure 2: Distribution of Measles Cases by Age and Sex, epi-week 5, 2023



Liberia IDSR Epidemiology Bulletin

Epi-week 5 (January 30 – Feb 5, 2023)

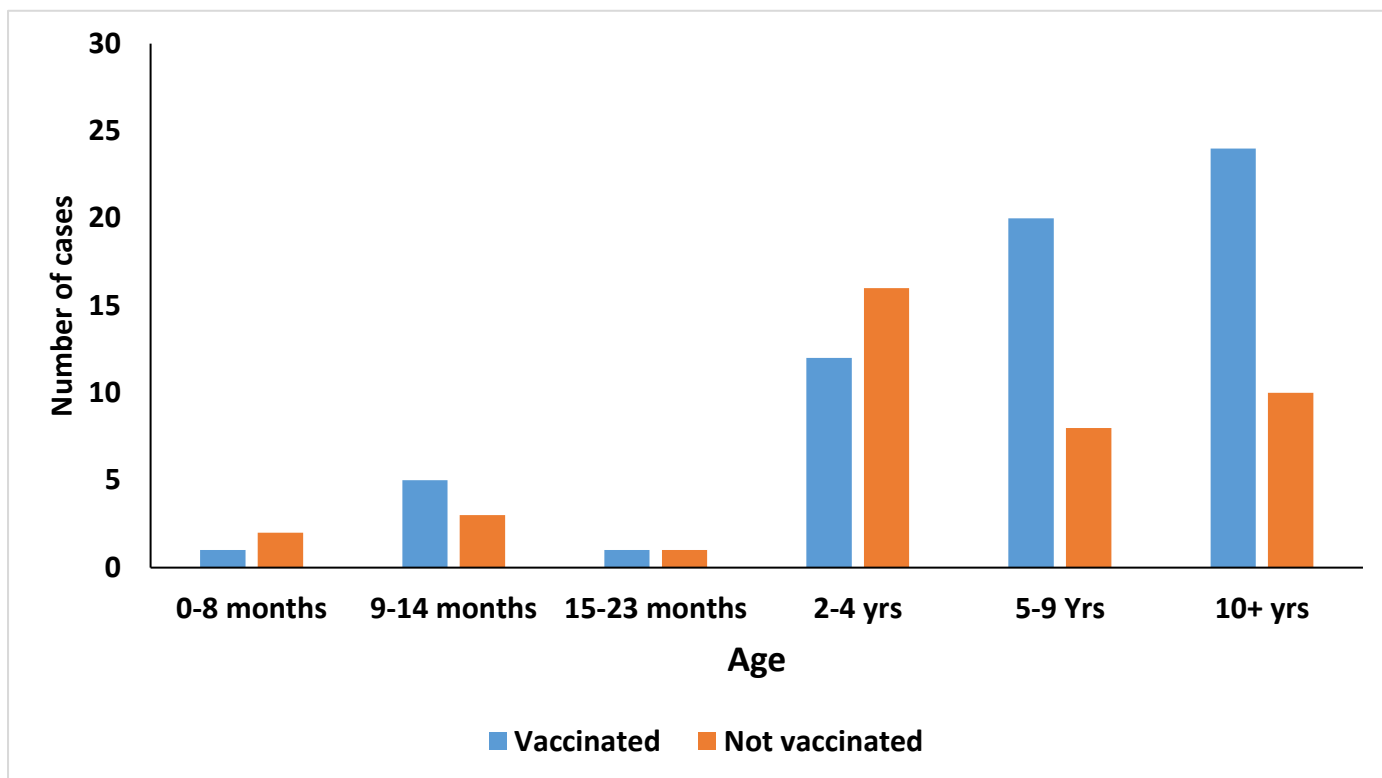


Figure 3: Vaccination Status of Measles Cases by Age group, epi-week 5, 2023

Public Health Response

I. Coordination

- Ongoing monitoring of measles cases at affected homes

II. Epidemiological Surveillance

- Active case search in affected communities

III. Case Management

- Encouraged measles cases mothers to Isolation patients

V. Laboratory

- Specimens were collected and transported to the NRL for testing

VI. Risk Communication and Community Engagement

- Health education on prevention conducted in affected Communities

Acute Flaccid Paralysis (AFP)

- ☞ Four (4) suspected cases were reported from Bomi (1), Gbarpolu (1), Lofa (1), and Rivercess (1) Counties
- ☞ Cumulatively, seven (7) cases reported

Neonatal Tetanus

- ☞ Three (3) cases were reported from Montserrado County
- ☞ Cumulatively, four (4) cases reported

Influenza-Like Illnesses

Coronavirus Disease (COVID-19)

Outbreak

- ☞ No new confirmed case reported
- ☞ Cumulatively, eight thousand sixty-two (8,062) confirmed cases, including 294 deaths
 - 601 healthcare workers
- ☞ A total of 17,827 contacts have been generated
 - 1,772 healthcare workers

Public Health Actions

- IMS coordination meeting ongoing.
- Surveillance activities including active case search and case investigation ongoing in the affected counties using WHO interim guidelines
- Case management ongoing for confirmed cases
- Compulsory testing among outgoing travelers as required by the country of destination ongoing

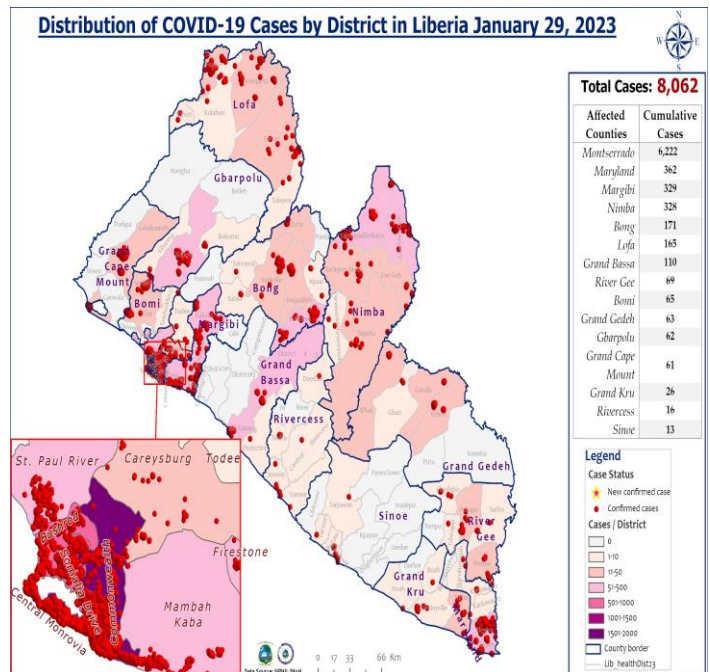


Figure 4: Geographical Distribution of Laboratory Confirmed COVID-19 Cases by Health Districts, Liberia, as of Jan 30-Feb 5, 2023

Influenza Like Illnesses

- ☞ Zero cases reported

Viral Hemorrhagic Diseases

Lassa fever

- ☞ Four (4) suspected cases were reported from Bong (2 including 1 death), Grand Kru (1), and Nimba (1) Counties
- ☞ Four (4) specimens were collected: 1 tested positive, 1 negative and 2 pending testing
- ☞ Cumulatively, (32) suspected cases reported
 - Proportion of suspected cases with a sample collected (31/32) 97%
 - Proportion of suspected cases with sample tested (25/32) 78%

Outbreak

Lassa fever disease

- ☞ Three new confirmed cases were reported
- ☞ Seventy-nine (79) contacts under 21 days' follow-up
- ☞ Cumulatively, eighty-seven (87) laboratory-confirmed cases including 26 deaths reported (CFR=30%)



Liberia IDSR Epidemiology Bulletin

Epi-week 5 (January 30 – Feb 5, 2023)

Table 5: Summary of Lassa fever Confirmed Cases Reported in Epi week 5, 2023

Age (Yrs)	Sex	Occupation	Community	District of outbreak	County	Date of Onset	Date of Adm.	Hospital	Date ribavirin initiated	Date specimen collected	Date sent to Lab.	Date Confirmed	Total contacts
25 yrs	Female	Student	Public work yard	Sanniquellie Mah	Nimba	20-Jan-23	30-Jan-23	Ganta hospital	30-Jan-23	31-Jan-23	31-Jan-23	6-Feb-23	16
11 yrs	Male	Student	Estate 4 camp	District 3A&B	G. Bassa	27-Jan-23	27-Jan-23	LAC	27-Jan-23	27-Jan-23	4-Feb-23	7-Feb-23	4
27 yrs	Male	Unknown	Lofa road	Suakoko	Bong	25-Jan-23	5-Feb-23	Phebe hospital	5-Feb-23	5-Feb-23	6-Feb-23	8-Feb-23	1

Table 6: Summary of Lassa fever Outbreak, Liberia, Jan 6, 2022-Feb 5, 2023

County	Outbreak Dates	District of Outbreak	Suspected cases	Confirmed cases	Confirmed cases in HCWs	Total Deaths	CFR %	Total Contacts	HCW contacts
Bong	Jan. 6, 2022, to date	Suakoko, Sanoyea, & Jorquelleh	89	33	8	6	18	291	179
Nimba	Jan. 18, 2022- April 15, 2022	Sanniquellie-Mah	14	7	0	4	57	104	48
	August 15, 2022- Jan. 24, 2023	Sanniquellie-Mah, Tappita & Saclenea	28	10	0	7	70	190	137
	Feb. 6, 2023	Sanniquellie-Mah	1	1	0	0	0	16	13
Grand Bassa	Nov. 5, 2021 - April 2, 2022	District #3 A&B	12	5	0	1	20	24	0
	May 5, 2022 - Aug. 14, 2022	District #3 A&B	13	6	0	1	17	24	0
	Sept. 9, 2022 to date	District #3 A&B	38	22	0	6	27	114	19
Montserrado	Oct. 17, 2022 - Nov. 27, 2023	Central Monrovia	18	1	0	0	0	28	23
River Gee	Nov. 25, 2022 - Jan. 6, 2023	Putopo	1	1	0	1	100	14	5
Total		3	214	86	8	26	30	805	424



Liberia IDSR Epidemiology Bulletin

Epi-week 5 (January 30 – Feb 5, 2023)

Public Health Measures

☞ NPHIL continues to provide technical support to the affected counties

I. Surveillance:

- Heightened surveillance in affected communities and districts
- Situational reports are produced and shared regularly at the National Level
- Daily follow-up/monitoring of contacts

II. RCCE

- Health Education in affected and surrounding communities
- Health workers and visitors are encouraged to enhance IPC practices by regular washing of hands

III. Case Management

- Isolation and treatment of confirmed cases

IV. IPC

- Affected communities were empowered with the WASH package to enable them to undertake short-term interventions that will improve the sanitation situation in each community thereby helping in Lassa fever prevention and control

Challenges

- Lack of Ribavirin in country

Yellow fever

- ☞ Three (3) suspected cases reported from Grand Gedeh (1), River Gee (1), and Grand Kru (1) Counties
- ☞ Cumulatively, four (4) suspected case reported
 - Proportion of suspected cases with samples collected (3/4) 75%

Ebola Virus Disease

- ☞ Zero suspected cases reported

Diarrheal Diseases

Acute Bloody Diarrhea (Suspected Shigellosis)

- ☞ Five (5) cases were reported from Nimba (2), Sinoe (1), Grand Kru (1), and Gbarpolu (1) Counties
- ☞ One specimen was collected and pending testing
- ☞ Cumulatively, thirty-six (36) cases reported

Severe Acute Watery Diarrhea (Suspected Cholera)

- ☞ Fifteen (15) cases were reported from Grand Kru (4), Sinoe (3), Nimba (2), Grand Bassa (2), Bomi (2), River Gee (1), and Maryland Counties
- ☞ Six (6) specimens were collected and pending testing
- ☞ Cumulatively, thirty-three (33) suspected cases reported

Other Reportable Diseases

Animal bite (Human Exposure to Rabies)

- ☞ Sixty-one (61) animal bite cases were reported:



Liberia IDSR Epidemiology Bulletin

Epi-week 5 (January 30 – Feb 5, 2023)

Table 7: Distribution of Animal bite cases and PEP administration per county, Liberia, Epi week 5, 2023

Counties	Cases	Person receiving PEP	PEP doses administered	Cumulative cases (Wk 1-5)	Cumulative PEP administered (Wk 1-5)
Bomi	1	0	0	4	0
Bong	2	1	1	15	5
Gbarpolu	2	0	0	2	0
Grand Bassa	3	0	0	14	0
Grand Cape Mount	5	0	0	9	1
Grand Gedeh	3	0	0	8	0
Grand Kru	11	9	9	26	11
Lofa	8	0	0	21	3
Margibi	5	5	5	21	10
Maryland	3	0	0	10	5
Montserrado	8	0	0	54	27
Nimba	4	0	0	25	4
Rivercess	3	0	0	13	0
River Gee	1	0	0	2	0
Sinoe	2	0	0	6	0
Total	61	15 (25%)	15	230	66 (29%)
Legend	1-2 doses		3-4 doses		5 doses

Public Health Actions

- ☞ Ongoing monitoring and follow-up of cases

Meningitis

- ☞ One (1) suspected case reported from Gbarpolu County
- ☞ Cumulatively, five (5) suspected cases reported
 - Proportion of suspected cases with samples collected (4/5) 80%
 - Proportion of sample tested (3/4) 75%

Monkeypox

- ☞ Seven (7) suspected cases were reported from Lofa (4), River Gee (1), Nimba (1), and Maryland (1) Counties
- ☞ Seven (7) specimens were collected: 5 tested negative and 2 pending testing
- ☞ Cumulatively, twenty-one (21) suspected cases reported

Outbreak

Monkeypox:

- ☞ No new confirmed case reported
- ☞ Ten (10) contacts currently under follow up
- ☞ All twenty (21) contacts completed follow-up
- ☞ Total of 4 confirmed cases reported
- ☞ Two (2) counties currently in outbreak



Liberia IDSR Epidemiology Bulletin

Epi-week 5 (January 30 – Feb 5, 2023)

Table 8: Summary of Monkeypox Outbreak, Liberia, December 5, 2022 – January 29, 2023

County	Outbreak Start Date	Outbreak Districts	Total suspected cases	Total confirmed cases	Total Deaths	CFR %	Total Contacts	# HCW contacts	Contacts under follow up	Contacts completed
Rivercess	Dec 5 to date	Central "C"	3	2	0	0.0	8	2	2	6
Lofa	Dec 22 to date	Salayea	3	1	0	0.0	15	0	0	15
	Dec 22 to date	Voinjama	2	1	0	0.0				

Public Health Measures

I. Coordination

- National Public Health Institute of Liberia (NPHIL) and the Ministry of Health (MOH) along with partners are providing technical and financial support to affected counties

II. Epidemiological Surveillance

- Active case search, case investigation, and contact tracing ongoing in the affected and neighboring communities and districts
- Development and dissemination of Sitrep by affected county and national

III. Case management and IPC

- Symptomatic treatment of the suspected case initiated
- IPC measures instituted in affected communities and schools

IV. Risk Communication and Community Engagement

- Community engagement and awareness with local leaders and community health development committees in the affected community and surrounding towns ongoing

Key Challenges

- No specimen collection kits for monkeypox in Rivercess county
- No support from county-based partners for response activities
- Limited IPC materials for response activities
- Limited copies of monkeypox standard case definitions

Events of Public Health Importance

Maternal Mortality

- ☞ Three (3) deaths were reported from Grand Kru (1), Maryland (1), and Nimba Counties
- ☞ Reported causes: Post-partum hemorrhage (3)
- ☞ Reported sites:
 - Health facility: 2 (67%)
 - Community: 1(33%)
- ☞ Cumulatively, twenty-six (26), deaths reported



Liberia IDSR Epidemiology Bulletin

Epi-week 5 (January 30 – Feb 5, 2023)

- Proportion of death review (5/26) 19%
- Proportion of community death (6/26) 23%

Neonatal Mortality

- ☞ Nine (9) deaths were reported: Margibi (3), Nimba (3), Rivercess (2) and Maryland (1) Counties
- ☞ Reported causes: birth asphyxia (5), Sepsis (3) and preterm (1)
- ☞ Reporting sites:
 - Health facility: (9) 100%
- ☞ Cumulatively, forty-nine (49) deaths reported

Adverse Events Following Immunization (AEFI)/Adverse Drug Reaction (ADR)

- ☞ Five (5) cases were reported from Bong (4), and Nimba (1) Counties
- ☞ Related vaccine:
 - COVID-19 (4/5) 80%
 - Measles (1/5) 20%
- ☞ Cumulatively, thirteen (13) events were reported and COVID-19 accounted for (8/13) 62%

Border Surveillance Update

- ☞ A total of 5,021 travelers were recorded for the week with incoming travelers accounting for 50% (2,517/5,021)

Table 9: Border activity at the PoE for Incoming and Outgoing Travelers, Liberia, Epi week 5, 2023

Type of Ports	Point of Entry	Weekly total	Arrival	Departure	Total travelers with YB	Yellow Book Damage	Card Replaced	Travelers Vaccinated against YF & Issued book	Alerts detected/ Verified	COVID-19 Reactive	Evidence of COVID-19 vaccination card/certificate
Airport	James S. Paynes	65	15	50	0	0	0	0	0	0	0
	Robert Int'l Airport	3664	1777	1887	3633	42	0	2	0	0	3637
Seaport	Freeport of Monrovia	174	87	87	174	0	0	0	0	0	174
	Buchanan Port	124	62	62	124	0	0	0	0	0	124
Land Crossing	Bo Water Side	628	365	263	577	0	13	38	0	0	516
	Ganta	289	177	112	211	5	5	0	0	0	248
	Yekepa	0	0	0	0	0	0	0	0	0	0
	Loguatu	77	34	43	48	0	0	0	0	0	34
Total		5,021	2,517	2,504	4,767	47	18	40	0	0	4,733

Note: Yellow book issue for both arrival and departure; Vaccination coverage for both arrival and departure



Liberia IDSR Epidemiology Bulletin

Epi-week 5 (January 30 – Feb 5, 2023)

Public Health Measures

National level

- Trained 25 PoE staff on vector control and Disease Surveillance in Bong, Grand Cape Mount, Margibi, Montserrado, and Nimba Counties

County-level

Surveillance

- Publication of situational reports
- Active case search ongoing in affected and surrounding communities

Case Management

- Administration of PEP and ribavirin
- Management of measles cases ongoing

Appendix

Summary of Immediately Reportable Diseases, Conditions, and Events by County

		Bomi	Bong	Gbarpolu	Grand Bassa	Grand Cape Mount	Grand Gedeh	Grand Kru	Lofa	Margibi	Maryland	Montserrado	Nimba	Rivercess	River Gee	Sinoe	Total Weekly	Cumulative Reported	Cumulative Lab-confirmed		
No. of Expected Health District		4	9	5	8	5	6	5	6	4	6	7	6	6	6	10	93				
No. of Health District Reported		4	9	5	8	5	6	5	6	4	6	7	6	6	6	10	93				
Vaccine Preventable Disease	Acute Flaccid Paralysis (Suspected Polio)	A	1	0	1	0	0	0	0	1	0	0	0	0	1	0	0	4	7	0	
		D	0	0	0	0	0	0	0	0	0	0	0	0	0	0	0	0	0	0	0
	Measles	A	5	7	0	3	2	6	15	2	5	21	24	9	2	6	4	111	640	0	
		D	0	0	0	0	0	0	0	0	0	0	0	0	0	0	0	0	0	0	0
	Neonatal Tetanus	A	0	0	0	0	0	0	0	0	0	0	2	1	0	0	0	3	4	0	
		D	0	0	0	0	0	0	0	0	0	0	0	0	0	0	0	0	0	0	0
	Yellow fever	A	0	0	0	0	0	1	1	0	0	0	0	0	0	1	0	3	4	0	
		D	0	0	0	0	0	0	0	0	0	0	0	0	0	0	0	0	0	0	0
	Viral Hemorrhagic Disease	Dengue fever	A	0	0	0	0	0	0	0	0	0	0	0	0	0	0	0	0	0	0
			D	0	0	0	0	0	0	0	0	0	0	0	0	0	0	0	0	0	0
Ebola Virus Disease		A	0	0	0	0	0	0	0	0	0	0	0	0	0	0	0	0	0	0	
		D	0	0	0	0	0	0	0	0	0	0	0	0	0	0	0	0	0	0	0
Lassa fever	A	0	1	0	0	0	0	1	0	0	0	1	1	0	0	0	4	32	6		
	D	0	1	0	0	0	0	0	0	0	0	0	0	0	0	0	1	2	1		
Influenza-Like Illness	COVID-19	A	0	0	0	0	0	0	0	0	0	0	0	0	0	0	0	0	0	0	
		D	0	0	0	0	0	0	0	0	0	0	0	0	0	0	0	0	0	0	0
	Influenza Like Illnesses	A	0	0	0	0	0	0	0	0	0	0	0	0	0	0	0	0	7	0	
		D	0	0	0	0	0	0	0	0	0	0	0	0	0	0	0	0	0	0	0
Diarrheal Disease	Acute Bloody Diarrhoea (Shigellosis)	A	0	0	1	0	0	1	0	0	0	0	2	0	0	1	5	36	0		
		D	0	0	0	0	0	0	0	0	0	0	0	0	0	0	0	0	0	0	
	Severe Acute Watery Diarrhoea (Cholera)	A	2	0	0	2	0	0	4	0	0	1	0	2	0	1	3	15	35	0	
		D	0	0	0	0	0	0	0	0	0	0	0	0	0	0	0	0	0	0	
Events of Public Health Interest	Maternal Mortality	D	0	0	0	0	0	1	0	0	1	0	1	0	0	0	3	26			
	Neonatal Mortality	D	0	0	0	0	0	0	0	3	0	0	3	2	0	0	8	48			
	0	A	0	0	0	0	0	0	0	0	0	0	1	0	0	0	1	9	0		
		D	0	0	0	0	0	0	0	0	0	0	0	0	0	0	0	0	0	0	
	Unexplained Cluster of Health Events/Disease	A	0	0	0	0	0	0	0	0	0	0	0	0	0	0	0	0	0	0	
		D	0	0	0	0	0	0	0	0	0	0	0	0	0	0	0	0	0	0	
Other Reportable Diseases	Monkeypox	A	0	0	0	0	0	0	0	0	4	0	1	0	1	0	6	14	0		
		D	0	0	0	0	0	0	0	0	0	0	0	0	0	0	0	0	0	0	
	Tuberculosis	A	0	0	0	0	0	0	0	0	0	0	0	0	0	0	0	0	0	0	
		D	0	0	0	0	0	0	0	0	0	0	0	0	0	0	0	0	0	0	
	Human Exposure to Rabies (Suspected Human)	A	1	2	2	3	5	3	11	8	5	3	8	4	3	1	2	61	231	0	
		D	0	0	0	0	0	0	0	0	0	0	0	0	0	0	0	0	0	0	
	Meningitis	A	0	0	1	0	0	0	0	0	0	0	0	0	0	0	0	1	4	0	
		D	0	0	0	0	0	0	0	0	0	0	0	0	0	0	0	0	0	0	
Unexplained Cluster of deaths	A	0	0	0	0	0	0	0	0	0	0	0	0	0	0	0	0	0	0		
	D	0	0	0	0	0	0	0	0	0	0	0	0	0	0	0	0	0	0		
Neglected Tropical Diseases	Buruli Ulcer	A	0	0	0	0	0	0	0	0	0	0	0	0	0	0	0	0	0	0	
		D	0	0	0	0	0	0	0	0	0	0	0	0	0	0	0	0	0	0	
	Yaws	A	0	0	0	0	0	0	0	0	0	0	0	0	0	0	0	0	0	0	
		D	0	0	0	0	0	0	0	0	0	0	0	0	0	0	0	0	0	0	
TOTAL		9	11	5	8	0	10	0	11	0	30	0	25	0	10	10	226	1099	7		

D = Dead **A** = Alive

Notes

- ☞ **Completeness** refers to the proportion of expected weekly IDSR reports received (target: $\geq 80\%$)
- ☞ **Timeliness** refers to the proportion of expected weekly IDSR reports received by the next level on time (target: $\geq 80\%$). The time requirement for weekly IDSR reports:
 - Health facility - required on or before 5:00 pm every Saturday to the district level
 - Health district - required on or before 5:00 pm every Sunday to the county level
 - County - required on or before 5:00 pm every Monday to the national level
- ☞ **Non-polio AFP rate** is the proportion of non-polio AFP cases per 100,000 among the estimated population under 15 years of age in 2017 (annual target: $\geq 2/100,000$)
- ☞ **Non-measles febrile rash illness rate** refers to the proportion of Negative measles cases per 100,000 population
- ☞ **Annualized maternal mortality rate** refers to the maternal mortality rate of a given period less than one year and it is the number of maternal deaths per 100,000 live births
- ☞ **Annualized neonatal mortality rate** refers to the neonatal mortality ratio of a given period less than one year and it is the number of neonatal deaths per 1,000 live births
- ☞ **Epi-linked** refers to any suspected case that has not had a specimen taken for serologic confirmation but is linked to a laboratory confirmed case
- ☞ **Confirmed case** refers to a case whose specimen has been tested positive or reactive upon laboratory testing, or has been classified as confirmed by either epidemiologic linkage with a confirmed case, or clinical compatibility with the disease or condition

Epidemiological bulletin published with support from WHO and CDC

For comments or questions, please contact

Ralph W. Jetoh, MD, MPH

Director

Infectious Disease and Epidemiology Division

National Public Health Institute of Liberia

Republic of Liberia

Email: ralphica2000@gmail.com

Phone: +231 886526388/777372655

Website: www.nphil.gov.lr

National Public Health Institute of Liberia (NPHIL)

MISSION

To prevent and control public health threats by promoting healthy outcomes and serving as a source of knowledge

VISION

A center of excellence to create health outcomes for Liberians through a strong preventive health system and expertise

EDITORIAL TEAM

DIDE / NPHIL

A. N. Mianah
I. P. Pewu
T. O. Yeabah
J. S. Kokro
E. Dwalu
A.B. Corvah
G. B. Williams
S. K. Zayzay
L. W. Colee
M. Tegli
T. L. Hall
S. L. Flomo
M. S. Quiah
C. T. Yeah
L. K. Seepoe
J. O. Abel
P. J. Thomas
H. M. Sherman
M.D. Vaye
N. K. Dovillie
A. Coker
S. Nuwolo

Ministry of Health
WHO Liberia Office

Data sources

Data and information is provided by the fifteen County Surveillance Officers and National Public Health Reference Laboratory via regular weekly reports, telephone calls and email exchanges. Situations are evolving and dynamic therefore numbers stated are subject to change.